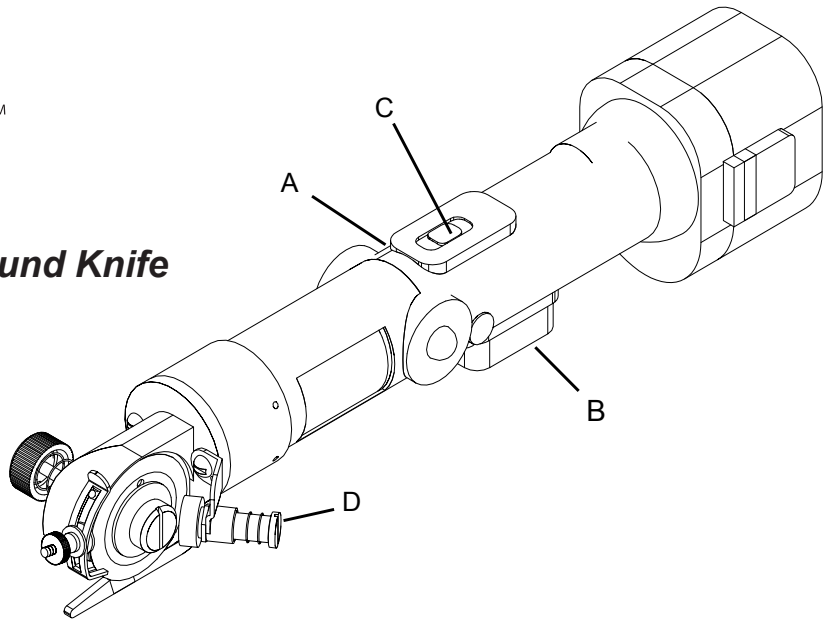


Eastman®

# THE EASTMAN® WORKERBEE™

**Model WB:  
7.2 Volt Heavy Duty Cordless Round Knife**

## **Instruction Manual & Illustrated Parts List**



**⚠ CAUTION**

Machine Equipped  
with Sharp Blade

Your new Worker Bee is designed to replace hand held shears for increased performance and capacity with a minimum of maintenance and service. Equipped with either a round blade for general use or 4 sided and 8 sided blades for sheer or difficult to cut cloth.

### **TO OPERATE MACHINE**

Raise the knife guard up just enough to allow the fabric in over the pressure foot and make contact with the blade. Set the knife direction to rotate in a counterclockwise rotation by pressing the down arrow switch (A). To turn on the Worker Bee, squeeze the trigger switch (B) and hold button to activated ON/OFF switch. If cutter does not perform properly check battery pack. Be sure the battery pack is properly charged and installed. Be sure the blade direction switch is fully depresses from the center safety position.

To adjust handle cutting angle, pull back on release button (C) to set the handle position.

### **TO SHARPEN KNIFE**

Take the machine out of material to be cut. Check blade rotation for counter-clock wise rotation. To obtain a fine, keen edge on the blade, while machine is running, press lightly on sharpener button (D) with a constant pressure. Hold for 10 seconds, then release.

**⚠ WARNING**

Before performing any of the following procedures, make sure the battery power pack has been removed.

**⚠ WARNING**

Safety glasses must be worn at all times when operating or servicing this equipment.

### **LUBRICATION**

Follow this procedure yearly for intermittent use, or every month for continuous use. Remove knife. Remove tension nut (4C3-12) and spring. Place a few drops of Eastman oil on knife rod (720C1-42). Remove sharpening stone (541C1-22) and wipe away any grit deposits. Apply a light coat of Eastman Lubriko Grease (242C2) to parts and reassemble. To lubricate gears, remove plug (54C4-35) and inject grease. Eastman Gear lubricant (242C2) is recommended. Be sure felt lubricator (191C1-26) is kept clean and moist with oil when changing blade.

### **KNIFE REPLACEMENT**

Set the knife direction switch to the middle safety position. Remove battery pack from Worker Bee. Lay Worker Bee on its side with knife facing up. Insert a pin or allen wrench into knife hole. With large screwdriver turn lock nut (4C1-194) counterclockwise. Remove lock nut. CAREFULLY lift out WORN SHARP KNIFE and DISCARD WITH CARE. Lubricate wick with a few drops of Eastman oil. Install new Eastman knife with bevel facing outward. Reverse procedure to secure new knife.

**Eastman®**

Over a Century of Cutting Expertise

779 Washington St., Buffalo, N.Y. 14203-1396 U.S.A. • (716)856-2200 • Fax (716)856-1140 or (716)856-2068

Manufacturers of Eastman Cloth Cutting and Cloth Spreading Machines

[www.EastmanCuts.com](http://www.EastmanCuts.com)

## EMERY WHEEL REPLACEMENT

Remove battery pack from Worker Bee. With Worker Bee on its side (knife facing up) and Safety switch (A) in middle position remove knife lock nut and knife. Hold sharpener bushing (21C5-4) with suitable wrench. Remove sharpener button (63C3-21) and spring. Sharpening stone and bushing assembly can then be removed from sharpener bracket (636C1-3). Remove retaining ring from shaft of sharpening stone and remove stone. To Install, assemble in reverse order.

## INSTALLING AND REMOVING THE BATTERY PACK

**NOTE:** Make sure your battery pack is fully charged.

**To install battery pack** into the handle, align the battery base with the handle and slide the battery pack firmly into handle until you hear the lock snap into place.

**To remove the battery pack** from the handle, press the release buttons and firmly pull the battery pack out of the handle. Insert battery pack into charger.

## CHARGING PROCEDURE

### 1 Hour Charger

1. Plug the charger into the appropriate outlet.
2. Insert the battery pack into the charger making sure the pack is fully seated. The red (charging) light will blink continuously indicating that the charging process has started.
3. The battery pack will be fully charged in about 1 hour. The completion of the charge will be indicated by the red light remaining ON continuously. The pack is fully charged and may be used at this time or left in the charger.

### Trouble Indicator

This charger is designed to detect certain problems that can arise with battery packs. The red indicator light will flash at a fast rate. If this occurs, reinsert battery pack. If the problem persists, try a different battery pack to determine if the charger is OK. If the new pack charges correctly, then the original pack is defective and should be recycled.

### Leaving the battery pack into the charger

When the red light remains on, the charger has switched to its "equalize charge" mode which last about 4 hours, after which the charger will switch to "maintenance mode". The battery pack can be removed at any time during these cycles but will only be fully charged if the red light is continuously on. The battery pack and the charger can be left connected with the red light glowing indefinitely. This will keep the battery pack fresh and fully charged.

## Important Charging Notes:

- Longest life and best performance can be obtained if the battery pack is charged when the air temperature is between 65°F and 75°F. Do not charge the battery pack in an air temperature below +40°F or above +105°F. This is important and will prevent serious damage to the battery pack.
- While charging, the charger and battery pack may become warm. This is a normal condition and does not indicate a problem.
- If a battery does not charge properly – 1.) Check current at receptacle by plugging in a lamp –or– other appliance; 2.) Check to see if receptacle is connected to a light switch that turns power off when you turn out the lights; 3.) Move charger and battery pack to a surrounding air temperature between +40°F to +105°F; 4.) If the receptacle and temperature are satisfactory, and you do not get proper charging, take –or– send the batteries and charger to your local Eastman representative for service.
- The battery pack should be recharged when they fail to produce sufficient power on jobs that were easily performed previously. **DO NOT CONTINUE** to use the machine with its batteries in a depleted condition.

## OPTIONAL BALL TIP AND SHEAR PLATE FOOT

A ball tip (109C5-1) for cutting loosely woven materials and shear plate foot (68C3-4) for additional support and cutting accuracy are optional. To attach shear plate foot to shear plate (726C1-34), use allen key (95C5-7) as illustrated.

---

## TOOL CARE

- Do not force tool. Use the correct tool for your application.
- Disconnect battery pack from tool or place switch in locked position before making any adjustments, changing accessories, or storing the tool. Such preventative safety measures reduce the risk of starting the tool accidentally.
- Maintain tools with care. Keep the blade sharp and clean. Properly maintained tools with sharp cutting edges are less likely to bind and are easier to control.
- Use only Eastman accessories with your Worker Bee. Accessories that may be suitable for one tool may create a risk of injury when used with another.

## SERVICE

- Tool service must be performed only by qualified repair personnel.
- When servicing a tool, use only Genuine Eastman replacement parts.

## The RBRC Seal

The RBRC (Rechargeable Battery Recycling Corporation) Seal on the NiCd battery (or battery pack) indicates that costs to recycle the battery (or battery pack) at the end of its useful life have already been paid. In some areas, it is illegal to place spent NiCd batteries in the trash –or- municipal solid waste streams. The RBRC program provides an environmentally conscious alternative.

RBRC in cooperation with other battery users, has established programs in the United States and Canada to facilitate the collection of spent NiCd batteries. Help protect our environment and conserve natural resources by returning the spent NiCd battery to your local recycling center. You may also contact your local recycling center for information on where to drop off the spent battery, or call 1-800-8-Battery.

---

**Eastman®**

*Over a Century of Cutting Expertise*

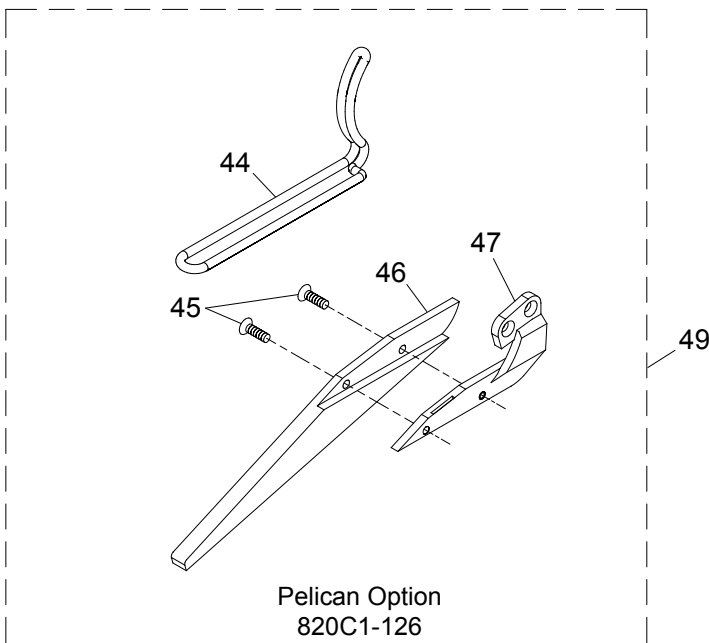
# Worker Bee

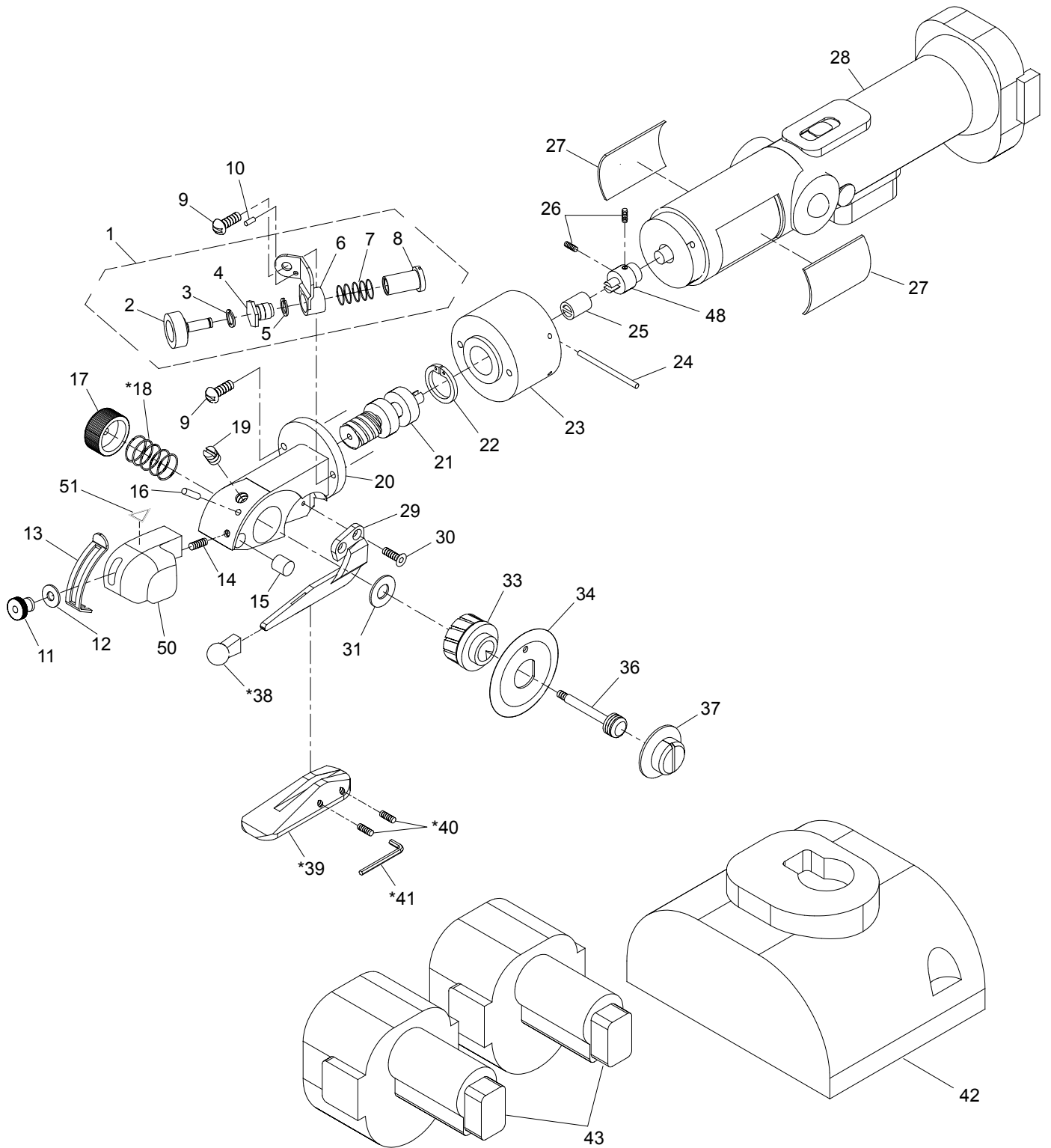
## Illustrated Parts List

ITEM	PART NO.	DESCRIPTION	QTY.
1	637C1-12	Sharpener Assembly	1
2	541C1-22	Sharpening Stone	1
3	12C15-57	Spring Washer	1
4	21C5-4	Sharpener Bushing	1
5	18C6-23	Retaining Ring	1
6	636C1-3	Sharpener Bracket	1
7	34C10-131	Sharpener Spring	1
8	63C3-21	Sharpener Button	1
9	300C12-6	Screw, Round Hd. #8-32 x 1/2	2
10	17C15-120	Spring Pin	1
11	20C5-21	Lock Nut	1
12	12C15-95	Washer, Flat	1
13	25C4-150	Knife Guard	1
14	20C13-56	Set Screw, #6-32 x 3/4	1
15	191C1-26	Felt Lubricator	1
16	17C15-127	Spring Pin	1
17	4C3-12	Tension Nut	1
18	34C10-163	Tension Spring	1
*	34C1-63	Tension Spring, Heavy Duty	1
19	54C4-35	Grease Plug, Knife Housing Assy.	1
20	647C1-1	Knife Housing Assembly	1
21	653C1-1	Worm Gear Assembly	1
22	18C6-35	Snap Retaining Ring	1
23	29C6-183	Adaptor, Knife Housing	1
24	17C15-165	Spring Pin, Long	2

ITEM	PART NO.	DESCRIPTION	QTY.
25	822C1-1	Coupling, Steel	1
*	151C1-3	Coupling, Composite	1
26	309C8-3	Setscrew	2
27	236C1-168	WB Decal Sheet	1
28	804C1-3	WB Motor Housing Ass'y	1
29	726C1-34	Shear Plate	1
30	20C12-117	Flat Head Screw	2
31	12C15-74	Thrust Washer	1
32	-	-	-
33	524C1-21	Knife Gear	1
34	80C1-127	Knife, Round	1
*	80C1-123	Knife, 4-Sided (Semi-Square)	1
*	80C1-133	Knife, 8-Sided (Octagon)	1
35	-	-	-
36	720C1-42	Knife Rod with Bearings	1
37	4C1-194	Knife Lock Nut	1
*38	109C5-1	Ball Point	1
*39	68C3-4	Shear Foot	1
*40	309C8-1	SetScrew, #4-40 x 1/4	2
*41	95C5-7	Allen Key	1
42	288C1-6	WB Battery Charger, 110v	1
*	288C1-7	WB Battery Charger, 220v	1
43	287C1-4	Battery, 7.2 Volt	1
*44	25C4-192	Pelican Style Knife Guard	1
*45	302C8-7	Screw, Flat Hd. #4-40 x 3/16	2
*46	68C3-18	Pelican Shear Foot	1
*47	726C1-37	Pelican Shear Plate	1
48	200C1-13	Driver, Worker Bee	1
*49	820C1-126	Pelican Option Kit	1
50	25C4-197	Blade Guard, Plastic (Clear)	1
51	236C1-184	Decal, Blade Hazard	1

\* Indicates Optional Items





\* Indicates Optional Parts

To order replacement parts call Customer Service at (716) 856-2200. Please specify model and serial number of machine along with part number, description and quantity of parts in order.

**Eastman®**

Over a Century of Cutting Expertise

## **SAVE THESE INSTRUCTIONS**

The Battery pack is not fully charged out of the carton! First read the safety instructions below. Then follow charging note and procedures.

### **⚠ Important Safety Instructions (For Battery Packs and Charger)**

**⚠ WARNING:** When using electric tools, basic safety precautions should always be followed to reduce the risk of fire, electric shock, and personal injury, including the following:

### **READ ALL INSTRUCTIONS**

- Do not store -or- carry battery such that metal objects can contact exposed metal end. For example, do not place battery in aprons, tool boxes, pockets, drawers, desk, etc... with loose nails, screws, keys, etc... without battery cap. Battery pack could short circuit causing fire, burns, or damage to the battery.

**⚠ DANGER:** Never attempt to open the battery pack for any reason. If the housing of the battery breaks -or- cracks, immediately discontinue use and do not recharge.

- Do not incinerate the battery pack as it can explode in a fire. A small leakage of liquid from the battery cells may occur under extreme usage, charging, or temperature conditions. This does not indicate a failure. However, if the outer seal is broken and this leakage contacts your skin:
  - a.) Wash quickly with soap and water;
  - b.) Neutralize with a mild acid such as vinegar -or- lemon juice.
  - c.) If the battery liquid gets in your eyes, flush them with clean water for a minimum of ten (10) minutes and seek immediate medical attention.

**Medical Note:** The liquid is a 25-35% solution of potassium hydroxide.

- Charge batteries only with Eastman charger.
- Do not use charger in wet -or- damp conditions. It is intended for indoor use only. Do not use near sinks, tubs, etc... Do not immerse in water.
- Do not use the charger for any uses other than charging Eastman battery packs. Other batteries may explode.
- Do not operate charger with a damaged cord -or- plug...have them replaced immediately.
- Do not operate charger if it has received a sharp blow, been dropped, or otherwise damaged in anyway; contact your qualified Eastman representative for service.

- Do not disassemble charger; contact your qualified Eastman representative when service -or- repair is required. Incorrect assembly may result in risk of electric shock -or- fire. There are no consumer serviceable parts inside.
- For best results, do not charge batteries when they -or- the air temperature is BELOW +40° Fahrenheit -or- ABOVE +105° Fahrenheit.
- The charger is designed to operate on standard household electrical power (120 Volts AC). Do not attempt to use it on any other voltage. Be sure your power supply agrees with the nameplate marking.
- Unplug charger when not in use.
- Do not abuse charger cord. To reduce the risk of damage to the electric plug and cord, never carry charger by cord -or- sharply pull it to disconnect from receptacle. Keep charger cord from heat, oil, and sharp edges.
- Use only charger supplied by Eastman to recharge.

### **WORK AREA**

- Keep your work area clean and well lit. Cluttered and dark work areas invite accidents.
- Do not operate power tools in explosive atmospheres, such as in the presence of flammable liquids, gases or dust. Power tools create sparks which may ignite the dust or fumes.

### **ELECTRICAL SAFETY**

- Do not abuse cord. Never use the cord to carry the charger. Keep cord away from heat, oil, sharp edges or moving parts. Replace damaged cords immediately. Damaged cords may create a fire.
- Use battery pack designated for your tool. Use of any other batteries may cause risk of fire.

### **PERSONAL SAFETY**

- Stay alert, watch what you are doing and use common sense when operating the Worker Bee. Do not use tool while under the influence of drugs, alcohol, or medication. A moment of inattention while operating may result in serious personal injury.
- Dress properly, Do not wear loose clothing or jewelry. Contain long hair. Keep you hair, clothing and gloves away from moving parts. Loose clothing, jewelry, or long hair can be caught in moving parts.
- Avoid accidental starting. Be sure switch (A) is in locked or off position before inserting the battery pack. Carrying tools with you finger on the switch or inserting the battery pack into the tool with the switch on invites accidents.
- Use safety equipment. Always wear eye protection and dust mask for appropriate conditions.



**Limited Warranty.** Eastman warrants to the buyer that the Worker Bee shall be free from defects in materials or workmanship for a period of 6 months commencing on the date of invoice. Any goods or parts claimed by the buyer to be defective must be returned to Eastman, freight charges prepaid, within the 6 month warranty period. If Eastman determines that the goods or parts are defective in materials or workmanship, Eastman's sole obligation under this warranty shall be, at Eastman's sole option, to repair or replace the defective goods or parts or to provide to the buyer a credit equal to the portion of the purchase price allocable to the defective goods or parts. This warranty shall not apply if defects are caused by product misuse or neglect, if the machine has been altered or modified by the buyer, or if other than genuine Eastman belts, emery wheels, knives or parts are used in the machine. THIS WARRANTY IS THE ONLY WARRANTY APPLICABLE TO THIS PURCHASE. SELLER DISCLAIMS ALL OTHER WARRANTIES, EXPRESS OR IMPLIED, INCLUDING, BUT NOT LIMITED TO, THE IMPLIED WARRANTIES OF MERCHANTABILITY AND FITNESS FOR A PARTICULAR PURPOSE.

**Limitation of Liability.** Eastman's liability to the buyer, and the buyer's remedies from Eastman, whether in contract, negligence, tort, under any warranty or otherwise, shall be limited to the remedies provided in the foregoing Limited Warranty. In no event shall Eastman have any responsibility or liability to the buyer for (a) any special, indirect, incidental, or consequential damages, including, but not limited to, loss of use, revenue, or profit, even if Eastman has been advised of the possibility of such damages, or (b) any claim against the buyer by any third party. The price stated for the product sold is a consideration for limiting Eastman's liability.

**Eastman®**

*Over a Century of Cutting Expertise*

779 Washington St., Buffalo, N.Y. 14203-1396 U.S.A. • (716)856-2200 • Fax (716)856-1140 or (716)856-2068

Manufacturers of Eastman Cloth Cutting and Cloth Spreading Machines

[www.EastmanCuts.com](http://www.EastmanCuts.com)