

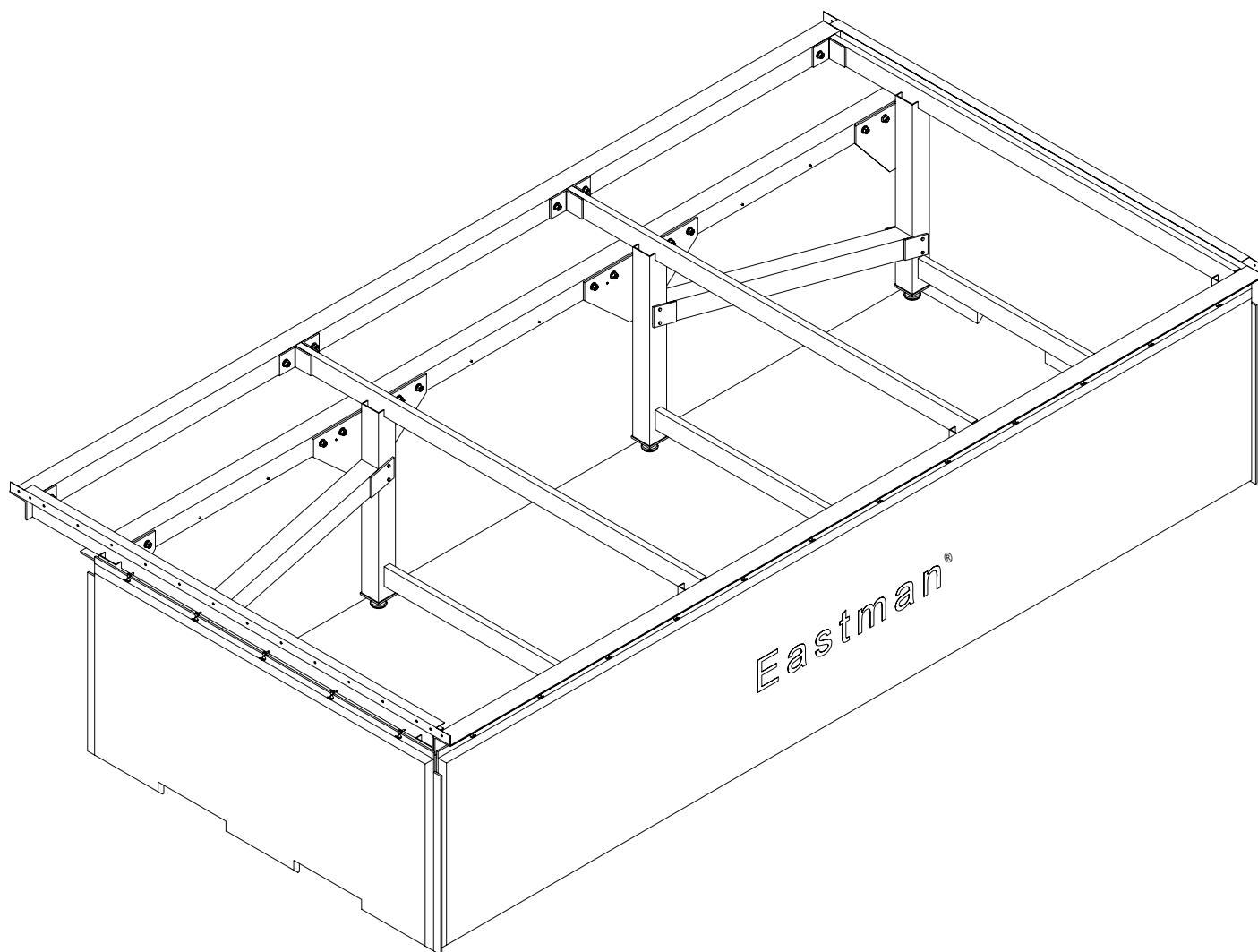
Eastman®

THE EASTMAN®

EasiWrap 68-26512-MSTL ***Static Table Cutting System***

Instruction Manual & **Illustrated Parts List**

Please read completely before attempting
to install your ***EasiWrap*** curtain system.



Eastman®

Over a Century of Cutting Expertise

779 Washington St., Buffalo, N.Y. 14203-1396 U.S.A. • (716)856-2200 • Fax (716)856-1140 or (716)856-2068
Manufacturers of Eastman Cloth Cutting and Cloth Spreading Machines

www.EastmanCuts.com

Table of Contents

Safety and Indemnification.....	3
General Safety Precautions.....	3
EasiWrap Details.....	3
Tools Required for Installation.....	3
Installation Instructions.....	4
Replacing E-Stop Push Button Mounting Brackets.....	6
Bracket Mounts for Blower Ventilation.....	7
Technical Data.....	8

IMPORTANT

The purchaser must instruct all operators on the proper use of this equipment. All standard industrial safety measures and equipment should be provided to protect the operator. Operators must be cautioned that improper or careless use of this equipment may cause personal injury. If you do not have qualified operators to instruct new persons, contact your EASTMAN sales representative or EASTMAN factory direct.

Electrical connections and servicing to this equipment should be made by a qualified electrician who is familiar with applicable codes and regulations. Disconnect this equipment from electrical power source before proceeding with any disassembly for adjustment or installation.

Safety and Indemnification

During the life of the machine, the purchaser agrees to provide to all machine users (including its own employees and independent contractors) all relevant safety information, including warning labels and instruction manuals. The purchaser also agrees to maintain the safety features and working condition of the machine, and to adequately train all users in the safe use and maintenance of the machine. The purchaser agrees to defend, protect, indemnify, and hold Eastman Machine Company and its subsidiaries harmless from and against all claims, losses, expenses, damages, and liabilities to the extent that they have been caused by the purchaser's failure to comply with the terms and instructions of this manual.

General Safety Precautions



WARNING

This machine is equipped with very sharp and dangerous tools. Keep hands, arms, and hair away from the cutting area and drive system at all times. Safety gloves, glasses, and appropriate clothing may prevent serious personal injuries.

Disconnect all power sources to the machine when it is not in use or during routine maintenance, including cleaning and lubrication.

The purchaser must instruct all operators in the proper use of the machine according to the instructions in this manual. This training must include instruction on the potential safety hazards arising from the use or misuse of the machine. In addition to such training, the purchaser should provide written work instructions as necessary to ensure correct use of the machine for specific cutting applications.



WARNING

The purchaser must provide appropriate safety measures and equipment as recommended in this manual. Observe all statutory requirements concerning the use of hazardous machinery that apply to your location.

Do not modify this machine or disable safety features. Unauthorized modification may result in serious personal injuries to the user. A qualified electrician, familiar with applicable codes and regulations, must make electrical connections to this machine. Misuse of this machine or use of this machine as part of another machine may result in serious personal injuries to the user.

Safety labels must be kept clean and legible at all times. Call the Eastman factory to order replacement labels.

EasiWrap Details

This add-on feature for the Eastman Static Table Cutting System, acts as an acoustic blanket to help with sound reduction, concealing under-tabling mechanics and wiring, and at the same time bringing a more overall appealing look to your machine.

Features:

- Outer barrier made from silicone impregnated, fiber glass cloth.
- Quiet interior barriers consist of PVC, and "Quiet Glass™" insulation.
- Easy attachment to table using eyelet hooks that are fastened directly to table frame.
- Velcro latching system for corners and in between panels.
- Overall dramatically reduces sound levels in the area surrounding the machine.
- Hides table plumbing fixtures, blower motors, and wiring harnesses.
- Water and oil resistant.
- Flame retardant for added safety.
- Priced per linear foot, making The EasiWrap adaptable to any table size.

Tools Required for Installation:

- Hand Drill (3/8 Regular, Variable Speed)
- Drill Chuck Socket Adapter for a 5/16" (8mm) Socket
- 5/32" (4mm) Drill Bit (for Pilot Holes)
- Tape Measure and Marking Tool
- Socket Wrench with a 3/8" (9.5mm) Socket Head
(For Blower Motor Bracket Mounts)



WARNING

Please disconnect all power sources before installation of EasiWrap curtain system.

Eastman®

Over a Century of Cutting Expertise

Installation

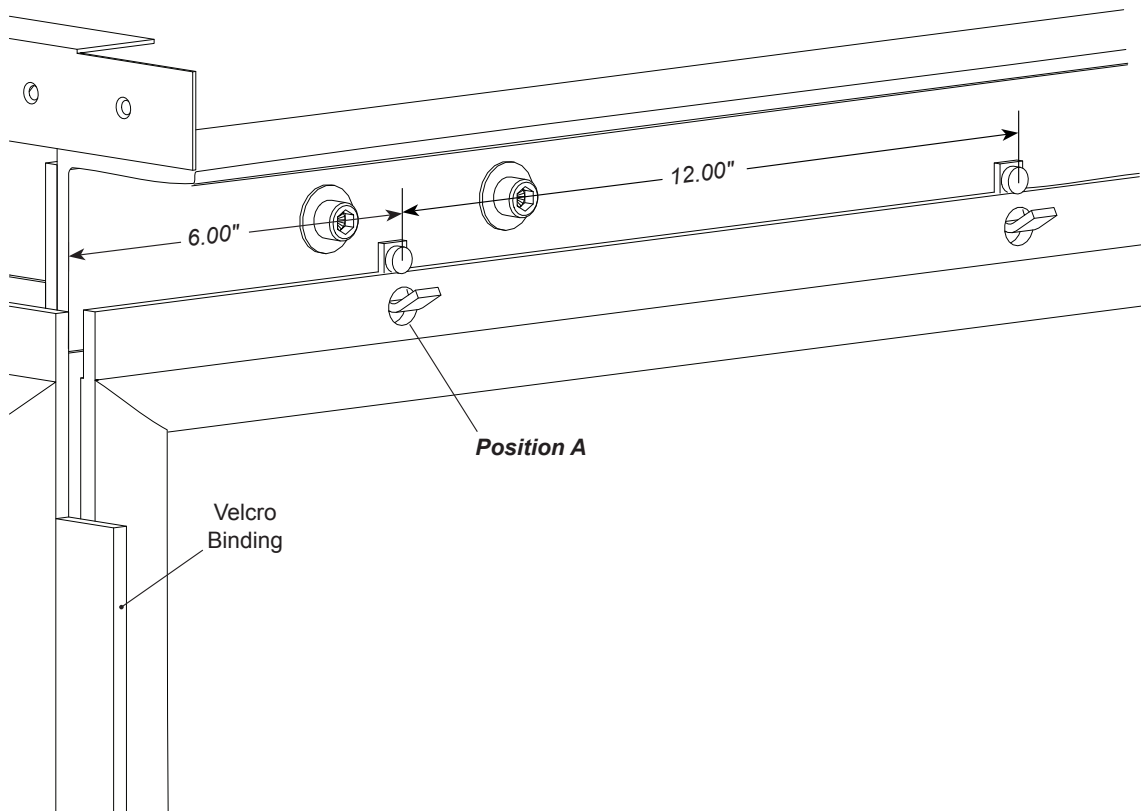
Before beginning installation of your EasiWrap curtain system, please make sure your power sources to the table have all been turned off, as some tables may require electrical connections to be unplugged during this process.

Step 1: Each EasiWrap Sound curtain is made to custom fit your static table cutting system. In order to ensure the separate sections of the curtain result in a seamless fit around the table, first measure the distance from the end eyelet hole to the edge of the curtain. This distance should be around approximately 6.0" (15.25cm), with the following holes evenly spaced 12.0" (30.5cm) apart (**Figure A**). *Note: the EasiWrap is custom made to fit your machine, so not all table sizes will follow suit.*

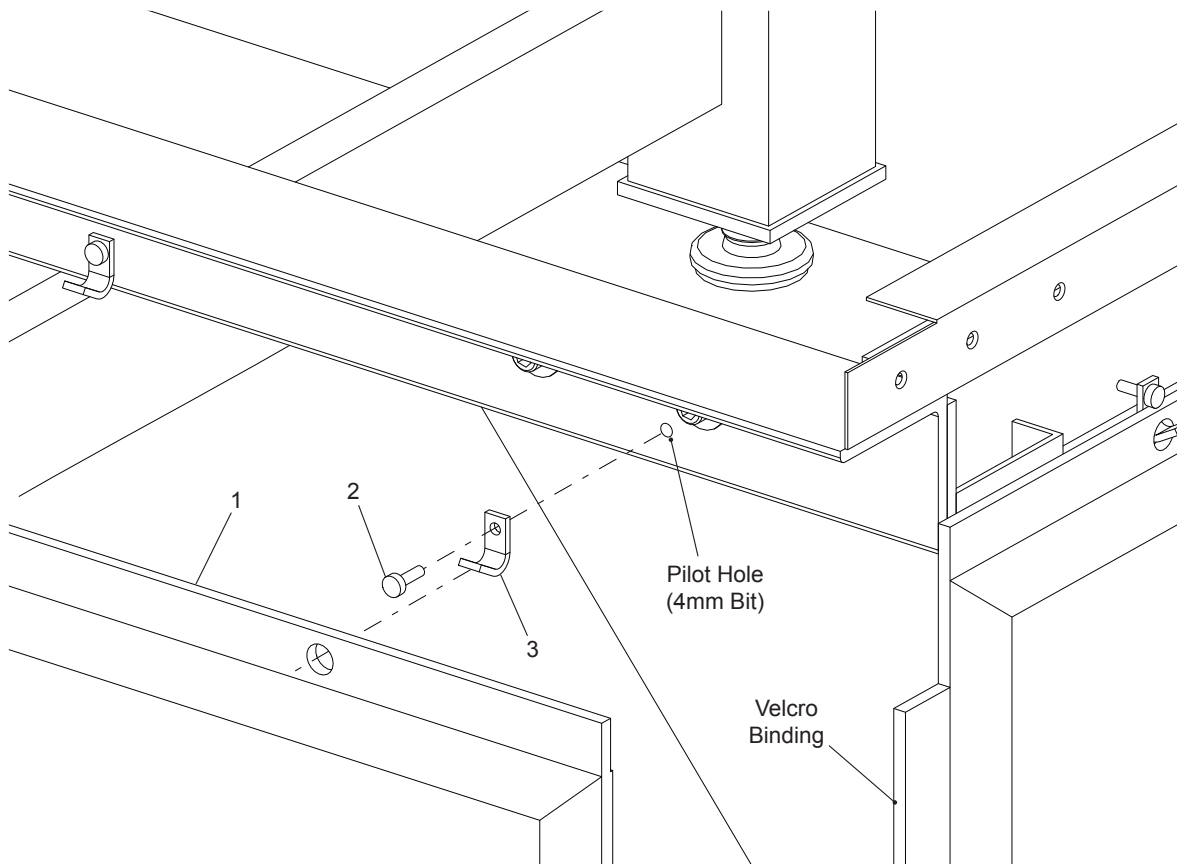
Step 2: Once you ensure the measurements of the eyelet holes, you may begin hanging your EasiWrap curtain. The EasiWrap is designed to fit the table with the bottom edge just above ground level. For best results, hang the curtain as low as possible with minimal contact to the floor. After you have determined the optimal height to hang the curtain, drill the first pilot hole for the eyelet closest to the table edge, (**Position A**).

Step 3: Drill pilot holes using a 5/32" (4mm) bit. After the first hole has been drilled, fasten an eyelet hook and hex screw in place using a 5/16" (8mm) hex drive (**Figure B**). Hang the edge of the curtain on the hook. At this point, go to the opposite end of the current section and repeat the process, allowing the curtain to hang at either end by the fastened eyelet hooks. *Note: EasiWrap sections will typically come in 8ft lengths unless otherwise specified.* It is important during this step to have the curtain section taught as much as possible. Too much slack in the center will cause the lengths to be off as you make your way around the table. Likewise this can also cause the curtain to wrinkle, thus consequently reducing the effectiveness of the sound reduction feature it is intended for.

Step 4: At this time you should now have a level height established as to where the bottom of the curtain is just brushing the floor. Find the center eyelet, pilot and fasten another hook into position giving the curtain three points of contact along the frame. *Make any adjustments that may be needed towards leveling the curtain edge along the table.* Starting back from (**Position A**), begin to pilot and fasten each eyelet hook, while simultaneously hanging the curtain at each contact point for the best fit.



(Figure A)



(Figure B)

ITEM	PART NO.	DESCRIPTION	QTY.
1	373-99-12	Screw, Hex Wash Head, Self Tap, Slot Tek #10 x 3/4"	*
2	54-28345	Eyelet Hook	*
3	67-26976-MSTL	EasiWrap Sound Curtain	**

MSTL = Machine Size/Table Length

* = Quantity Dependant Upon Table Size

** = Priced per Linear Foot, Length Dependant on Table Size

Note: On certain tables, the hook placement will interfere with certain components that have been mounted in the path of the desired layout. Examples, emergency stop push buttons, blast gate on/off switches, frame socket head screws, etc. In these situations simply leave the hook mount absent for the given location and move to the next eyelet.

Step 5: As you hang each section of the curtain, be sure that the Velcro Bindings (**Figure B**) are aligning correctly in order to properly seam the sections of the EasiWrap around the table.

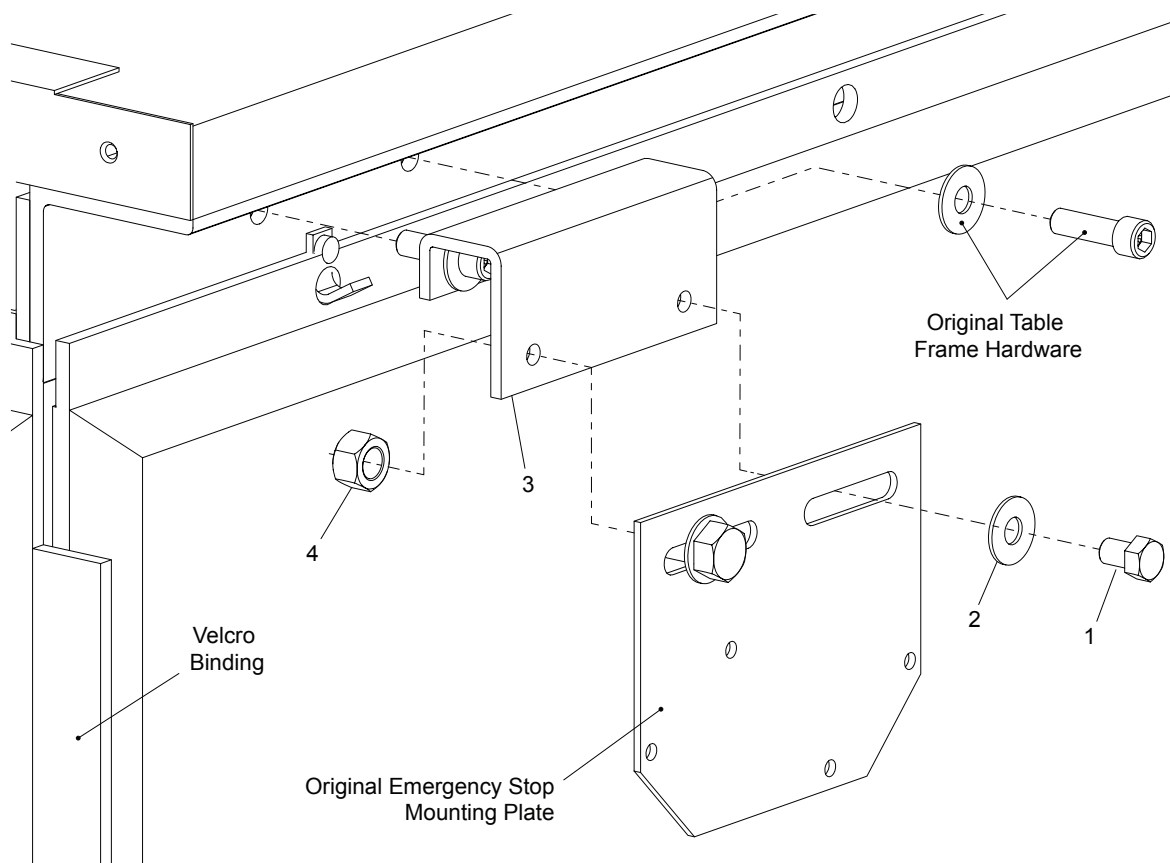
Step 6: After all four sides of your table have been properly fitted with the EasiWrap curtain, asses the components that have been covered up by the wrap. The following pages will give solutions for mounting these components on the outside of the wrap to maintain their functionality.

Item numbers are for reference only.
Please Specify PART NUMBER when
ordering replacement parts.

Eastman®

Over a Century of Cutting Expertise

Replacing Emergency Stop Push Button Mounting Brackets



(Figure C)

When installing the EasiWrap curtain, the standard frame mounted E-Stop plates become covered rendering them ineffective. The goal of the bracket kits are to extend the E-Stop past the thickness of the EasiWrap so that the push buttons can be mounted in a functional position. As shown in **(Figure C)**, the bracket extensions utilize the pre-existing frame hardware for mounting. Once the bracket has been fastened to the frame, continue to use the kit hardware to fasten the *original E-Stop mounting plate* in place.

Note: In some cases, the wires connecting the E-Stop push buttons may have to be lengthened to account for the extra distance created by the new bracket mounts. Extra cordage lengths can be achieved simply by adjusting the cable zip-tie placements on the underside of the table.

ITEM	PART NO.	DESCRIPTION	QTY.
1	310C18-2	Hex Hd. Cap Scr. 1/4-20x3/4	4*
2	402-34	Washer, Flat 1/4" Regular	4*
3	54-28611	Bracket, E-Stop w/EasiWrap	2*
4	203-34	Nut, Hex 1/4-20	4*

*Quantities may vary based on table length.

Item numbers are for reference only.
Please Specify PART NUMBER when
ordering replacement parts.

Bracket Mounts, for Blower Ventilation

ITEM	PART NO.	DESCRIPTION	QTY.
1	54-28594	Bracket, Blower Ventilation	2
2	410-38	Washer, Flat 3/8"	4
3	216-38	Nut, Flange Lock Hex, 3/8 x 1"	4

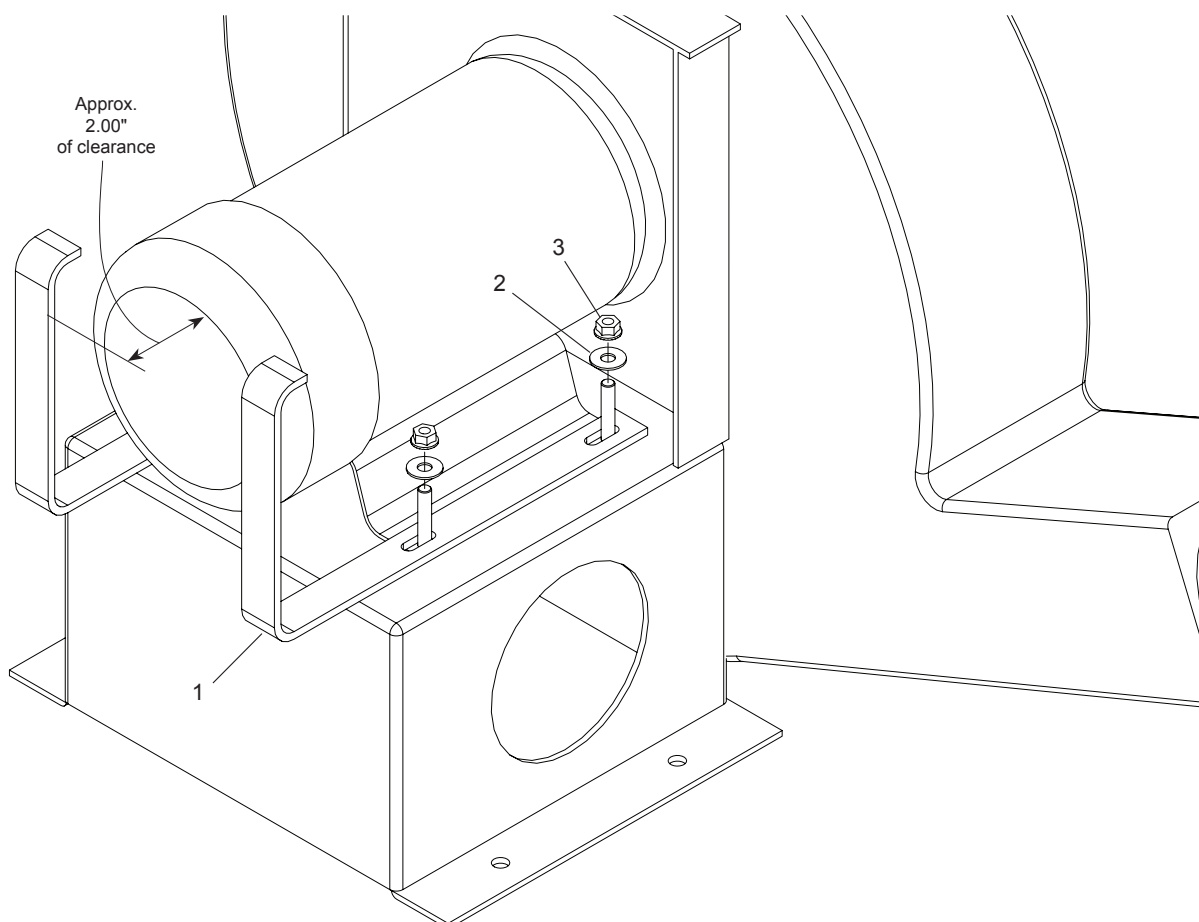
These brackets mounts are placed in order help to avoid a "vacuum effect" between the EasiWrap curtain and the back of the blower motor. With the installation of these components, the curtain will be offset a constant distance from the curtain. This will ensure a proper in-flow of air to the motor after the curtain installation.

Vacuum/blower adjustments will not be necessary after the installation of EasiWrap curtains.

Installation

Step 1: Remove the nuts and washers already in place for mounting of the blower motor. Take the bracket mounts and place them on top of the four 3/8" studs that are in place. Shown in **(Figure D)**.

Step 2: Use the washers (Item 2) and the flange nuts (Item 3), to fasten the brackets on the blower mount using a 3/8" (9.5mm) socket wrench. *For optimal ventilation behind curtain, pull the Bracket Mounts out as far as possible away from the table's center before completely tightening down.*



(Figure D)

Eastman®

Over a Century of Cutting Expertise

Technical Data **EASTMAN® EasiWrap**

EasiWrap

*Sound Level Reduction..... -5dbA
Standard Sectional Curtain Lengths..... 8.0ft. (2.4m)
Approx. Material Width 1.5in. (3.8cm)
Material..... Interior: Polyvinyl Chloride and "QuietGlass"
Exterior: Silicone Impregnated Fiberglass Based Cloth

* Sound Level Reduction may vary with room size & construction

Limited Warranty. Eastman warrants to the buyer that the EasiWrap curtain shall be free from defects in materials or workmanship for a period of 180 days commencing on the date of invoice. Any goods or parts claimed by the buyer to be defective must be returned to Eastman, freight charges prepaid, within the 180-day warranty period. If Eastman determines that the goods or parts are defective in materials or workmanship, Eastman's sole obligation under this warranty shall be, at Eastman's sole option, to repair or replace the defective goods or parts or to provide the buyer a credit equal to the portion of the purchase price allocable to the defective goods or parts. This warranty shall not apply if defects are caused by product misuse or neglect, if the machine has been altered or modified by the buyer, or if other than genuine Eastman belts, emery wheels, knives or parts are used in the machine. THIS WARRANTY IS THE ONLY WARRANTY APPLICABLE TO THIS PURCHASE. SELLER DISCLAIMS ALL OTHER WARRANTIES, EXPRESS OR IMPLIED, INCLUDING, BUT NOT LIMITED TO, THE IMPLIED WARRANTIES OF MERCHANTABILITY AND FITNESS FOR A PARTICULAR PURPOSE.

Limitation of Liability. Eastman's liability to the buyer, and the buyer's remedies from Eastman, whether in contract, negligence, tort, under any warranty or otherwise, shall be limited to the remedies provided in the foregoing Limited Warranty. In no event shall Eastman have any responsibility or liability to the buyer for (a) any special, indirect, incidental, or consequential damages, including, but not limited to, loss of use, revenue, or profit, even if Eastman has been advised of the possibility of such damages, or (b) any claim against the buyer by any third party. The price stated for the product sold is a consideration for limiting Eastman's liability.

Eastman®

Over a Century of Cutting Expertise

779 Washington St., Buffalo, N.Y. 14203-1396 U.S.A. • (716)856-2200 • Fax (716)856-1140 or (716)856-2068

Manufacturers of Eastman Cloth Cutting and Cloth Spreading Machines

www.EastmanCuts.com