

**THE EASTMAN®**  
***EasiLabel Labeling System***  
***Model: L9000MS***

***Instruction Manual***



**Preliminary**

Please read completely before attempting  
to operate your **EASTMAN EasiLabel Labeler**

## Table of Contents

Safety Information .....	3
INSTALLATION .....	4
Conveyor Preparation .....	4
Place Machine on Table .....	4
Cables and Airline Installation .....	4
Machine Familiarization .....	4
User Interface Terminal Familiarization .....	5
Operation .....	7
Zero Table (Machine Home Position) .....	7
Loading New Files for Cutting/Labeling .....	7
Load Material .....	7
Label Threading .....	7
Operating Adjustments .....	8
Label Tension Adjustment .....	8
Label Air Pressure Adjustment .....	8
Service and Maintenance .....	8
Recommended Spare Parts List .....	8
EasiCut Software Section .....	9
Software File Relationships .....	9
Machine Settings .....	12
GLOSSARY .....	20
Service Record .....	25
TECHNICAL DATA .....	26

## IMPORTANT

The purchaser must instruct all operators on the proper use of the equipment. All standard industrial safety measures and equipment should be provided to protect the operator. Operators must be cautioned that improper or careless use of this equipment may cause personal injury. If you do not have qualified operators to instruct new persons, contact your Eastman sales representative or Eastman factory direct.

Disconnect electrical power from source before proceeding with any installation, adjustment or repair of the EasiLabel Labeler.

Your Eastman EasiLabel Labeler Print Head is designed to travel at high speed in both directions. Equipment should be set up with a minimum 3 foot (1 meter) clear path at front and rear of machine. All personnel should be instructed to wear safety glasses and stand well clear of the EasiLabel Labeler when in operation.

---

## Safety Information

Throughout this manual, safety information is presented by the use of the terms **WARNING**, **CAUTION**, and **NOTE**. These terms have the following meanings:



### **WARNING**

A warning contains critical information regarding potential safety hazards that can occur during proper use or misuse of the machine. Failure to follow these procedures may result in serious personal injury to the user.



### **CAUTION**

A caution contains instructions for the use or maintenance of the machine. Failure to follow these procedures may result in damage to the machine. Supplementary information may be given in a Note.



### **ELECTRICAL HAZARD**

An electrical hazard calls attention to a procedure, practice, or the like, which, if not correctly performed or adhered to, could result in personal injury. Do not proceed beyond a Electrical Hazard.

## Safety and Indemnification

During the life of the machine, the purchaser agrees to provide to all machine users (including its own employees and independent contractors) all relevant safety information, including warning labels and instruction manuals. The purchaser also agrees to maintain the safety features and working condition of the machine, and to adequately train all users in the safe use and maintenance of the machine. The purchaser agrees to defend, protect, indemnify, and hold Eastman Machine Company and its subsidiaries harmless from and against all claims, losses, expenses, damages, and liabilities to the extent that they have been caused by the purchaser's failure to comply with the terms and instructions of this manual.

## General Safety Precautions



### **WARNING**

- This machine is equipped with fast moving labeler head. Keep hands, arms, and hair away from the labeling area and drive system at all times. Safety gloves, glasses, and appropriate clothing may prevent serious personal injuries.
- Disconnect the power supply to the machine when it is not in use or during routine maintenance, including cleaning and lubrication.
- The purchaser must instruct all operators in the proper use of the machine according to the instructions in this manual. This training must include instruction on the potential safety hazards arising from the use or misuse of the machine. In addition to such training, the purchaser should provide written work instructions as necessary to ensure correct use of the machine for specific cutting applications.
- Do not modify this machine or disable safety features. Unauthorized modification may result in serious personal injuries to the user. Electrical connections to this machine must be made by a qualified electrician familiar with applicable codes and regulations.
- Safety labels must be kept clean and legible at all times. Call the Eastman Machine factory to order replacement labels.

The Eastman **EasiLabel Labeler** is shipped partially disassembled with all the necessary parts for proper setup and operation. To get the best performance, familiarize yourself with all the functions and adjustments of this equipment. Before any operation can take place, it is important that you carefully read and follow the instructions in this manual in the same sequence in which they are presented.

## INSTALLATION

### Conveyor Preparation

The ETS-EC3 Conveyor Should be completely installed before the EasiLabel labeler is mounted on the conveyor. If the conveyor is not installed, Install it at this time.

### Place Machine on Table

The **EasiLabel Labeler** weighs approx. 200 lbs. (90 Kg.) uncrated for a 72" machine. Wooden braces are strapped across the underside of its cross tube and the forklift arms should be raised to those braces when machine is lifted.



### CAUTION

When placing forklift arms under cross Tube, use care not to damage tube or cover.

Locate the labeler mounting holes on each side frame of the conveyor. Place the **EasiLabel Labeler** on the conveyor. Secure the labeler to the conveyor side frames with mounting hardware provided.

### Cables and Airline Installation

Locate five (5) labeler wiring cables and one (1) air line. Secure the wiring cables to the non-operator side of the labeler. The cable ends are labeled for proper installation. Remove the labeler back cover. Connect the airline to the regulator and replace cover.

Feed the cable and air line under the conveyor and through the yellow/black floor cable protector. Match the cable to the mating connector and secure cables in place.

- 1 cable to computer.
- 1 cable to a power supply.
- 1 cable to conveyor E-box (Large box).
- 2 cable to Gantry E-box (Small box).

**Note:** Voltage varying more than 10% (11V for 110V machine, 22V for 220V machine) may damage your system's electronics.



The EasiLabeler requires 25 - 30 PSI compressed air. Connect air line to air supply.

## Machine Familiarization

The **EasiLabel Labeler** is controlled automatically through the computer software. Manual controls are located on the labeler front control panel and used in conjunction with the controls on the cutting gantry control panel.

Computer Display: Display used for setup and run of your Gantry, conveyor and labeling system. Not Shown.

Computer: Stores running programs and user labeling files. Disk drive available for loading labeling files. Not Shown.

E-Box (Small): Electrical controls box gantry and Labeler. Not Shown.

E-Box (Large): Electrical controls box for conveyor. Not Shown.

Conveyor: Machine used to advance material. Equipped with cutting surface drive belt. Not Shown.

Cutting Gantry: Machine used to carry the cutting tool head and manually control the EasiLabel Labeler. Not Shown.

## EasiLabel Labeler

Back Frame: Non-operator side of labeler. The air pressure regulator is located under back cover.

Labeler Tool Head: Tool used to apply labels to material.

Emergency Off: Activates power to all drive circuits. Pull on, push off.

Main Power On/OFF: Activates power labeler gantry.

System Pause: Push to pause (stop) complete system when in automatic labeling/cutting mode. Press NEXT on UIT to resume.

Labeler Take-up: Press to activate power to label take-up spool.

Labeler Feed: Press to manually feed label.

Labeler On: Press to activate labeler tool head.

Labeler Reset: Press to Initialize printer.



*UIT Terminal*

### **User Interface Terminal Familiarization**

*(Located on the cutting gantry)*

The UIT (User Interface Terminal) features a 33 key membrane keypad and a four line display. Commands are issued via the keypad and information is communicated back to the user through the display. Through the UIT the operator may position the plotter carriage, enable automated movement, and manually cut and mark.

Commands are sent to the computer by pressing specific keys or key sequences on the UIT. Each key on the UIT can have a function and characters related to that key (note that not all keys have both a function and characters). Commands that require data entry following the pressing of a FUNCTION key the UIT will automatically set itself in anticipation of the expected type of input.

Some commands require only one key to be pressed while other commands require multiple keystrokes and may sometimes prompt the operator for input.

A description of commands follows:

Zero Table: Pressing the ZERO TABLE key activates the zeroing function. The carriage will move to the home limit switches in X,Y and Z and then move the distance of the X Y and Z home offset values in the Machine Setting menu in Easicut. This point is set as table home. The Labeler tool head will move to the home position.

Scan: Pressing SCAN allows the user to scan to a specific panel within the current cut file . Press SCAN and the UIT will prompt f or a panel number . The UIT will automatically go into Alt Left mode and allow the user to select a panel number. Press ENTER to load the file.

Jog (LIMP on newer systems): Pressing JOG toggles the plotter manual move speed to the LIMP VELOCITY value in Machine Setting.

UP: Pressing UP causes the plotter carriage to move in the positive direction of the Y axis. The plotter will move as long as the key is pressed down ( or until the carriage encounters an end stop).

Next: Pressing NEXT causes the plotter to cut and or draw the active panel in the current cut file.

Zero Panel: Pressing the ZERO PANEL key resets the internal counters so that the local home position is set to the current plotter position. The Z-axis is rotated and reset to 0\_.



**Pen:** Pressing the PEN key toggles the plotter pen device to change its current state of either up or down causing the pen to drop or lift. The default pen device state is up.

**Cut Down:** Pressing the CUT DOWN key causes the primary cutter to drop to the cutting surface.

**Down:** Pressing DOWN causes the plotter carriage to move in the negative direction of the Y-axis. See UP for more information.

**Panel Home:** Pressing the PANEL HOME key causes the plotter carriage to move to the current panel home position set either by the most recent panel zero or as set in the current cut file.

**Table Home:** Pressing the TABLE HOME key causes the plotter carriage to move to the table home position.

**Rotate CCW:** Pressing the ROTATE CCW key causes the Z-axis shaft to rotate counter clockwise. The shaft will rotate as long as the key is pressed down. If toggled into limp mode the shaft will rotate slowly.

**Left:** Pressing LEFT causes the plotter carriage to move in the negative direction of the X-axis. See UP for more information.

**Abort:** Pressing the ABORT key will cause the plotter carriage to come to an immediate and controlled stop. Once stopped the UIT will prompt you to either press ABORT or NEXT. Pressing ABORT will exit from the current panel or motion. Pressing NEXT will continue the current panel or motion.

**Offset:** Pressing the OFFSET key will cause the plotter carriage to move from its current position to the offset position of the primary cutter. This effectively moves the primary cutter into position over the reference point (usually the pen device or a laser pointer).

**Rescan:** Pressing the RESCAN key causes the plotter program to reset to the top of the current panel in the current cut file.

**Rotate CW:** Pressing the ROTATE CW key causes the Z-axis shaft to rotate clockwise. The shaft will rotate as long as the key is pressed down.

**Right:** Pressing RIGHT causes the plotter carriage to move in the positive direction of the X-axis. See UP for more information.

**V:** The V key has no function value and only works during data entry when the UIT is set to ALT RIGHT mode to allow input of alphanumeric characters.

**.W:** The W key has no function value and works during data entry in either ALT RIGHT or ALT LEFT mode to allow input of alphanumeric characters.

**Rotate 90 :** Pressing the ROTATE 90\_ key causes the Z shaft to rotate 90\_ counter clockwise from its current position.

**Y Z:** The Y Z key has no function value and works during data entry in either ALT RIGHT or ALT LEFT mode to allow input of alphanumeric characters.

**INS:** This key is not active. (Reserved for future enhancements).

**\_(Cursor Up):** This key is not active. (Reserved for future enhancements).

**Back Space:** Pressing the BACKSPACE key will cause the cursor to move one position to the left when in data entry mode.

**Alt:** Pressing the ALT key toggles the current mode of the UIT. The ALT key is only active during data entry. Pressing the ALT key will toggle the UIT between ALT RIGHT and ALT LEFT to allow the user to access all alphanumeric characters on each of the keys. A left or right arrow in the upper right of the display shows the current mode.

**\_(Cursor Left):** Pressing the \_ key will cause the cursor to move one space left and erase the current character during data entry.

**\_(Cursor Down):** This key is not active. (Reserved for future enhancements).

**\_(Cursor Right):** This key is not active. (Reserved for future enhancements).

**Enter:** Pressing the Enter key causes the contents of the command line to be sent to the computer. This key is only active during data entry mode.


## Operation

After setup is complete and the power and airline is connected, the EasiLabel Labeler is now ready for Initialization.

### Important

To stop the cutting/labeling system at any point during operation, either:

- Press the any Emergency Stop button (Red).
- Press Machine Pause button (yellow) on main control panel.

 **WARNING:** Machine Cut Zone should always be cleared before any automatic cutting/labeling takes place.

- 1) Power up the computer and display by pressing the ON (I) buttons. The computer display will run through the computer start-up program.
- 2) Power up the Gantry/Labeler E-box (small) by pressing the ON (I) button.
- 3) Power up the Conveyor E-box (small) by pressing the ON (I) button.
- 4) Turn the cutting gantry power switch (black) to on position.
- 5) Pull the Emergency Stop buttons for the cutting gantry and the labeler to activate power to the drive circuit.
- 6) Press the labeler ON button to the on position (in).
- 7) Press the labeler Take-up button to the on position (in).

Start the EasiCut software by double clicking the EasiCut software icon on the computer display. This will load the default test.cmd file. Select OK.

The log in screen will appear. Enter the user name and password. Select OK when complete. The UIT Display will show DESIGN LOADED. Press ENTER on UIT Terminal to continue.

### Zero Table (Machine Home Position)

Press ZERO TABLE on UIT Terminal to locate the "cutting machine home position". This will accelerate machine to the end limit switched and back to "machine home position".

The UIT display will show TABLE ZERO OK when task is complete. Press enter on UIT terminal to except. The UIT display will show ready.

## Loading New Files for Cutting/Labeling

Load a file by opening the **file** menu and clicking on the desired file. Enter label text and press enter on the keyboard to accept. Select the "PLOT" icon on the computer display to load design. Press ENTER on the UIT Terminal to accept new design.

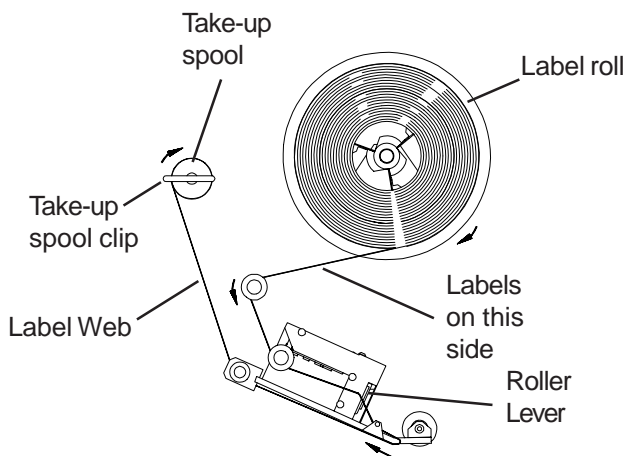
Note: Files are organized by type and are displayed on the menu according to which type is selected. For example, if you wish to use a file generated in CMD format, open the **list files of type** menu and select CMD. The **file** menu will then display all files with a CMD extension.

## Load Material

Load material onto conveyor and under labeler. The labeler laser pointer is the location of the first cut pattern.

Move the laser pointer in/out to locate the start/cut position on the material. Press "Zero Panel" to except.

Turn on the cutting tool switch and the conveyor vacuum. Press the "Next" button on the UIT terminal to begin cutting.



Threading Diagram

## Label Threading

Press Labeler ON (green) button to turn off printer. Remove take-up spool clip. Lift the roller lever to separate the printer rollers. Discard used label web material and label roll core. Load new label roll as shown. Release roller lever. Press Labeler ON button to continue.

### Operating Adjustments

This machine is adjusted and tuned at the factory for optimal performance. No Adjustments other than normal setup are necessary. However, if after continued use the performance level becomes unacceptable, the following procedures should be carried out before repairs are considered.

#### Label Tension Adjustment

The label tension adjustment is located under the labeler tool head cover. Remove the cover to access the take-up clutch. Rotate the knurled adjusting knob clockwise to increase and counterclockwise to decrease tension.

#### Label Air Pressure Adjustment

The labeler pressure regulator is located on the back side frame. To adjust, remove back cover. Locate the regulator valve. Pull the "Adjust" knob up and turn clockwise to increase pressure and counter clockwise to decrease pressure. After adjustment is made, push knob down to lock in place.

### Service and Maintenance

#### Daily

- Blow off entire machine and Cable Carrier using low pressure compressed air (required twice a day depending on material).
- Check safety cams for proper location.
- Lubricate Linear Bearing with oil cloth.

#### Weekly

- Check for unusual wear and determine why.

#### Bi-Monthly

- Check entire machine for loose nuts and bolts.

#### Monthly

- Inspect Cable Carrier loose nuts, bolts or worn parts.

### Recommended Spare Parts List

Item	Description	Qty.
54-26214-4	Roller Quick Release Pin	1
54-26031-4	Spring Clip, Label Take-up Roller	1
67-26060-4	Printer	1
31-26165	Printer Controller Board	1
10-26043-1	Interface Board	1
10-00904-2	Labeler "Y" Board	1
10-26044-1	Labeler Power Supply Board	1
67-26069	Labels, 1" x 2", 5500/Roll, 1/2"Index	A/R
67-26069-1	Labels, Double 1" x 1", 5500/Roll	A/R
67-26069-2	Labels, Double 1" x 1", Dot-Matrix	A/R
67-26069-4	Labels 4" x 2.5", 2300/Roll, 11/32 Index	A/R
67-26069A	Labels 1" x 2", 5500/Roll, 11/32 Index	A/R

A/R -As Required

## EasiCut Software Section

### Software File Relationships

EasiCut is Eastman Technology's Windows 95 based plotter software. When opened, EasiCut reads in several data files to initialize the plotter's settings. These data files are ASCII text files with specific formats, which must be correct to be read. Some files are edited through the EasiCut Windows 95 interface, while others may be accessed in MS-DOS. All are located in the PLOTTER\PLOTTER directory. Following is a short description and a chart of the various files.

**PLOTTER.KEY:** required on all machines using a UIT, required on some older M90 models. Maps the keypad data coming from the UIT.

**DESIGN.CMD:** the file containing a pattern's coordinates and commands read by PLOTTERW. EasiCut updates DESIGN.CMD every time the plotter operator loads a new cut pattern. CMD is Eastman Technology's proprietary file format. EasiCut to CMD automatically converts files generated in other formats when the plotter operator selects them.

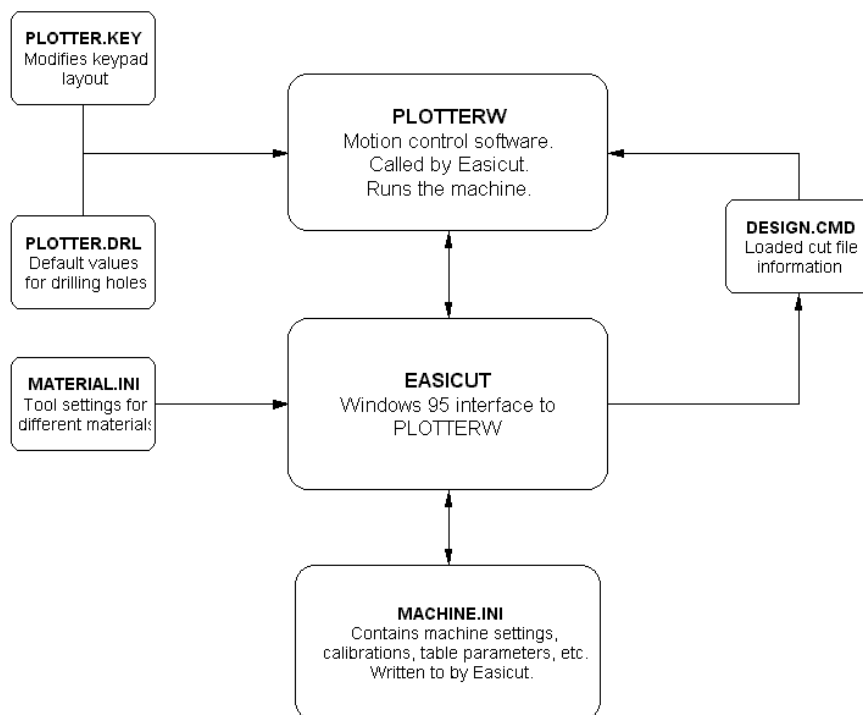
**MACHINE.INI:** contains values pertaining to calibration, velocity profiling, table dimensions, and layer to tool mapping. EasiCut writes to this file as changes are made in the Machine Setting window. MACHINE.INI is read by EasiCut, modified as necessary (for example, to accommodate a change in material) and sent to PLOTTERW.

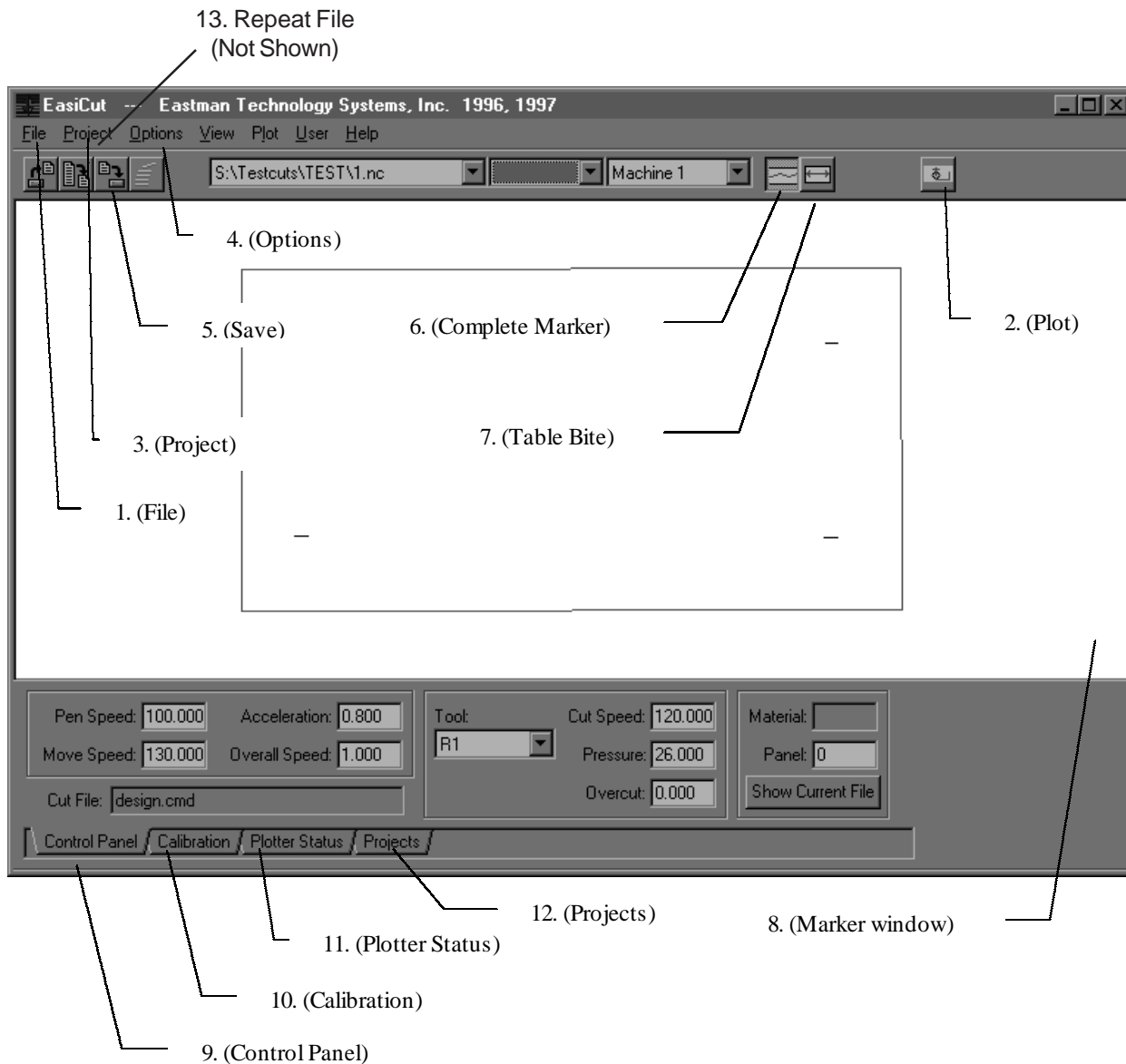
**PLOTTER.SRV:** optional. Used only on plotters with laser cutting device. Contains default values for laser test firing and troubleshooting.

**PLOTTER.DRL:** required only when <DRIL> function is called by CMD file. Contains default values used by <DRIL> function when specified in CMD file.

**MATERIAL.INI:** contains tool control information relating to different material types. Written to and accessed by EasiCut.

### ETS motion control software functions





The main screen displayed when Easicut is running.  
(Easicut Version 1.04H)

## EASICUT Software

Easicut is Eastman Technology's Windows 95 based operating software. It is used to run the machine as well as setting tuning parameters. Following are a sample of Easicut menus and screens with brief descriptions of their use.

1. The **File** menu is used to open, close, and save cut files. Its **Save As** feature allows easy renaming of files. **Exit** closes Easicut and returns you to the desktop.

2. **Plot**- this button sends the file currently open to the plotter. You may open another file for viewing without changing the plotted file. Likewise, closing a file does not remove it from the plotter. To determine which file is currently plotted, look at the **Control Panel** or the **Plotter Status** in the lower part of the main screen.

3. The **Project** menu is similar to the **File** button except that it works with groups of files called projects. The user specifies projects with the **Project Manager**. Typical projects

might include files, which are frequently used together, or files cut with the same material.

4. The **Options** menu features screens for general machine settings, specific project settings, and settings for different materials. There is also a utility to select file extensions for file types.

5. **Save**- saves parameter changes made on the Control Panel.

6. **Complete Marker**- displays the entire file currently open.

7. **Table Bite**- If the entire file will not fit on your cutting table, Table Bite displays it in sections.

8. Marker window.

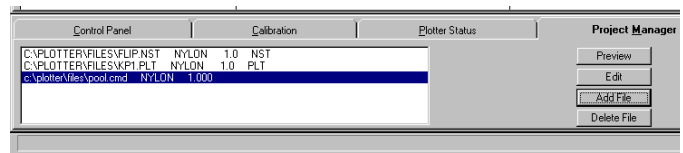
9. **Control Panel**- Displays speed, acceleration, and tool settings. May be used to edit these settings with the **Save** button.

10. The **Calibration** screen features a drop-down menu to select tools and run calibration patterns. Tool calibration is described in depth in Chapter 4, Plotter Maintenance.

11. **Plotter Status** - shows which file is currently plotted. It also shows which panel is being cut when the machine is running.

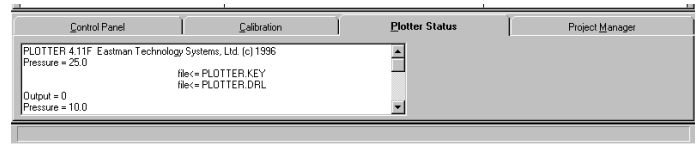
12. The **Project Manager** screen contains all project editing features. Add, delete, and select files for projects.

13. The Repeat File feature repeats the label pattern continuously on the table



The **Project Manager** tab.

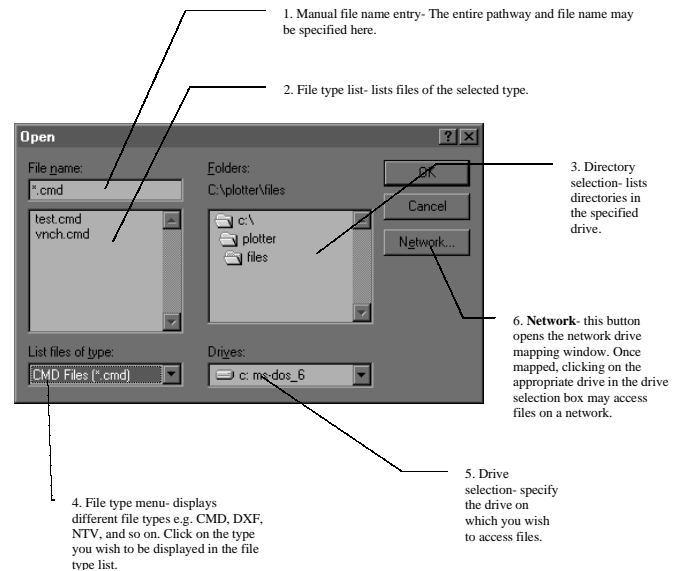
The Project Manager is used to edit projects. Files may be added to or deleted from a project. Preview will display the selected file in the marker window. The Edit button features a file name editor, a material type selection, and comments.



The **Plotter Status** tab.

The Plotter Status tab is essentially a more detailed read-out of the display on the User Interface Terminal. Continually updated information such as machine position, air pressure, current cut file, and so on is found here. If the machine should crash or develop any fault while running, error messages will be displayed here.

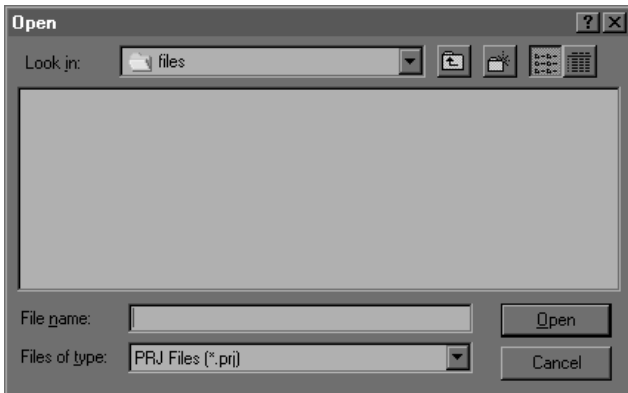
## File Open Menu



The **File menu Open** screen.



The **Open Project** screen. This screen works the same way as the **Open File** screen, but with entire projects instead of individual files. As with the **Open File** window, projects will be displayed according to the selected type.

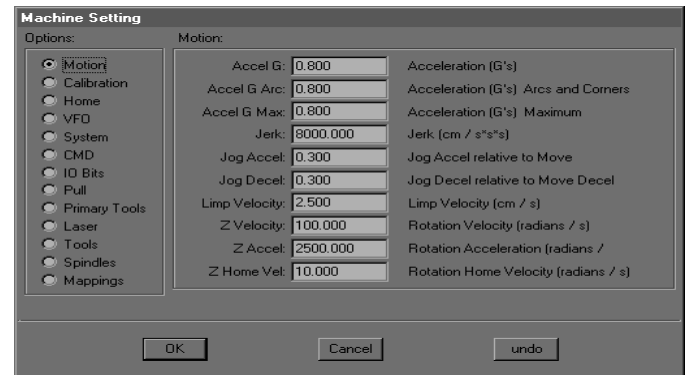


The **New Project** window. Specify a new project file name and pathway with this screen. Project file names may typically have a **.prj** suffix but you may use another type if you wish.

Note: For more information on the uses of the Project feature, see the description of the **Project Setting** window at the end of this chapter.

## Machine Settings

This section is used to calibrate the fine tuning of your machine.



The **Machine Setting Motion** screen from the **Options** menu.

There are 12 **Machine Setting** screens to select from. The **Motion** screen shown here covers the following settings:

**Accel G:** This is the base acceleration and deceleration number, controlling how fast the plotter gets up to full speed and how fast it comes to a stop. Larger numbers increase acceleration and deceleration.

**Accel G Arc:** This number controls how fast the plotter goes around corners. If the plotter crashes while making a turn, this number must be decreased. Conversely, throughput may be slowed if Accel G Arc is set too low.

**Accel G Max:** Controls acceleration on short movements where the plotter won't be reaching its maximum velocity. These movements may be made a higher than normal acceleration. Generally speaking, this number can be about 50% greater than Accel G. however, should the plotter crash or shake on short moves, reduce this number. Accel G Max controls motion for the Abort and Limit switches.

**Jerk:** Jerk is defined as the change in acceleration. Normally, the plotter accelerates and decelerates at a constant rate. When Jerk is used, the plotter begins moving at a lower acceleration rate, increasing acceleration until reaching the level set in Accel G (or Accel G Max, whichever is appropriate to the movement being made). Then the plotter's acceleration decreases as it approaches its maximum velocity. This results in smoother motion, particularly if the cut path is intricate. Jerk is typically set somewhere between 100 and 1000, depending on the application. The smaller the number, the smoother the motion. Setting Jerk to zero disables the feature.

**Jog Accel:** Controls acceleration of the plotter while manually jogging it with the joystick or the arrows on the keypad. This setting is a multiplier of the acceleration value in Accel G. For example, if Accel G is .4 and Jog Accel is .8, the jog acceleration will be .4 times .8, or .32.

**Jog Decel:** Similar to Jog Accel but controls motion of the plotter after the joystick or keypad arrow is released.

**Limp Velocity:** This is the maximum velocity of the machine while in limp mode. Limp mode is toggled on and off by the Jog key on the keypad.

**Z Velocity:** Maximum rotational velocity for the cutting (marking, notching, etc.) devices. Radians per second.

**Z Accel:** Rotational acceleration for cutting devices. Expressed in radians/sec/sec.

**Z Home Vel:** Sets the rotational velocity for the machine's table home, table zero, and panel zero functions. This number is normally much lower than the Z Velocity. Expressed in radians per second.

**Y Calibration:** Operates the same way as the X calibration.

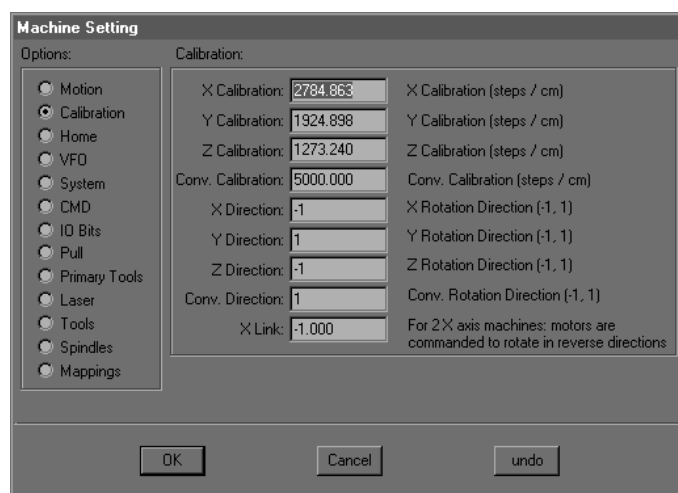
**Z Calibration:** Operates in the Z axis and is specified in radians.

**X Direction:** Determines the rotational direction of the X motor. This may only be set to -1 or 1. This is preset at the factory and should not be changed.

**Y Direction:** Operates the same way as the X Direction. Preset at the factory and should not be changed.

**Z Direction:** Operates the same way as the other axis direction settings. Should not be changed.

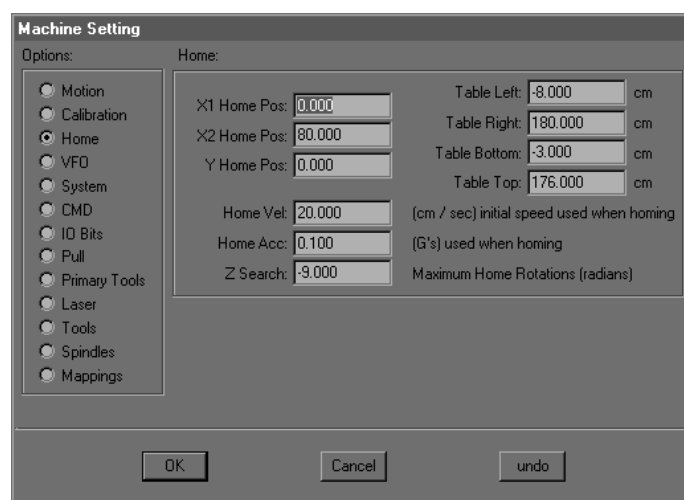
**X Link:** This setting is for dual X-motor machines. When two motors are used to drive the machine on the X axis (for instance, in most M9000 machines), they must be commanded to rotate in opposite directions. Under no circumstances should this setting be changed.



The Machine Setting Calibration screen displays a list of options on the left, with 'Calibration' selected. The main area contains fields for X, Y, and Z Calibration (steps/cm), Conversion Calibration (steps/cm), and Direction (X, Y, Z, Conv.) settings. The X Link field is set to -1.000, with a note: 'For 2X axis machines; motors are commanded to rotate in reverse directions'. Buttons for OK, Cancel, and undo are at the bottom.

The **Machine Setting Calibration** screen.

**X Calibration:** Controls the accuracy of the plotter in the X axis. Expressed in steps per centimeter, this variable will be preset from the factory and should not need adjustment. A greater number will cause the computer to output more steps to travel one centimeter, causing inaccuracy in the length of cut panels. The correct number for this calibration may be determined from the machine's gear ratios or by measuring the distance the machine travels compared to the distance it was commanded to travel in a file or by jogging.



The Machine Setting Home screen displays a list of options on the left, with 'Home' selected. The main area contains fields for X1 Home Pos, X2 Home Pos, Y Home Pos, Home Vel, Home Acc, Z Search, Table Left, Table Right, Table Bottom, and Table Top. Units are specified for each field. Buttons for OK, Cancel, and undo are at the bottom.

The **Machine Setting Home** screen.

**X1 Home Pos:** Specifies an offset in cm. from the X1 home switch. X1 Home Pos is used only on twin motor X drive machines such as the M9000. In conjunction with X2 Home Pos, it is used to square the machine to the table. The machine's position resulting from the homing sequence with these numbers is regarded as the table's X-axis origin (0.0)

**X2 Home Pos:** X2 Home is used on all machines, and is the only home reference for single motor X drive machines (M9200 with torque tube). Like X1 Home Pos, X2 is an offset in cm. from the X axis home switch. Set this number to where you want your table origin to be.

**Y Home Pos:** Works the same way as the X Home offsets, but for the Y-axis. You may wish to adjust Y Home Pos for different material widths or wear on the table surface.

**Home Vel:** Maximum speed of the machine during the homing sequence. This should always be a relatively slow speed.

**Home Acc:** Acceleration in G's used for the homing sequence.

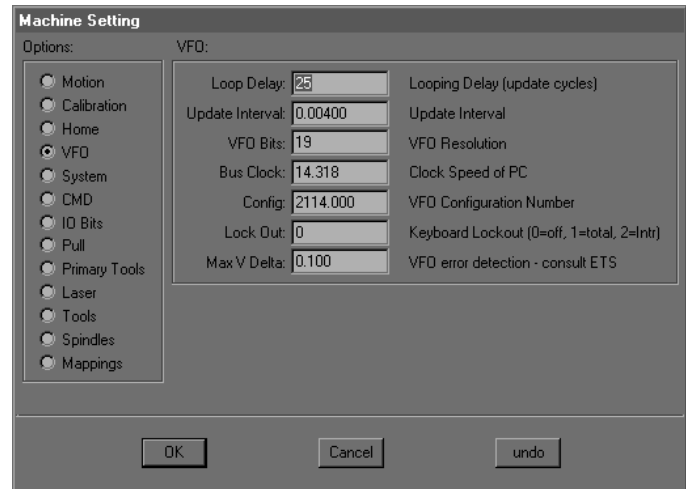
**Z Search:** Maximum number of radians allowed to search for the Z Home sensor. (9 radians is approximately one and a half rotations.) This number may be negative or positive, depending which direction you want the motor to spin during its search. Note: If for any reason you change the search direction, the Z offset must be recalibrated for each tool in the Machine Setting Spindles window.

**Table Left:** Limits the travel of the machine to your left as you face the operator keypad. If your system includes an EasiPull gripper, the Table Left limit must allow for travel beyond the home switches. This means that your Table Left limit will be a negative number. Take care that the Table Left number allows sufficient travel for the gripper to reach the material, but also stops travel before the machine's X axis limit switch is clicked. Specified in cm. Jogging the machine with the joystick is a good way to determine the correct number.

**Table Right:** Operates the same way as the Table Left setting, but down the table to the right. This number should be set to allow the furthest travel down the table without activating the machine's X-axis limit switch. Also specified in cm.

**Table Bottom:** Limits the travel of the Y car towards the operator side of the table. Again, this must be set so that the machine does not click its Y axis limit switch.

**Table Top:** Works on the far side of the table for the Y-axis. Set Table Top to stop the machine's travel before it clicks its limit switch. Jog the machine to help find the appropriate setting.



The **Machine Setting VFO** screen.

**Loop Delay:** Adjusts the amount of noise filtering applied to the keypad. This is necessary as electrical noise can create signals to the computer, causing the machine to crash or move by itself. To prevent this problem, the Loop Delay specifies how many samples to average together to determine if a keypad command has been given. If the Loop Delay is set too low, electrical noise may cause false input from the keypad to be read by the computer. If set too high, the plotter will take longer to respond to the operator's keypad commands. This variable is set at the factory. Do not under any circumstance change it without consulting Eastman Technology Systems Technical Support.

**Update Interval:** Specifies the time interval at which the computer updates the velocity command to the motors. If this interval is too short, the computer will not be able to calculate and load the next velocity, resulting in a ?VFO COUNT ERROR? message. A 33 MHz 486 computer should use an update interval of 0.002. Slower computers such as a 386 require a larger interval. If this number needs to be set to .01 or greater to prevent the error, it is likely that something else is wrong.

#### **VFO Bits:**

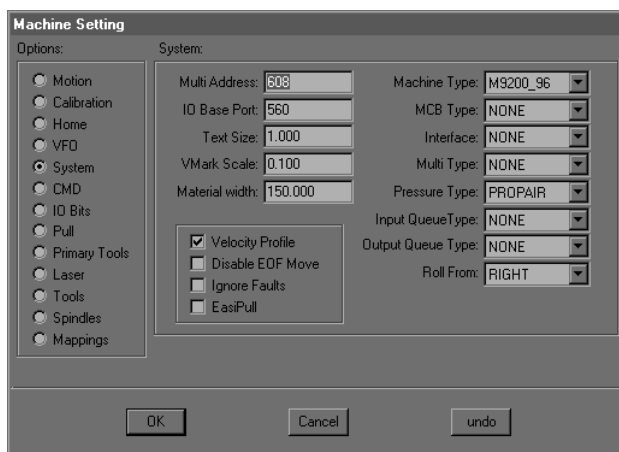
This number is used to calculate the proper factor for controlling the frequency divider on the VFO board. This is usually set to 19. Do not change the VFO bits without consulting Eastman Technology Technical Support.

**Bus Clock:** The input frequency to the VFO board is the PC bus clock. This should be set to 14.318. The computer uses this number to keep time, so changing it would cause inaccuracy in cutting velocity. Do not change this number without consulting Eastman Technology Technical Support.

**Config:** Different configuration values are used for different types of motor drives. Do not change this number without consulting Eastman Technology Technical Support.

**Lock Out:** if severe electrical noise is interfering with the operation of the keyboard, setting the lockout to 1 can disable it. Setting the lockout to 2 will turn off all interrupts while the plotter is moving. Since interrupts steal CPU time from the plotter software, an occasional VFO COUNT ERROR message can be ignored by disabling the interrupts.

**Max V Delta:** VFO error detection function. If the message AVFO CORRECTION GREATER THAN MAXIMUM@ appears, increase Max V Delta. If increasing the number to 10 does not eliminate the error, contact Eastman Technology Technical Support.



The **Machine Setting System** screen.

**Multi Address:** the address in the computer's memory occupied by the multifunction board. This address is shown as a reference only. If another peripheral device (for example, a video or sound card) is installed which uses this address, the plotter will not run.

**IO Base Port:** the address for the I/O card. Again, the I/O card must take priority. Do not attempt to change this address.

**Text Size:** refers to text specified in a design file. Setting this to 1 makes plotted characters 1 cm long by 2 cm high. Increase or decrease Text Size to make characters larger or smaller.

**SEGA Distance:** A SEGA is a command used in CMD files to specify polylines with fillets at each corner point. The radius of the fillet is determined by fitting a circle tangent to

the lines connecting the points of the polyline at the SEGA Distance from the corner point.

**VMark Scale:** a VMark is used to mark the local origin of a cut file as set by the plotter operator. It is drawn with the pen. Setting the VMark Scale to 1 makes a mark 2cm by 2cm. Reduce or increase this number to make smaller or larger VMarks.

**Machine Type:** selects software configuration for several different Eastman Technology machines. Allows Easicut to be used on obsolete machines.

**MCB Type:** selects Motion Control Board Type. VFO boards are typically used on machines with stepper motors such as the older M90 machines. Servo motor machines (M9000-95 and on) use MEI boards. Select None if you wish to run Easicut on a computer, which is not set up as a machine control computer (i.e. has no motion control board).

**Interface:** selects the type of user interface. Choose Keypad if your machine uses a 16 key interface, commonly used on older M90 machines. Select UIT if the machine has a User Interface Terminal. Click None if you are running Easicut on a computer, which is not connected, to a machine.

**Multi Type:** selects the version of multifunction board. Revisions after Rev. 1 are labeled as such on the board itself.

**Pressure Type:** click Manual if your machine has a manually operated air pressure regulator. Click Propair if it uses the computer controlled Proportion Air device.

**Velocity Profile:** has the effect of turning Accel G Arc on or off. This is normally used for testing only, and should be left clicked on for any production application.

**Enable DTR:** refers to Data Terminal Ready circuitry, used on only a very few Eastman Technology machines. Unless your machine is one of those which use DTR, this should not be enabled. If incorrectly selected, the user interface terminal will not function.

**Disable EOF Move:** files generated with Eastman Technology Pool software contain SKIP commands at the end, which automatically return the plotter to the global origin. Clicking Disable EOF Move may ignore these commands.

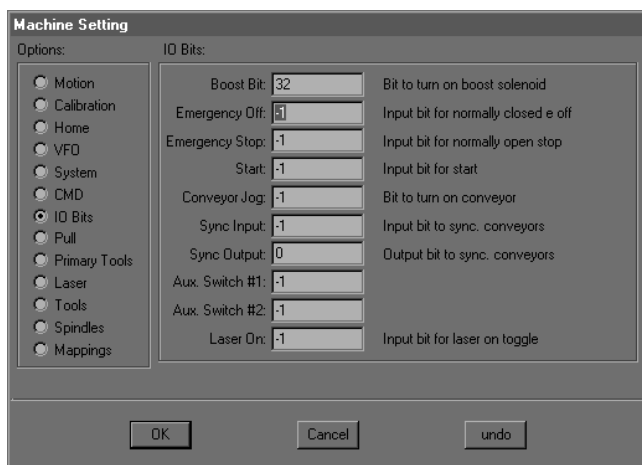
**Ignore Faults:** to be used only on a stepper motor machine in conjunction with an MEI board.



## ⚠ CAUTION

DO NOT UNDER ANY CIRCUMSTANCES CLICK IGNORE FAULTS ON A STANDARD PRODUCTION M9000 OR M9200 MACHINE. THIS COMMAND ALLOWS THE MACHINE TO OPERATE AFTER AN AMP FAULT OR AMP FAULT MESSAGE OCCURS. THIS SITUATION CAN CAUSE SERIOUS AND EXPENSIVE DAMAGE TO THE MACHINE AND WILL VOID THE WARRANTY.

**Roll From:** selects the direction from which Table Bites on the marker window are displayed.

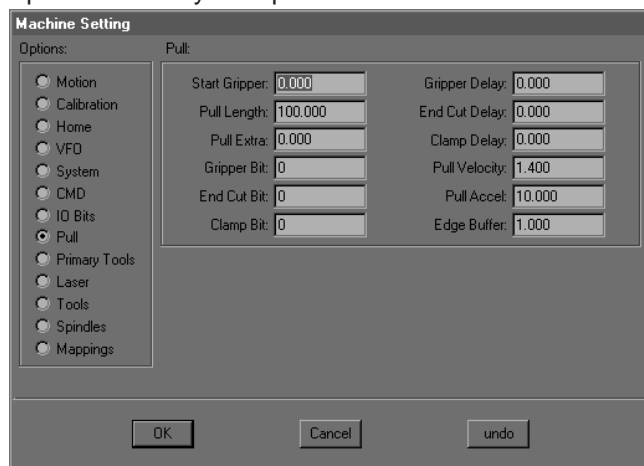


### The Machine Setting I/O Bits screen.

The I/O bit settings are preset at the factory and should not be changed. Altering the bit settings will cause improper functioning of the machine.

## ⚠ WARNING

If the I/O bit settings are tampered with, the emergency stop switches may not operate.



The **Machine Setting Pull** screen.

**Start Gripper:** Sets the distance from Table Home (X=0.00) the machine will move to start the gripper. This number will be negative in order to move the machine backward from Table Home.

**Pull Length:** Default pull length used if no cut file is loaded. Note: if a cut file is loaded, Easicut will automatically calculate how much material to pull based on the table length (Table Right in the Machine Setting Home screen) and the length of the patterns in the cut file.

**Pull Extra:** Accommodates the distance from the end cutter to Table Home. After the material is cut, the machine will pull the material this specified distance.

**Gripper Bit:** Address used for the gripper in the computer's memory. Do not change this number.

**End Cut Bit:** End cutter address. Do not change it.

**Clamp Bit:** Memory address used for the clamp. Don't change this number.

**Gripper Delay:** Time in seconds the machine allows for the material to be gripped before starting to pull.

**End Cut Delay:** Time in seconds allowed for the end cutter to cut the material, after which the machine pulls the Pull Extra length.

**Clamp Delay:** Time allowed for the clamp to actuate before starting the knife.

**Pull Velocity:** Maximum speed of the machine while pulling.

**Pull Accel:** Acceleration of the machine while pulling. Specified in cm/sec/sec, this acceleration rate should be relatively slow.

**Edge Buffer:** Adds this specified length to the ends of the pulled material beyond the edges of the cut file. This feature is helpful to control material movement on the edges.

## Label Setting

*(Screen Not Shown)*

The **Machine Setting Label** screen.

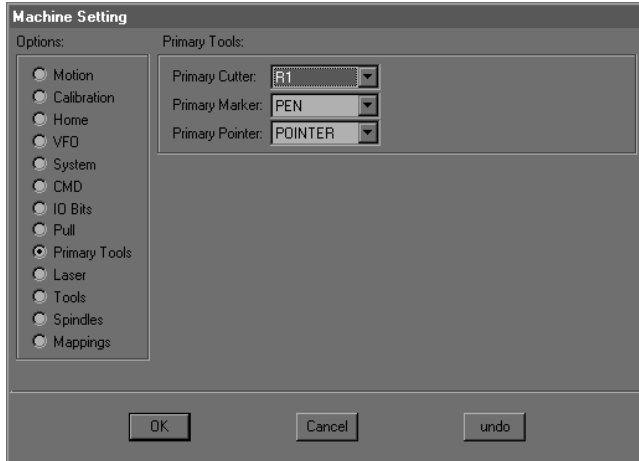
**X-Offset:** Sets offset in X direction between laser pointer and center of label.

**Y-Offset:** Sets offset in Y direction between laser pointer and center of label.

**Velocity:** Sets velocity of label head movement when applying label.

**Acceleration:** Sets acceleration of label head movement when applying label.

**Label Type:** Choose label size.

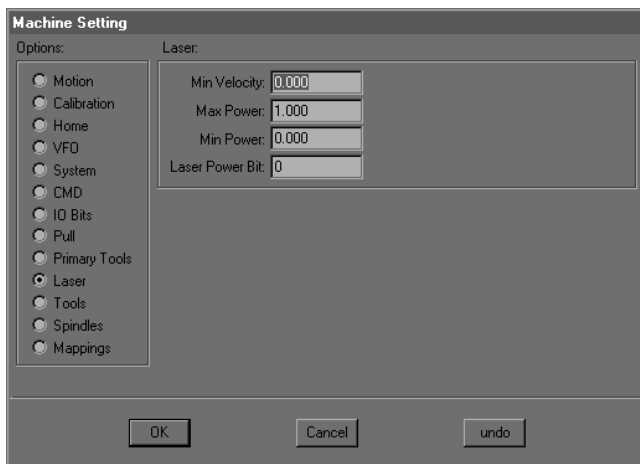


The **Machine Options Primary Tools** screen.

**Primary Cutter:** Specifies the Primary Cutter. This feature is necessary in order to access the Options Mode from the user interface terminal on each cutting tool. Since Options Mode commands reference the Primary Cutter, click the appropriate tool in the drop-down menu that you wish to use. Tools may be added to the list through the Machine Setting Tools window.

**Primary Marker:** If your machine has more than one marking device, you may specify one as the Primary Marker.

**Primary Pointer:** Operates the same way as the Primary Marker.



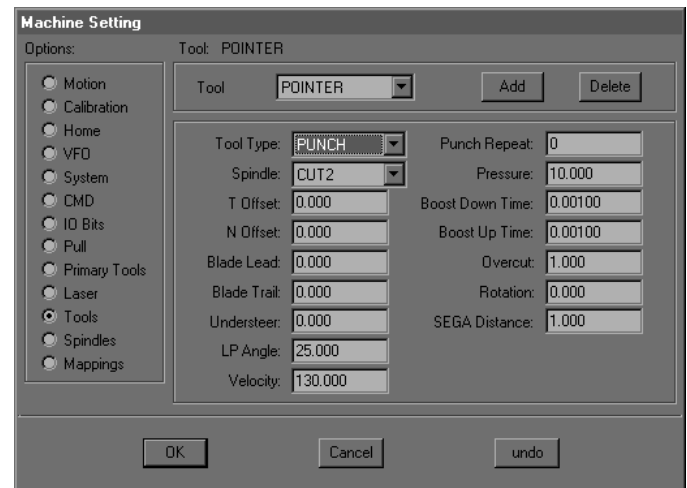
The **Machine Setting Laser** screen.

**Min Velocity:** Minimum velocity in cm/sec at which the laser will fire. This reduces kerf at the beginning and end of cuts.

**Max Power:** Sets the maximum power of the laser. You may wish to adjust this for cutting different types of materials. Expressed as a percentage from 0 to 1.0.

**Min Power:** The software incorporates a laser power ramping system which adjusts the power in relation to the machine's speed. Min Power sets the minimum power which will be used to fire the laser. A typical laser will not fire below 20% of its maximum power.

**Laser Power:** Laser on/off bit.



The **Machine Setting Tools** screen.

**Tool:** Select the tool whose parameters you wish to change by clicking on it in the Tool drop-down menu. Tools may be added or deleted by clicking the appropriate tab.

**T Offset:** Sets the tangent offset for the selected cutting tool. Tangent offset is the distance between the actual cut line of a tool and the center of the spindle it is mounted to. Most tool types, properly mounted, will not require tangent offset adjustment. If you find it necessary to adjust T Offset, note that changes to three decimal places (.001 cm) are significant.

**N Offset:** Sets the Normal Offset. This is the offset between the cutting tool and the center of the spindle it is mounted on, perpendicular to the cut line. Most tool types, properly mounted, will not need N Offset adjustment.

Note: Blade Lead and Blade Trail should be adjusted so as to give no overcut. Cutting a small square (SQUARE.CMD) is very useful for this.

**Blade Lead:** Adjusts the leading edge travel of a tool at the end of a cut, thereby controlling overcut. A greater number will reduce overcut while a smaller number will increase it. Blade Lead is frequently a negative number.

**Blade Trail:** Works the same way as Blade Lead, but for the trailing edge of a tool. Controls overcut at the beginning of a cut. Larger numbers reduce trailing edge overcut.

**Understeer:** Controls the behavior of a cutting tool as it travels around curves. Understeer is specified as a blade length whose endpoints are steered around curves. Varying Understeer opens or closes the trailing end of the blade to make more accurate cuts around curves.

A good test to see the effect of Understeer is to cut a 10 or 15 cm diameter circle at a cutting speed of 5 cm/sec. As the tool finishes each quarter (90 degrees) of the circle, press ABORT on the keypad, causing the tool to lift. Press NEXT to drop the tool back down and continue the circle. Examine the lift and plunge points created on the circle. If the trailing edge of the blade falls outside the circle, increase Understeer. Conversely, if the trailing edge of the blade falls inside the circle, reduce Understeer.

**LP Angle:** The Lift/ Plunge Angle sets the angle at which a tool will be lifted, turned, and plunged to continue a cut rather than being turned while on the table. This setting is necessary in order to minimize table wear while maintaining throughput. In other words, the machine takes longer to perform a tool lift/ plunge than to simply steer around a tight arc. However, a tool going around a tight arc (particularly a round knife) will tend to scrape the table surface. LP Angle for a round knife should typically be between 25 and 35 degrees. Drag knives, being far less damaging to the table while going around an arc, may be set around 170.

**Velocity:** Specifies the maximum velocity of the selected tool in cm/sec.

**Overcut:** If overcut is desired, specify it here. Overcut will add the indicated amount to the beginning and end for each cut of the selected tool.

**On Bit:** Command bit for a switchable tool such as a cold wheel cutter or an ultrasonic knife.

**On Time:** Wait time to start a switchable tool after it is plunged to the table.

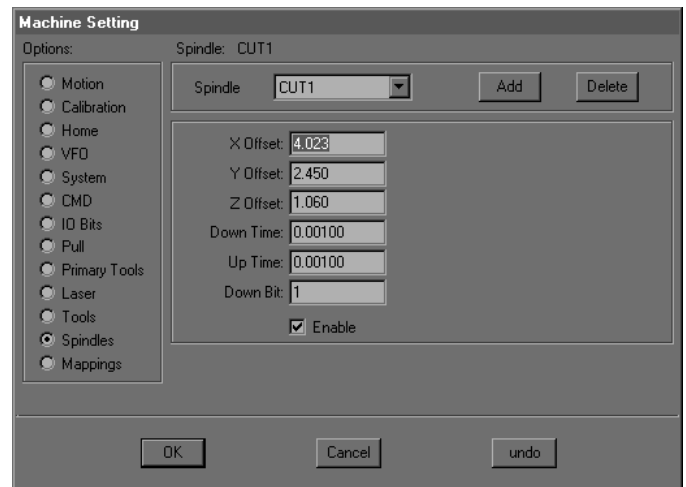
**Off Time:** Wait time for machine motion after lifting a switchable tool.

**Pressure:** Pressure in psi applied to the tool while in use. The pressure should be set as low as possible to minimize table surface wear. However, the pressure must be sufficient to ensure complete cutting of the material.

**Boost Down/ Boost Up Time:** In order to speed up and down tool motion, a short burst of high pressure is applied as the tool is lifted and plunged.

**Spindle:** Specifies which spindle the selected tool is mounted on. Spindle 1 is nearest the laser pointer, 2 is nearest the penlift, and 3 is behind the Z motor.

**Tool Type:** Select cut tool, pen tool, punch tool, or no tool.



The **Machine Setting Spindles** screen.

Note: For detailed instructions on adjusting spindle offsets, see the section on plotter calibration.

**Spindle:** Refers to the spindles, which the tools are mounted on. On a single tool machine, select Spindle 1 (CUT1). On a Multi-Tool machine, Spindle 1 is nearest the laser pointer. Spindle 2 is nearest the pen holder, and Spindle 3 is directly behind the Z axis motor.

**X Offset:** Spindle offsets relate to a common point, usually referring to the laser pointer. These offsets are necessary due to the spindles' physical distance from each other. X Offset is a measure of the selected tool's distance from the laser point in the X-axis.

**Y Offset:** A measure of the selected tool's distance from the laser point in the Y-axis.

**Z Offset:** The Z Offset specifies how far the selected tool will move from the Z sensor during the Table Zero or Panel Zero functions. Z Offset is used to center a tool's rotational direction.

**Down Time:** Specifies a wait time after the selected tool drops to the cutting table. The machine will pause this time before moving.

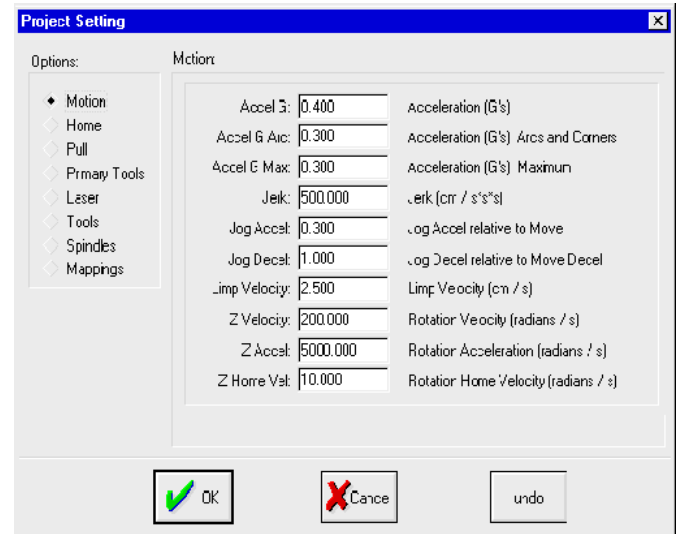
**Up Time:** Wait time after the tool has lifted for the machine to move.

**Down Bit:** Command bit to drop the tool.

**Enable:** Turns the selected tool on or off. You may wish to use this feature if, for example, you want to make only pen markings on material.

Different file formats have different layer names, all of which need to be mapped to tools, so users who work with several file formats may require a lengthy mapping menu.

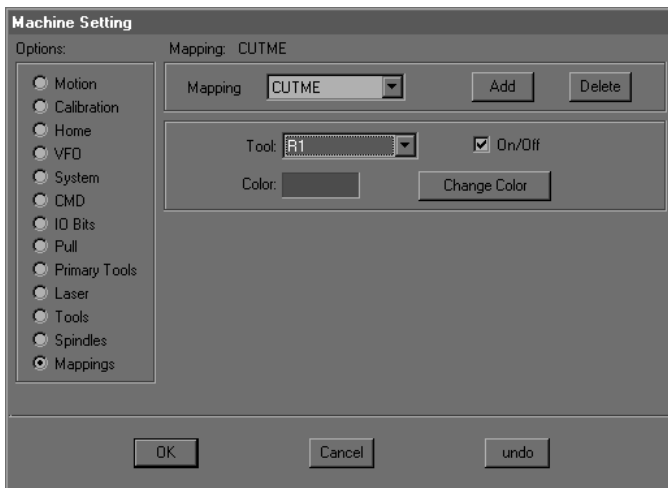
The On/Off button may be used to ignore mapped layers if desired. Each layer in the Mapping menu may be turned on or off when selected. Note that only a layer may be turned off. If a tool is mapped to two different layers, turning off one layer will not prevent the tool from being used on the other one.



The **Options** menu **Project Setting** screen.

This screen is accessed only after opening a project in the **Project** drop-down menu. **Project Setting** allows you to override machine setting parameters in order to handle, for example, the different requirements of different materials. Certain materials may need more overcut, air pressure, etc. to achieve efficient, accurate cutting. Changes made to these machine settings will be applied only to the selected project. Each project, therefore, may have its own unique parameters.

The project feature may be useful in other ways as well. You can create a project to group together files, which are frequently used together, or for any reason you wish. When a project is created, its initial parameters are copied directly from **Machine Settings**, so you don't have to go through and enter all the settings.



The **Machine Setting Mappings** screen.

The Mappings screen is used to map layers in cut files to appropriate tools. For example, in a CMD file, lines to be drawn are labeled PENME. As shown above, PENME has been mapped to the PENN. CUTME, again a CMD format layer name, indicates lines which are to be cut. Therefore, CUTME should be mapped to a cutting tool such as R1 (1" round knife) or DRG1 (drag knife).

## GLOSSARY

### CMD File

A CMD file is a drawing file format proprietary to Eastman Technology Systems, Ltd. All files loaded are first converted to a CMD file format.

### Dialogs Area

The dialogs area of the EasiCut main application window refers to an area at the bottom or the left edge of the window that is allocated for display of the Layers, Tools and/or Status dialog boxes. The location of the dialogs area may be set using the Dock Left and Dock Bottom options. The dialogs area may be re-sized by moving the splitter bar that separates it from the drawing area. The dialogs area can never be deleted.

### Drawing Area

The drawing area refers to that part of the EasiCut main application window not occupied by the dialogs area, tool bar, status bar or menu bar. All drawing files are opened in windows that appear within the drawing area. If drawing windows are maximized, the entire drawing area is filled with a single drawing file. Otherwise, one or more drawing file windows may be visible within the drawing area.

### Drawing File

A drawing file is a file containing a description of a geometric pattern that corresponds to the cutting, punching, drawing, Labeling, etc. functions to be performed by the cutting machine. Drawing files are generally created by a separate CAD application. EasiCut 1.06y supports the cutting of CMD, DXF, HPGL, GCODE, NST, and NTV drawing files.

### Hardware Key

A hardware key is a programmable device containing a code that must be read by the EasiCut 1.06y application before it will initiate normal operations. Without the hardware key, the EasiCut 1.06y application will not load files into the cutting machine nor will it save modified or converted drawing files to disk. The hardware key attaches to the LPT1 printer port of the system computer.

### Job File

A job file consists of a list of drawing files, their associated material types and a set of file processing and system configuration parameters that are shared by all the drawing files. Job files are used to group drawing files that share a common processing environment. Job files are identified by a JOB file name extension. The default job file is EasiCut.JOB. Other job files may be created and accessed using the Job Menu. The contents of a job file are modified using the Job Options dialog box.

### Layer

A layer is used in a drawing file to define a set of features or characteristics that may be shared by more than one drawing entity. When an entity is added to a drawing file and placed on a specific layer, the entity inherits the characteristics defined for that layer. The layers are initially defined in the CAD application used to create the drawing file. Within the CAD application a layer specifies graphics characteristics such as line style and line color.

### Layout Mode

In the layout mode, the currently active drawing file window is opened for viewing and editing the drawing. When a drawing file is opened, it is always opened in layout mode window. A layout mode window may be transformed into a simulate mode window by selecting the Simulate Mode option. A layout mode drawing file may be copied to the cutting mode window by selecting the Cut option. Any number of drawing files may be opened in layout mode windows. The layout mode refers only to the EasiCut application and not to the machine itself. The cutting machine can cut a file regardless of the EasiCut application mode.

### MACHINE.INI File

The MACHINE.INI file is a text file that contains system configuration and calibration settings as well as definitions for all available tools. The Machine Options dialog box and the Calibration Options dialog box are used to view and modify the contents of the MACHINE.INI file. The MACHINE.INI file should never be edited directly using a text editor.

### Mapping

A mapping refers to the association of a drawing layer with a particular machine tool. When a layer is mapped to a tool it means that all drawing entities on that layer will be cut/labeled by that tool. The tool settings associated with the mapped layer will override the default settings included in the tool definition. A layer may be mapped to a tool graphically using mouse drag-and-drop actions in the Layers and Tools dialog box. A layer may also be mapped to a tool in the Layers tab of the Job Options dialog box. All layer mappings are specified for the current job only.

### MATERIAL.INI File

The MATERIAL.INI file is a text file that contains definitions for all available material types and the layer mappings associated with each material. The Material Options dialog box is used to view and modify the contents of the MATERIAL.INI file. The MATERIAL.INI file should never be edited directly using a text editor.

---

### Motion Control Software

EasiCut communicates with the cutting machine through separate motion control software which resides in a program named PLOTTERW. EasiCut controls the cutting machine by sending messages to the PLOTTERW program which in turn executes the control commands. Similarly, EasiCut is informed of the current machine status through messages received from PLOTTERW. The process of loading a file into the cutting machine actually consists of several steps. EasiCut converts the drawing file to a CMD file and sends the name of the CMD file to the PLOTTERW program. The PLOTTERW program reads the CMD file, converts the contents of the file to cutting machine control commands and then executes those commands.

### Mount

See Tool Mount.

### Plotterw

See Motion Control Software.

### Simulate Mode

The simulate mode is active any time the currently active drawing file window is opened for cutting simulation. A drawing file must first be opened in the layout mode before it can be changed to the simulate mode. A simulate mode drawing window may be transformed back into a layout mode drawing window by selecting the Layout Mode option. A simulate mode drawing file may not be placed in the cutting mode window. Any number of drawing files may be opened in the simulate mode windows. The simulate mode refers only to the EasiCut application and not to the machine itself. The cutting machine can cut a file regardless of the EasiCut application mode.

### Supervisor

The supervisor user is the EasiCut 1.06y security system manager or system administrator. This user has the highest available privilege level and is the only user authorized to access the Calibration and the User Management options. There is one and only one supervisor user in the authorized user list. If the security system is disabled, the supervisor user is not recognized.

### Table Bite

If the pattern in a drawing file is longer than the available length of the cutting table, the drawing is divided into two or more table bites. Each such bite is processed as an individual pattern and table bites are processed sequentially from the beginning of the drawing file to the end.

### Tool

A tool refers to a physical cutting, punching or marking implement which may be attached to a tool mount of the cutting machine.

### User Interface Terminal

The User Interface Terminal (UIT) is the operator control console for the labeling machine. It is located at the front of the machine. The UIT includes a keypad, four line display and a joystick.

This image shows a full page of blank white paper with horizontal ruling lines. The lines are evenly spaced and run across the width of the page, providing a template for writing or drawing. There are no margins, text, or other markings present.

## Service Record

**Machine Serial No.:** \_\_\_\_\_ **Machine Size:**\_\_\_\_\_

**Machine Voltage:** \_\_\_\_\_ **Table Width:** \_\_\_\_\_

**Date of Purchase:** \_\_\_\_\_ **EasiCut Version:** \_\_\_\_\_

Date	Type of Service Performed
------	---------------------------

## TECHNICAL DATA

### EASTMAN® EasiLabel Labeling System

#### EasiLabel Labeler

Maximum Labeling Speed*	15 Labels/Minute
Maximum Labeling Ply Height	1/2" (3 mm)
Label Accuracy*	+/- 1/4" (+/- 6 mm)
Machine Weight	Approx. 200 lbs. (90 kg)
Operating Voltage	110V/220V; 50/60 cycles
	110V/220V; 50/60 HZ
Power Requirement	110V/15A
	220V/8A
Minimum Operating Pressure	25 PSI
Volume of Air Service	10 SCFM

\* Relative to the type and quality of fabric, Label Locations, Label Sizes, Conveyor Speed, etc.

Machine Size	Working Width	Conveyor Belt Width	Overall Machine Width
60" (1530 mm)	52" (1321 mm)	59" (1499 mm)	94" (2388 mm)
66" (1680 mm)	58" (1473 mm)	65" (1651 mm)	100" (2540 mm)
72" (1830 mm)	64" (1625 mm)	71" (1803 mm)	106" (2692 mm)
78" (1980 mm)	70" (1778 mm)	77" (1956 mm)	112" (2845 mm)

\* For all other sizes consult factory

**Limited Warranty.** Eastman warrants to the buyer that the equipment shall be free from defects in materials or workmanship for a period of 90 days commencing on the date of invoice. Any goods or parts claimed by the buyer to be defective must be returned to Eastman, freight charges prepaid, within the 90-day warranty period. If Eastman determines that the goods or parts are defective in materials or workmanship, Eastman's sole obligation under this warranty shall be, at Eastman's sole option, to repair or replace the defective goods or parts or to provide the buyer a credit equal to the portion of the purchase price allocable to the defective goods or parts. This warranty shall not apply if defects are caused by product misuse or neglect, if the machine has been altered or modified by the buyer, or if other than genuine Eastman belts, emery wheels, knives or parts are used in the machine. THIS WARRANTY IS THE ONLY WARRANTY APPLICABLE TO THIS PURCHASE. SELLER DISCLAIMS ALL OTHER WARRANTIES, EXPRESSOR IMPLIED, INCLUDING, BUT NOT LIMITED TO, THE IMPLIED WARRANTIES OF MERCHANTABILITY AND FITNESS FOR A PARTICULAR PURPOSE.

**Limitation of Liability.** Eastman's liability to the buyer, and the buyer's remedies from Eastman, whether in contract, negligence, tort, under any warranty or otherwise, shall be limited to the remedies provided in the foregoing Limited Warranty. In no event shall Eastman have any responsibility or liability to the buyer for (a) any special, indirect, incidental, or consequential damages, including, but not limited to, loss of use, revenue, or profit, even if Eastman has been advised of the possibility of such damages, or (b) any claim against the buyer by any third party. The price stated for the product sold is a consideration for limiting Eastman's liability.