

**EASTMAN®**

---

**THE EASTMAN®**

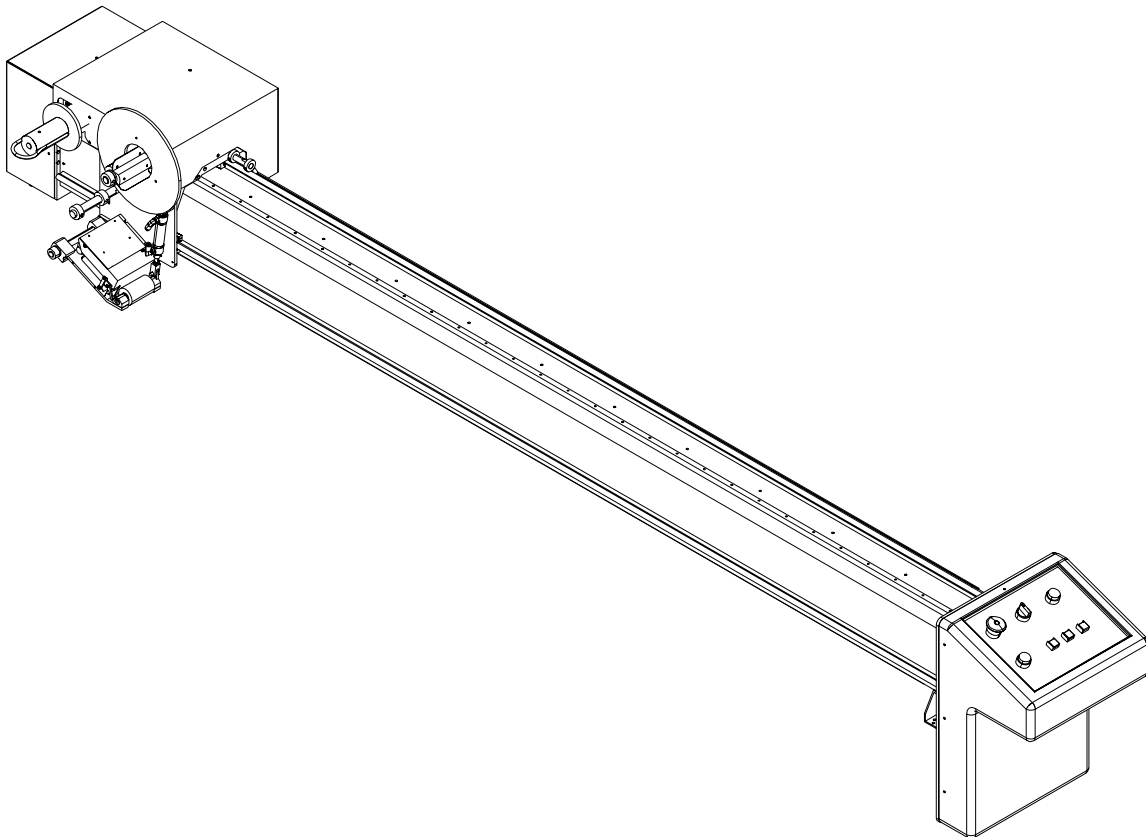
# ***Eagle EasiLabel Labeling System***

**Model: L9E000MS**

Patent Pending

## ***Service Manual***

Please read completely before attempting to operate your new ***EasiLabel Labeling System***.



**Eastman®**

*Over a Century of Cutting Expertise*

---

**779 Washington St., Buffalo, N.Y. 14203-1396 U.S.A. • (716)856-2200 • Fax (716)856-1140 or (716)856-2068**  
**Manufacturers of Eastman Cloth Cutting and Cloth Spreading Machines**

**Website: [www.EastmanCuts.com](http://www.EastmanCuts.com)**

## Table of Contents

<b>Safety Information .....</b>	<b>3</b>	Y-Car Assembly, Fiber Labeler .....	26
<b>INSTALLATION .....</b>	<b>4</b>	Labeler Head Common Parts .....	28
Conveyor Preparation .....	4	2" Labeler Head Assembly .....	30
Place Machine on Table .....	4	4" Labeler Head Assembly .....	32
Cables and Airline Installation .....	4	2" Labeler Head Assembly with Fiber Option .....	34
Machine Familiarization .....	5	4" Labeler Head Assembly with Fiber Option .....	36
EasiLabel Labeler Familiarization .....	6	Labeler Diagnostic Cabinet .....	38
Touch Screen Display Terminal (UIT) Familiarization ...	7	Wiring Diagram Blue Print No. (31-9000-13, 1 of 7) ...	41
<b>OPERATION .....</b>	<b>9</b>	Wiring Diagram Blue Print No. (31-9000-13, 2 of 7) ...	42
Zero Table (Machine Home Position) .....	9	Wiring Diagram Blue Print No. (31-9000-13, 3 of 7) ...	43
Loading New Files for Cutting/Labeling .....	9	Wiring Diagram Blue Print No. (31-9000-13, 4 of 7) ...	44
Load Material .....	9	Wiring Diagram Blue Print No. (31-9000-13, 5 of 7) ...	45
Label Threading .....	9	Wiring Diagram Blue Print No. (31-9000-13, 6 of 7) ...	46
<b>OPERATING ADJUSTMENTS .....</b>	<b>10</b>	Wiring Diagram Blue Print No. (31-9000-13, 7 of 7) ...	47
Label Tension Adjustment .....	10	Pneumatic Diagram Print No. 31-9000-28 .....	48
Label Air Pressure Adjustment .....	10	Trouble Shooting Guide .....	49
Machine Options: System Tab .....	10	<b>TECHNICAL DATA .....</b>	<b>50</b>
Machine Options: Labeler Tab .....	10		
<b>SERVICE AND MAINTENANCE .....</b>	<b>11</b>		
Recommended Spare Parts List .....	11		
<b>LABELER v1.2 LABEL PRINTING SOFTWARE .....</b>	<b>12</b>		
<b>GLOSSARY .....</b>	<b>16</b>		
Pictorial Index, Eagle Labeler .....	18		
Labeler Gantry .....	19		
Gantry Assembly .....	20		
Main Tube Assembly .....	22		
Y-Car Assembly .....	24		

## IMPORTANT

The purchaser must instruct all operators on the proper use of the equipment. All standard industrial safety measures and equipment should be provided to protect the operator. Operators must be cautioned that improper or careless use of this equipment may cause personal injury. If you do not have qualified operators to instruct new persons, contact your Eastman sales representative or Eastman factory direct.

Disconnect electrical power from source before proceeding with any installation, adjustment or repair of the EasiLabel Labeler.

Your Eastman EasiLabel Labeler Print Head is designed to travel at high speed in both directions. Equipment should be set up with a minimum 3 foot (1 meter) clear path at front and rear of machine. All personnel should be instructed to wear safety glasses and stand well clear of the EasiLabel Labeler when in operation.

---

## Safety Information

Throughout this manual, safety information is presented by the use of the terms **WARNING**, **CAUTION**, and **NOTE**. These terms have the following meanings:

### **WARNING**

A warning contains critical information regarding potential safety hazards that can occur during proper use or misuse of the machine. Failure to follow these procedures may result in serious personal injury to the user.

### **CAUTION**

A caution contains instructions for the use or maintenance of the machine. Failure to follow these procedures may result in damage to the machine. Supplementary information may be given in a Note.

### **ELECTRICAL HAZARD**

An electrical hazard calls attention to a procedure, practice, or the like, which, if not correctly performed or adhered to, could result in personal injury. Do not proceed beyond a Electrical Hazard.

## Safety and Indemnification

During the life of the machine, the purchaser agrees to provide to all machine users (including its own employees and independent contractors) all relevant safety information, including warning labels and instruction manuals. The purchaser also agrees to maintain the safety features and working condition of the machine, and to adequately train all users in the safe use and maintenance of the machine. The purchaser agrees to defend, protect, indemnify, and hold Eastman Machine Company and its subsidiaries harmless from and against all claims, losses, expenses, damages, and liabilities to the extent that they have been caused by the purchaser's failure to comply with the terms and instructions of this manual.

## General Safety Precautions

### **WARNING**

- This machine is equipped with fast moving labeler head. Keep hands, arms, and hair away from the labeling area and drive system at all times. Safety gloves, glasses, and appropriate clothing may prevent serious personal injuries.
- Disconnect the power supply to the machine when it is not in use or during routine maintenance, including cleaning and lubrication.
- The purchaser must instruct all operators in the proper use of the machine according to the instructions in this manual. This training must include instruction on the potential safety hazards arising from the use or misuse of the machine. In addition to such training, the purchaser should provide written work instructions as necessary to ensure correct use of the machine for specific cutting applications.
- Do not modify this machine or disable safety features. Unauthorized modification may result in serious personal injuries to the user. Electrical connections to this machine must be made by a qualified electrician familiar with applicable codes and regulations.
- Safety labels must be kept clean and legible at all times. Call the Eastman Machine factory to order replacement labels.

**Eastman®**

*Over a Century of Cutting Expertise*

The Eastman **EasiLabel Labeler** is shipped partially disassembled with all the necessary parts for proper setup and operation. To get the best performance, familiarize yourself with all the functions and adjustments of this equipment. Before any operation can take place, it is important that you carefully read and follow the instructions in this manual in the same sequence in which they are presented.

## INSTALLATION

### Conveyor Preparation

The Eagle Conveyor should be completely installed before the EasiLabel labeler is mounted on the conveyor. If the conveyor is not installed, install it at this time.

### Place Machine on Table

The **EasiLabel Labeler** weighs approx. 200 lbs. (90 Kg.) uncrated for a 72" machine. Wooden braces are strapped across the underside of its cross tube and the forklift arms should be raised to those braces when machine is lifted.



### CAUTION

When placing forklift arms under cross tube, use care not to damage tube or cover.

Locate the labeler mounting holes on each side of the conveyor. If the holes are not predrilled, use the diagram below to drill and tap holes as shown. Place the **EasiLabel Labeler** on the conveyor. Secure the labeler to the conveyor with mounting hardware provided.

### Cables and Airline Installation

Locate five (5) labeler wiring cables and one (1) air line. Secure the wiring cables and air line to the non-operator side of the labeler. The cable ends are labeled for proper installation.

Feed the cable and air line under the conveyor and through the yellow/black floor cable protector. Match the cable to the mating connector and secure cables in place.

1 cable to computer.

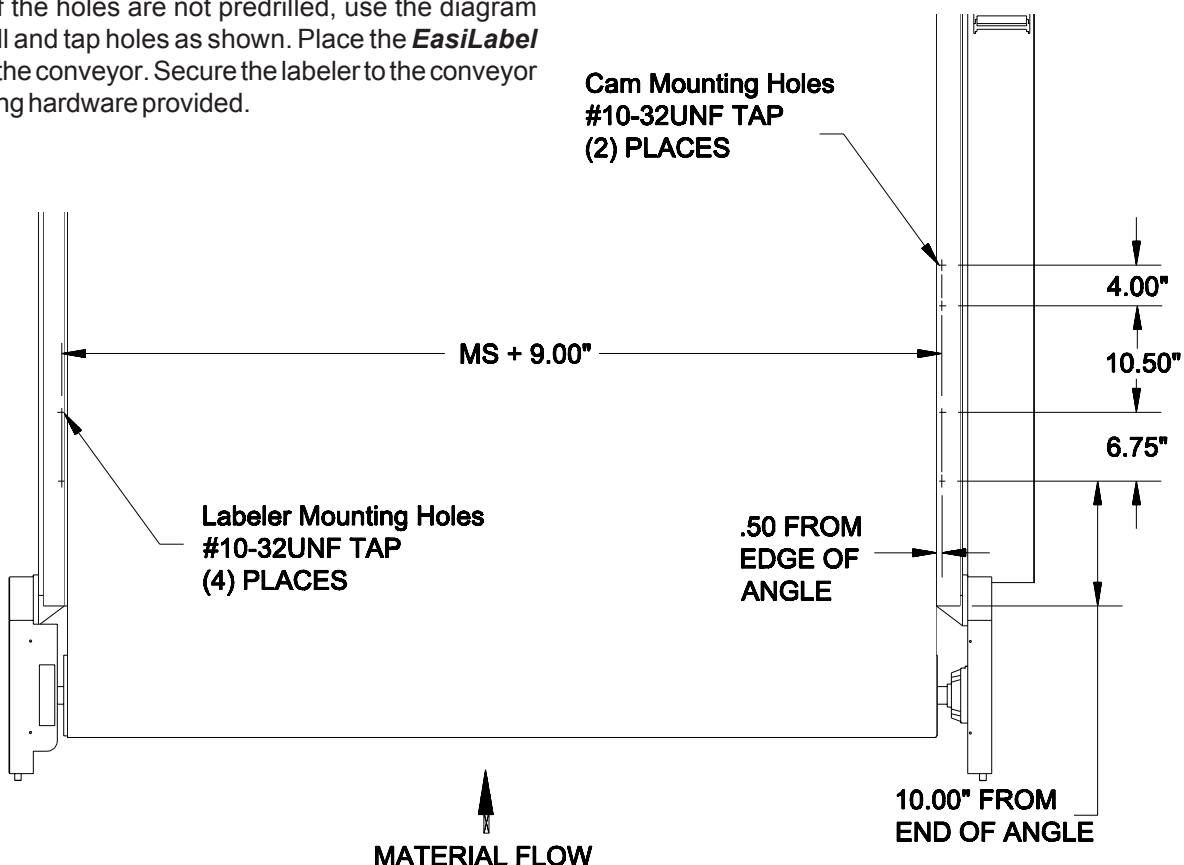
1 cable to a power supply.

3 Cables to the Diagnostic Cabinet.

**Note:** Voltage varying more than 10% (11V for 110V machine, 22V for 220V machine) may damage your system's electronics.



The EasiLabeler requires 20 - 30 PSI compressed air. Connect air line to air supply.



## Machine Familiarization

The **EasiLabel Labeler** is controlled automatically through the computer software. Manual controls are located on the labeler front control panel and used in conjunction with the controls on the cutting gantry control panel.

Computer Display: Display used for setup and run of your Gantry, conveyor and labeling system.

Computer: Stores running programs and user labeling files. Disk drive available for loading labeling files.

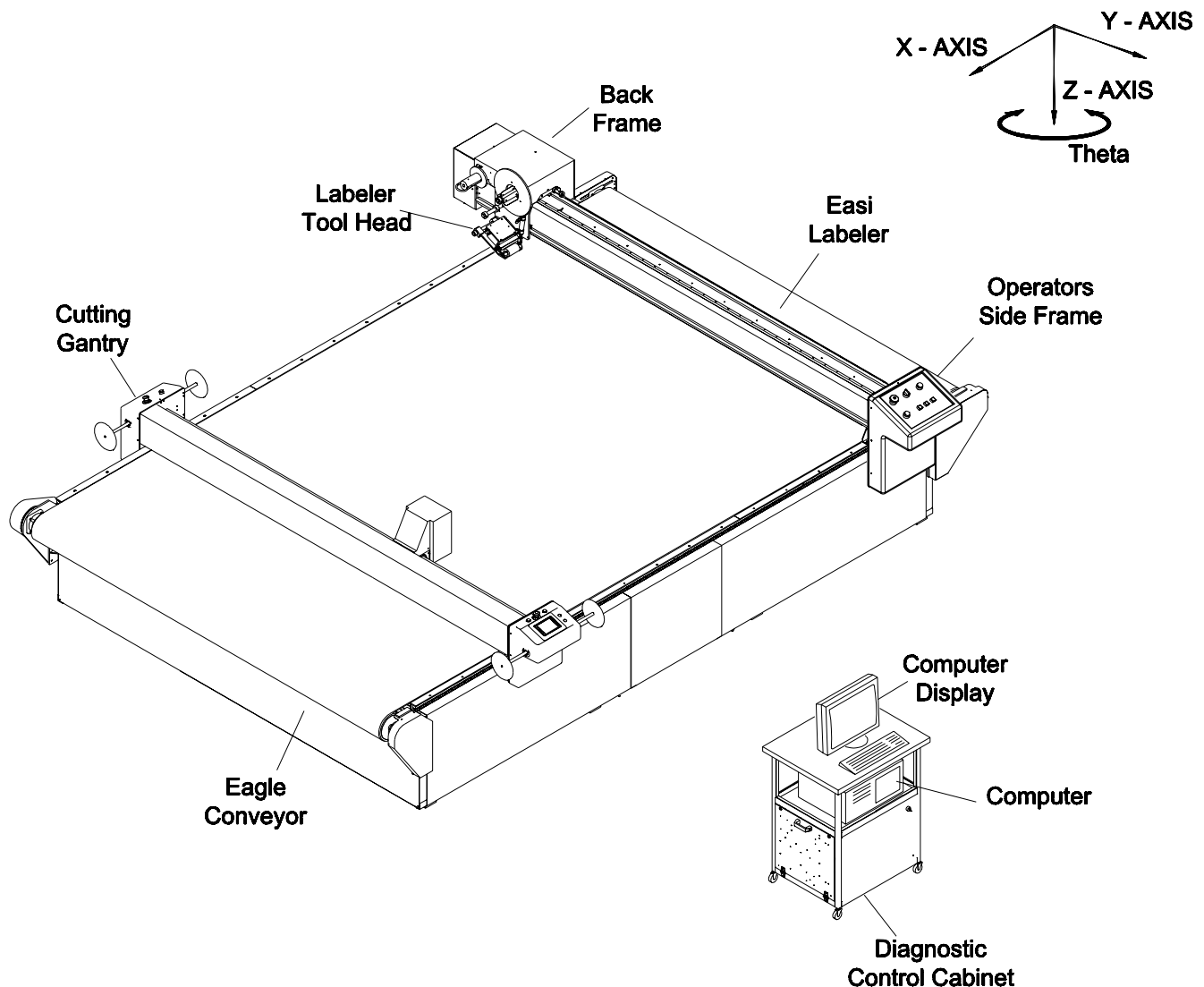
Diagnostic Control Cabinet: Electronic controls for gantry, conveyor, and Labeler.

Eagle Conveyor: Machine used to advance material. Equipped with cutting surface drive belt.

Cutting Gantry: Machine used to carry the cutting tool head and manually control the EasiLabel Labeler.

Easi Labeler: Machine used to carry the labeler tool head.

Labeler Tool Head: Tool used to apply labels to material. Available in various label sizes.



# Eastman®

Over a Century of Cutting Expertise



## **EasiLabel Labeler Familiarization**

Back Frame: Non-operator side of labeler. The air pressure regulator is located under back cover.

Labeler Tool Head: Tool used to apply labels to material.

Emergency Off: Activates power to all drive circuits. Pull on, push off.

Main Power On/OFF: Activates power labeler gantry.

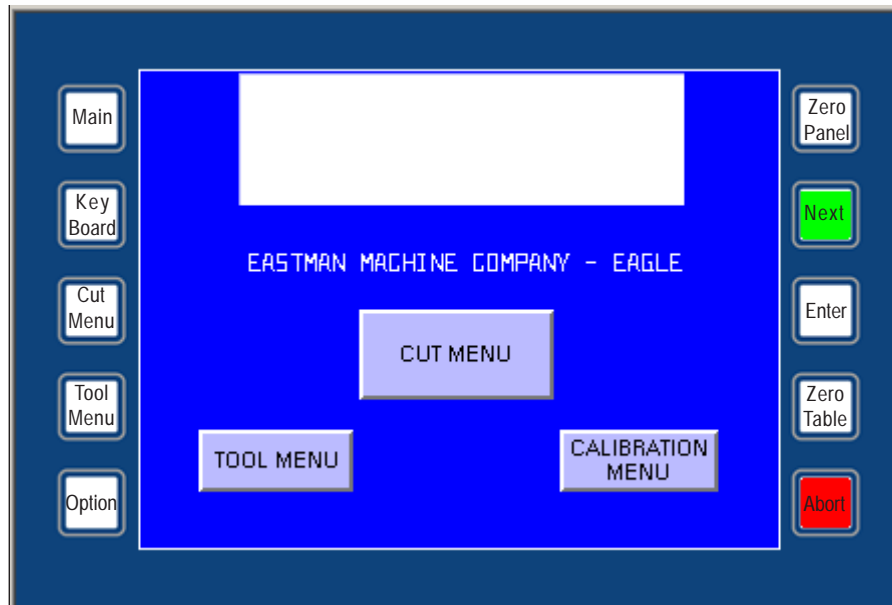
System Pause: Push to pause (stop) complete system when in automatic labeling/cutting mode. Press NEXT on UIT to resume.

Labeler Take-up: Press to activate power to label take-up spool.

Labeler Feed: Press to manually feed label.

Labeler On: Press to activate labeler tool head.

Labeler Reset: Press to Initialize printer.



Touch Screen Display Terminal (UIT)

## Touch Screen Display Terminal (UIT) Familiarization

### ***(Located on the cutting gantry)***

The Touch Screen Display Terminal features a user friendly graphic display touch screen panel with 10 hard coded buttons and many soft coded buttons. Commands are issued via the touch screen and communicated back to the computer, conveyor and labeler. Through the touch screen the operator may position the gantry tool head, move the conveyor belt, enable automated movement, and manually cut and mark.

Commands are sent to the computer by pressing buttons and graphic commands shown on the display. Following the visual instructions will allow access to the desired menu and command. A description of the command are as follows:

Zero Table: Pressing the ZERO TABLE key activates the zeroing function. The carriage will move to the home limit switches in X, Y and Z and then move the distance of the X Y and Z home offset values in the Machine Setting menu in EasiCut. This point is set as table home. The Labeler tool head will move to the home position.

Scan: Pressing SCAN allows the user to scan to a specific panel within the current cut file . Press SCAN and the UIT will prompt for a panel number . The UIT will automatically go into Alt Left mode and allow the user to select a panel number. Press ENTER to load the file.

Jog : Pressing JOG toggles the gantry manual move speed to the VELOCITY value in Machine Setting.

UP: Pressing UP causes the gantry carriage to move in the positive direction of the Y axis. The carriage will move as long as the key is pressed down ( or until the carriage encounters an end stop).

Next: Pressing NEXT causes the gantry to cut and or draw the active panel in the current cut file.

Zero Panel: Pressing the ZERO PANEL key resets the internal counters so that the local home position is set to the current gantry position. The Z-axis is rotated and reset to 0\_.

Pen: Pressing the PEN key toggles the gantry pen device to change its current state of either up or down causing the pen to drop or lift. The default pen device state is up.

Cut Down: Pressing the CUT DOWN key causes the primary cutter to drop to the cutting surface.

**Eastman®**

*Over a Century of Cutting Expertise*

Down: Pressing DOWN causes the gantry carriage to move in the negative direction of the Y-axis. See UP for more information.

Panel Home: Pressing the PANEL HOME key causes the gantry carriage to move to the current panel home position set either by the most recent panel zero or as set in the current cut file.

Table Home: Pressing the TABLE HOME key causes the gantry carriage to move to the table home position.

Rotate CCW: Pressing the ROTATE CCW key causes the Z-axis shaft to rotate counter clockwise. The shaft will rotate as long as the key is pressed down. If toggled into limp mode the shaft will rotate slowly.

Left: Pressing LEFT causes the gantry carriage to move in the negative direction of the X-axis. See UP for more information.

Abort: Pressing the ABORT key will cause the gantry carriage to come to an immediate and controlled stop. Once stopped the UIT will prompt you to either press ABORT or NEXT. Pressing ABORT will exit from the current panel or motion. Pressing NEXT will continue the current panel or motion.

Offset: Pressing the OFFSET key will cause the gantry carriage to move from its current position to the offset position of the primary cutter. This effectively moves the primary cutter into position over the reference point (usually the pen device or a laser pointer).

Rescan: Pressing the RESCAN key causes the gantry program to reset to the top of the current panel in the current cut file.

Rotate CW: Pressing the ROTATE CW key causes the Z-axis shaft to rotate clockwise. The shaft will rotate as long as the key is pressed down.

Right: Pressing RIGHT causes the gantry carriage to move in the positive direction of the X-axis. See UP for more information.

V: The V key has no function value and only works during data entry when the UIT is set to ALT RIGHT mode to allow input of alphanumeric characters.

.W: The W key has no function value and works during data entry in either ALT RIGHT or ALT LEFT mode to allow input of alphanumeric characters.

Rotate 90\_: Pressing the ROTATE 90\_ key causes the Z shaft to rotate 90\_ counter clockwise from its current position.

Y Z: The Y Z key has no function value and works during data entry in either ALT RIGHT or ALT LEFT mode to allow input of alphanumeric characters.

Back Space: Pressing the BACKSPACE key will cause the cursor to move one position to the left when in data entry mode.

Alt: Pressing the ALT key toggles the current mode of the UIT. The ALT key is only active during data entry. Pressing the ALT key will toggle the UIT between ALT RIGHT and ALT LEFT to allow the user to access all alphanumeric characters on each of the keys. A left or right arrow in the upper right of the display shows the current mode.

Enter: Pressing the Enter key causes the contents of the command line to be sent to the computer. This key is only active during data entry mode.

Main: Pressing the Main key changes the display to the top level menu as shown. Choose required menu from here.

Key Board: Pressing the Key Board key changes the display to show a touch screen key board. The touch display acts as a key board to enter required characters.

Cut Menu: Pressing the Cut Menu key changes the display to show the Cut Menu screen. This is a short cut to the cut menu.

Tool Menu: Pressing the Tool Menu key changes the display to show the Tool Menu screen. This is a short cut to the Tool menu.

Option: Pressing the Option key changes the display to show the Option Menu screen.

## OPERATION

After setup is complete and the power and airline is connected, the EasiLabel Labeler is now ready for Initialization.

### Important

To stop the cutting/labeling system at any point during operation, either:

- Press any Emergency Stop button (Red).
- Press Machine Pause button (yellow) on main control panel.

### **WARNING:** Machine Cut Zone should always be cleared before any automatic cutting/labeling takes place.

- 1) Turn ON diagnostic cabinet main power (yellow/red located on the back panel of the diagnostic cabinet). This will enable main power to diagnostic cabinet.
- 2) Power up the computer and display by pressing the ON (I) buttons. The computer display will run through the computer start-up program.
- 3) Enable power to the Gantry/Labeler by turning the ON (I) button (green), located on the front panel of the diagnostic cabinet.
- 4) Pull the Emergency Stop buttons for the cutting gantry and the labeler to activate power to the drive circuit.
- 5) Turn On labeler main power by turning the ON (I) button (black), located on the front panel of the labeler.
- 6) Press the labeler ON button (green) to the on position (in).
- 7) Press the labeler Take-up button (red) to the on position (in).

Start the EasiCut software by double clicking the EasiCut software icon on the computer display. The log in screen will appear. Enter the user name and password. Select OK when complete. This will load the default test.cmd file. The touch screen terminal display will show DESIGN LOADED.

### **Zero Table (Machine Home Position)**

Press ZERO TABLE on UIT Terminal to locate the "cutting machine home position". This will accelerate gantry to the end limit switches and back to "machine home position". The labeler print head will move to locate the "label home position".

The UIT display will show "Check Table Limits?".

Press Enter to override and continue or press KeyBoard, Y (for yes) and Enter on the keyboard to check table limits (When checking table limits the gantry with verify the active cutting area is available).

The UIT display will show "Ready" or "Table Limits OK" when task is complete.

### **Loading New Files for Cutting/Labeling**

Load a file by opening the **file** menu and clicking on the desired file. See label design software section for label design details. Select the "PLOT" icon on the computer display to load design.

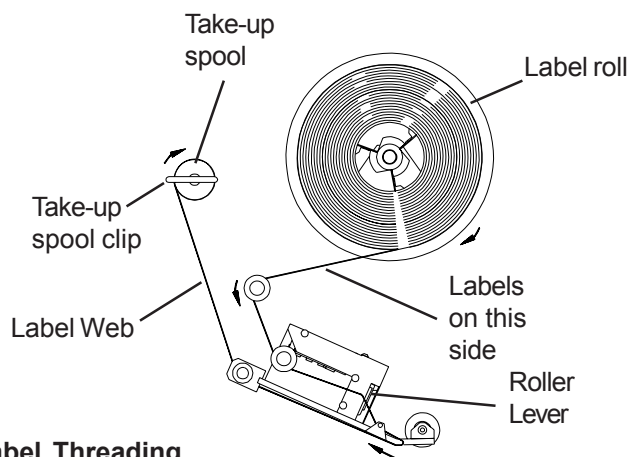
Note: Files are organized by type and are displayed on the menu according to which type is selected. For example, if you wish to use a file generated in CMD format, open the **list files of type** menu and select CMD. The **file** menu will then display all files with a CMD extension.

### **Load Material**

Load material onto conveyor and under labeler. The labeler laser pointer is the location of the first cut pattern.

Move the labeler laser pointer in/out to locate the start/cut position on the material. Press "Zero Panel" to accept.

Turn on the cutting tool switch and the conveyor vacuum. Press the "Next" button on the UIT terminal to begin cutting.



### **Label Threading**

Press Labeler ON (green) button to turn off printer. Press Labeler TAKE-UP (red) button to turn off printer take-up motor. Remove take-up spool clip. Lift the roller lever to

# Eastman®

*Over a Century of Cutting Expertise*

separate the printer rollers. Discard used label web material and label roll core. Load new label roll as shown. Release roller lever. Press Labeler ON button to continue.

## OPERATING ADJUSTMENTS

This machine is adjusted and tuned at the factory for optimal performance. No Adjustments other than normal setup are necessary. However, if after continued use the performance level becomes unacceptable, the following procedures should be carried out before repairs are considered.

### Label Tension Adjustment

The label tension adjustment is located under the labeler tool head cover. Remove the cover to access the take-up clutch. Rotate the knurled adjusting knob clockwise to increase and counterclockwise to decrease tension.

### Label Air Pressure Adjustment

The labeler pressure regulator is located on the back side frame. To adjust, remove back cover. Locate the regulator valve. Pull the "Adjust" knob up and turn clockwise to increase pressure and counter clockwise to decrease pressure. After adjustment is made, push knob down to lock in place.

### Machine Options: System Tab

The System tab is used in the initial system setup. The system settings are factory set and no further adjustments are required. The labeler functions are as follows:

**Machine Type:** Machine Type is a setting to determine the type and configuration of the system. The machine type must be EC3 Labeler when equipped with a labeler.

### Machine Options: Labeler Tab

The Labeler tab is used to setup and adjust the labeler functions as follows:

**X Offset:** X Offset is a measure of distance from the labeler laser pointer to the cutting gantry laser pointer in the X direction.

**Y Offset:** Y Offset is a measure of distance from the labeler laser pointer to the cutting gantry laser pointer in the Y direction. Adjust as required to align laser pointer.

**Print Velocity:** This is the maximum velocity of the labeler head while printing and applying a label.

**Move Velocity:** This is the maximum velocity of the labeler head while moving across the gantry.

**Acceleration:** This is the base acceleration and deceleration number, controlling how fast the Labeler head gets up to full speed and how fast it comes to a stop. Larger numbers increase acceleration and deceleration.

**Calibration:** Controls the accuracy of the Labeler head in the Y axis relative to the cutter tool head. Expressed in steps per unit, this variable will be preset from the factory and should not need adjustment. A greater number will cause the computer to output more steps to travel, causing more movement in the Y axis length. The correct number for this calibration may be determined by measuring the distance the labeler head travels compared to the distance the cutter head travels. This setting is normally the same as the cutter Y Calibration setting.

**Solenoid 1:** Bit setting for air solenoid used to apply labels. Normal bit setting in 512. This is a Supervisor User Only Setting.

**Solenoid 2:** Bit setting for air solenoid used to move down labeler head. Normal bit setting in 1024. This is for FC style labeler only. This is a Supervisor User Only Setting.

**Labeler Type:** Choose type of label. This is a Supervisor User Only Setting.

**Label Type:** Choose size of label. This is a Supervisor User Only Setting.

**Save Defaults:** Select to save setting as the labeler default settings.

**Restore Defaults:** Select to restore settings to previously saved settings.

## SERVICE AND MAINTENANCE

### Daily

- Blow off entire machine and Cable Carrier using low pressure compressed air (required twice a day depending on material).
- Check safety cams for proper location.
- Lubricate Linear Bearing with oil cloth.

### Weekly

- Check for unusual wear and determine why.

### Bi-Monthly

- Check entire machine for loose nuts and bolts.

### Monthly

- Inspect Cable Carrier, Check for loose nuts, bolts or worn parts.

### Recommended Spare Parts List

Item	Description	Qty.
54-26214-4	Roller Quick Release Pin	1
54-26031-4	Spring Clip, Label Take-up Roller	1
*****	Printer (See Printer Parts List)	1
31-26165	Printer Controller Board	1
10-26043-1	Interface Board	1
10-00904-2	Labeler "Y" Board	1
10-26044-1	Labeler Power Supply Board	1
67-26069-4	Labels 4" x 2.5", 2300/Roll, 11/32 Index	A/R
67-26069-4R	Labels 4" x 2.5", 2300/Roll, 11/32 Index (Removable Adhesive)	A/R
67-26069-5	Labels 4" x 1", 5500/Roll, 11/32 Index	A/R
67-26069-6	Labels 1" x 2", 5500/Roll, 11/32 Index	A/R
67-26069-6R	Labels 1" x 2", 5500/Roll, 11/32 Index (Removable Adhesive)	A/R

A/R -As Required

**Eastman®**

*Over a Century of Cutting Expertise*

## LABELER v1.2 LABEL PRINTING SOFTWARE

This document provides instructions for the use of the Labeler v1.2 label printing program (**Labeler.exe**). The program provides a very basic mechanism for designing and printing sample labels. The Labeler v1.2 application is designed to be used only with the Panasonic EPL-1700 label printer.

The Labeler v1.2 program is written as a Single Document Interface (SDI) application. This means that only one label file may be opened at a time. This is similar to other simple Windows applications such as Notepad or Paint. All user inputs are made through the options available on the main menu bar. The application window shows an approximation of the current label layout. There are no provisions in the application for direct graphical manipulation of label components (e.g., drag and drop) within the label drawing.

The Labeler program saves the label design in a text file. This text file is used by EasiCut to generate formatted label text entities and by Plotterw to process label text and to print labels. If the label design file is to be used by EasiCut and Plotterw it must be named Plotter.LBL and must be in the same folder as the EasiCut program file.

### 1. Program Limitations

There are certain limitations that are imposed by the Labeler software and by the Panasonic EPL-1700 printer. Some of these limitations may just be a misunderstanding in the way the printer functions and such limitations may be eliminated in future releases of the Labeler program.

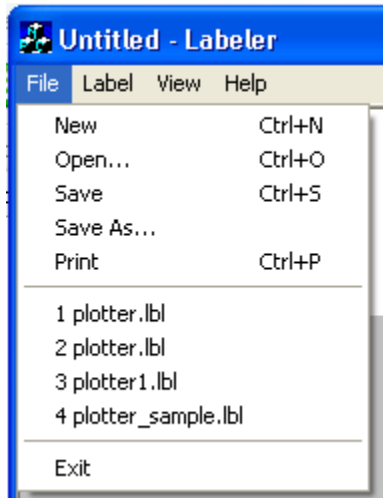
The Page Feed option in the Label Options dialog box does not work properly. The first label is printed correctly and the printer feeds the amount specified in the Page Length edit box but all subsequent printing is ignored. Printer power must be cycled and the label paper reregistered before printing may resume. This problem may be due to the fact that the printer's photo sensor is detecting the registration bars on the back of the label paper.

The Cut After Print option in the Label Options dialog box has no effect since the Panasonic printer has no cutter mechanism.

If the Marker Search option is selected in the Label Options dialog box, the Feed Dist must be set to a value of 0.2 or greater. A lower distance value causes the printer to hang after the marker search operation has completed.

The Underline and Negative (white-on-black) font options in the Label Fields dialog box do not produce the expected printer output. These printer command codes were not properly interpreted by the printer when sent. Therefore, the Underline and Negative font options are currently not functional.

A line containing a barcode field may not contain any other type of field. This appears to be a limitation of the printer. Since the printer does allow feeding paper in the reverse direction, fields on the same line may be printed in two or more passes. However, this added complexity is not incorporated into this version of the Labeler application.



### 2. File Menu

The File menu includes basic options familiar to all users of Windows based applications.

The New option erases the current label entity and creates a new label entity with default parameter settings. If the current label settings were not saved to a file, a message reminds the user to do so.

The Open option displays the standard File Open dialog box allowing the user to specify the name of an existing label file. The default file name extension for label files is LBL. The specified file is read into memory and the label layout is displayed in the Labeler window. If the previous label settings were not saved to a file, a message reminds the user to do so.

The Save option is used to save the settings of the current label to a file. If no file name is associated with the label entity, the Save As dialog box is displayed to allow the user to specify the name and location of the label file. The default file name extension for label files is LBL.

The Save As option saves the settings of the current label entity to a new file. The standard Save As dialog box is displayed to allow the user to specify the name and location of the new label file. The default file name extension for label files is LBL.

The Print option is used to output the label contents to the Panasonic EPL-1700 printer. First, a dialog box is displayed to allow selection of the printer serial port (COM port) and baud rate. This dialog box also allows input of matching text which is used to select label data from an external file and allows selection of a master field for the label. The master fields selection list is only available if two or more master fields are included in the currently opened label file.

Click the Cancel button to cancel the label printing. To print the label, select the correct port and baud rate, enter external file match text if applicable, select a master field if applicable and click OK. The Labeler program validates the position of label fields prior to printing. If an error is detected (e.g., overlapping fields or fields extending beyond the edge of the label), an error message is displayed and label printing is terminated.

If the printer is not powered up or not connected to the PC or if the printer interface times out, a CTS HOLD error message is displayed.

The MRU List in the file menu includes the names of the most recently accessed label files. These options are included in the File menu to provide for easy access to the current working file or other frequently accessed label files.

The Exit option is used to terminate execution of the Labeler program. If the current label settings have not been saved to a file, a message reminds the user to do so before the program exits.

### 3. Label Menu

The Label menu contains the options used to modify the contents and layout of the current label.

The Options option displays a dialog box within which the user may specify general label layout and printing parameters. The label Width and Height are specified in centimeters. These settings should agree with the label paper currently loaded in the printer. Use the Left Margin setting to move the left edge of any printed text away from the left edge of the label paper. Of course, the actual location of the left margin will depend on how close the left edge of the label paper corresponds to where the printer thinks the left edge of the paper is. If necessary, the Width value may be

increased to accommodate a label paper position which requires an artificially high left margin setting.

Check the Rotate 180 deg checkbox to print the label upside down.

The Panasonic printer supports two methods of feeding label paper. The Marker Search method utilizes a registration mark on the paper roll. The Search Distance specifies the maximum distance that the printer will feed paper in search of this registration mark. The Feed Distance is the amount that the printer will feed the paper after the registration mark has been located. Be sure to set a Feed Distance of at least 0.2 cm.

The Page Feed method of feeding label paper relies on a fixed label spacing which must be specified in the Page Length setting. Each time a form feed character is sent to the printer, the printer feeds paper until the top of the next page (as defined by the page length) is reached. This is similar to the mechanism used in conventional printers using continuous form or fanfold paper.

Check the Cut After Print option to activate the printer's automatic cutter after the label has been printed.

**Eastman®**

*Over a Century of Cutting Expertise*

The **Fields** option displays a dialog box used to manipulate the text and barcode fields within the current label. The currently selected label field is shown in the **Field** combobox control in the upper left. All settings displayed in the dialog box pertain to the currently selected field. Once all field settings have been made, click the **OK** button to save the settings. Click the **Cancel** button to cancel changes made to all fields (not just the currently selected field).

Click the **Add** button to add a new field to the label. A dialog box is displayed to allow entering the name of the field. Duplicate names are not allowed. Also, the name may not contain any spaces.

Click the **Delete** button to remove the currently selected field from the label.

The **Line Number** and **Position** settings specify the location of the field within the label. Since the printer adjusts the height of each printed line based on the height of the largest font used within that line, the horizontal positioning of individual fields is somewhat limited. The top line of a label is line 1. Any blank lines within a label are treated as standard height 16-dot font lines and are equivalent to about 3mm of blank space. The **Position** setting is the distance from the left margin as specified in the **Label Options** dialog box. It is equivalent to the distance from the left edge of the label only if the left margin setting is zero.

The **Source** combo box contains a list of available text sources for the field. The available text sources are: **Fixed**, **Panel Name**, **Panel Text**, **Operator**, **Operator/Panel Text**, and **From External File**. The last source option is only available if the **Use External Data** option is checked in the **External Data** dialog box (see below). The **Fixed** source uses the text entered in the **Text** edit box when printing the label field.

This source option should be used for all fields when developing a test label; all other options are meant to be used when developing a label file (\*.lbl file) for use with the **EasiCut** application. The **Panel Name** option causes the name of the panel or part found in the drawing file to be printed in the field. The **Panel Text** option prints the contents of a text entity found in the panel. The text entity is identified by entering its sequence number in the **Item#** edit box. The **Operator** source indicates that the contents of the field will be specified by the operator in the **EasiCut** application. The **Text** edit box is used to enter the edit box label that is displayed in **EasiCut**. The **Operator/Panel Text** source identifies a label field for which the contents are specified by the **EasiCut** operator as described above but the operator's entry may be overridden by a text entity found in the drawing panel. The overriding text entity is identified by entering its sequence number in the **Item#** edit box.

If the **From External File** source is selected, the field's contents are obtained from an external data file defined in the **External Data** dialog box (see below). Use the **Item#** edit box to specify the column or line item number of the field text within the external file. This source option is only available if the **Use External Data** option is checked in the **External Data** dialog box (see below).

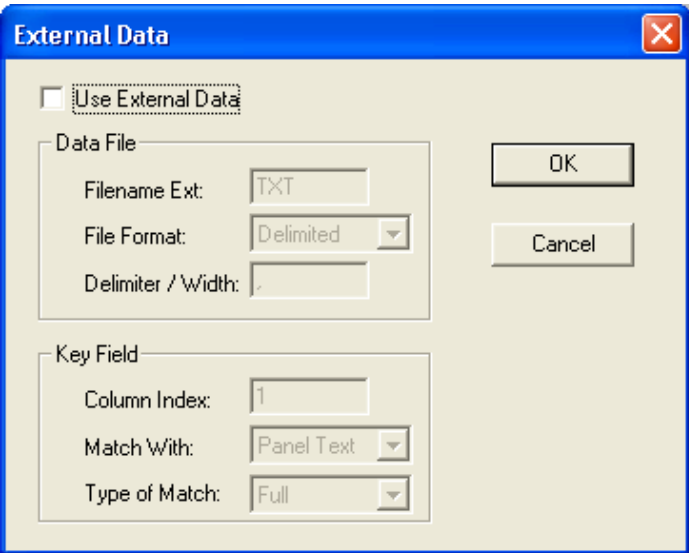
The **Max Char** setting is used to specify the extent of the field in the label layout drawing and on the printed label. In the case of a **Fixed** source field, the **Text** string is truncated before printing if the string is longer than the **Max Char** setting. If the **Text** string is shorter than the **Max Char** setting, it is padded with spaces prior to printing. For all other source options, the name of the source is used as the field text. The name is truncated or padded with spaces, as required.

The **Master Field** option is only available for **Panel Text** and **Operator/Panel Text** fields. The **Master Field** option is used in two ways. First, the master field in a label will be used to determine the location of the printed label on the panel or piece. Second, a separate label is printed for each master field in a label definition. Each master field is only included in its own unique label while all other fields are included in all labels associated with a master field. If no master field is selected for a label, the label position is based on the first text entity found in the panel or, if none is found, the label is positioned at the center of the panel.

For text fields, one of eight possible **Font** styles may be selected. The text may also be underlined or printed in a negative (white-on-black) format. Although the program allows both options to be selected, the **Panasonic** printer does not support white underlining of negative text. The **Bold** and

Italics options are permanently disabled, and are included for possible future use with other printers.

If a Barcode field is desired, one of seven available barcode types may be selected. Select one of the available locations for the human readable interpretation (HRI) text associated with the barcode. Note that for UPC-A, UPC-E, JAN13 and JAN8 barcodes, the text is always printed below the barcode. Remember to put each barcode field on its own line.



The External Data option displays a dialog box used to specify the format of a text file which contains data for one or more label fields. These fields must have their Source set to From External File. The Use External Data option must be checked to enable use of an external text file for label text.

Enter the file name extension of the external text file in the File name Ext text box. The base file name of the external text file must be the same as the name of the corresponding drawing file. The File Format combobox allows selection of a Fixed Width or a Delimited option. If the external text file consists of fixed width columns, enter the column width in the Delimiter / Width text box. If the external text file consists of variable length, delimited text, enter the delimiter character in the Delimiter / Width text box. The most frequently used delimiter character is the comma.

The Key Field settings identify the entry within each line of the external text file that contains the text which specifies the drawing panel or part that corresponds to that line. The Column Index specifies the sequential index of the text entry within a line of text in the external file. The Match With combobox is used to select the source of the text which must match the key field text (at Column Index) found in the external file. The Panel Name option is used if the key field

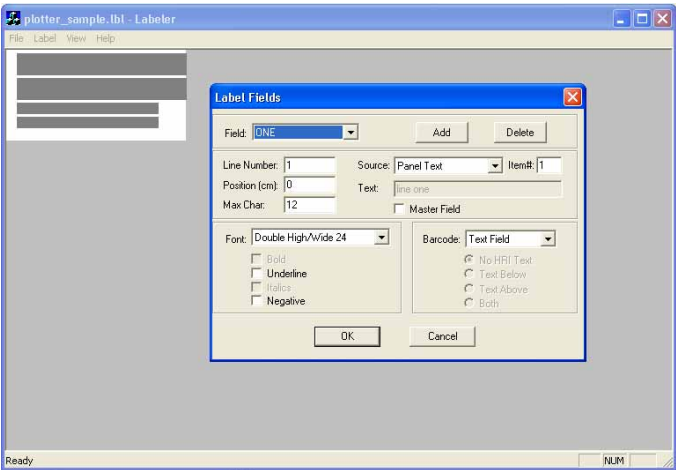
text specifies the drawing panel or part name and the Panel Text option is used if the key field text matches the contents of the first text entity found in the drawing panel.

**4. View Menu**

The View menu contains the Status Bar option which is used to make the status bar at the bottom of the application window visible or invisible.

**5. Help Menu**

The Help menu contains the About Labeler option which displays information about the Labeler application including the version number.



**6. Label Layout Drawing**

The layout of the current label or labels is displayed in the Labeler application window. This drawing shows the outline of each label in white. The location of each field defined in the Label Fields dialog box is indicated by a gray or yellow rectangle. Text fields are shown in gray while barcode fields are shown in yellow. The height and width of each rectangle is meant to indicate the relative size of each field. In the case of barcode fields, the height of the yellow rectangle includes any human readable text included with the barcode symbol itself.

If two or more fields within the label file have the Master Field option checked, a separate label is displayed for each master field. Each master field is displayed in only one of these labels while other fields are displayed in all labels.

The current version of the Labeler application does not support mouse interactions with the label drawing.

**Eastman®**  
*Over a Century of Cutting Expertise*

## GLOSSARY

### CMD File

A CMD file is a drawing file format proprietary to Eastman Technology Systems, Ltd. All files loaded into the cutting machine are first converted to a CMD file format.

### Cutting Mode

The EasiCut 2.3 application is in the cutting mode when the currently active drawing window displays the file currently loaded in the machine. The cutting mode window is identified by its yellow border area and the three asterisks appended to the drawing file name in the window's title bar. There may be only one cutting mode window opened at any one time. The cutting mode refers only to the EasiCut application and not to the machine itself. The cutting machine can cut a file regardless of the EasiCut application mode.

### Dialogs Area

The dialogs area of the EasiCut main application window refers to an area at the bottom or the left edge of the window that is allocated for display of the Layers, Tools and/or Status dialog boxes. The location of the dialogs area may be set using the [Dock Left](#) and [Dock Bottom](#) options. The dialogs area may be resized by moving the splitter bar that separates it from the drawing area. The dialogs area can never be deleted.

### Drawing Area

The drawing area refers to that part of the EasiCut main application window not occupied by the dialogs area, toolbar, status bar or menu bar. All drawing files are opened in windows that appear within the drawing area. If drawing windows are maximized, the entire drawing area is filled with a single drawing file. Otherwise, one or more drawing file windows may be visible within the drawing area.

### Drawing File

A drawing file is a file containing a description of a geometric pattern that corresponds to the cutting, punching, drawing, etc. functions to be performed by the cutting machine. Drawing files are generally created by a separate CAD application. EasiCut 2.3 supports the cutting of CMD, DXF, HPGL, GCODE, EPS, NST, NTV, CEI, PLX and PAT drawing files.

### Job File

A job file consists of a list of drawing files, their associated material types and a set of file processing and system configuration parameters that are shared by all the drawing files. Job files are used to group drawing files that share a common processing environment. Job files are identified by a JOB file name extension. The default job file is EASICUT.JOB. Other job files may be created and accessed using the Job Menu. The contents of a job file are modified using the [Job Options](#) dialog box.

### Layer

A layer is used in a drawing file to define a set of features or characteristics that may be shared by more than one drawing entity. When an entity is added to a drawing file and placed on a specific layer, the entity inherits the characteristics defined for that layer. The layers are initially defined in the CAD application used to create the drawing file. Within the CAD application a layer specifies graphics characteristics such as line style and line color. In EasiCut 2.3 the drawing layers also can specify what tool will be used to cut the entities on that layer and what tool settings to use.

### Layout Mode

In the layout mode, the currently active drawing file window is opened for viewing and editing the drawing. When a drawing file is opened, it is always opened in layout mode window. A layout mode window may be transformed into a simulate mode window by selecting the Simulate Mode option. A layout mode drawing file may be copied to the cutting mode window by selecting the Cut option. Any number of drawing files may be opened in layout mode windows. The layout mode refers only to the EasiCut application and not to the machine itself. The cutting machine can cut a file regardless of the EasiCut application mode.

### MACHINE.INI File

The MACHINE.INI file is a text file that contains system configuration and calibration settings as well as definitions for all available tools. The [Machine Options](#) dialog box and the [Calibration Options](#) dialog box are used to view and modify the contents of the MACHINE.INI file. The MACHINE.INI file should never be edited directly using a text editor.

### Mapping

A mapping refers to the association of a drawing layer with a particular cutting machine tool. When a layer is mapped to a tool it means that all drawing entities on that layer will be cut by that tool. The tool settings associated with the mapped layer will override the default settings included in the tool definition. A layer may be mapped to a tool graphically using mouse drag-and-drop actions in the [Layers](#) and [Tools](#) dialog box. A layer may also be mapped to a tool in the [Layers tab](#) of the Job Options dialog box. All layer mappings are specified for the current job only.

### MATERIAL.INI File

The MATERIAL.INI file is a text file that contains definitions for all available material types and the layer mappings associated with each material. The [Material Options](#) dialog box is used to view and modify the contents of the MATERIAL.INI file. The MATERIAL.INI file should never be edited directly using a text editor.

### Motion Control Software

EasiCut 2.3 communicate with the cutting machine through separate motion control software which resides in a program named

---

PLOTTERW. EasiCut 2.3 controls the cutting machine by sending messages to the PLOTTERW program which in turn executes the control commands. Similarly, EasiCut 2.3 is informed of the current machine status through messages received from PLOTTERW. The process of loading a file into the cutting machine actually consists of several steps. EasiCut 2.3 converts the drawing file to a CMD file and sends the name of the CMD file to the PLOTTERW program. The PLOTTERW program reads the CMD file, converts the contents of the file to cutting machine control commands and then executes those commands.

### **Mount**

See Tool Mount.

### **Operator User**

An Operator user is only allowed access to those EasiCut 2.3 functions that pertain directly to opening and cutting files. An Operator user has no access to functions that can alter a drawing file or the current state of the system. The Operator user is only recognized while the security system is enabled.

### **Order**

An order is a database record created by Eastman's EasiOrder order entry application and transferred to EasiCut using the Refresh option of the Orders Menu. An order contains information describing the shape, size and quantity of panels to be cut for a customer. The information in an order is converted to a drawing file by the Open Cut Jobs option of the Orders Menu.

### **Plotterw**

See Motion Control Software.

### **Simulate Mode**

The simulate mode is active any time the currently active drawing file window is opened for cutting simulation. A drawing file must first be opened in the layout mode before it can be changed to the simulate mode. A simulate mode drawing window may be transformed back into a layout mode drawing window by selecting the Layout Mode option. A simulate mode drawing file may not be placed in the cutting mode window. Any number of drawing files may be opened in the simulate mode windows. The simulate mode refers only to the EasiCut application and not to the machine itself. The cutting machine can cut a file regardless of the EasiCut application mode.

### **Software Key**

A software key is an encrypted file containing a code that must be read by the EasiCut 2.3 application before it will initiate normal operations. Without a software key, the EasiCut 2.3 application will not load files into the cutting machine nor will it save modified

or converted drawing files to disk. The software key is created by EasiCut 2.3 when a valid coded text string (obtained from Eastman) is entered at the appropriate prompt the first time EasiCut is executed.

### **STATION.INI File**

The STATION.INI file is a text file that contains information about each table zone and each station specified for each table zone. This file is only used when zone cutting is enabled, i.e., a static table is divided into two cutting areas or zones. The Station Options dialog box is used to view and modify the contents of the STATION.INI file. The STATION.INI file should never be edited directly using a text editor.

### **Supervisor User**

The supervisor user is the EasiCut 2.3 security system manager or system administrator. This user has the highest available privilege level and is the only user authorized to access the Calibration and the User Management options. There is one and only one supervisor user in the authorized user list. If the security system is disabled, the supervisor user is not recognized.

### **Table Bite**

If the pattern in a drawing file is longer than the available length of the cutting table, the drawing is divided into two or more table bites. Each such bite is processed as an individual pattern and table bites are processed sequentially from the beginning of the drawing file to the end. The available cutting table length is determined by the Table Left and Table Right settings on the Home Tab of the Machine Options dialog box.

### **Tool**

A tool refers to a physical cutting, punching or marking implement which may be attached to a tool mount of the cutting machine. EasiCut 2.3 supports the creation of tool definitions that refer to a specific tool, that tool's mounting location on the cutting machine, and the tool's operating parameter settings.

### **Tool Mount**

Each tool installed on the cutting machine is attached to a tool mount. Each tool mount includes controls that lower the tool to the table, lift the tool from the table and rotate the tool. The number and type of tool mounts available on a cutting machine depends on the type of tool head installed.

### **User Interface Terminal**

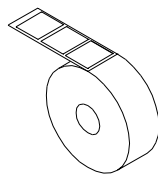
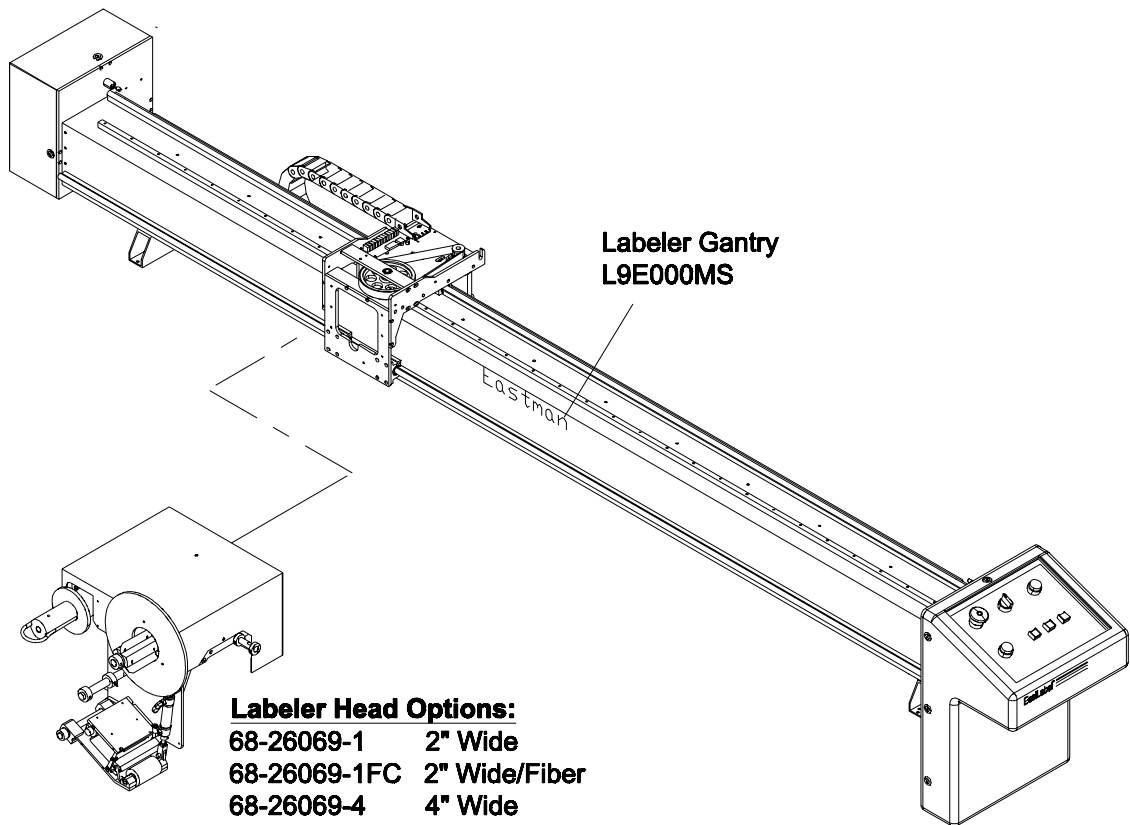
The User Interface Terminal (UIT) is the operator control console for the cutting machine. It is located on the tool head carriage or gantry at the front of the machine. The UIT includes a keypad, four line display and a joystick.

---

# **Eastman®**

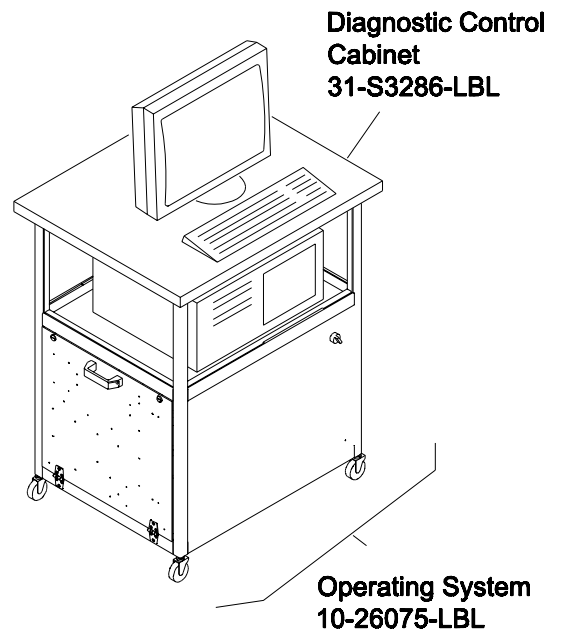
*Over a Century of Cutting Expertise*

## *Pictorial Index, Eagle Labeler*



### **Optional Labels:**

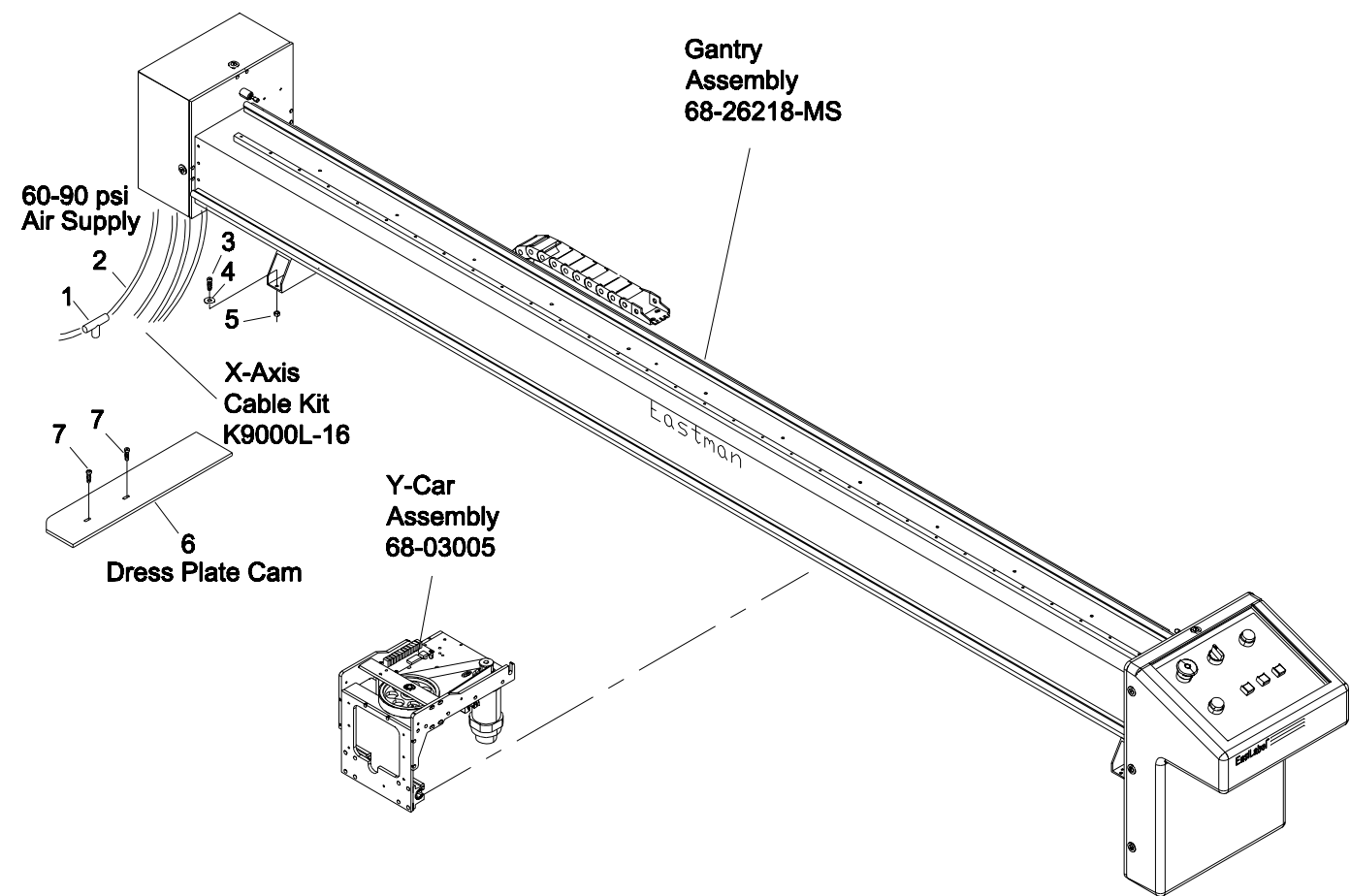
67-26069-4	4" x 2.5", 2300/Roll, 11/32 Index
67-26069-4R	4" x 2.5", 2300/Roll, 11/32 Index (Removable Adhesive)
67-26069-5	4" x 1", 5500/Roll, 11/32 Index
67-26069-6	1" x 2", 5500/Roll, 11/32 Index
67-26069-6R	1" x 2", 5500/Roll, 11/32 Index (Removable Adhesive)



# Labeler Gantry

## L9E000MS

ITEM	PART NO.	DESCRIPTION	QTY.
1	100-14-1	Tee Fitting, 1/4" Tube	1
2	27-02996-1	1/4" Air Tubing	4
3	335-102-16	Screw, Socket Hd. #10-32 x 1	4
4	410-010	Washer, Flat #10	4
5	216-102	Nut, Elastic Stop #10-32	4
6	54-27027	Cam Dress Plate	1
7	333-102-10	Screw, Button Hd. #10-32 x 5/8	2



K9000L-16	Cable Kit
27-02996-1	1/4" Air Tubing
31-B1013-40	AC Power Cable
31-S3340-40	I/O Cable
31-S3275-40	Serial Cable
31-26029-1	Y-Motor Power Cable
31-26030-1	Y-Motor Encoder Cable

○ 27-02996-1 Air Line, 1/4"

**Eastman®**  
Over a Century of Cutting Expertise

## Gantry Assembly 68-26218-MS

ITEM	PART NO.	DESCRIPTION	QTY.
1	54-26965	Rear Cover	1
2	409-93-1	Finish Washer, Black	9
3	333-93-6	Screw, Button Hd. #8-32 x 3/8	9
4	100-17-1	Bulk Head Union, 1/4" Tube	1
5	54-26962	Pan, Eagle Labeler	1
6	67-01005	DB-Screw Lock	8
7	333-86-4	Screw, Button Hd. #6-32 x 1/4	12
8	305C8-1	Screw, Binding Hd. #4-40 x 1/4	4
9	410-060	Washer, Flat #6	4
10	54-C0306	Cover Mounting Blocks	9
11	402-080	Washer, Lock #8	16
12	335-93-8	Screw, Socket Hd. #8-32 x 1/2	16
13	10-00903-2	X-Axis Board	1
14	206-44	Nut, Jam Hex 1/2-20	2
15	100-13-7	Swivel Elbow, 1/8 npt, 1/4" Tube	2
16	100-18-4	Regulator with Gage	1
17	335-102-6	Screw, Socket Hd. #10-32 x 3/8	2
18	410-010	Washer, Flat #10	2
19	100-19-9	Mount, Regulator	1
20	54-26964	Back Frame, Labeler	1
21	67-01053	Stop Collar	2
22	67-01051-1	Shock Absorber	2
23	335-93-8	Screw, Socket Hd. #8-32 x 1/2	18
24	335-93-8	Screw, Socket Hd. #8-32 x 1/2	4
25	67-26181	Panduit Top	A/R
26	67-26111	E-Chain	A/R
27	67-26178	Cable Separators	A/R
28	67-26177	Mounting Brackets, E-Chain (set)	1
29	211-34	Elastic Stop Nut, 1/4-20	2
30	333-102-16	Screw, Button Hd. #10-32 x 1	2
31	54-C0320-2	Cable Clamp	1
32	54-26055	Mounting Tube	2
33	333-34-6	Screw, Button Hd. 1/4-20 x 3/8	4
34	211-102	Elastic Stop Nut, #10-32	2

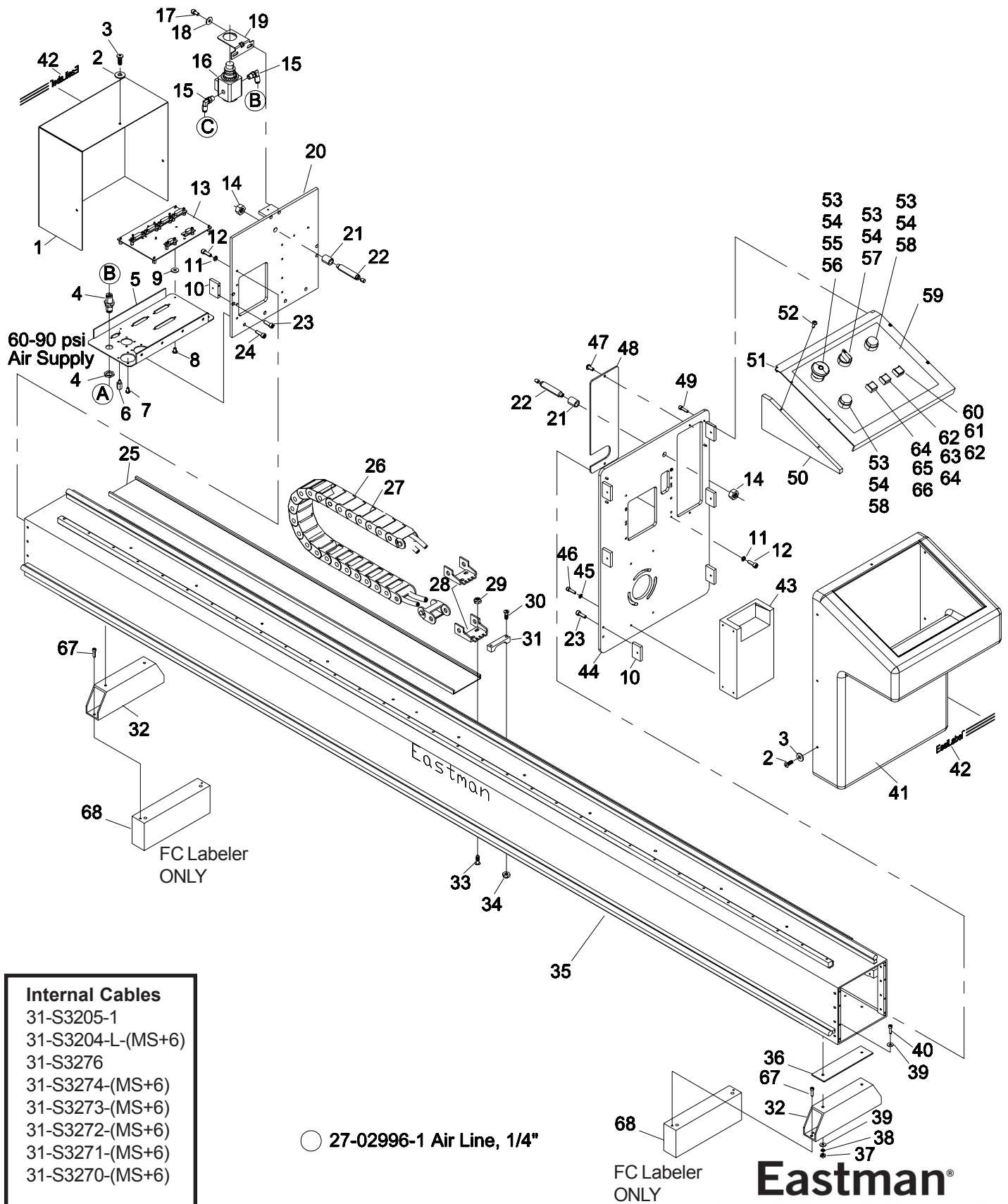
ITEM	PART NO.	DESCRIPTION	QTY.
35	68-26217-MS	Main Tube Assembly	1
36	54-26967	Mounting Shim	1
37	203-102	Nut, Hex #10-32	4
38	402-010	Washer, Lock #10	4
39	410-010	Washer, Flat #10	8
40	335-102-12	Screw, Socket Hd. #10-32 x 3/4	4
41	67-26094	Cover, Front	1
42	91-26008	Decal, Easi Labeler	2
43	31-27004	Power Supply, -15v/+5v/+24v	1
	31-27004-2	Mount & Cover, Power Supply	1
44	54-26125-1	Frame, Front Labeler	1
45	402-060	Washer, Lock #6	4
46	335-86-8	Screw, Socket Hd. #6-32 x 1/2	4
47	333-93-6	Screw, Button Hd. #8-32 x 3/8	2
48	54-26416	Cover, E-Chain Side	1
49	335-86-8	Screw, Socket Hd. #6-32 x 1/2	4
50	54-26136	Control Panel Support	2
51	54-26409	Control Panel, Easi Labeler	1
52	333-86-6	Screw, Button Hd. #6-32 x 3/8	4
53	31-00830	Switch Base	1
54	31-00831	Contact Block N.O.	1
55	31-00832	Contact Block N.O.	1
56	31-12943	Red Stop Button	1
57	31-00828	Selector Switch, Black	1
58	31-12628	Yellow Button Switch	1
59	91-26016	Panel Decal	1
60	31-26012-11	Lens Cap, Red	1
61	11-4190	Switch Actuator, Momentary	1
62	11-4192	Contact Block, spdt	2
63	11-4194	Lens Cap, White	1
64	11-4191	Switch Actuator, Maintain	2
65	11-4193	Contact Block, dpdt	1
66	11-4195	Lens Cap, Green	1
67	335-102-8	Screw, Socket Hd. #10-32 x 1/2	4
68	54-26055-FC	Lift Block, FC Labeler Gantry ONLY	2

MS - Machine Size

A/R - As Required

Please Specify machine voltage and complete serial number when ordering replacement parts.

Item numbers are for reference only. Please Specify PART NUMBER when ordering replacement parts.



## Main Tube Assembly 68-26217-MS

ITEM	PART NO.	DESCRIPTION	QTY.
1	333-93-8S	Screw, Button Hd. #8-32 x 1/2	A/R
2	54-26133-MS+6	Main Tube Cover	1
3	67-26386-MS+6	Linear Rail	2
4	67-C0220-MS+6	Linear Rail Mount	2
5	67-12990-1-MS+6	Gear Rack, 96" 20p	1
6	54-C0411-MS+6	Rack Support	1
7	333-86-16	Screw, Button Hd. #6-32 x 1	6
8	410-060	Flat Washer, #6	6
9	31-00921	Roller Switch	3
10	211-86	Stop Nut, #6-32	6
11	54-C0305-4	Mounting Insert, Main Tube	4
12	410-010	Flat Washer, #10	8
13	335-102-6	Screw, Socket Hd. 10-32 x 3/8	8
14	91-26003	Decal, Eastman 4" Medium	1
15	70-26001	Duct, 1 x 1.5	A/R
16	67-02634	Duct Cover, 1"	A/R
17	211-102	Stop Nut, #10-32	A/R
18	70-26005	Duct, 2" Wide	A/R
19	70-26006	Duct Cover, 2"	A/R

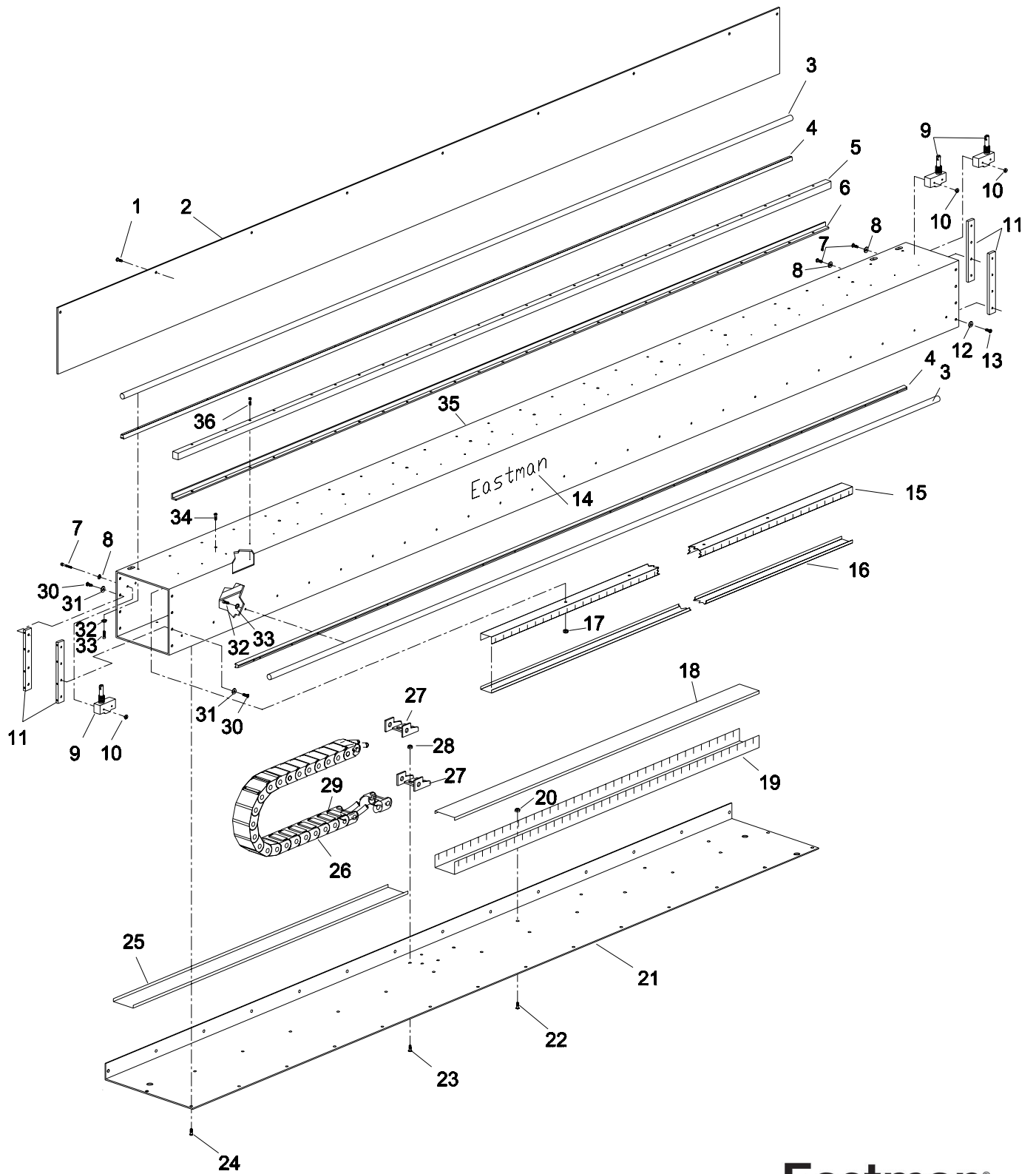
ITEM	PART NO.	DESCRIPTION	QTY.
20	211-102	Stop Nut, #10-32	A/R
21	54-C0410-MS+6	Belly Pan	1
22	333-102-6	Screw, Button Hd. 10-32 x 3/8	A/R
23	333-34-6	Screw, Button Hd. 1/4-20 x 1/4	2
24	333-102-4	Screw, Button Hd. 10-32 x 1/4	A/R
25	67-26080	Duct Cover, 2 1/2"	A/R
26	67-26111	E-Chain (Sold by the Foot)	A/R
27	67-26177	E-Chain Mounting Set	1
28	211-34	Stop Nut, 1/4-20	2
29	67-26178	E-Chain Cable Separators	A/R
30	335-102-6	Screw, Socket Hd. 10-32 x 3/8	8
31	410-010	Flat Washer, #10	8
32	335-86-12	Screw, Socket Hd. 6-32 x 3/4	A/R
33	402-060	Lock Washer, #6	A/R
34	333-102-6	Screw, Button Hd. 10-32 x 3/8	A/R
35	54-26961-MS	Labeler Main Tube	1
36	333-86-16	Screw, Button Hd. #6-32 x 1	A/R

A/R -As Required  
MS - Machine Size

<input type="radio"/>	27-02996-1	Air Tubing, 1/4" (not shown)	A/R
<input type="checkbox"/>	27-02996-2	Air Tubing, 5/32" (not shown)	A/R

Please Specify machine voltage and complete serial number when ordering replacement parts.

Item numbers are for reference only.  
Please Specify PART NUMBER when ordering replacement parts.



**Eastman®**  
Over a Century of Cutting Expertise

# Y-Car Assembly

## 68-03005

ITEM	PART No.	DESCRIPTION	QTY
1	335-93-8	Screw, Socket Hd. #8-32 x 1/2	4
2	342-86-4	Setscrew, #6-32 x 1/4	2
3	54-H0232	Y-Car Backlash Plate	2
4	67-00520	Bearing, Y-Car Pulley	2
5	67-D0216-1	Snap Ring, 3/8	3
6	54-12985	Large Y-Car Pulley, 72T	1
7	342-102-5	Setscrew, #10-32 x 5/16	2
8	54-H0233	Backlash Cross Plate	1
9	54-D0267	Y-Car Drive Shaft	1
10	9063-003	1/8" Square Key	1
11	54-02934-3	Small Y-Car Pulley, 25T	1
12	342-86-4	Setscrew, #6-32 x 1/4	2
13	67-D0215	Y-Car Drive Belt, 113T	1
14	54-H0235	Y-Car Left Side Plate	1
15	335-93-8	Screw, Socket Hd. #8-32 x 1/2	44
16	54-H0231	Y-Car Horiz. Plate, 2nd	1
17	54-H0236	Y-Car Main Vertical Plate	1
18	335-93-8	Screw, Socket Hd. #8-32 x 1/2	2
19	67-06818	Y-Car Bearing Assembly	4
*20	31-S3205-1	Y-Car Motor w/Connector	1
21	335-93-12	Screw, Socket Hd. #8-32 x 3/4	4
22	402-080	Lock Washer, #8	4
23	342-93-3	Setscrew, #8-32 x 3/16	2

ITEM	PART No.	DESCRIPTION	QTY
24	54-D0214	Y-Car Motor Pulley, 15T	1
25	54-H0234	Y-Car Right Side Plate	1
26	54-H0341	Home Plate	1
27	54-H0230	Y-Car Main Plate	1
28	332-86-8	Screw, Flat Hd. #6-32 x 1/2	2
29	211-93	Lock Nut, #8-32	4
30	335-102-8	Screw, Socket Hd. 10-32 x 1/2	16
31	27-H0410	1/4 NPT Plug	2
32	333-34-6	Screw, Button Hd. 1/4-20 x 3/8	2
*33	67-26177	E-Chain End Bracket	1
34	10-00904-2	Y-Axis Board	1
35	404-060	Lock Washer, #6	4
36	333-86-8	Screw, Button Hd. #6-32 x 1/2	4
37	27-02996-1	Spacer Tubing (sold by foot)	A/R
*38	68-26010	Solenoid Ass'y, 2 Station, 12v	1
39	100-13-3	5/32" Swivel Elbow	2
40	27-H0409	1/8 NPT Plug	2
41	100-11-2	1/4" Fitting	1
43	27-26010	2 Station Solenoid Block (without Electrical Connector)	1
	27-H0382-2	1 Station Replacement Solenoid (without Electrical Connector)	1
44	410-010	Lock Washer, #10	2
45	335-102-10	Screw, Socket Hd, #10-32 x 5/8	2

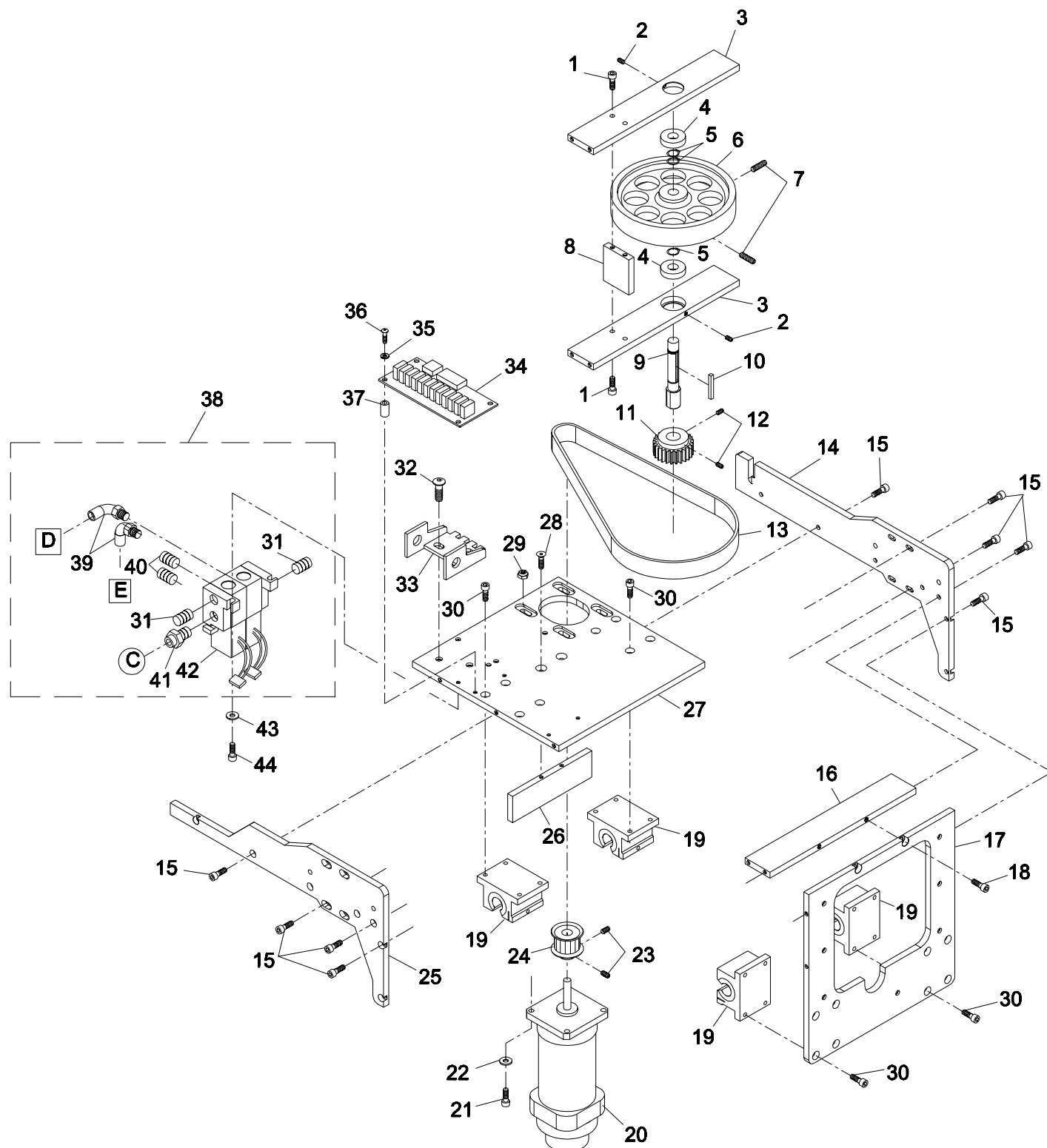
\* Not included in assembly

A/R -As Required

<input type="radio"/>	27-02996-1	Air Tubing, 1/4"	A/R
<input type="checkbox"/>	27-02996-2	Air Tubing, 5/32"	A/R

Please Specify machine voltage and complete serial number when ordering replacement parts.

Item numbers are for reference only.  
Please Specify PART NUMBER when ordering replacement parts.



**Eastman®**

*Over a Century of Cutting Expertise*

# Y-Car Assembly, Fiber Labeler

## 68-03005-FC

ITEM	PART No.	DESCRIPTION	QTY
1	335-93-8	Screw, Socket Hd. #8-32 x 1/2	4
2	342-86-4	Setscrew, #6-32 x 1/4	2
3	54-H0232	Y-Car Backlash Plate	2
4	67-00520	Bearing, Y-Car Pulley	2
5	67-D0216-1	Snap Ring, 3/8	3
6	54-12985	Large Y-Car Pulley, 72T	1
7	342-102-5	Setscrew, #10-32 x 5/16	2
8	54-H0233	Backlash Cross Plate	1
9	54-D0267	Y-Car Drive Shaft	1
10	9063-003	1/8" Square Key	1
11	54-02934-3	Small Y-Car Pulley, 25T	1
12	342-86-4	Setscrew, #6-32 x 1/4	2
13	67-D0215	Y-Car Drive Belt, 113T	1
14	54-H0235	Y-Car Left Side Plate	1
15	335-93-8	Screw, Socket Hd. #8-32 x 1/2	44
16	54-H0231	Y-Car Horiz. Plate, 2nd	1
17	54-H0236-FC	Y-Car Main Vertical Plate	1
18	335-93-8	Screw, Socket Hd. #8-32 x 1/2	2
19	67-06818	Y-Car Bearing Assembly	4
*20	31-S3205-1	Y-Car Motor w/Connector	1
21	335-93-12	Screw, Socket Hd. #8-32 x 3/4	4
22	402-080	Lock Washer, #8	4
23	342-93-3	Setscrew, #8-32 x 3/16	2

ITEM	PART No.	DESCRIPTION	QTY
24	54-D0214	Y-Car Motor Pulley, 15T	1
25	54-H0234-FC	Y-Car Right Side FC Plate	1
26	54-H0341	Home Plate	1
27	54-H0230	Y-Car Main Plate	1
28	332-86-8	Screw, Flat Hd. #6-32 x 1/2	2
29	211-93	Lock Nut, #8-32	4
30	335-102-8	Screw, Socket Hd. 10-32 x 1/2	16
31	27-H0410	1/4 NPT Plug	2
32	333-34-6	Screw, Button Hd. 1/4-20 x 3/8	2
*33	67-26177	E-Chain End Bracket	1
34	10-00904-2	Y-Axis Board	1
35	404-060	Lock Washer, #6	4
36	333-86-8	Screw, Button Hd. #6-32 x 1/2	4
37	27-02996-1	Spacer Tubing (sold by foot)	A/R
*38	68-26010	Solenoid Ass'y, 2 Station, 12v	1
39	100-13-3	5/32" Swivel Elbow	2
40	100-13-7	1/4" Swivel Elbow	2
41	100-11-2	1/4" Fitting	1
43	27-26010	2 Station Solenoid Block (without Electrical Connector)	1
	27-H0382-2	1 Station Replacement Solenoid (without Electrical Connector)	1
44	410-010	Lock Washer, #10	2
45	335-102-10	Screw, Socket Hd, #10-32 x 5/8	2
46	54-26228	Cylinder Mount Bracket	1
47	333-102-10	Screw, Button Hd. #10-32 x 5/8	3
48	54-26227	FC Linear Rail	2
49	67-12983	Linear Bearing	2
50	335-86-10	Screw, Socket Hd. #6-32 x 5/8	6

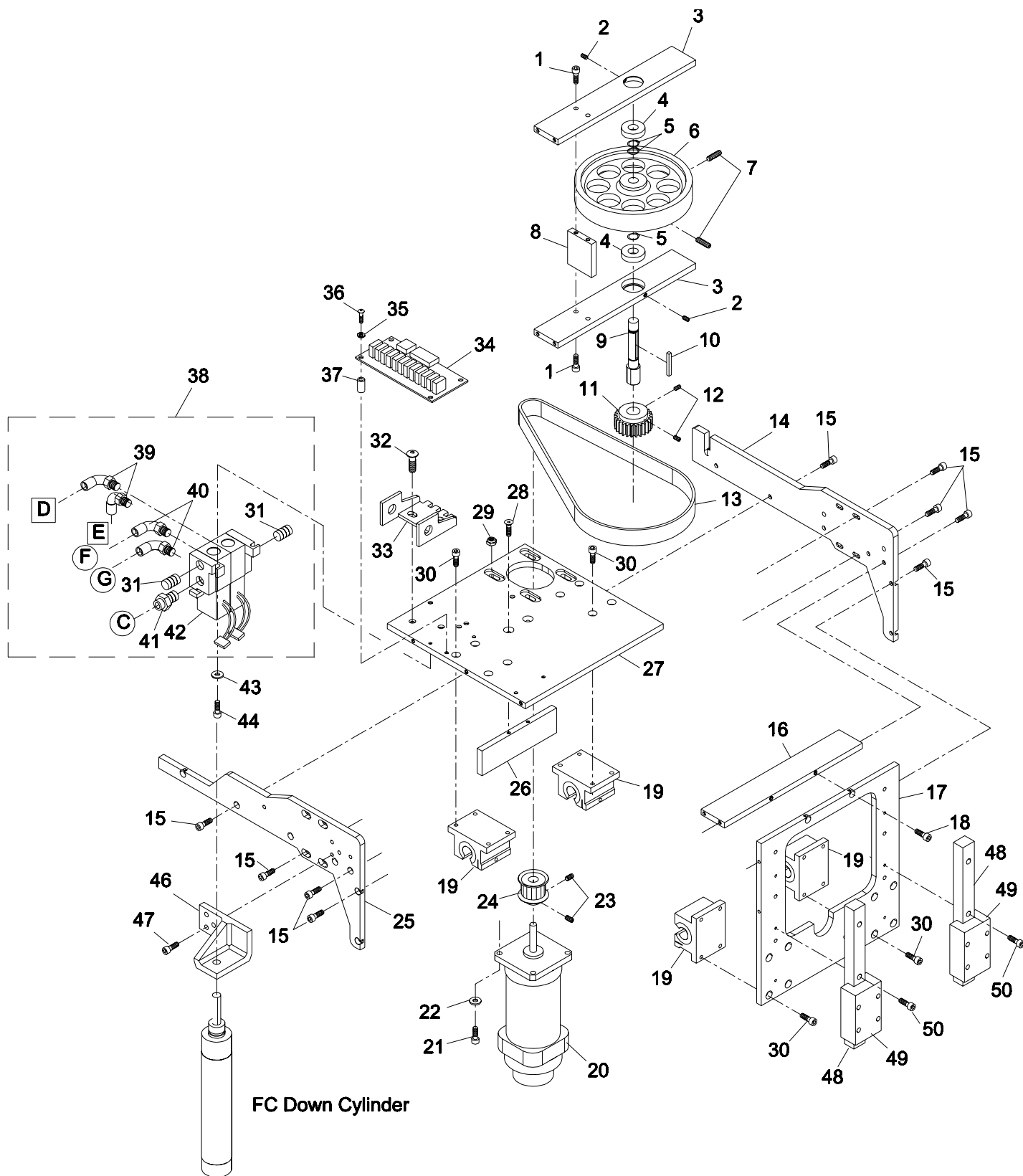
\* Not included in assembly

A/R -As Required

<input type="radio"/>	27-02996-1	Air Tubing, 1/4"	A/R
<input type="checkbox"/>	27-02996-2	Air Tubing, 5/32"	A/R

Please Specify machine voltage and complete serial number when ordering replacement parts.

Item numbers are for reference only.  
Please Specify PART NUMBER when ordering replacement parts.



**Eastman®**

*Over a Century of Cutting Expertise*

## ***Labeler Head Common Parts***

ITEM	PART No.	DESCRIPTION	QTY
1	67-26070-1	Cover, Labeler Head	1
	67-26070-1FC	Cover, FC Labeler Head	1
2	333-102-8S	Screw, Button Hd. #10-32 x 1/2	3
3	409-99-1	Finish Washer, #10	3
4	91-26008	Decal, EasiLabeler	1
5	11-1916	Screw, Nylon #4-40 x 3/8	8
6	10-26044-1	Mini Drive Board	1
7	10-26043-1	Labeler Interface pcb	1
8	335-93-8	Screw, Socket Hd. #8-32 x 1/2	2
9	11-1970	Spacer, Nylon 3/16 Long	8
10	54-26429	PCB Mounting Plate, Labeler	1
11	54-26418	Standoff, Long	1
	54-26418-FC	Standoff, Long, (FC Only)	1
12	342-93-20	Setscrew, #8-32 x 1.25	2
13	54-26029-2	Shock Stop, Long	1
14	65-26013	Collar, Stop	4
15	342-102-4	Setscrew, #10-32 x 1/4	4
16	54-26060	Stop Plate, Long, Micro Switch	1
17	335-102-14	Screw, Socket Hd. #10-32 x 7/8	4
18	333-102-8S	Screw, Button Hd. #10-32 x 1/2	2
19	54-26417	Standoff, Short	2
20	335-102-10	Screw, Socket Hd. #10-32 x 5/8	1
21	54-26029-3	Shock Stop, Short	1
22	54-26060-1	Stop Plate, Short, Micro Switch	1

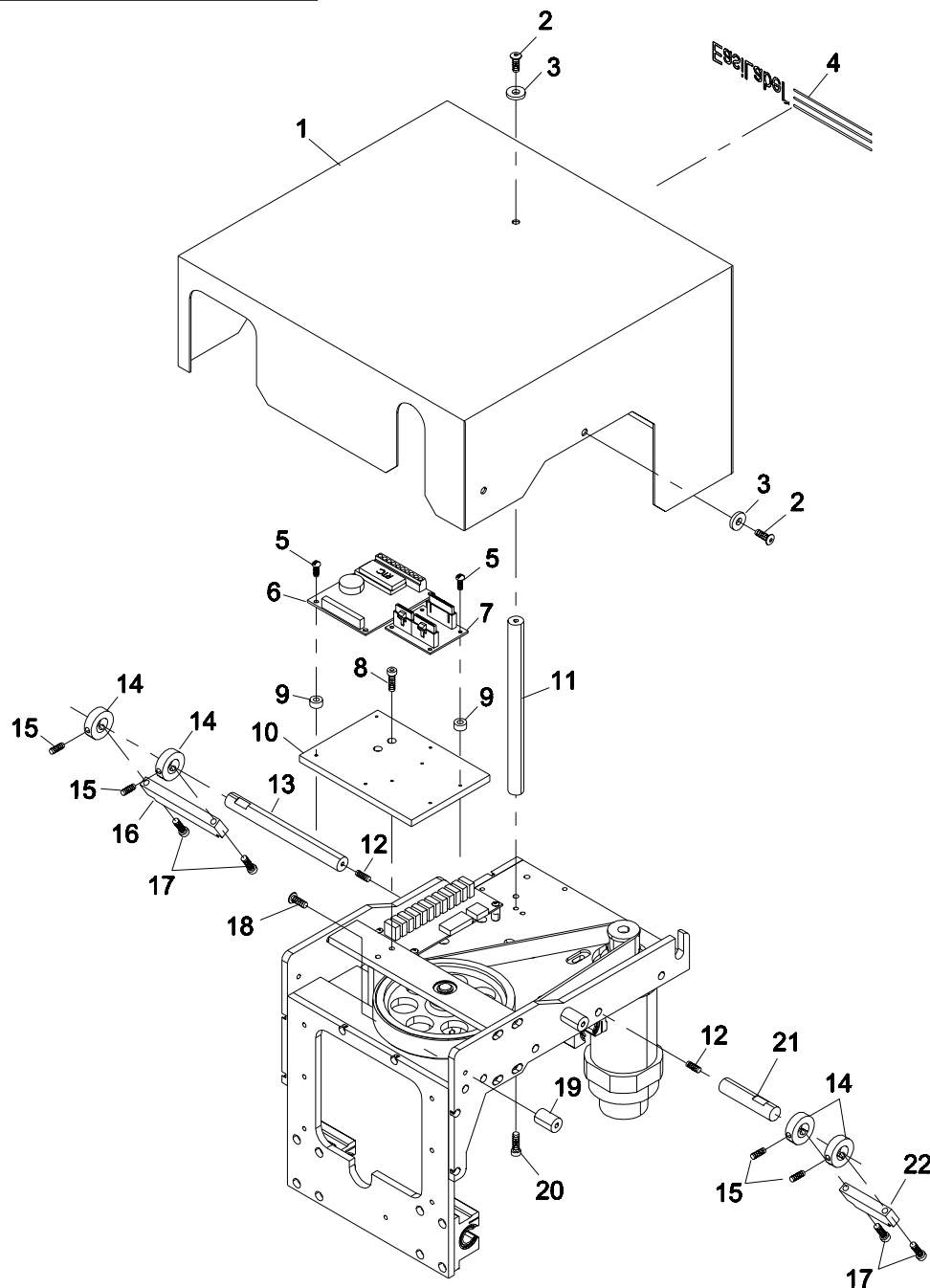
Please Specify machine voltage and complete serial number when ordering replacement parts.

Item numbers are for reference only. Please Specify PART NUMBER when ordering replacement parts.

Cable Harness (not shown)

31-26169-1 Power Cable Assembly

31-26170-1 RS232 Cable Assembly



**Eastman®**

*Over a Century of Cutting Expertise*

## 2" Labeler Head Assembly

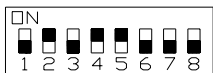
### 68-26069-1

ITEM	PART NO.	DESCRIPTION	QTY.
1	54-26053	Label Roll Stop Disc	1
2	9060-005	Shaft Collar, 5/8" i.d.	2
3	67-26110	Bushing, 5/8" i.d.	2
4	54-26026	Label Paper Hub	1
5	11-1978	Screw, Nylon #10-32 x 3/8	3
6	54-26027	Roll Adjust Bracket	3
7	333-86-6	Screw, Button Hd. #6-32 x 3/8	6
8	54-26033-2	Spool Stud	1
9	31-26181	Motor, Take-up, 24vdc	1
10	335-102-6	Screw, Socket Hd. #10-32 x 3/8	2
11	54-26223-4	Motor Mounting Plate, Labeler	1
12	54-26032	Standoff, Labeler Motor	4
13	54-26034-2	Take up Clutch	1
14	335-102-8	Screw, Socket Hd. #10-32 x 1/2	3
15	54-26042-3	Back Plate, Labeler	1
16	410-010	Washer, Flat #10	4
17	402-010	Washer, Lock #10	4
18	320-102-32	Screw, Binding Hd. #10-32 x 2	4
19	632-32	Retaining Ring, .50 External	1
20	54-26038-2	Take Up Spool Shaft	1
21	9020-0203	Bearing, .50 i.d.	2
22	631-88	Retaining Ring, 1.5 Internal	2
23	65-26018	Spring Washer, .50 i.d.	1
24	54-26362-2	Bearing Block Stop	1
25	511-6-28	Roll Pin, .187 x 1.75 Long	1
26	54-26030-2	Take Up Spool	1
27	54-26031-2	Spring Clip, Label Wrap	1
28	9060-005	Shaft Collar, 5/8" i.d.	2
29	54-26035-8	Guide Pin	1
30	335-102-10	Screw, Socket Hd. #10-32 x 5/8	6
31	402-010	Washer, Lock #10	6
32	410-010	Washer, Flat #10	6
33	335-34-10	Screw, Socket Hd. 1/4-20 x 5/8	1
34	335-102-8	Screw, Socket Hd. #10-32 x 1/2	1
35	332-34-12	Screw, Flat Hd. 1/4-20 x 3/4	1
36	81-00002	Laser Diode Pointer	1
37	54-H0403-1	Pointer Mount	1
38	335-93-8	Screw, Socket Hd. #8-32 x 1/2	2
39	67-26071	Cover, Printer	1
40	333-93-4	Screw, Button Hd. #8-32 x 1/4	4

ITEM	PART NO.	DESCRIPTION	QTY.
41	54-26045-4	Printer Side Plate	1
42	54-26047-3	Printer Top Plate	1
43	54-26035-7	Guide Pin, Short	1
44	9060-005	Shaft Collar, 5/8" i.d.	2
45	11-1927	Spacer, 3/4"	4
46	31-26165-EC3	Printer Control Board	1
47	313-86-16	Screw, Round Hd. #6-32 x 1	4
48	9042-107	Bushing, Labeler Car Base	2
49	54-26041	Printer Car Base	1
50	9060-004	Shaft Collar, 1/2" i.d.	1
51	333-93-4	Screw, Button Hd. #8-32 x 1/4	2
52	54-26212	Skid Plate	1
53	335-93-8	Screw, Socket Hd. #8-32 x 1/2	2
54	332-102-8	Screw, Flat Hd. #10-32 x 1/8	4
55	54-26216	Quick Release Pin, Roller	1
56	9042-118	Bushing, 1/4" i.d.	4
57	54-26050	Roller Mounting Bracket	1
58	54-26049	Label Roller	1
59	54-26051	Roller/Cylinder Mount	1
60	54-26036	Peel Bar, Labeler	1
61	20C13-109	Screw, Binding Head #4-40 x 3/16	2
62	54-26046-3	Printer Mounting Plate	1
63	67-26060-1	Label Printer	1
64	335-77-6	Screw, Socket Hd. #3-48 x 3/8	3
65	67-26075-1	Rod Clevis	1
66	PM-125	Spacer, Black Nylon	2
67	67-26074	Down Cylinder, Labeler	1
68	100-13-3	5/32" Swivel Elbow	2
69	335-93-8	Screw, Socket Hd. #8-32 x 1/2	2
70	335-93-8	Screw, Socket Hd. #8-32 x 1/2	2
71	335-93-8	Screw, Socket Hd. #8-32 x 1/2	2
72	335-102-8	Screw, Socket Hd. #10-32 x 1/2	1
73	54-26037-2	Printer Car Stud	1
74	9060-021	Shaft Collar, .25 i.d.	1
75	54-26054	Cylinder Standoff, Labeler	1
76	91-26062	Decal, Printer Threading	1
77	402-060	Washer, Lock #6	4
78	9001-0001	Spacing Washer, Nylon	2

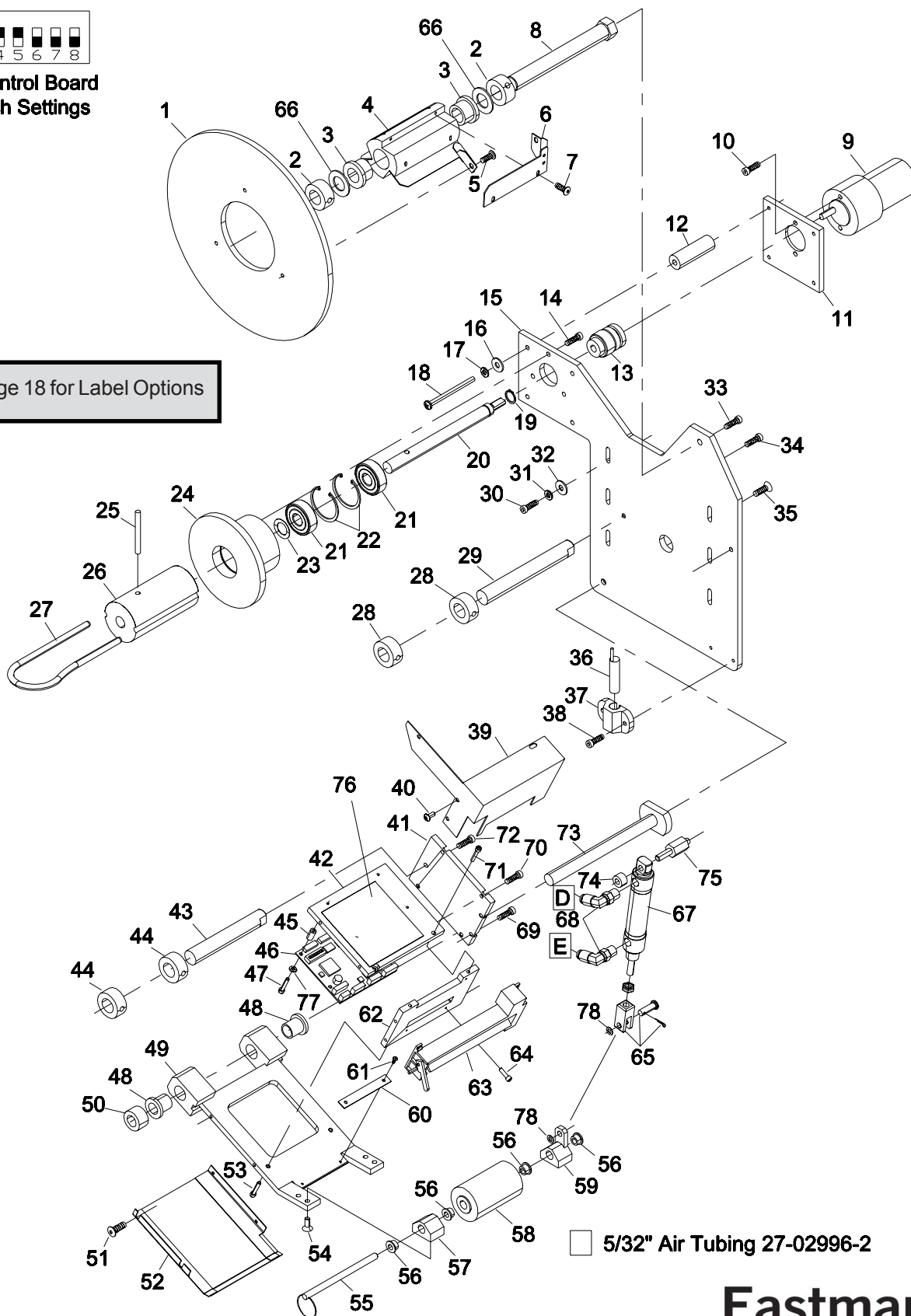
Please Specify machine voltage and complete serial number when ordering replacement parts.

Item numbers are for reference only. Please Specify PART NUMBER when ordering replacement parts.



**Printer Control Board  
Dip Switch Settings**

See page 18 for Label Options



**Eastman®**

*Over a Century of Cutting Expertise*

## 4" Labeler Head Assembly

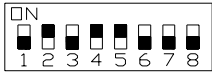
### 68-26069-4

ITEM	PART NO.	DESCRIPTION	QTY.
1	54-26053	Label Roll Stop Disc	1
2	9060-005	Shaft Collar, 5/8" i.d.	2
3	67-26110	Bushing, 5/8" i.d.	2
4	54-26026-4	Label Paper Hub, 4"	1
5	11-1978	Screw, Nylon #10-32 x 3/8	3
6	54-26027-4	Roll Adjust Bracket, 4"	3
7	333-86-6	Screw, Button Hd. #6-32 x 3/8	6
8	54-26033-4	Spool Stud, 4"	1
9	31-26181	Motor, Take-up, 24vdc	1
10	335-102-6	Screw, Socket Hd. #10-32 x 3/8	2
11	54-26223-4	Motor Mounting Plate, Labeler	1
12	54-26032	Standoff, Labeler Motor	4
13	54-26034-2	Take up Clutch	1
14	335-102-8	Screw, Socket Hd. #10-32 x 1/2	3
15	54-26042-4	Back Plate, Labeler, 4"	1
16	410-010	Washer, Flat #10	4
17	402-010	Washer, Lock #10	4
18	320-102-32	Screw, Binding Hd. #10-32 x 2	4
19	632-32	Retaining Ring, .50 External	1
20	54-26038-4	Take Up Spool Shaft, 4"	1
21	9020-0203	Bearing, .50 i.d.	2
22	631-88	Retaining Ring, 1.5 Internal	2
23	65-26018	Spring Washer, .50 i.d.	1
24	54-26362	Bearing Block Stop, 4"	1
25	511-6-28	Roll Pin, .187 x 1.75 Long	1
26	54-26030-4	Take Up Spool, 4"	1
27	54-26031-4	Spring Clip, Label Wrap, 4"	1
28	9060-005	Shaft Collar, 5/8" i.d.	2
29	54-26035-6	Guide Pin, Long, 4"	1
30	335-102-10	Screw, Socket Hd. #10-32 x 5/8	6
31	402-010	Washer, Lock #10	6
32	410-010	Washer, Flat #10	6
33	335-34-10	Screw, Socket Hd. 1/4-20 x 5/8	1
34	335-102-8	Screw, Socket Hd. #10-32 x 1/2	1
35	335-34-12	Screw, Socket Hd. 1/4-20 x 3/4	1
36	81-00002	Laser Diode Pointer	1
37	54-H0403-1	Pointer Mount	1
38	335-93-8	Screw, Socket Hd. #8-32 x 1/2	2
39	67-26071-4	Cover, Printer, 4"	1
40	333-93-4	Screw, Button Hd. #8-32 x 1/4	4

ITEM	PART NO.	DESCRIPTION	QTY.
41	54-26045-4	Printer Side Plate	1
42	54-26047-4	Printer Top Plate, 4"	1
43	54-26035-5	Guide Pin, Short, 4"	1
44	9060-005	Shaft Collar, 5/8" i.d.	2
45	11-1927	Spacer, 3/4"	4
46	31-26165-EC3	Printer Control Board	1
47	313-86-16	Screw, Round Hd. #6-32 x 1	4
48	9042-107	Bushing, Labeler Car Base	2
49	54-26041-4	Printer Car Base, 4"	1
50	9060-004	Shaft Collar, 1/2" i.d.	1
51	333-93-4	Screw, Button Hd. #8-32 x 1/4	2
52	54-26212-4	Skid Plate, 4"	1
53	335-93-8	Screw, Socket Hd. #8-32 x 1/2	2
54	332-102-8	Screw, Flat Hd. #10-32 x 1/8	4
55	67-26171-4	Quick Release Pin, Roller, 4"	1
56	9042-118	Bushing, 1/4" i.d.	4
57	54-26050	Roller Mounting Bracket	1
58	54-26049-4	Label Roller, 4"	1
59	54-26051	Roller/Cylinder Mount	1
60	54-26036-4	Peel Bar, Labeler, 4"	1
61	20C13-109	Screw, Binding Head #4-40 x 3/16	2
62	54-26046-4	Printer Mounting Plate, 4"	1
63	67-26060-4	Label Printer, 4"	1
64	335-77-6	Screw, Socket Hd. #3-48 x 3/8	3
65	67-26075-1	Rod Clevis	1
66	PM-125	Spacer, Black Nylon	2
67	67-26074	Down Cylinder, Labeler	1
68	100-13-3	5/32" Swivel Elbow	2
69	335-93-8	Screw, Socket Hd. #8-32 x 1/2	2
70	335-93-8	Screw, Socket Hd. #8-32 x 1/2	2
71	335-93-8	Screw, Socket Hd. #8-32 x 1/2	2
72	335-102-8	Screw, Socket Hd. #10-32 x 1/2	1
73	54-26037-4	Printer Car Stud, 4"	1
74	9060-021	Shaft Collar, .25 i.d.	1
75	54-26054	Cylinder Standoff, Labeler	1
76	91-26062-1	Decal, Printer Threading	1
77	402-060	Washer, Lock #6	4
78	9001-0001	Spacing Washer, Nylon	2
79	335-81-8S	Screw, Socket Hd. #4-40 x 1/2	2
80	335-86-10	Screw, Socket Hd. #6-32 x 5/8	4
81	54-26478	Mounting Bracket, Label Path Deflector	1
82	54-26427	Label Path Deflector	1

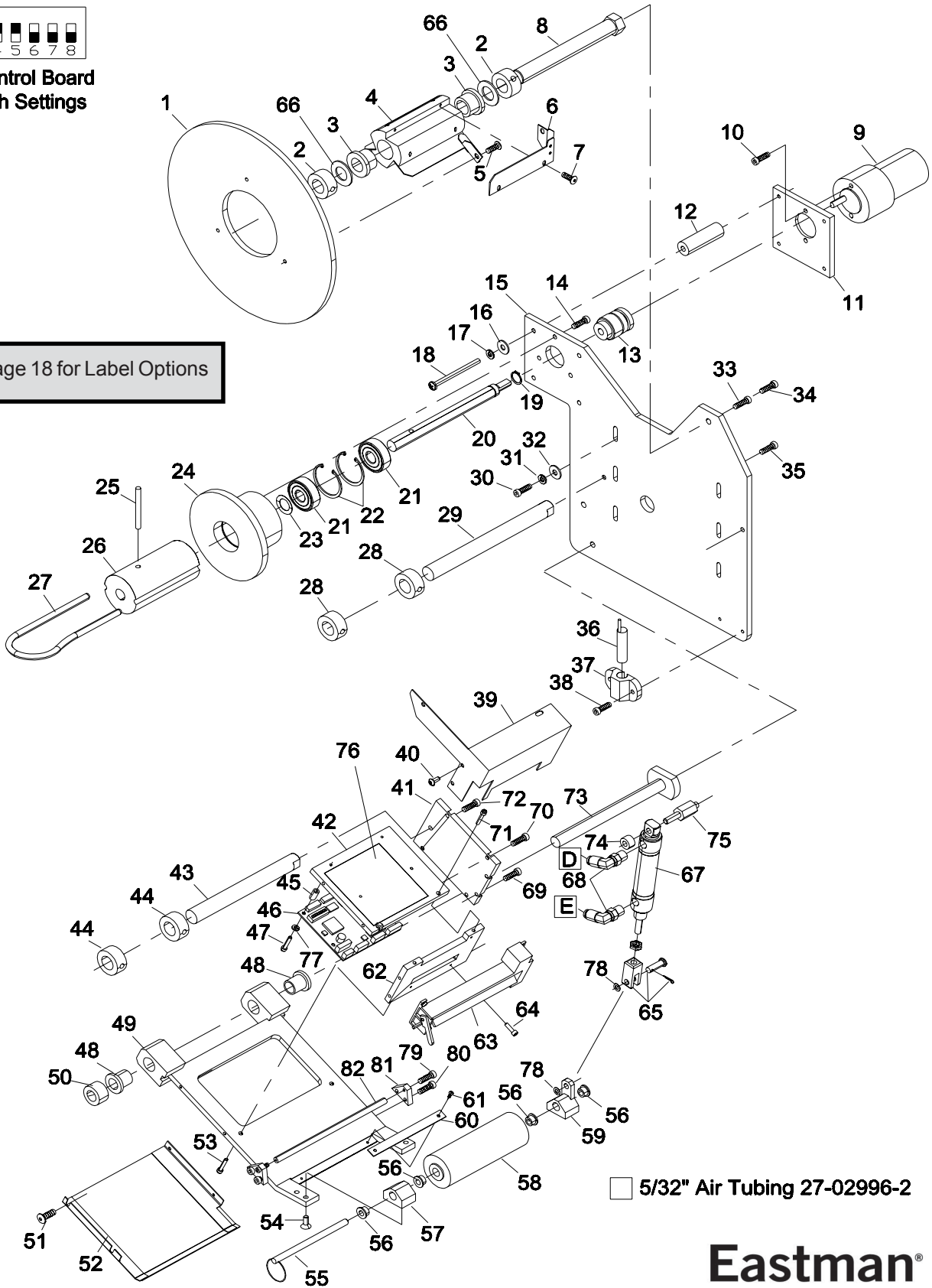
Please Specify machine voltage and complete serial number when ordering replacement parts.

Item numbers are for reference only.  
Please Specify PART NUMBER when ordering replacement parts.



**Printer Control Board  
Dip Switch Settings**

See page 18 for Label Options



**Eastman®**

*Over a Century of Cutting Expertise*

## ***2" Labeler Head Assembly with Fiber Option***

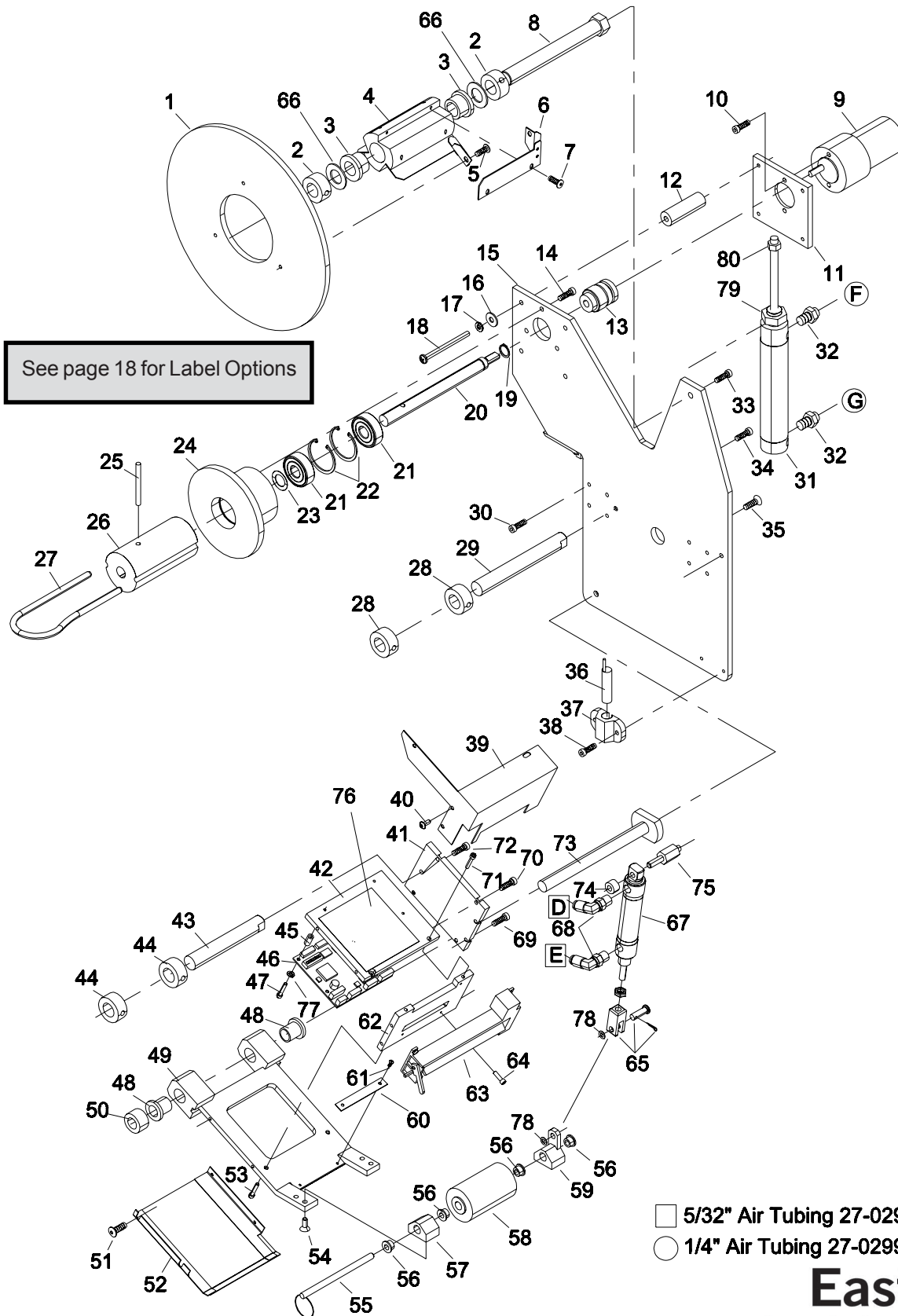
### **68-26069-1FC**

ITEM	PART NO.	DESCRIPTION	QTY.
1	54-26053	Label Roll Stop Disc	1
2	9060-005	Shaft Collar, 5/8" i.d.	2
3	67-26110	Bushing, 5/8" i.d.	2
4	54-26026	Label Paper Hub	1
5	11-1978	Screw, Nylon #10-32 x 3/8	3
6	54-26027	Roll Adjust Bracket	3
7	333-86-6	Screw, Button Hd. #6-32 x 3/8	6
8	54-26033-2	Spool Stud	1
9	31-26181	Motor, Take-up, 24vdc	1
10	335-102-6	Screw, Socket Hd. #10-32 x 3/8	2
11	54-26223-4	Motor Mounting Plate, Labeler	1
12	54-26032	Standoff, Labeler Motor	4
13	54-26034-2	Take up Clutch	1
14	335-102-8	Screw, Socket Hd. #10-32 x 1/2	3
15	54-26042-3FC	Back Plate, FC Labeler	1
16	410-010	Washer, Flat #10	4
17	402-010	Washer, Lock #10	4
18	320-102-32	Screw, Binding Hd. #10-32 x 2	4
19	632-32	Retaining Ring, .50 External	1
20	54-26038-2	Take Up Spool Shaft	1
21	9020-0203	Bearing, .50 i.d.	2
22	631-88	Retaining Ring, 1.5 Internal	2
23	65-26018	Spring Washer, .50 i.d.	1
24	54-26362-2	Bearing Block Stop	1
25	511-6-28	Roll Pin, .187 x 1.75 Long	1
26	54-26030-2	Take Up Spool	1
27	54-26031-2	Spring Clip, Label Wrap	1
28	9060-005	Shaft Collar, 5/8" i.d.	2
29	54-26035-8	Guide Pin	1
30	341-4-12	Screw, Socket Hd. 4m x 12mm	8
31	54-26151	Air Cylinder, FC Labeler	1
32	100-11-2	1/4" npt Fitting, 1/4" Push on	2
33	335-34-10	Screw, Socket Hd. 1/4-20 x 5/8	1
34	335-102-8	Screw, Socket Hd. #10-32 x 1/2	1
35	332-34-12	Screw, Flat Hd. 1/4-20 x 3/4	1
36	81-00002	Laser Diode Pointer	1
37	54-H0403-1	Pointer Mount	1
38	335-93-8	Screw, Socket Hd. #8-32 x 1/2	2
39	67-26071	Cover, Printer	1
40	333-93-4	Screw, Button Hd. #8-32 x 1/4	4

ITEM	PART NO.	DESCRIPTION	QTY.
41	54-26045-4	Printer Side Plate	1
42	54-26047-3	Printer Top Plate	1
43	54-26035-7	Guide Pin, Short	1
44	9060-005	Shaft Collar, 5/8" i.d.	2
45	11-1927	Spacer, 3/4"	4
46	31-26165-EC3	Printer Control Board	1
47	313-86-16	Screw, Round Hd. #6-32 x 1	4
48	9042-107	Bushing, Labeler Car Base	2
49	54-26041	Printer Car Base	1
50	9060-004	Shaft Collar, 1/2" i.d.	1
51	333-93-4	Screw, Button Hd. #8-32 x 1/4	2
52	54-26212	Skid Plate	1
53	335-93-8	Screw, Socket Hd. #8-32 x 1/2	2
54	332-102-8	Screw, Flat Hd. #10-32 x 1/8	4
55	54-26216	Quick Release Pin, Roller	1
56	9042-118	Bushing, 1/4" i.d.	4
57	54-26050	Roller Mounting Bracket	1
58	54-26049	Label Roller	1
59	54-26051	Roller/Cylinder Mount	1
60	54-26036	Peel Bar, Labeler	1
61	20C13-109	Screw, Binding Head #4-40 x 3/16	2
62	54-26046-3	Printer Mounting Plate	1
63	67-26060-1	Label Printer	1
64	335-77-6	Screw, Socket Hd. #3-48 x 3/8	3
65	67-26075-1	Rod Clevis	1
66	PM-125	Spacer, Black Nylon	2
67	67-26074	Down Cylinder, Labeler	1
68	100-13-3	5/32" Swivel Elbow	2
69	335-93-8	Screw, Socket Hd. #8-32 x 1/2	2
70	335-93-8	Screw, Socket Hd. #8-32 x 1/2	2
71	335-93-8	Screw, Socket Hd. #8-32 x 1/2	2
72	335-102-8	Screw, Socket Hd. #10-32 x 1/2	1
73	54-26037-2	Printer Car Stud	1
74	9060-021	Shaft Collar, .25 i.d.	1
75	54-26054	Cylinder Standoff, Labeler	1
76	91-26062	Decal, Printer Threading	1
77	402-060	Washer, Lock #6	4
78	9001-0001	Spacing Washer, Nylon	2
79	54-26152	Jam Nut, 5/8-18	1
80	203-37	Jam Nut, 5/16-24	1

Please Specify machine voltage and complete serial number when ordering replacement parts.

Item numbers are for reference only.  
Please Specify PART NUMBER when ordering replacement parts.



**Eastman®**

*Over a Century of Cutting Expertise*

## 4" Labeler Head Assembly with Fiber Option

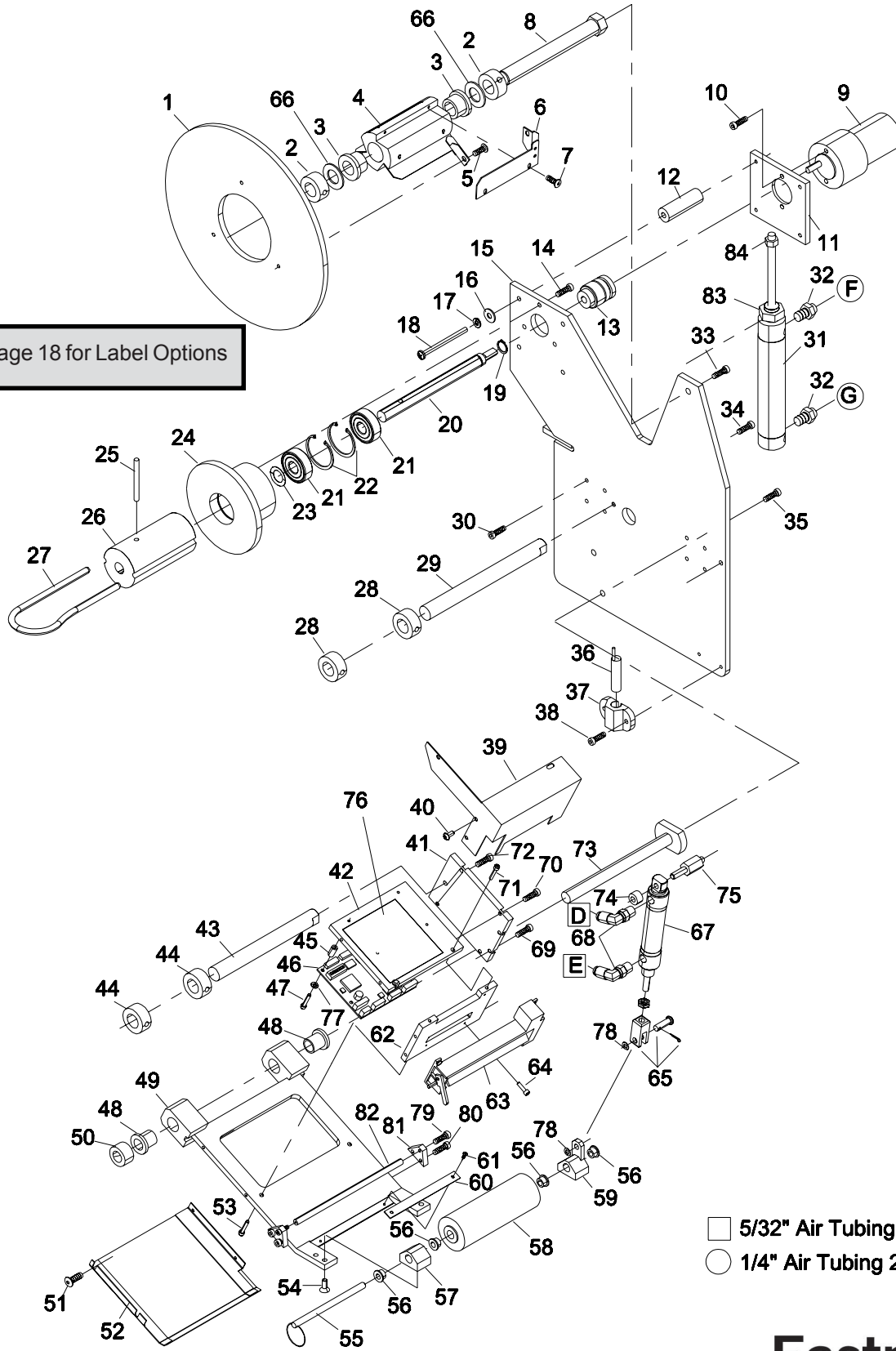
### 68-26069-4FC

ITEM	PART NO.	DESCRIPTION	QTY.
1	54-26053	Label Roll Stop Disc	1
2	9060-005	Shaft Collar, 5/8" i.d.	2
3	67-26110	Bushing, 5/8" i.d.	2
4	54-26026-4	Label Paper Hub, 4"	1
5	11-1978	Screw, Nylon #10-32 x 3/8	3
6	54-26027-4	Roll Adjust Bracket, 4"	3
7	333-86-6	Screw, Button Hd. #6-32 x 3/8	6
8	54-26033-4	Spool Stud, 4"	1
9	31-26181	Motor, Take-up, 24vdc	1
10	335-102-6	Screw, Socket Hd. #10-32 x 3/8	2
11	54-26223-4	Motor Mounting Plate, Labeler	1
12	54-26032	Standoff, Labeler Motor	4
13	54-26034-2	Take up Clutch	1
14	335-102-8	Screw, Socket Hd. #10-32 x 1/2	3
15	54-26042-4FC	Back Plate, Labeler, 4" FC	1
16	410-010	Washer, Flat #10	4
17	402-010	Washer, Lock #10	4
18	320-102-32	Screw, Binding Hd. #10-32 x 2	4
19	632-32	Retaining Ring, .50 External	1
20	54-26038-4	Take Up Spool Shaft, 4"	1
21	9020-0203	Bearing, .50 i.d.	2
22	631-88	Retaining Ring, 1.5 Internal	2
23	65-26018	Spring Washer, .50 i.d.	1
24	54-26362	Bearing Block Stop, 4"	1
25	511-6-28	Roll Pin, .187 x 1.75 Long	1
26	54-26030-4	Take Up Spool, 4"	1
27	54-26031-4	Spring Clip, Label Wrap, 4"	1
28	9060-005	Shaft Collar, 5/8" i.d.	2
29	54-26035-6	Guide Pin, Long, 4"	1
30	341-4-12	Screw, Socket Hd. 4m x 12mm	8
31	54-26151	Air Cylinder, FC Labeler	1
32	100-11-2	1/4" npt Fitting, 1/4" Push on	2
33	335-34-10	Screw, Socket Hd. 1/4-20 x 5/8	1
34	335-102-8	Screw, Socket Hd. #10-32 x 1/2	1
35	335-34-12	Screw, Socket Hd. 1/4-20 x 3/4	1
36	81-00002	Laser Diode Pointer	1
37	54-H0403-1	Pointer Mount	1
38	335-93-8	Screw, Socket Hd. #8-32 x 1/2	2
39	67-26071-4	Cover, Printer, 4"	1
40	333-93-4	Screw, Button Hd. #8-32 x 1/4	4

ITEM	PART NO.	DESCRIPTION	QTY.
41	54-26045-4	Printer Side Plate	1
42	54-26047-4	Printer Top Plate, 4"	1
43	54-26035-5	Guide Pin, Short, 4"	1
44	9060-005	Shaft Collar, 5/8" i.d.	2
45	11-1927	Spacer, 3/4"	4
46	31-26165-EC3	Printer Control Board	1
47	313-86-16	Screw, Round Hd. #6-32 x 1	4
48	9042-107	Bushing, Labeler Car Base	2
49	54-26041-4	Printer Car Base, 4"	1
50	9060-004	Shaft Collar, 1/2" i.d.	1
51	333-93-4	Screw, Button Hd. #8-32 x 1/4	2
52	54-26212-4	Skid Plate, 4"	1
53	335-93-8	Screw, Socket Hd. #8-32 x 1/2	2
54	332-102-8	Screw, Flat Hd. #10-32 x 1/8	4
55	67-26171-4	Quick Release Pin, Roller, 4"	1
56	9042-118	Bushing, 1/4" i.d.	4
57	54-26050	Roller Mounting Bracket	1
58	54-26049-4	Label Roller, 4"	1
59	54-26051	Roller/Cylinder Mount	1
60	54-26036-4	Peel Bar, Labeler, 4"	1
61	20C13-109	Screw, Binding Head #4-40 x 3/16	2
62	54-26046-4	Printer Mounting Plate, 4"	1
63	67-26060-4	Label Printer, 4"	1
64	335-77-6	Screw, Socket Hd. #3-48 x 3/8	3
65	67-26075-1	Rod Clevis	1
66	PM-125	Spacer, Black Nylon	2
67	67-26074	Down Cylinder, Labeler	1
68	100-13-3	5/32" Swivel Elbow	2
69	335-93-8	Screw, Socket Hd. #8-32 x 1/2	2
70	335-93-8	Screw, Socket Hd. #8-32 x 1/2	2
71	335-93-8	Screw, Socket Hd. #8-32 x 1/2	2
72	335-102-8	Screw, Socket Hd. #10-32 x 1/2	1
73	54-26037-4	Printer Car Stud, 4"	1
74	9060-021	Shaft Collar, .25 i.d.	1
75	54-26054	Cylinder Standoff, Labeler	1
76	91-26062-1	Decal, Printer Threading	1
77	402-060	Washer, Lock #6	4
78	9001-0001	Spacing Washer, Nylon	2
79	335-81-8S	Screw, Socket Hd. #4-40 x 1/2	2
80	335-86-10	Screw, Socket Hd. #6-32 x 5/8	4
81	54-26478	Mounting Bracket, Label Path Deflector	1
82	54-26427	Label Path Deflector	1
83	54-26152	Jam Nut, 5/8-18	1
84	203-37	Jam Nut, 5/16-24	1

Please Specify machine voltage and complete serial number when ordering replacement parts.

See page 18 for Label Options



□ 5/32" Air Tubing 27-02996-2  
○ 1/4" Air Tubing 27-02996-1

**Eastman®**

*Over a Century of Cutting Expertise*

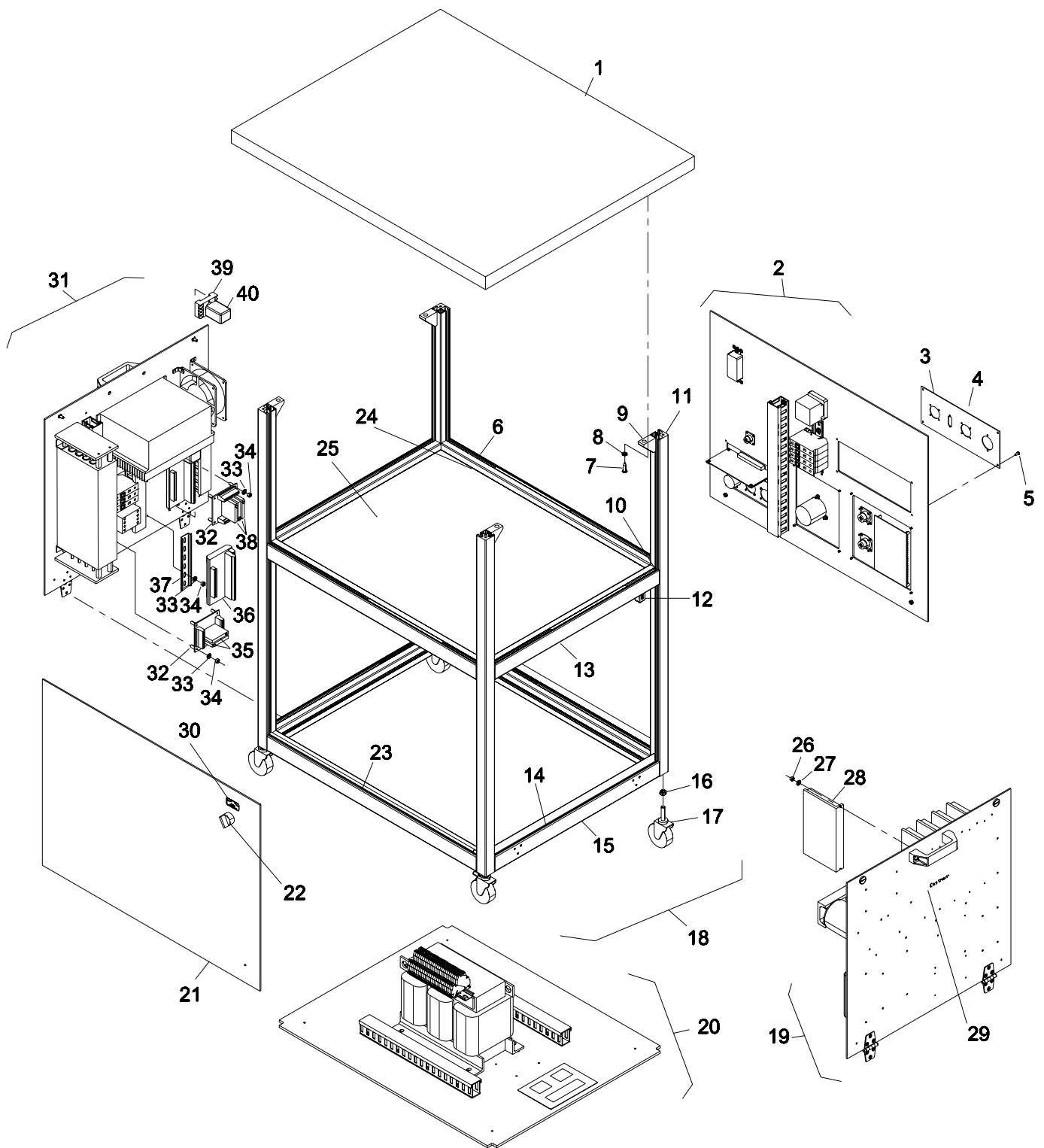
# Labeler Diagnostic Cabinet

## 31-S3286-LBL

ITEM	PART NO.	DESCRIPTION	QTY.	ITEM	PART No.	DESCRIPTION	QTY
1	54-26504	Cabinet Top	1	22	31-26331	Switch, Green Selector	1
2	68-26096-2	Rear Panel Ass'y (220v/3ph)	1	23	67-26378	Panel Seal	35
3	54-26875-1	Labeler Panel	1	24	67-26381	Panel Side Cover	3
4	91-26049	Decal, Labeler Panel	1	25	54-26510	Top Panel, Static	1
5	333-93-6	Screw, #8-32 x 3/8	4	26	203-86	Nut, Hex #6-32	2
6	54-26499-28	28" Cross Member	4	27	402-060	Washer, Lock #6	
7	368-14-16	Self Tap Pan HD. #14	4	28	31-03012-2	Servo Amp, Labeler	1
8	402-34	Washer, Lock 1/4	4	29	91-26002-W	Decal, Small Logo	2
9	67-26380	Angle Mounting Bracket	4	30	91-26033	Decal Sheet, Complete Set	1
10	67-26382	Panel Fastener	16	31	68-26095-2	Conveyor E-Plate Assembly	1
11	54-26509-39	36" Up-right Member	4	32	31-00900-1	Opto 22 Board, Universal	2
12	67-26377	Door Fastening Block	4	33	402-060	Washer, Lock #6	8
13	54-26499-22	22" Cross Member	2	34	203-86	Nut, Hex #6-32	8
14	67-26379	Sealing Lip, Door	15	35	31-00906	Opto Output Module	2
15	54-26538	Hinge Cross Member	2	36	31-12986	Screw Terminal, STC-50W	1
16	206-38	Nux, Hex 3/8	4	37	31-00739	8" Din Mounting Rail	1
17	67-26384	Swivel Caster	4	38	31-00903	Opto Input Module	3
18	68-26108	Frame Assembly, Cabinet	1	39	31-00818	Relay Socket	1
19	68-26094	Static Gantry E-Plate Assembly	1	40	31-00819	Relay, dpdt 12vdc 8pin	1
20	68-26105-2	Conveyor, Bottom Panel Ass'y	1				
21	54-26508	Front Panel, Static	1				

Please Specify machine voltage and complete serial number when ordering replacement parts.

Item numbers are for reference only.  
Please Specify PART NUMBER when ordering replacement parts.

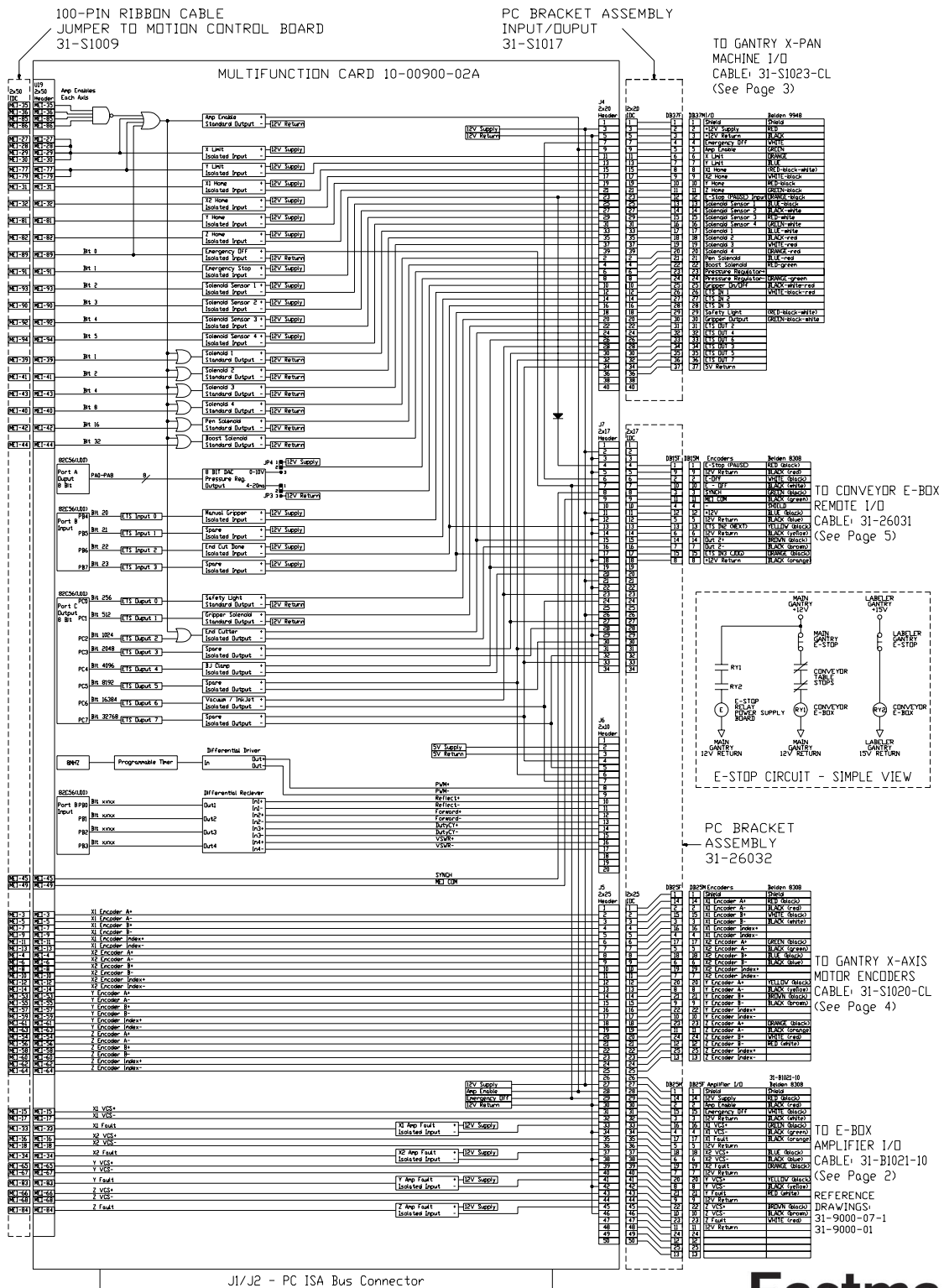


**Eastman®**

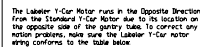
*Over a Century of Cutting Expertise*



MULTIFUNCTION BOARD ASSEMBLY SCHEMATIC/WIRING.  
THIS BOARD IS MOUNTED INSIDE THE PC ASSEMBLY  
FOR DETAILED SCHEMATIC OF MULTIFUNCTION CARD,  
REFER TO SCHEMATIC: 10-00900-02



Wiring Diagram Blue Print  
No. (31-9000-13, 1 of 7)



**Wiring Diagram Blue Print  
No. (31-9000-13, 2 of 7)**

TO 110V AC  
31-B1013-CL

TO PC SERIAL  
PORT  
31-S1005-CL

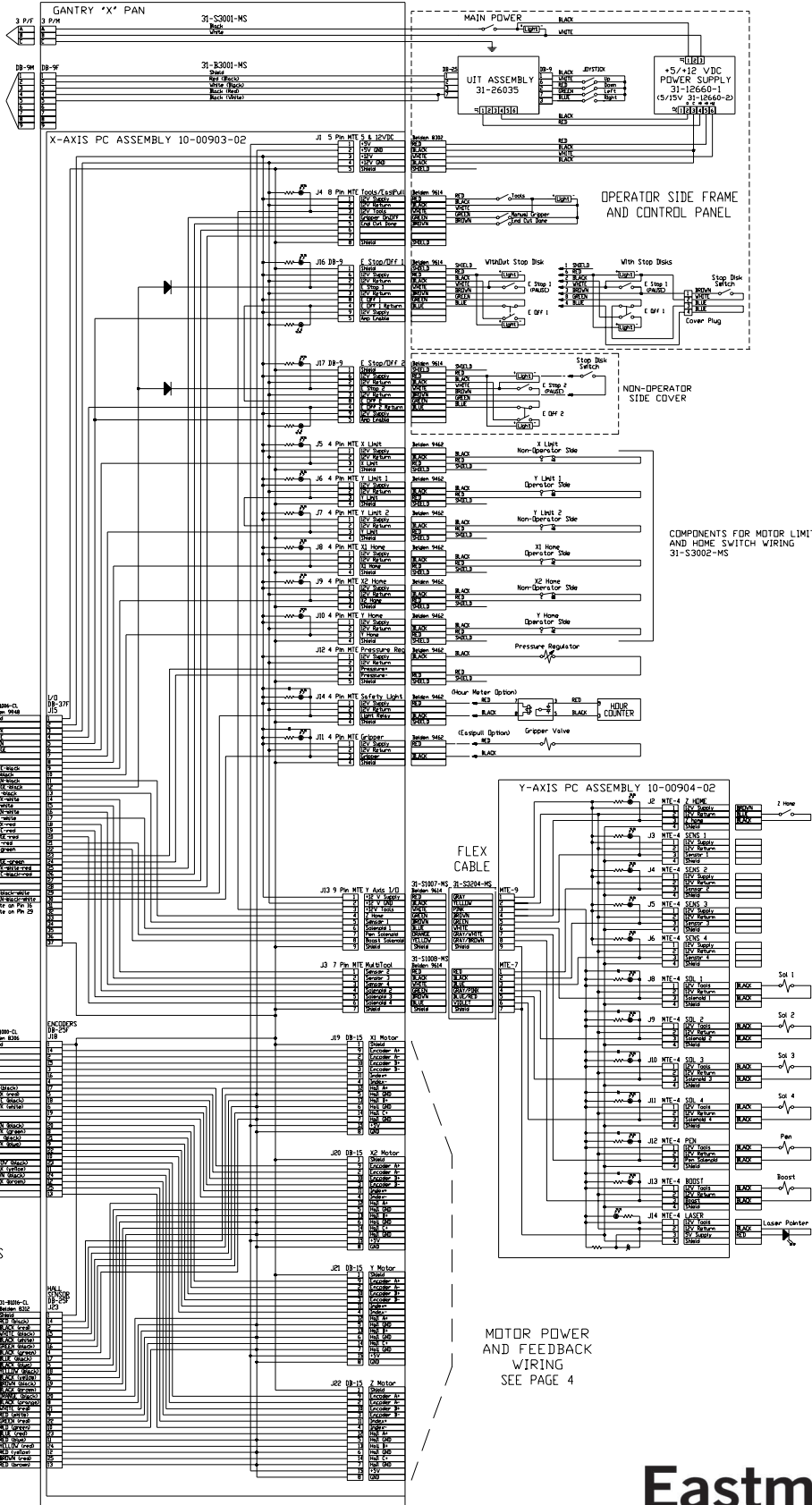
TO PC  
MACHINE I/O  
CABLE: 31-S1023-CL  
(See Page 1)

TO PC  
MOTOR ENCODERS  
CABLE: 31-S1020-CL  
(See Page 1)

TO E-BOX  
MOTOR HALL SENSORS  
CABLE: 31-B1016-CL  
(See Page 2)

REFERENCE  
DRAWINGS:  
31-9000-07-1  
31-9000-01

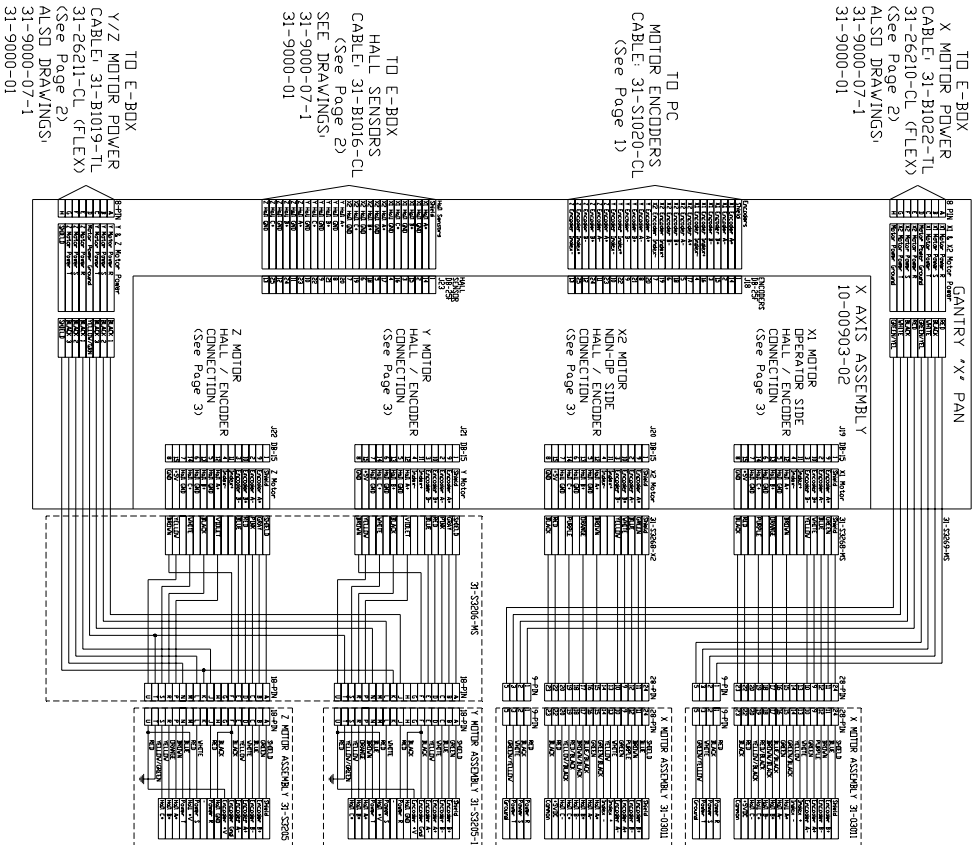
Encoder	Motor	Encoder	Motor
1 Encoder 1	31-9000-01	1 Encoder 1	31-9000-01
2 Encoder 2	31-9000-01	2 Encoder 2	31-9000-01
3 Encoder 3	31-9000-01	3 Encoder 3	31-9000-01
4 Encoder 4	31-9000-01	4 Encoder 4	31-9000-01
5 Encoder 5	31-9000-01	5 Encoder 5	31-9000-01
6 Encoder 6	31-9000-01	6 Encoder 6	31-9000-01
7 Encoder 7	31-9000-01	7 Encoder 7	31-9000-01
8 Encoder 8	31-9000-01	8 Encoder 8	31-9000-01
9 Encoder 9	31-9000-01	9 Encoder 9	31-9000-01
10 Encoder 10	31-9000-01	10 Encoder 10	31-9000-01
11 Encoder 11	31-9000-01	11 Encoder 11	31-9000-01
12 Encoder 12	31-9000-01	12 Encoder 12	31-9000-01
13 Encoder 13	31-9000-01	13 Encoder 13	31-9000-01
14 Encoder 14	31-9000-01	14 Encoder 14	31-9000-01
15 Encoder 15	31-9000-01	15 Encoder 15	31-9000-01
16 Encoder 16	31-9000-01	16 Encoder 16	31-9000-01
17 Encoder 17	31-9000-01	17 Encoder 17	31-9000-01
18 Encoder 18	31-9000-01	18 Encoder 18	31-9000-01
19 Encoder 19	31-9000-01	19 Encoder 19	31-9000-01
20 Encoder 20	31-9000-01	20 Encoder 20	31-9000-01
21 Encoder 21	31-9000-01	21 Encoder 21	31-9000-01
22 Encoder 22	31-9000-01	22 Encoder 22	31-9000-01
23 Encoder 23	31-9000-01	23 Encoder 23	31-9000-01
24 Encoder 24	31-9000-01	24 Encoder 24	31-9000-01
25 Encoder 25	31-9000-01	25 Encoder 25	31-9000-01
26 Encoder 26	31-9000-01	26 Encoder 26	31-9000-01
27 Encoder 27	31-9000-01	27 Encoder 27	31-9000-01
28 Encoder 28	31-9000-01	28 Encoder 28	31-9000-01
29 Encoder 29	31-9000-01	29 Encoder 29	31-9000-01
30 Encoder 30	31-9000-01	30 Encoder 30	31-9000-01



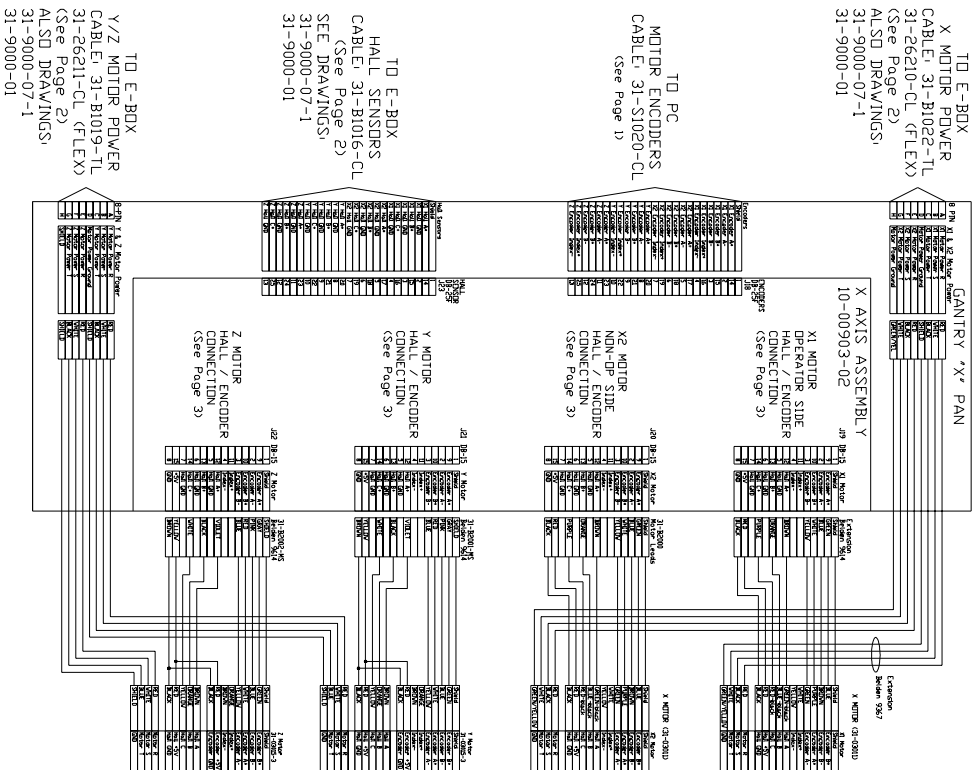
MOTOR POWER  
AND FEEDBACK  
WIRING  
SEE PAGE 4

**Eastman®**  
Over a Century of Cutting Expertise

FLEX CABLE / CONNECTOR VERSIONS

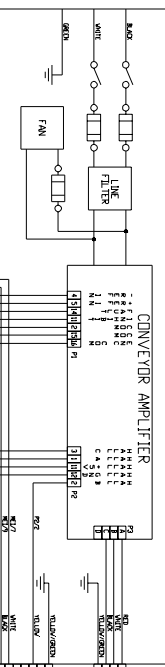


HARD-WIRED VERSIONS



Wiring Diagram Blue Print  
No. (31-9000-13, 4 of 7)

AC POWER IN



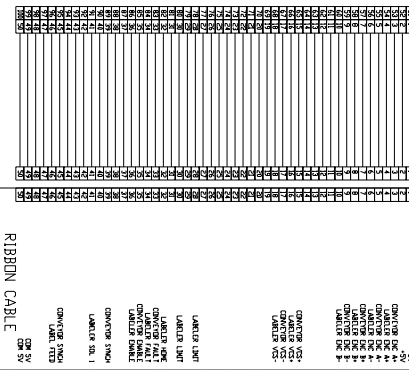
TO CONVEYOR MOTOR  
MOTOR POWER  
CABLE: 31-26029-MD

CONVEYOR MOTOR  
31-26125

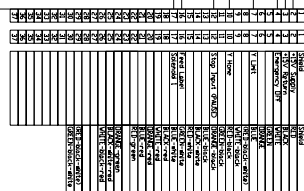
TO CONVEYOR MOTOR  
HALL/ENCODER  
CABLE: 31-26030-MD

CONVEYOR MOTOR  
31-26125

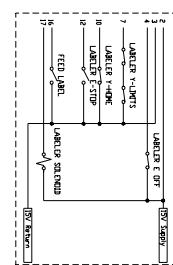
TO COMPUTER  
MEI BOARD 2  
CABLE: 31-S3203



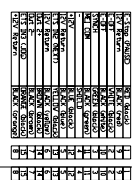
TO LABELER GANTRY  
LABELER I/O  
CABLE: 31-S023-40  
(See Page 6)



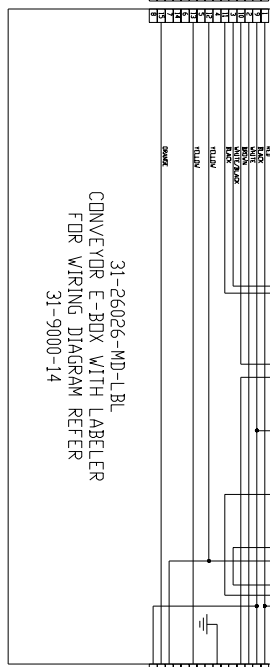
TO LABELER GANTRY  
LABELER I/O  
CABLE: 31-S023-40  
(See Page 6)



TO PC  
REMOTE I/O  
CABLE: 31-26031  
(See Page 1)

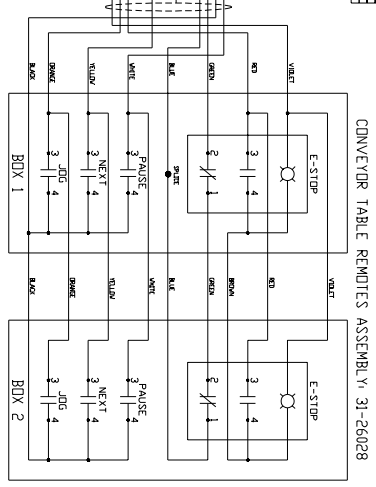


31-26026-MD-LBL  
CONVEYOR E-BOX WITH LABELER  
FOR WIRING DIAGRAM REFER  
31-9000-14



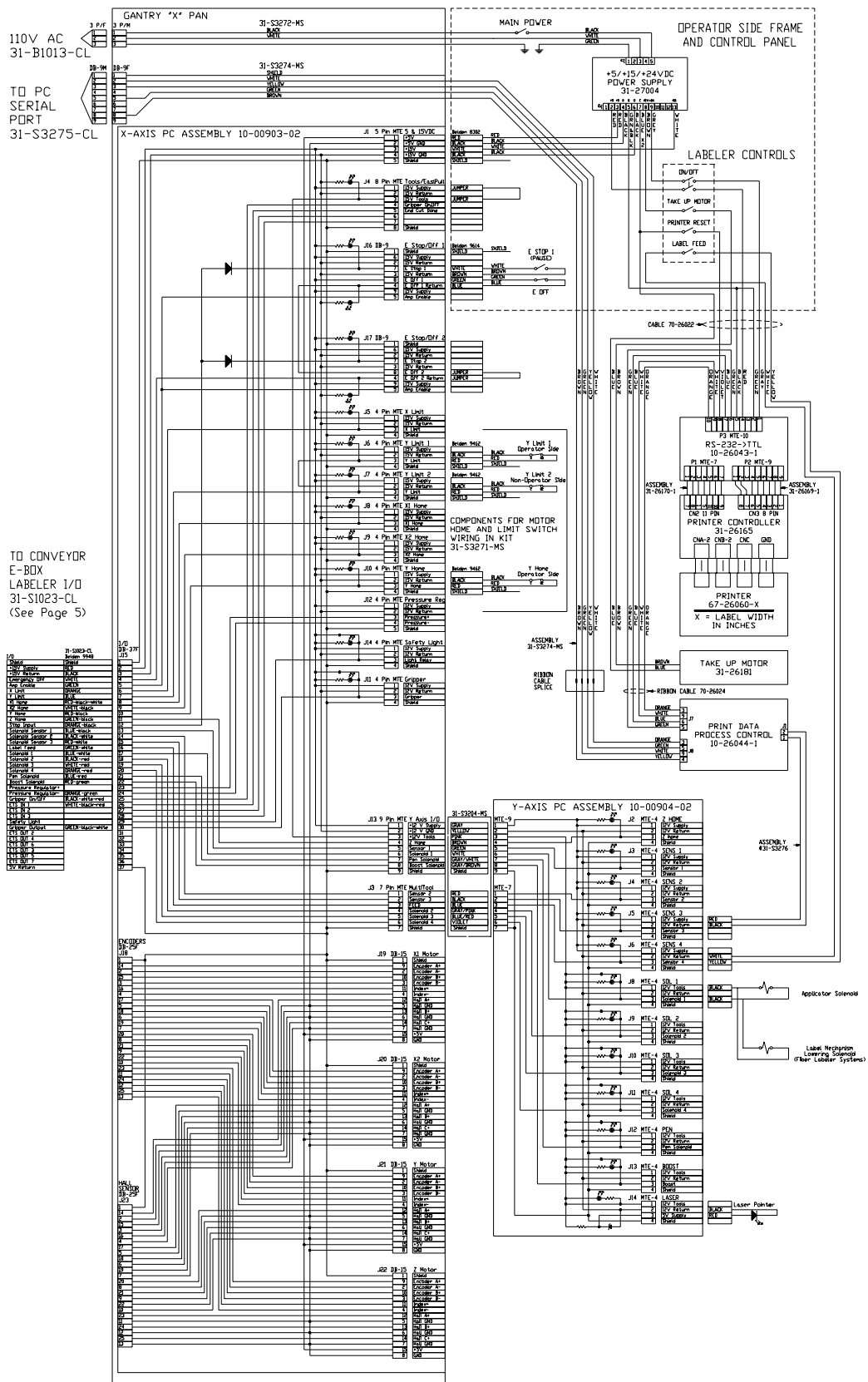
Conveyor Speed Related Numbers

E-BOX ASSEMBLY (WITH LABELER)	31-26026	31-26026-MD	31-26026-MD-LBL	31-26026-MD-LBL
CONVEYOR MOTOR	31-26029	31-26029	31-26029	31-26029
POWER CABLE	31-26029	31-26029	31-26029	31-26029
ENCODER CABLE	31-26030	31-26030	31-26030	31-26030



**Eastman®**  
Over a Century of Cutting Expertise

**Wiring Diagram Blue Print**  
**No. (31-9000-13, 5 of 7)**

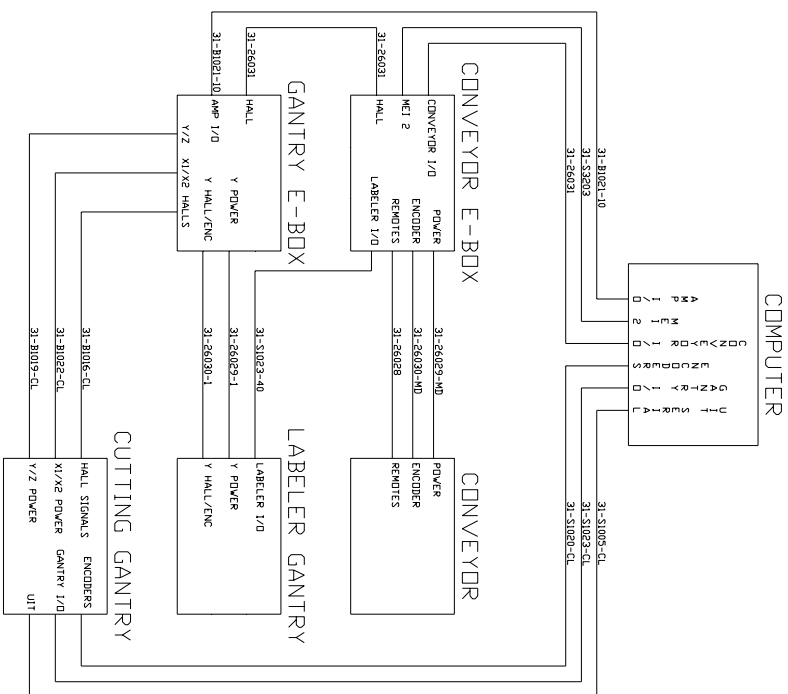


Wiring Diagram Blue Print  
No. (31-9000-13, 6 of 7)

LABELER GANTRY "X" PAN

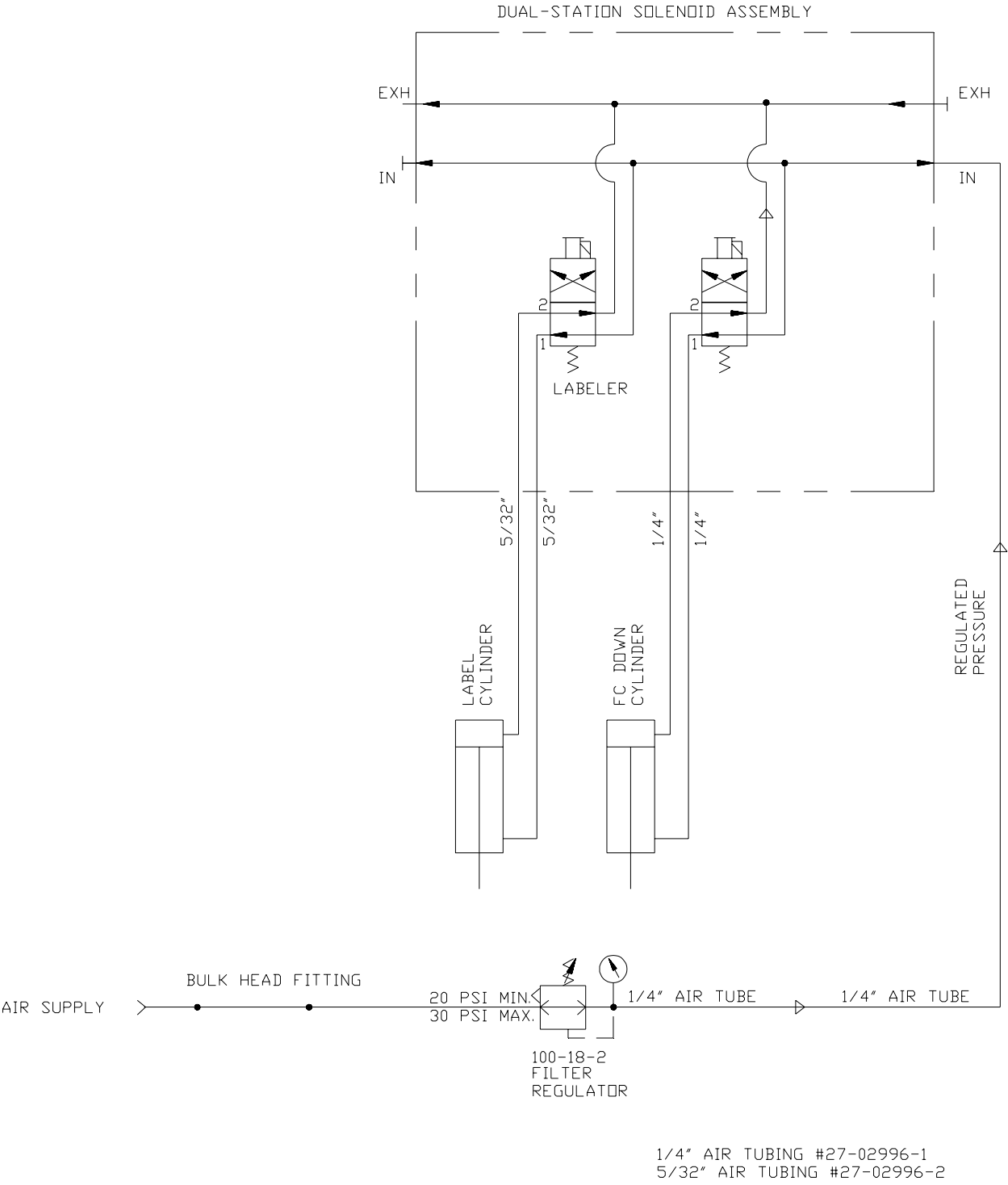


## COMPUTER



*Over a Century of Cutting Expertise*

Form E-533



Pneumatic Diagram Print  
No. 31-9000-28

# Trouble Shooting Guide

Machine Serial No.: \_\_\_\_\_  
 Machine Voltage: \_\_\_\_\_  
 Date of Purchase: \_\_\_\_\_

Problem	Solution
Labels skew when passing thru the printer	a) Check label path for proper alignment. Adjust collars as required. b) Check peel bar for squareness. Adjust peel bar as required.
Label Feed Button does not advance labels	a) Check if motors are enabled. Enable motors on gantry if required. b) Labeler disabled. Press labeler reset to enable labeler. c) Labels starting location not positioned properly. Lift printer lever and manually advance label 1/8" . Release lever.
Labeler Take-up Roller not rotating	a) Take-up Roller On/Off button in off position. Press button to on position.
Labels stick when passing thru printer	a) Check label path for proper alignment. Adjust collars as required. b) Check peel bar for squareness. Adjust peel bar as required.
Text not printing in center of label	a) Check distance from side of label. Increase/decrease left margin distance using Labeler.exe program (Plotter.LBL file). b) Check distance of black index bar on back of label (11/32"). Replace labels if required. c) Check distance from top of label. Adjust feed distance using Labeler.exe program (Plotter.LBL file).
Label fold under when applying label	a) Check feed distance. Decrease feed distance using Labeler.exe program (Plotter.LBL file). b) Check Print Velocity. Increase/decrease Velocity using Easicut, Machine Options: Labeler screen. Send plot file to gantry when complete.
Label feed not consistent	a) Check distance of black index bar on back of label (11/32"). Replace labels if required. b) Check machine setting, Labeler tab for proper label size selection. Adjust selection as required. c) Check printer head sensor background. Back ground must be white. Apply white label to back ground.

**Eastman®**

*Over a Century of Cutting Expertise*

# TECHNICAL DATA

## Eagle EasiLabel System

Patent Pending

**Eagle EasiLabel System**

Maximum Labeling Speed*	15 Labels/Minute
Maximum Labeling Ply Height	1/2" (3 mm)
Label Accuracy*	+/- 1/4" (+/- 6 mm)
Machine Weight	Approx. 200 lbs. (90 kg)
Operating Voltage	110V/220V; 50/60 cycles
	110V/220V; 50/60 HZ
Power Requirement	110V/15A
	220V/8A
Minimum Operating Pressure	20 PSI
Volume of Air Service	10 SCFM

\* Relative to the type and quality of fabric, Label Locations, Label Sizes, Conveyor Speed, etc.

Machine Size	Working Width	Conveyor Belt Width	Overall Machine Width
66" (1680 mm)	66" (1680 mm)	74" (1880 mm)	103" (2616 mm)
72" (1830 mm)	72" (1830 mm)	80" (2032 mm)	109" (2769 mm)
78" (1980 mm)	78" (1980 mm)	86" (2184 mm)	115" (2845 mm)
96" (2440 mm)	96" (2440 mm)	104" (2642 mm)	133" (3378 mm)

\* For all other sizes consult factory

**Limited Warranty.** Eastman warrants to the buyer that the equipment shall be free from defects in materials or workmanship for a period of 180 days commencing on the date of invoice. Any goods or parts claimed by the buyer to be defective must be returned to Eastman, freight charges prepaid, within the 180-day warranty period. If Eastman determines that the goods or parts are defective in materials or workmanship, Eastman's sole obligation under this warranty shall be, at Eastman's sole option, to repair or replace the defective goods or parts or to provide the buyer a credit equal to the portion of the purchase price allocable to the defective goods or parts. This warranty shall not apply if defects are caused by product misuse or neglect, if the machine has been altered or modified by the buyer, or if other than genuine Eastman belts, emery wheels, knives or parts are used in the machine. THIS WARRANTY IS THE ONLY WARRANTY APPLICABLE TO THIS PURCHASE. SELLER DISCLAIMS ALL OTHER WARRANTIES, EXPRESS OR IMPLIED, INCLUDING, BUT NOT LIMITED TO, THE IMPLIED WARRANTIES OF MERCHANTABILITY AND FITNESS FOR A PARTICULAR PURPOSE.

**Limitation of Liability.** Eastman's liability to the buyer, and the buyer's remedies from Eastman, whether in contract, negligence, tort, under any warranty or otherwise, shall be limited to the remedies provided in the foregoing Limited Warranty. In no event shall Eastman have any responsibility or liability to the buyer for (a) any special, indirect, incidental, or consequential damages, including, but not limited to, loss of use, revenue, or profit, even if Eastman has been advised of the possibility of such damages, or (b) any claim against the buyer by any third party. The price stated for the product sold is a consideration for limiting Eastman's liability.

# Eastman®

Over a Century of Cutting Expertise

779 Washington St., Buffalo, N.Y. 14203-1396 U.S.A. • (716)856-2200 • Fax (716)856-1140 or (716)856-2068

Manufacturers of Eastman Cloth Cutting and Cloth Spreading Machines

Website: [www.EastmanCuts.com](http://www.EastmanCuts.com)