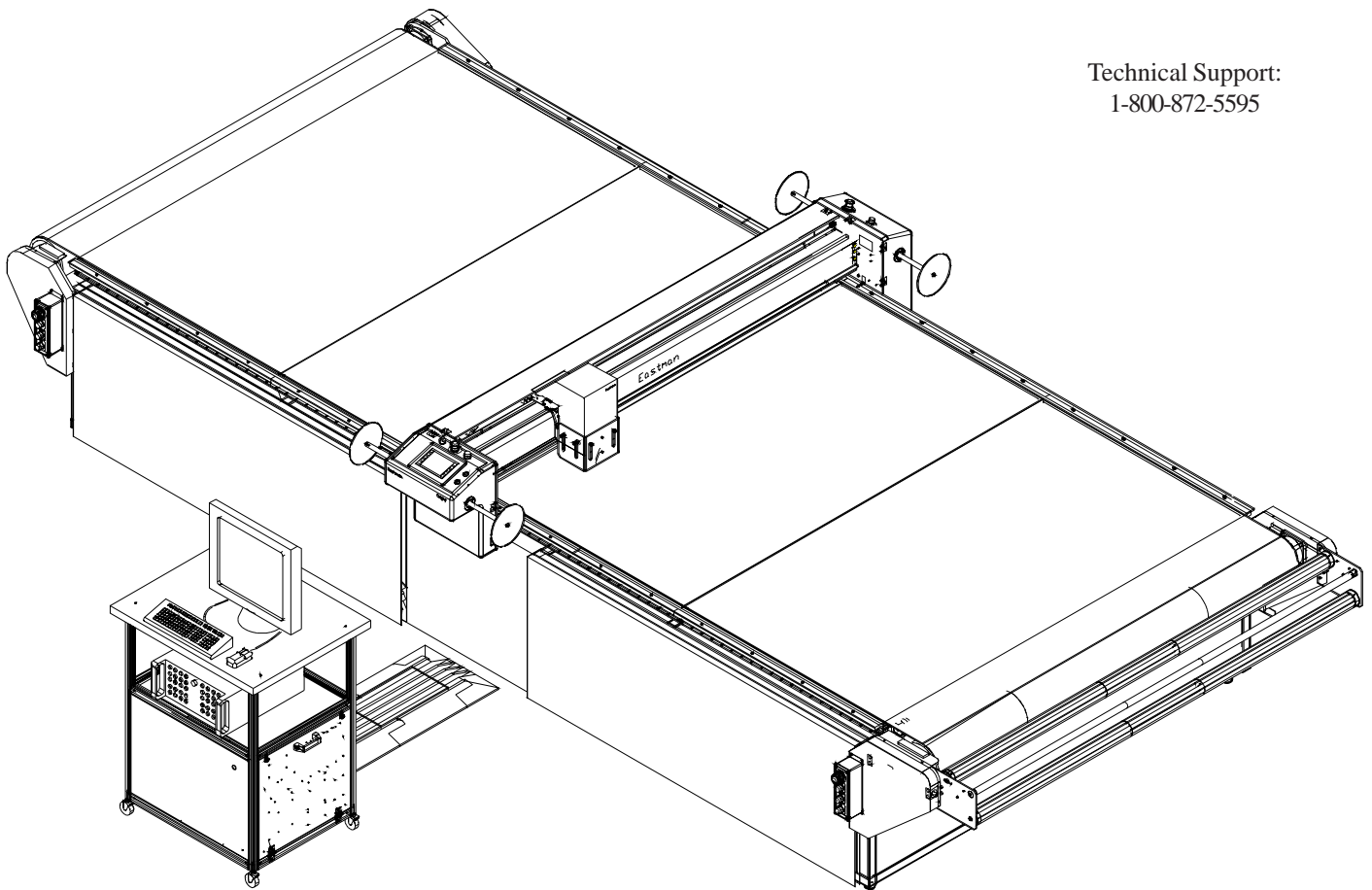


Eastman®

---

**THE EASTMAN®  
Eagle Conveyor  
System Diagrams Manual  
Model: Eagle-C**

Technical Support:  
1-800-872-5595



**⚠ WARNING**

This machine is equipped with a very sharp knife. Keep hands, arms, and hair away from the knife area at all times.

Misuse of this machine or failure to follow all safety instructions on this machine and in the instruction manual may result in serious personal injuries.

**Eastman®**

*Over a Century of Cutting Expertise*

779 Washington St., Buffalo, N.Y. 14203-1396 U.S.A. • (716)856-2200 • Fax (716)856-1140 or (716)856-2068  
Manufacturers of Eastman Cloth Cutting and Cloth Spreading Machines  
Website: [www.EastmanCuts.com](http://www.EastmanCuts.com)

Table of Contents

General Safety Precautions ..... 3

Safety Information ..... 3

Reference Manuals ..... 4

Recommended Spare Parts List ..... 4

Software Solutions ..... 4

Safety Zones and Stop Devices ..... 5

Eagle Conveyor Cutting System Familiarization ..... 6

Eagle-C Schematic & Wiring Diagram 31-9000-26 (Sheet 1 of 6) . 7

Eagle-C Schematic & Wiring Diagram 31-9000-26 (Sheet 2 of 6) . 8

Eagle-C Schematic & Wiring Diagram 31-9000-26 (Sheet 3 of 6) . 9

Eagle-C Schematic & Wiring Diagram 31-9000-26 (Sheet 4 of 6) 10

Eagle-C Schematic & Wiring Diagram 31-9000-26 (Sheet 5 of 6) 11

Eagle-C Schematic & Wiring Diagram 31-9000-26 (Sheet 6 of 6) 12

Gantry Pneumatic Diagram 31-9000-19 ..... 13

Belt Tracking Pneumatic Diagram 68-26184-P ..... 14

Notes ..... 15

Technical Data ..... 16

IMPORTANT

The purchaser must instruct all operators on the proper use of this equipment. All standard industrial safety measures and equipment should be provided to protect the operator. Operators must be cautioned that improper or careless use of this equipment may cause personal injury. If you do not have qualified operators to instruct new persons, contact your EASTMAN sales representative or EASTMAN factory direct.

Electrical connections and servicing to this equipment should be made by a qualified electrician who is familiar with applicable codes and regulations. Disconnect this equipment from electrical power source before proceeding with any disassembly for adjustment or repair.

Your Eastman **Eagle Conveyor System** is designed to operate at a high rate speed. All personnel should be instructed to wear safety glasses and stand well clear of the **Eagle Conveyor System** when in operation.

---

## Safety Information

Throughout this manual, safety information is presented by the use of the terms WARNING, CAUTION, ELECTRICAL HAZARD, and NOTE. These terms have the following meanings:



### WARNING

A warning contains critical information regarding potential safety hazards that can occur during proper use or misuse of the machine. Failure to follow these procedures may result in serious personal injury to the user.



### CAUTION

A caution contains instructions for the use or maintenance of the machine. Failure to follow these procedures may result in damage to the machine.



### ELECTRICAL HAZARD

An electrical hazard calls attention to a procedure, practice, or the like, which, if not correctly performed or adhered to, could result in personal injury. Do not proceed beyond an Electrical Hazard.

Supplementary information may be given in a Note.

## General Safety Precautions



### WARNING

- This machine is equipped with very sharp and dangerous tools. Keep hands, arms, and hair away from the cutting area and drive system at all times. Safety gloves, glasses, and appropriate clothing may prevent serious personal injuries.
- Disconnect the power supply to the machine when it is not in use or during routine maintenance, including cleaning and lubrication.
- The purchaser must instruct all operators in the proper use of the machine according to the instructions in this manual. This training must include instruction on the potential safety hazards arising from the use or misuse of the machine. In addition to such training, the purchaser should provide written work instructions as necessary to ensure correct use of the machine for specific cutting and spreading applications.
- Do not modify this machine or disable safety features. Unauthorized modification may result in serious personal injuries to the user. Electrical connections to this machine must be made by a qualified electrician familiar with applicable codes and regulations.
- Safety labels must be kept clean and legible at all times. Call the Eastman Machine factory to order replacement labels.

## Safety and Indemnification

During the life of the machine, the purchaser agrees to provide to all machine users (including its own employees and independent contractors) all relevant safety information, including warning labels and instruction manuals. The purchaser also agrees to maintain the safety features and working condition of the machine, and to adequately train all users in the safe use and maintenance of the machine. The purchaser agrees to defend, protect, indemnify, and hold Eastman Machine Company and its subsidiaries harmless from and against all claims, losses, expenses, damages, and liabilities to the extent that they have been caused by the purchaser's failure to comply with the terms and instructions of this manual.

---

**Eastman®**

*Over a Century of Cutting Expertise*

The Eastman **Eagle Conveyor** Automated Cutting machine has been inspected and tested at the factory prior to shipment. The Eagle Conveyor machine is shipped partially disassembled and requires some assembly and setup before operation can take place. Refer to the installation guide for installation instructions. To get the best performance, familiarize yourself and all operators with all functions and adjustments of this equipment. Refer to the Eagle Conveyor service manual. Before any operation takes place it is important carefully read and follow the instructions in these reference manuals.

This Illustrated Parts List is a comprehensive list of the components used in the machine. When ordering replacement parts, please include machine name and serial number. Some machine configuration may require additional components not shown, please consult factory for part numbers.

The following list of recommended spare parts and reference manuals may be included with your machine or purchased at a later date.

## Reference Manuals

E-536 ..... Eagle-C Instruction and Service Manual  
E-534 ..... Eagle-C Illustrated Parts List  
E-515 ..... Automated Cutting Tools Illustrated Parts Manual  
E-521-2.1 ..... Easicut 2 Software Manual  
E-522 ..... Air Brush Marking System Manual  
E-535 ..... Touch Screen Software Install guide

## Recommended Spare Parts List

### Part Number Description

10-00900-2 ...	Computer Multifunction Board
31-03002 .....	Motion Control Board, MEI
31-B2005 .....	X1-Axis Motor
31-B2000 .....	X2-Axis Motor
31-S3205-1 ..	Y-Axis Motor
31-03012-2 ...	Motor Amplifiers, Quantity of 2
54-26295 .....	X-Axis Spur Gear, Quantity of 2
31-12660-15 .	5 vdc Power Supply
31-12660-16 .	12 vdc Power Supply
54-D0066 .....	X-Axis Motor Pulley
67-12983 .....	X-Axis Linear Bearing, Quantity of 2
Consult Factory	Replacement Cutting Surface
See E-515 Manual	Replacement Pen
See E-515 Manual	Replacement Cutting Tools

## Software Solutions

Eastman offers a wide variety of software to solve even the most difficult tasks.

Please consult your nearest Eastman Representative or the Eastman Factory direct for more information.

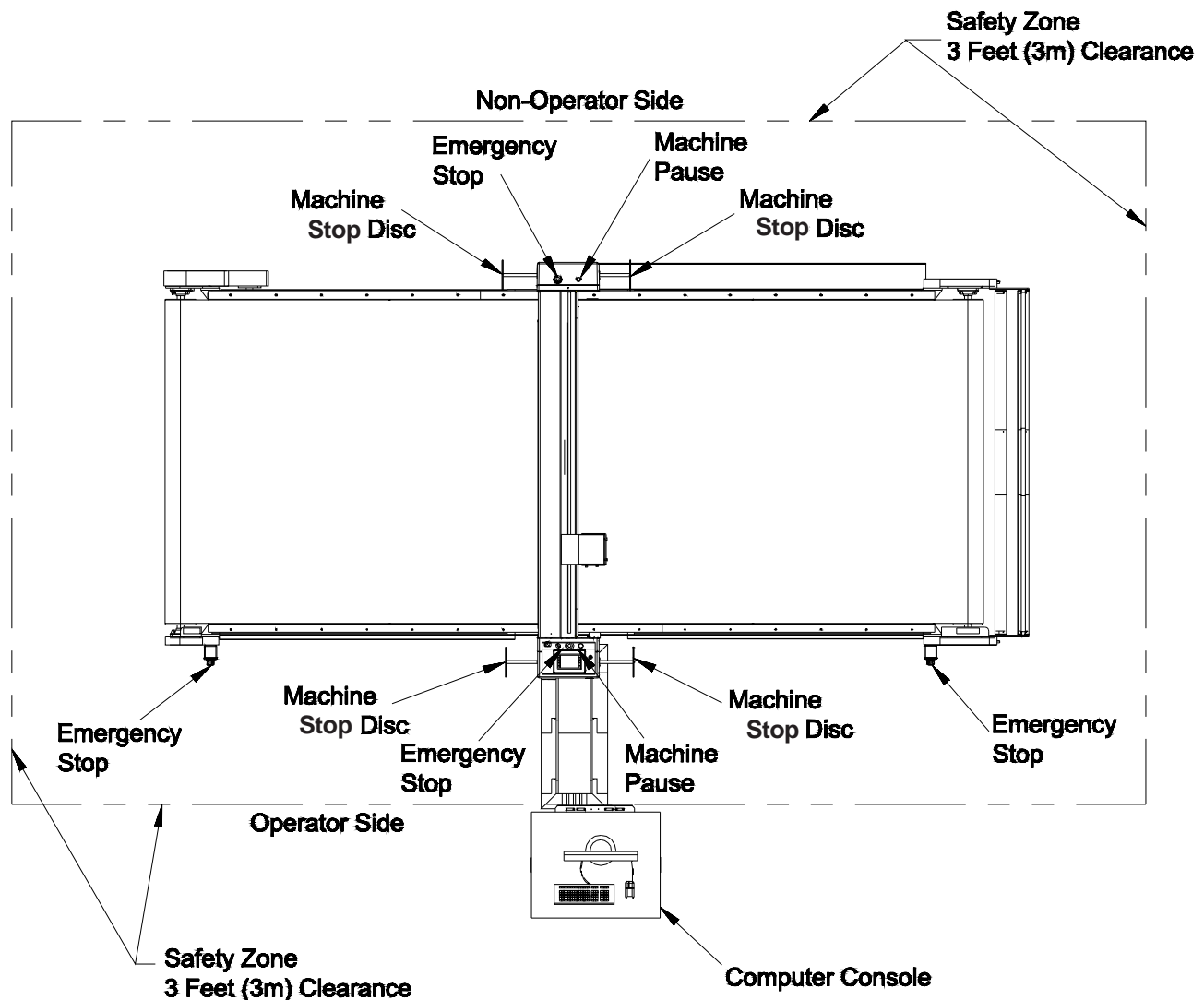
## Safety Zones and Stop Devices

### Pause Buttons/ Stop Discs

The yellow buttons above the control panel and on the non-operator side of the gantry as well as the stop discs on each side of the gantry will pause the machine. Activating either the button or the stop discs will execute a controlled stop of the plotter, with the machine remaining fully powered. After releasing the pause button or resetting the stop discs and pressing NEXT on the UIT keypad, the cutter will resume cutting the work in progress. Pressing ABORT will cancel the job.

### Emergency Stop Buttons

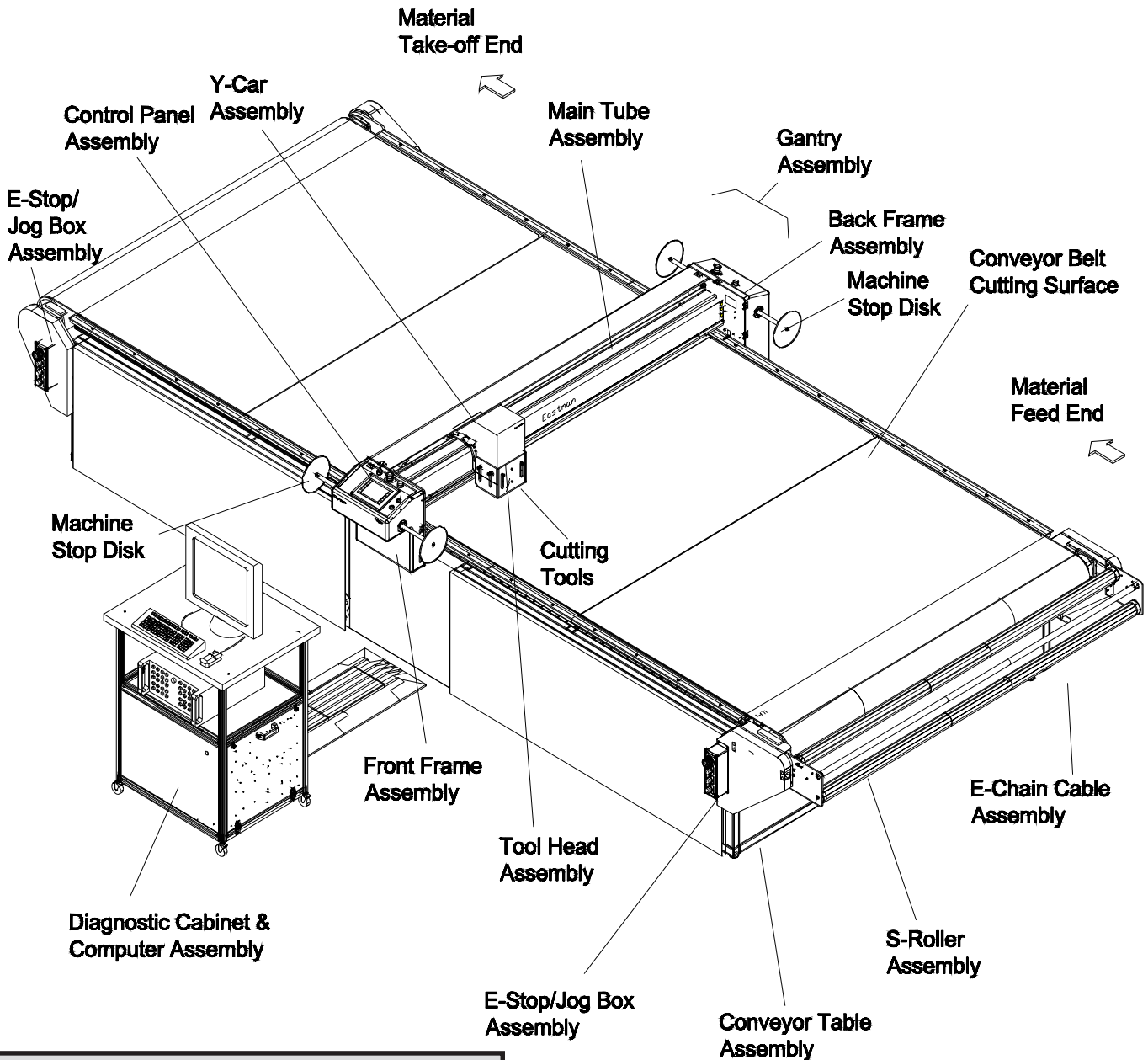
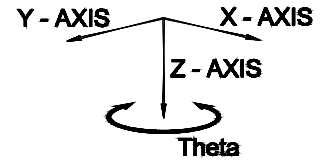
There are red Emergency Stop buttons located on each side of the gantry as well as on the operator side right and left ends of the table. Pressing any of the Emergency Stop buttons will execute a controlled stop of the gantry before cutting all power to the motors and e-box. To release an Emergency Stop condition, pull out the Stop button hit the ABORT key on the UIT keypad. The table must be re-homed by pressing the ZERO TABLE button before restarting the cutter. Emergency stop mats are also available as an option.



**Eastman®**

*Over a Century of Cutting Expertise*

## Eagle Conveyor Cutting System Familiarization

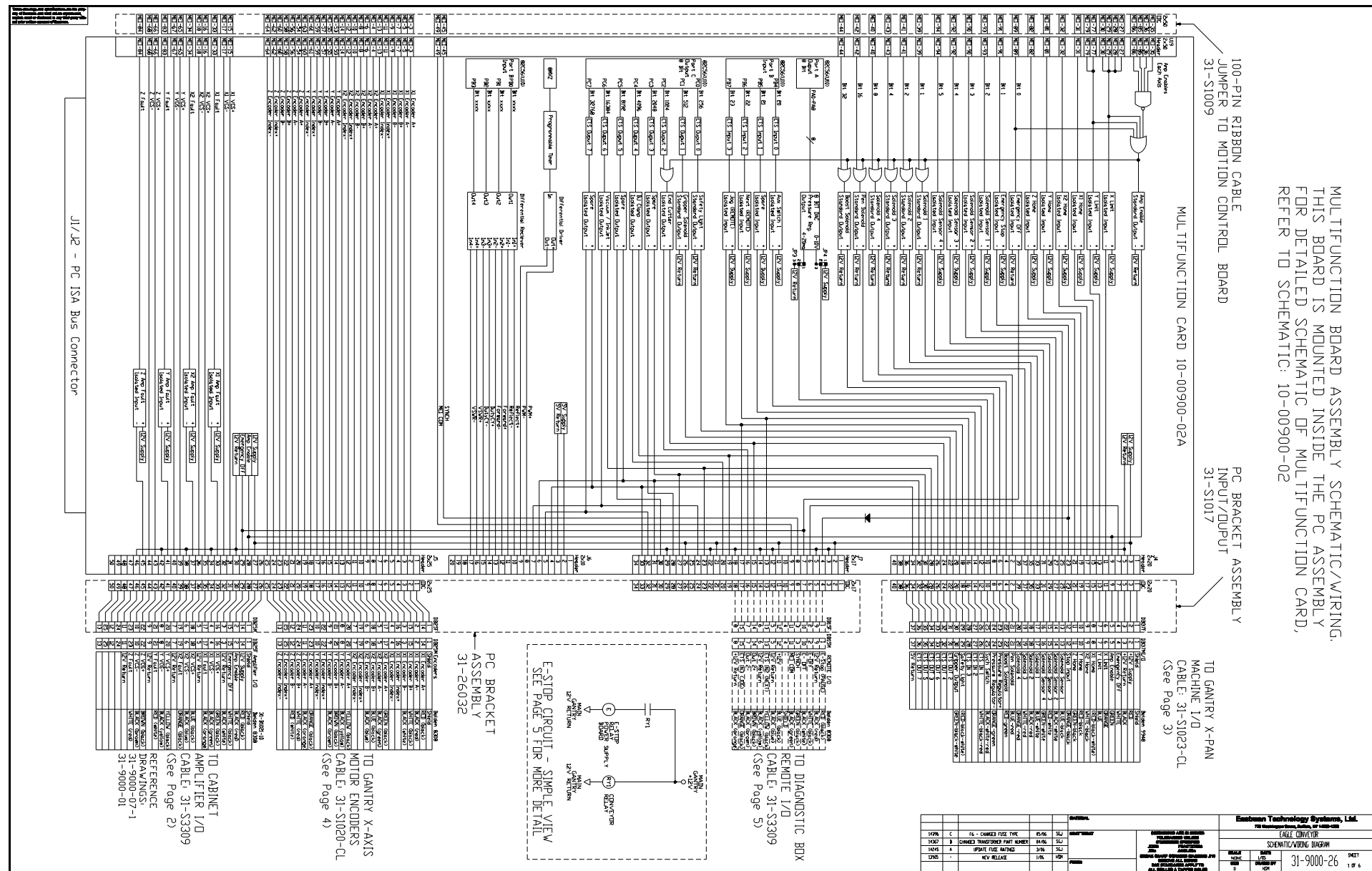


### Software Solutions

Eastman offers a wide variety of software to solve even the most difficult tasks. Please consult your nearest Eastman Representative or the Eastman Factory direct for more information.

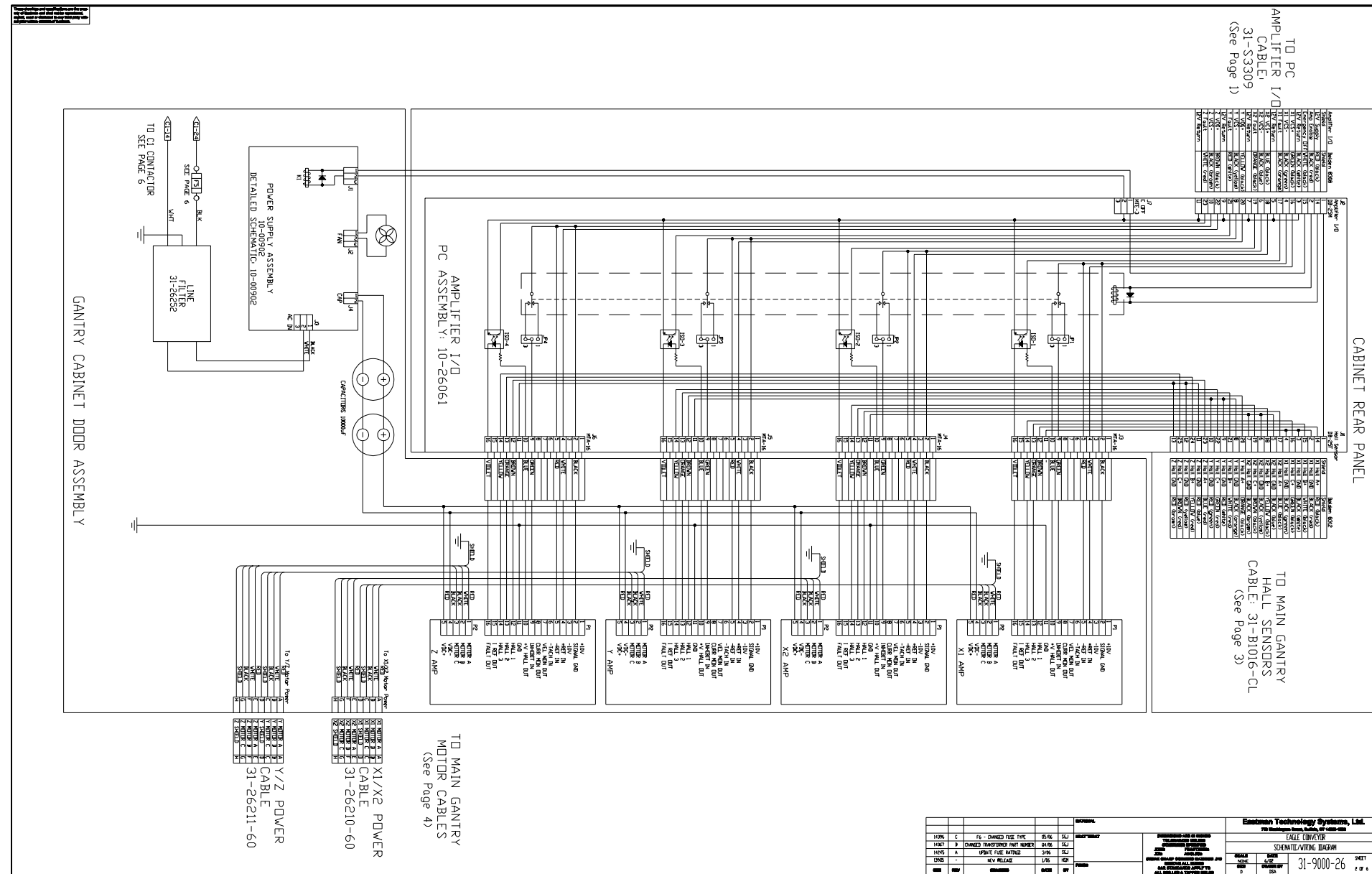
## ***Eagle-C Schematic & Wiring Diagram***

### ***31-9000-26 (Sheet 1 of 6)***



## ***Eagle-C Schematic & Wiring Diagram***

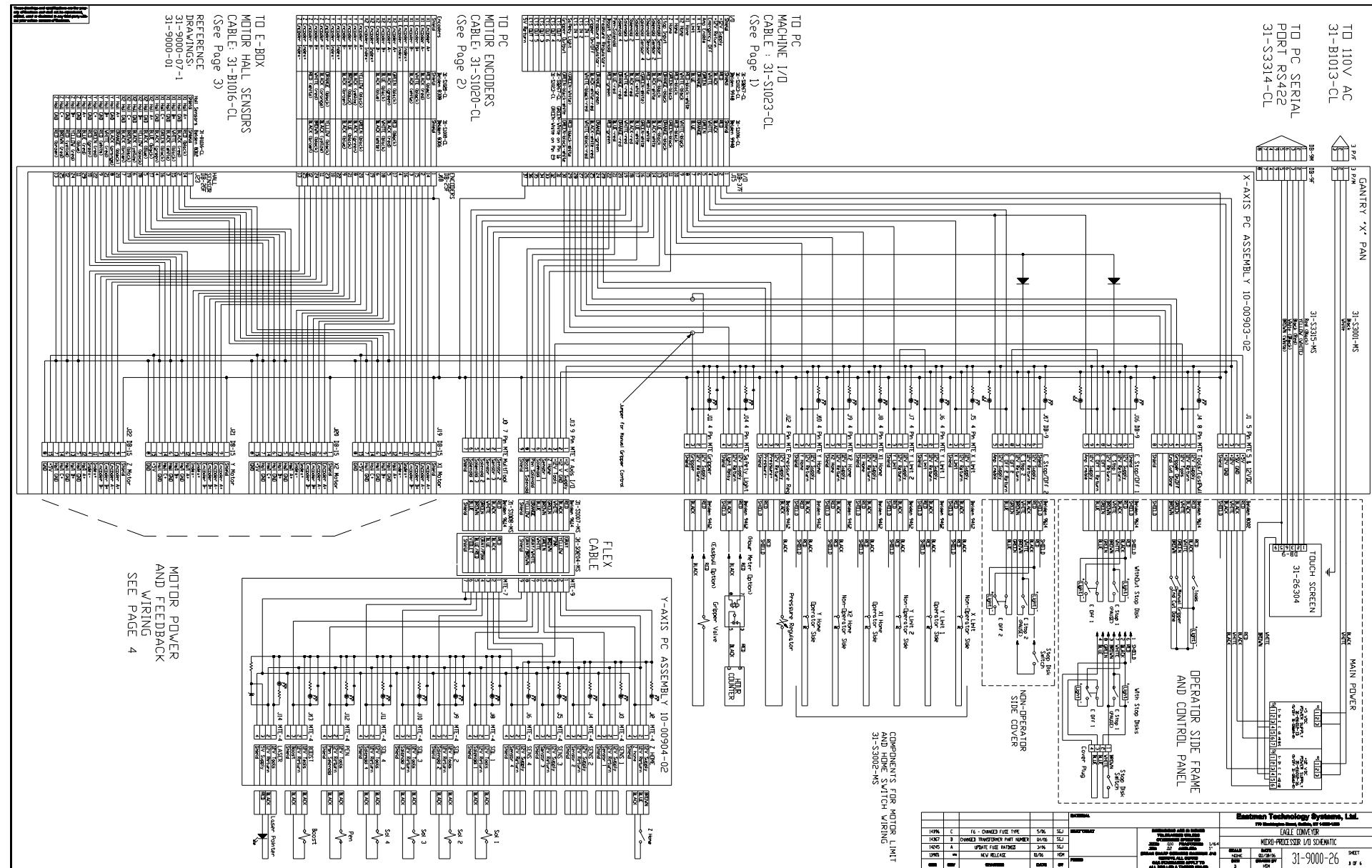
### ***31-9000-26 (Sheet 2 of 6)***



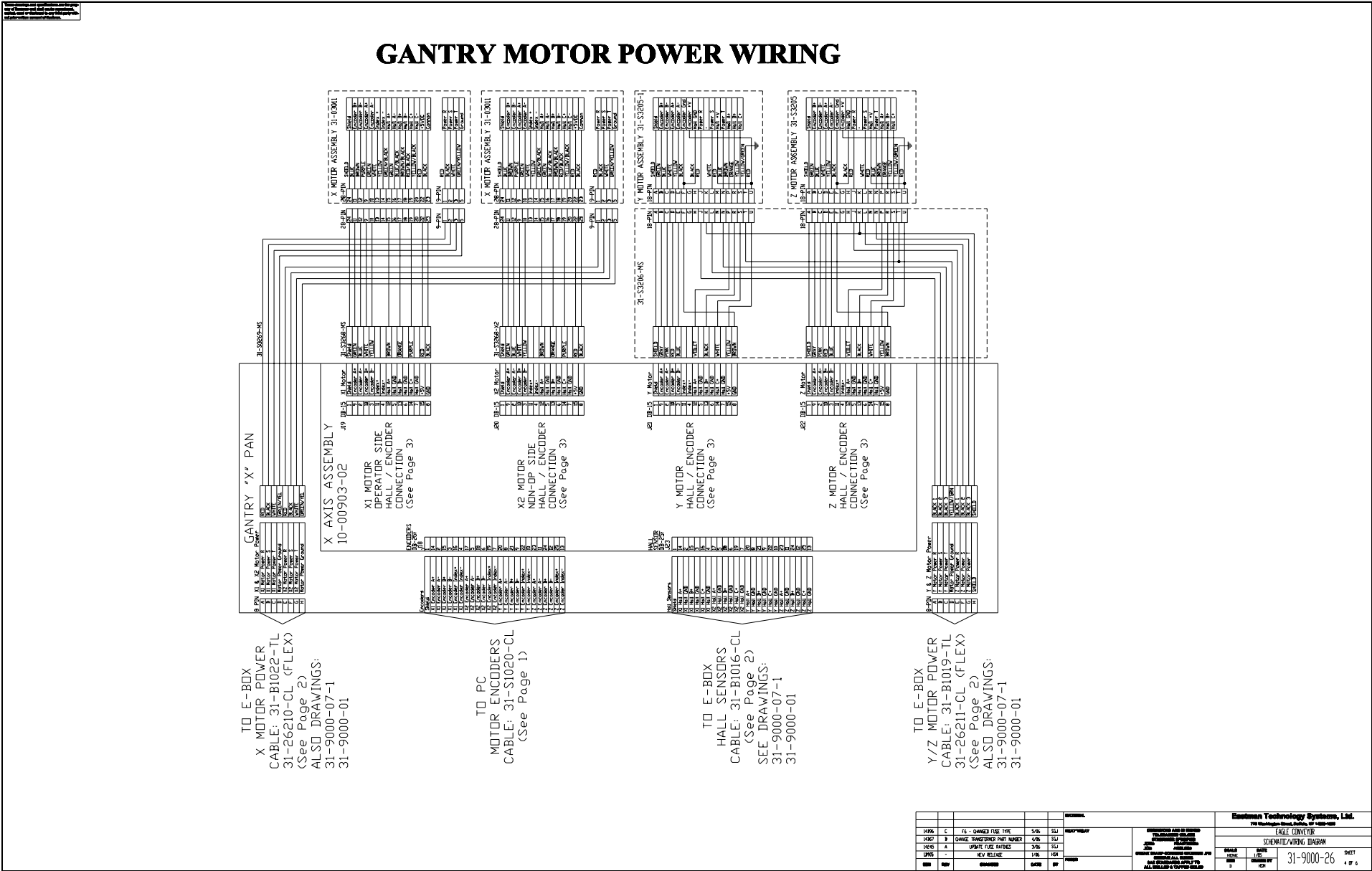


## ***Eagle-C Schematic & Wiring Diagram***

### ***31-9000-26 (Sheet 3 of 6)***

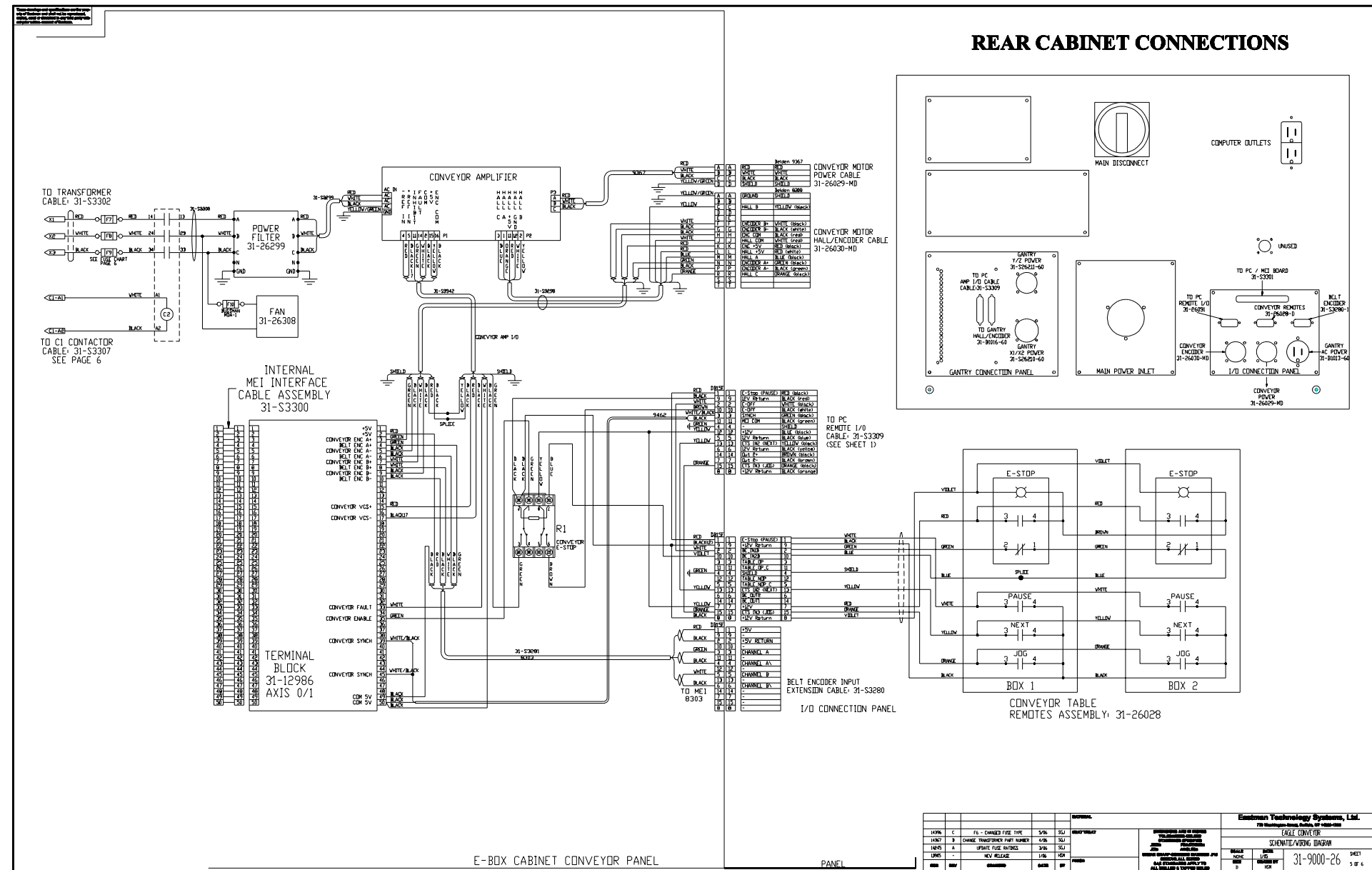


Eagle-C Schematic & Wiring Diagram  
31-9000-26 (Sheet 4 of 6)



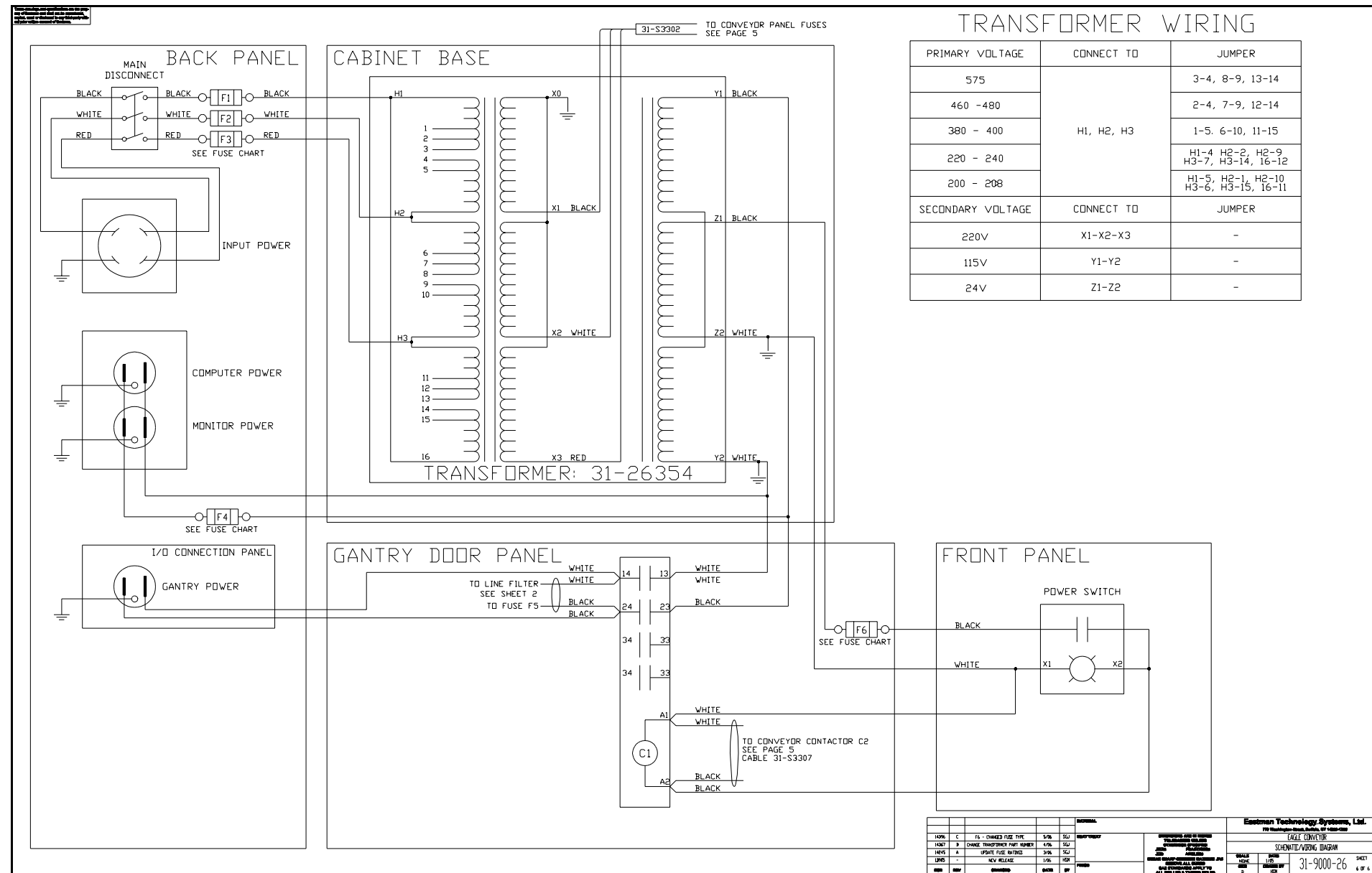
## ***Eagle-C Schematic & Wiring Diagram***

### ***31-9000-26 (Sheet 5 of 6)***



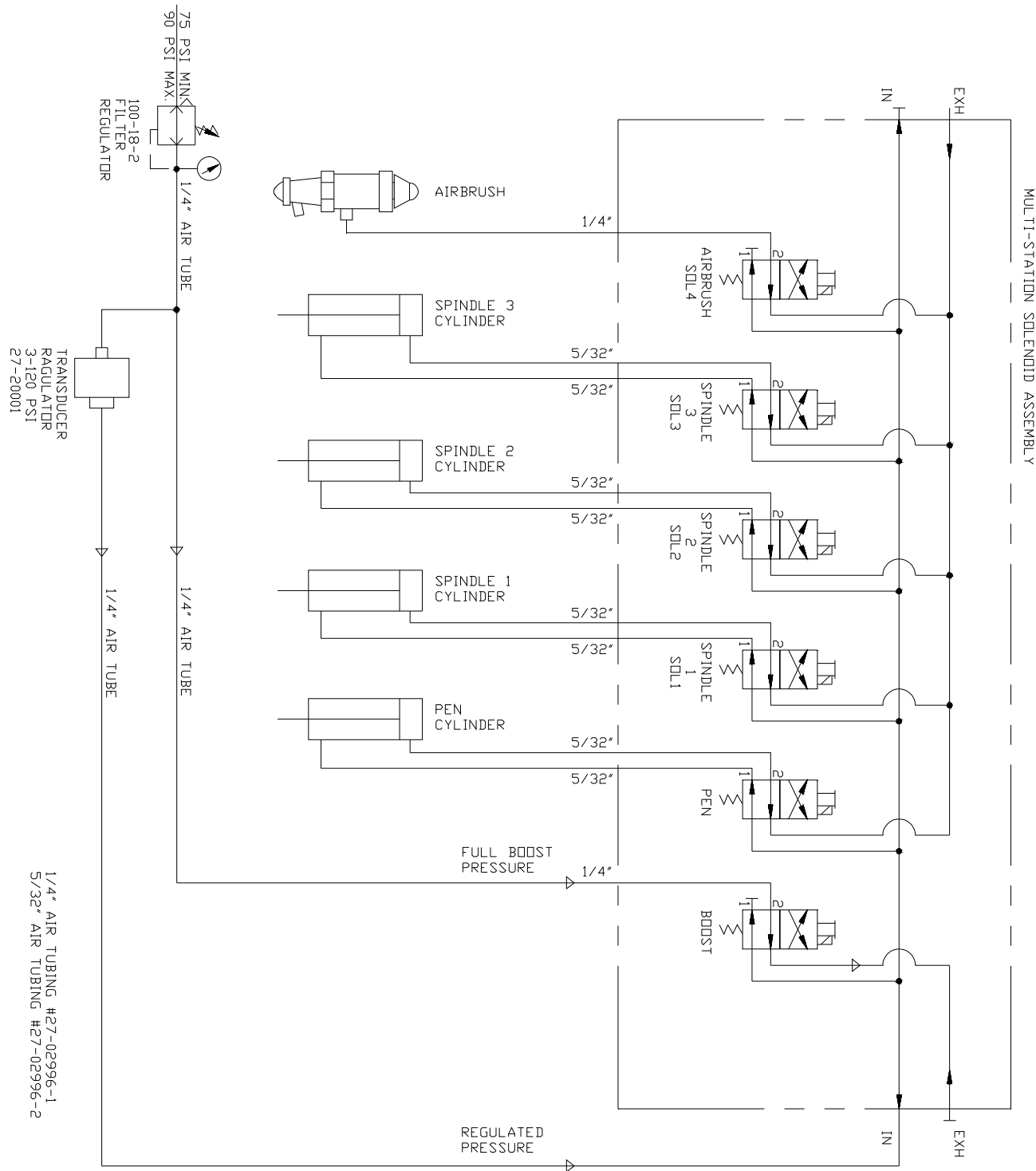
## ***Eagle-C Schematic & Wiring Diagram***

### ***31-9000-26 (Sheet 6 of 6)***



# Gantry Pneumatic Diagram

## 31-9000-19

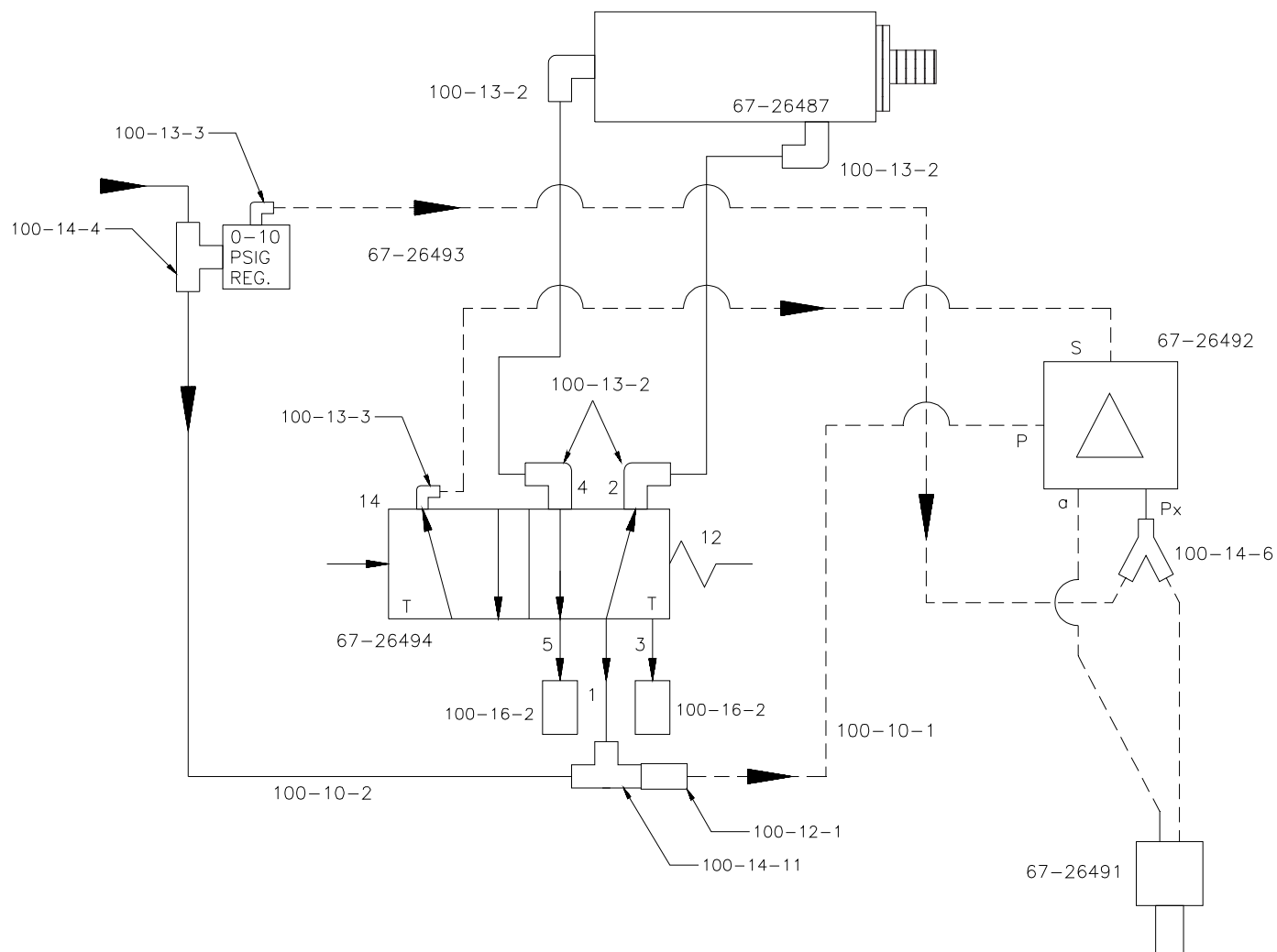


**Eastman®**

Over a Century of Cutting Expertise

# **Belt Tracking Pneumatic Diagram**

## **68-26184-P**



---

## Notes

---

**Eastman®**

Over a Century of Cutting Expertise

## Technical Data EASTMAN® Eagle-C

### Eagle-C

Maximum Gantry Speed*	60 in/sec. (150 cm/sec.)
Medium Speed Conveyor Speed*	28 in/sec. (70 cm/sec.)
High Speed Conveyor Speed*	40 in/sec. (100 cm/sec.)
Maximum Table Length	24ft. (366 cm.)
Cut Accuracy*	+/- .015" (+/- .4 mm)
Eagle Gantry Weight	Approx. 200 lbs. (145 kg)
Eagle Gantry Operating Voltage	110v; 60hz, 50hz
Blower Operating Voltage	220v; 60hz, 50hz
Power Requirement (Eagle Gantry)	110V/20A
(Blowers)	220V/25A
Minimum Operating Pressure	75 PSI
Volume of Air Service	5 SCFM

Information based on a standard 72" Maximum cutting capacity machine.

\* Relative to the type and quality of fabric, Cutting speed, Pulling mode, Operational Settings etc.

Machine Size	Working Width	Conveyor Width	Overall Machine Width
60" (1530 mm)	60" (1530 mm)	81" (2469 mm)	94" (2865 mm)
66" (1680 mm)	66" (1680 mm)	87" (2652 mm)	100" (3048 mm)
72" (1830 mm)	72" (1830 mm)	93" (2835 mm)	106" (3230 mm)
78" (1980 mm)	78" (1980 mm)	99" (3018 mm)	112" (3413 mm)

Please allow 3 ft working clearance on all sides.

\* For all other sizes consult factory.

**Limited Warranty.** Eastman warrants to the buyer that the equipment shall be free from defects in materials or workmanship for a period of 180 days commencing on the date of invoice. Any goods or parts claimed by the buyer to be defective must be returned to Eastman, freight charges prepaid, within the 180-day warranty period. If Eastman determines that the goods or parts are defective in materials or workmanship, Eastman's sole obligation under this warranty shall be, at Eastman's sole option, to repair or replace the defective goods or parts or to provide the buyer a credit equal to the portion of the purchase price allocable to the defective goods or parts. This warranty shall not apply if defects are caused by product misuse or neglect, if the machine has been altered or modified by the buyer, or if other than genuine Eastman belts, emery wheels, knives or parts are used in the machine. THIS WARRANTY IS THE ONLY WARRANTY APPLICABLE TO THIS PURCHASE. SELLER DISCLAIMS ALL OTHER WARRANTIES, EXPRESSOR IMPLIED, INCLUDING, BUT NOT LIMITED TO, THE IMPLIED WARRANTIES OF MERCHANTABILITY AND FITNESS FOR A PARTICULAR PURPOSE.

**Limitation of Liability.** Eastman's liability to the buyer, and the buyer's remedies from Eastman, whether in contract, negligence, tort, under any warranty or otherwise, shall be limited to the remedies provided in the foregoing Limited Warranty. In no event shall Eastman have any responsibility or liability to the buyer for (a) any special, indirect, incidental, or consequential damages, including, but not limited to, loss of use, revenue, or profit, even if Eastman has been advised of the possibility of such damages, or (b) any claim against the buyer by any third party. The price stated for the product sold is a consideration for limiting Eastman's liability.

**Eastman®**

Over a Century of Cutting Expertise

779 Washington St., Buffalo, N.Y. 14203-1396 U.S.A. • (716)856-2200 • Fax (716)856-1140 or (716)856-2068

Manufacturers of Eastman Cloth Cutting and Cloth Spreading Machines

Website: [www.EastmanCuts.com](http://www.EastmanCuts.com)