

Eastman®

THE EASTMAN

AutoTrack Falcon II

with Pneumatic Lift

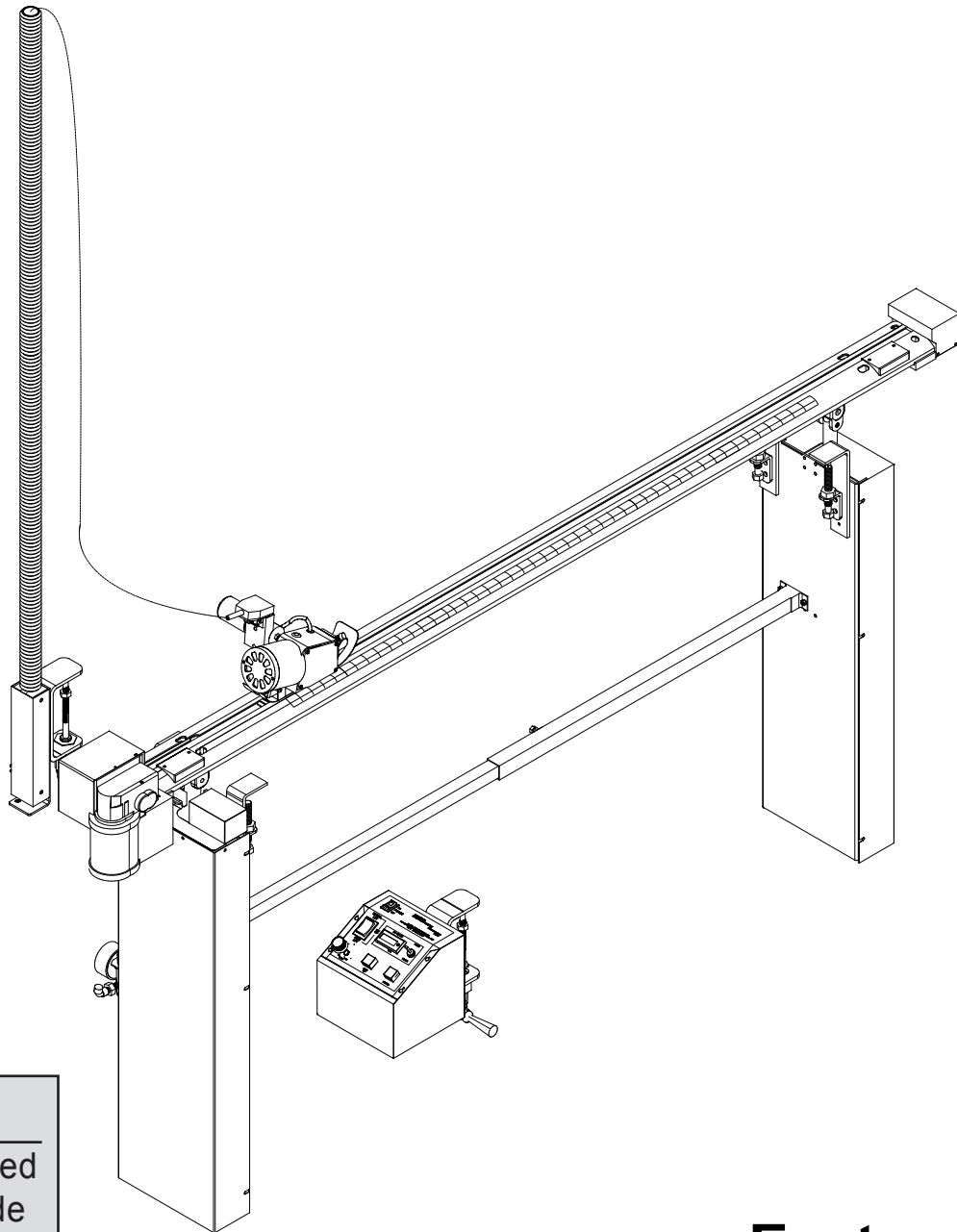
MODEL ATF-II-MS



WARNING

Safety glasses must be worn at all times when operating or servicing this equipment.

Instruction Manual & Illustrated Parts List



CAUTION

Machine Equipped
with Sharp Blade

Eastman®

Over a Century of Cutting Expertise

779 Washington St., Buffalo, N.Y. 14203-1396 U.S.A. • (716)856-2200 • Fax (716)856-1140 or (716)856-2068

Manufacturers of Eastman Cloth Cutting and Cloth Spreading Machines

www.EastmanCuts.com

Table of Contents

INSTALLATION.....	3	Fuse Replacement.....	7
Mount Track to Table.....	3	Traverse Belt Replacement and	8
Mount Mast	3	Falcon Cutter Installation	8
Mount Control Box	3	Lift Belt Replacement.....	9
Air Line Hook-Up.....	3	AFT II - Familiarization	10
Digital Control Box.....	4	Optional Components.....	10
Familiarization	4	Control Box.....	12
Operation.....	4	Falcon Cutter.....	14
Non-Lift Type.....	5	Falcon Cutter, Pneumatic	16
Adjustments.....	5	Track Assembly	18
Cutting Speed	5	Drive Motor	20
Air Regulator Valve	5	Front Lift Assembly	22
Speed Control Valve	5	Rear Lift Assembly.....	24
Maintenance.....	5	Non-Lift Clamp Assembly	26
Drive Motor Brush Replacement.....	5	Mast Assembly	28
Knife Motor.....	6	Mast Assembly, Pneumatic.....	29
Knife Sharpener.....	6	Festoon Mast Assembly	30
Knife Replacement.....	6	Festoon Mast Assembly 110V Pneumatic	32
Shear Plate Replacement.....	6	Cord Reel Assembly, 110V	34
Shear Plate Adjustment	6	Electrical Schematic	35
Sharpener Replacement	7	Wiring Diagram.....	36
Lubrication of Knife Gear	7	Service Record.....	39
Motor Brush Replacement	7		

IMPORTANT

The purchaser must instruct all operators on the proper use of this equipment. All standard industrial safety measures and equipment should be provided to protect the operator. Operators must be cautioned that improper or careless use of this equipment may cause personal injury. If you do not have qualified operators to instruct new persons, contact your EASTMAN sales representative or EASTMAN factory direct.

Electrical connections and servicing to this equipment should be made by a qualified electrician who is familiar with applicable codes and regulations. Disconnect this equipment from electrical power source before proceeding with any disassembly for adjustment or repair.

The Auto Track Falcon II with Pneumatic Lift is designed to raise track with force. To prevent injury, all personnel should be instructed to wear safety glasses and stand well clear of track when in operation.

Limited Warranty. Eastman warrants to the buyer that the equipment shall be free from defects in materials or workmanship for a period of 180 days commencing on the date of invoice. Any goods or parts claimed by the buyer to be defective must be returned to Eastman, freight charges prepaid, within the 180 day warranty period. If Eastman determines that the goods or parts are defective in materials or workmanship, Eastman's sole obligation under this warranty shall be, at Eastman's sole option, to repair or replace the defective goods or parts or to provide the buyer a credit equal to the portion of the purchase price allocable to the defective goods or parts. This warranty shall not apply if defects are caused by product misuse or neglect, if the machine has been altered or modified by the buyer, or if other than genuine Eastman belts, emery wheels, knives or parts are used in the machine. THIS WARRANTY IS THE ONLY WARRANTY APPLICABLE TO THIS PURCHASE. SELLER DISCLAIMS ALL OTHER WARRANTIES, EXPRESS OR IMPLIED, INCLUDING, BUT NOT LIMITED TO, THE IMPLIED WARRANTIES OF MERCHANTABILITY AND FITNESS FOR A PARTICULAR PURPOSE.

Limitation of Liability. Eastman's liability to the buyer, and the buyer's remedies from Eastman, whether in contract, negligence, tort, under any warranty or otherwise, shall be limited to the remedies provided in the foregoing Limited Warranty. In no event shall Eastman have any responsibility or liability to the buyer for (a) any special, indirect, incidental, or consequential damages, including, but not limited to, loss of use, revenue, or profit, even if Eastman has been advised of the possibility of such damages, or (b) any claim against the buyer by any third party. The price stated for the product sold is a consideration for limiting Eastman's liability.

Before operating machine, read these instructions carefully. Familiarize yourself with all functions and adjustments of this equipment.

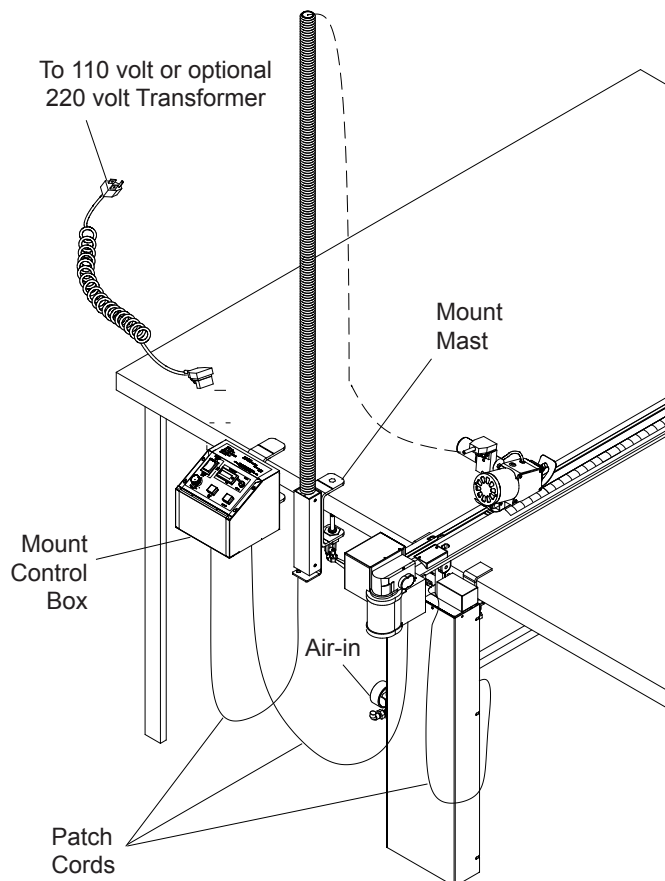
The Auto Track Falcon II is shipped partially disassembled with all the necessary parts for proper setup and operation. Before any operation can take place, the installation procedure must be followed.

INSTALLATION

Open shipping crate and inspect all parts.

The parts included are:

- (1) Part and Instruction Manual.
 - (1) Track Assembly with Pneumatic Lift.
 - (1) Mast Assembly
 - (2) Support Tubes
 - (1) Digital Control Box
 - (1) Patch Cords
 - (1) Hardware Package containing (8) Screws,
(8) Hex Nuts, and (8) Lock Washers
 - (1) Remote Start Device (optional)
 - (1) Foot Pedal Start (optional)
 - (1) Transformer 220 volt (optional)
 - (1) Voltage Stabilizer Kit (optional)
 - (1) Air Compressor Kit (optional)
- see page 10



Mount Track to Table

Remove track with lift from crate and place on table with track edge parallel to seam in your cutting table. Use a framing square, or similar tool to check machine for cut of fabric exactly as desired. Clamp the track to table at both front and rear ends of track.

Remove (10) ten screws on front lift cover and (6) six screws on rear lift cover. Set covers aside. Mount the (2) two support tubes to the lift frames and secure as shown on page 11. Unroll the nylon lift belt on the front lift and thread belt under front pulley, thorough lower support tube, over rear pulley, and under rear lock plate. Do not twist belt when threading. Pull lift belt hand tight and secure lock plate screws. See maintenance section for threading diagram. Replace front and rear lift covers.

Mount Mast

Clamp mast to table at front side of track. Connect the cord at base to the socket on digital control box and the other end to the falcon cutter.

Mount Control Box

Clamp control box to table at front side of track. Connect the large patch cord between the control box and the gear housing and the small patch cord between the control box and the socket on the front lift plate.

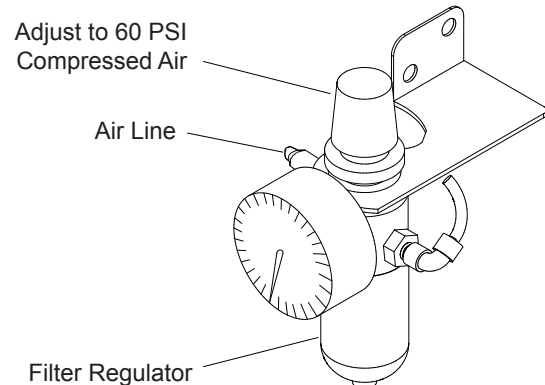


CAUTION

Check to be sure the power supply is the same voltage rating as stamped on the control box terminal block.

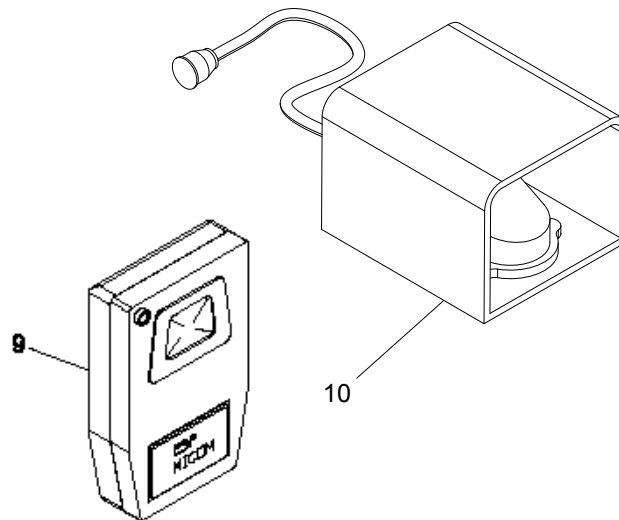
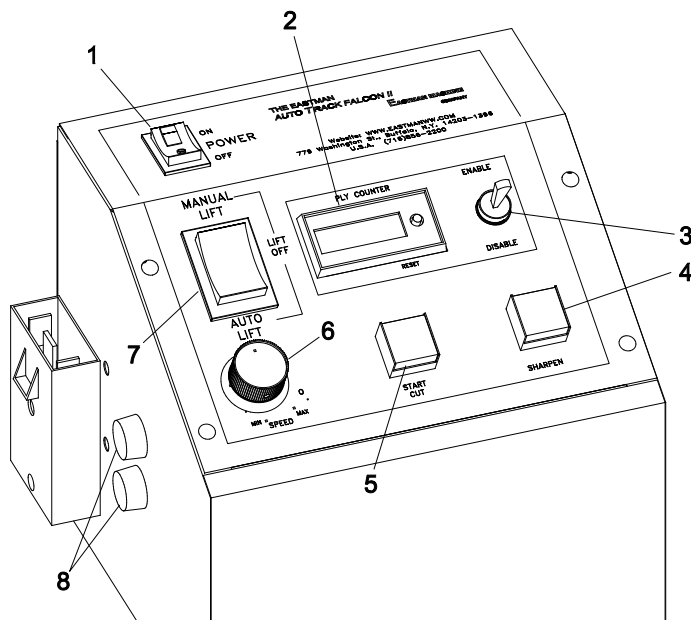
Air Line Hook-Up

The Pneumatic Lift requires a 60-80 psi compressed air line connected properly to the filter regulator. Locate the regulator on the front lift and connect the air line with a 1/4 N.P.T. Quick Connect or equivalent.



Eastman®

Over a Century of Cutting Expertise



Digital Control Box

Familiarization

1. **Main Power:** Activates power to all circuits. Red light is on when switch is at ON position.
2. **Ply Counter:** Counts the number of plies cut.
3. **Enable / Disable:** Enables the ply counter. Set to Disable to cut fabric flaws without incriminating count.
4. **Sharpener:** Allows Falcon Motor to run without moving Falcon Cutter when in ON position. Sharpen knife by pressing button on side of Falcon Cutter with constant pressure. Hold for 10 seconds, then release.
5. **Start Cut:** Press button to begin cutting cycle.
6. **Cutting Speed Adjustment:** Varies speed of cutting machine travel.
7. **Auto/Manual Lift:** Switches lift to Auto ,Off or Manual Lift Mode.
8. **Fuse: 2 AMP**
9. **Remote Control Start:** (optional) Remote hand held "Start Cut" button to begin cutting cycle.
10. **Foot Pedal: (optional)**
Press with foot to begin cutting cycle.

Operation



CAUTION

Before connecting power supply, make sure voltage rating is same as stamped on terminal block. Damage to control unit may result if incorrect power supply is used.

Control Box

Activate main power by pressing POWER "ON-OFF" switch to ON position. The power light will go on, the digital display will activate.

Switch the "AUTO/MANUAL" lift switch to AUTO position. Cutting can now take place. Pull material to desired length beyond track. Press start button on control box or remote start (optional). Falcon Cutter will start and travel down track. When cutter stops and reverses, the lift mechanism raises track and drops down to clamp end of material. Counter records each cycle of knife motor.



CAUTION

The air lift is designed to raise track with force. To prevent injury, personnel should stand well clear of track when in operation. All operators should be trained in the operation of the machine prior to use.

IMPORTANT: To stop the Auto Track Falcon II at any point during operation, press the power ON-OFF switch to OFF position. To resume cutting, press power ON-OFF switch to on position then press start cut.

Non-Lift Type

The Non-Lift Auto Track Falcon II operates in the same manner as with lift except the track is permanently mounted to the table and will not lift to clamp the fabric.

Adjustments

This machine is adjusted and tuned at the factory for optimal performance. No adjustments other than normal setup are necessary. However, if after continued use the performance level becomes unacceptable, the following procedures should be carried out before repairs are considered.

Cutting Speed

The cutting speed will vary depending on material to be cut. To adjust cutting speed, locate the "Speed" knob on the control box. Turn the knob clockwise to increase the speed of cutter moving down the track and counterclockwise to decrease speed. If cutter tends to lag when cutting, less speed is required.

Air Regulator Valve

The air regulator valve, when adjusted properly at 60-80 PSI, will produce a quiet, smooth lifting motion. To adjust pressure, pull the "Adjust" knob up and turn clockwise to increase pressure and counterclockwise to decrease pressure. After adjustment is made, push knob down to lock in place.

Speed Control Valve

Located on the on the air cylinder, behind the lift cover. The speed control valve adjusts the speed and pressure of lift. To adjust, remove the front cover and locate the speed control valve. Adjust screw OUT to increase speed and pressure or IN to decrease. The track should raise up with minimum force for proper adjustment. Tighten thumb screw when adjustment is complete.



CAUTION

Improper adjustment can cause personal injury or damage to your machine. Adjustment should be made by qualified personnel.

Maintenance

NOTE: All maintenance procedures may be performed with knife motor (Falcon) installed in track. It is not necessary to remove Falcon from Auto Track II mechanism.

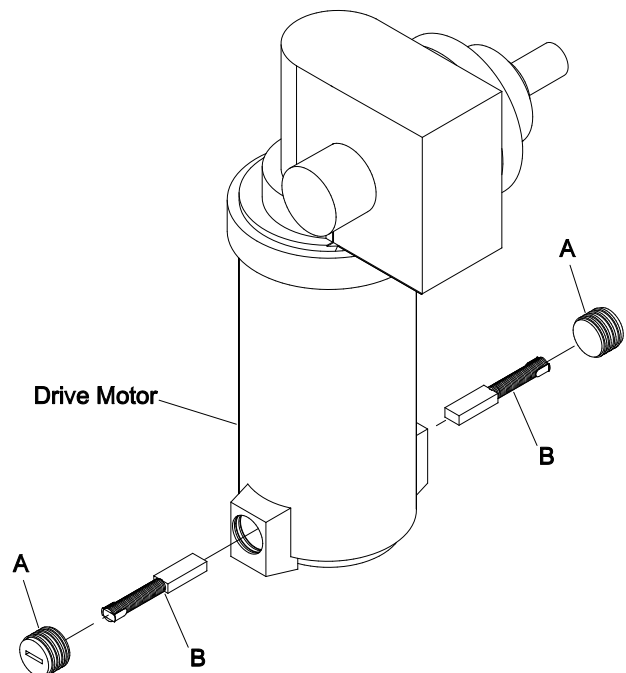


CAUTION

Before performing any of the following procedures, make sure that the attachment plug is disconnected from terminal block on the control box.

Drive Motor Brush Replacement

Remove two (2) caps 'A' from lower motor housing. Pull out Brush assembly 'B' and replace with brush kit. Use Brush p/n 36C1-16 & brush cap p/n 86C7-50.



Eastman®

Over a Century of Cutting Expertise

Knife Motor



WARNING

This machine is equipped with a sharp knife. Keep hands away from knife area at all times. DO NOT handle cutting machine at any time unless terminal block is disconnected from power supply. Knife guard should be raised only enough to clear the material being cut. When machine is not in use, knife guard should be set at its lowest position. DO NOT OPERATE THIS MACHINE WITH SAFETY GUARDS REMOVED.

Knife Sharpener

Turn Power switch to ON. (use CAUTION when sharpening blade). The Falcon Cutter remains in its home position and the blade turns. To obtain a fine, keen edge on the blade, Simultaneously press and hold sharpen button while pressing lightly against sharpener button which is located on the side of the Falcon Cutter. Press and hold button with constant pressure for 10 seconds, then release.



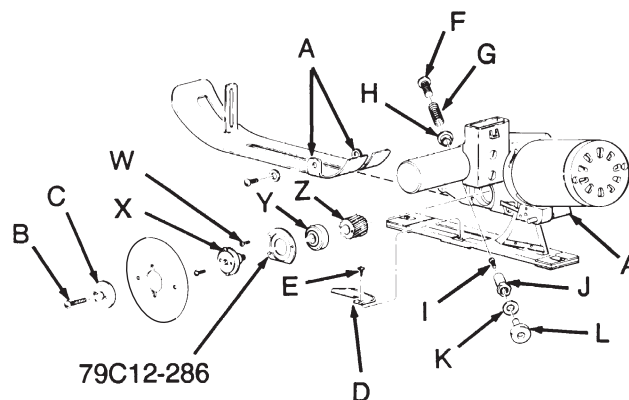
CAUTION

Before performing any of the following procedures, make sure that the attachment plug is disconnected from the terminal block at the control box.

Knife Replacement

Remove pressure foot from knife standard by removing two (2) screws and two (2) washers at "A". Remove thumb nut at front of cutter. Place small drift pin or screwdriver through hole in knife to prevent rotation. Remove knife bolt "B" and knife flange cover "C". Carefully lift out and discard used knife blade.

CAUTION: Discard used knife with care!



Insert new knife blade, bevel side in, by sliding it under shear plate "D". Make sure slots in knife align with tabs on knife hub and that knife is seated flush on hub. Replace all parts in reverse order and check that all fasteners are tightened securely before resuming operation.

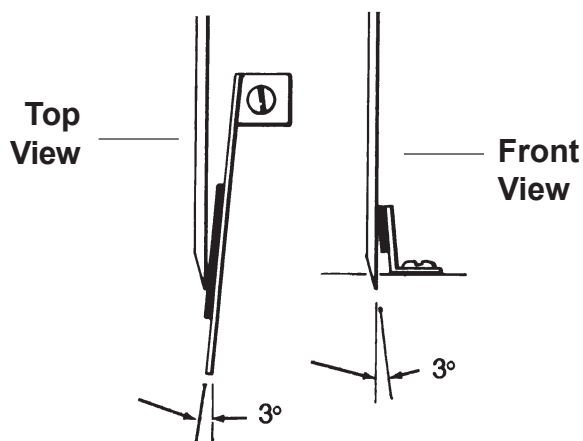
NOTE: It is not necessary to remove cutting machine from track or shear plate from machine when replacing knife.

Shear Plate Replacement

Remove knife as described above. Align Falcon Cutter with screw "E" accessible through slot in track. Remove screw "E" and shear plate "D". Replace with new shear plate and reassemble in reverse order. Adjust shear plate and check tightness of "E" before resuming operation.

Shear Plate Adjustment

After replacing shear plate, adjust angle of spring so carbide contacts knife edge at a 3 degree angle. Refer to diagrams for explanation of proper angle.



Sharpener Replacement

Remove knife as described above. Insert screwdriver into slotted head of sharpener button "F" and hold bushing "J" in place. Turn screw counterclockwise to remove button "F" and spring "G". Remove screw "I" to separate bushing "J", spring washer "K" and emery wheel "L". Replace emery wheel and reassemble in reverse order. Check that screw "F" is tightened securely.

Lubrication of Knife Gear

Knife gear "Z" should be removed and replaced if necessary or repacked with grease every three months.

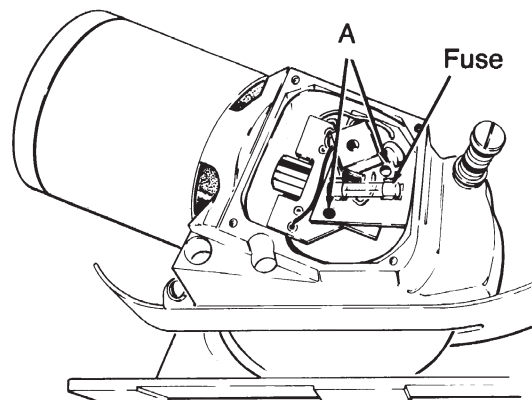
Remove knife as described above, to expose bearing retainer plate 79C12-286. Insert a 10-32 x 1 1/2" screw into center of knife flange "X" so that gear, bearing and knife flange can be removed as one unit. Remove three (3) screws "W" and lift out gear assembly. Inspect and replace gear "Z" if necessary or repack gear teeth ONLY with grease. Reassemble in reverse order making sure that bearing "Y" is seated squarely before securing knife flange "X" and retainer plate.

IMPORTANT: Use of too much grease when repacking knife gear "Z" may result in undue strain on knife motor.

Motor Brush Replacement

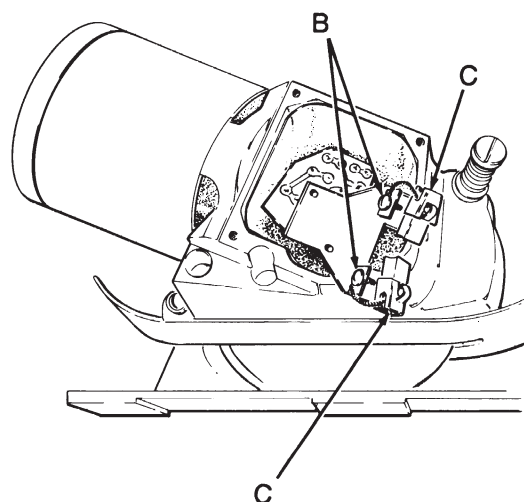
Remove four (4) screws from cover plate. Remove cover plate and insulation material using care not to damage the insulation. Remove two (2) screws "A" and carefully lift out combined circuit board and motor brush card assembly. DO NOT disconnect wires. Turn brush card over, loosen two (2) screws "B" and pull motor brush pigtails from under fasteners. Slide brushes out from guides.

Insert new brushes so that beveled corner at wire pigtail faces slot "C" in brush guide. Brush pigtail runs from slot "C" to screw fastener "B". Wrap pigtail around screw "B" and tighten screw. Turn circuit board/brush card assembly back to original position. Spread brushes enough to slide over commutator and work board/card assembly down inside cavity until brushes "snap" over commutator. Secure board/card assembly with two (2) screws "A" and carefully replace insulation material. Fasten cover with four (4) screws.



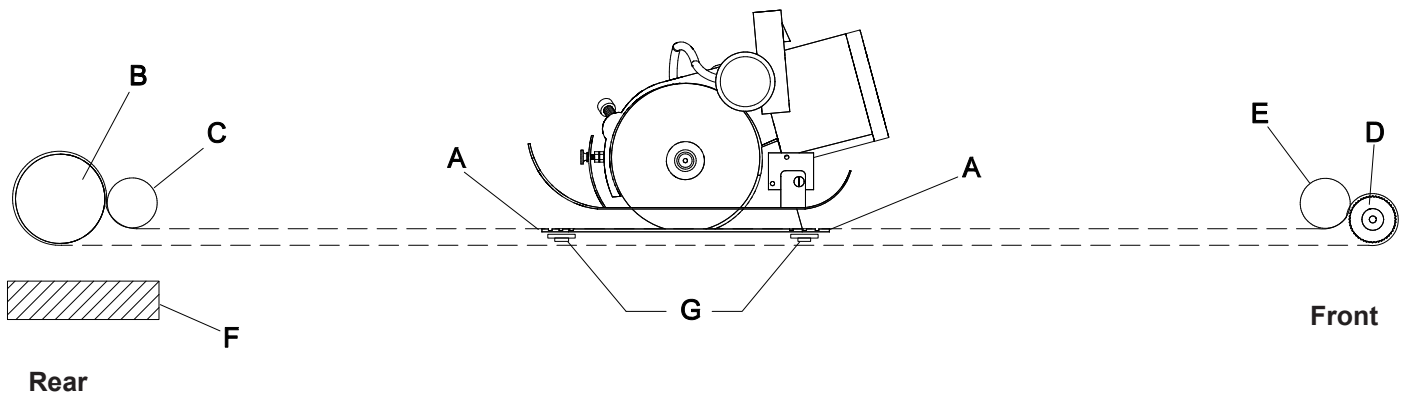
Fuse Replacement

Fuse is visible when cover plate and cover insulation are removed. Take out fuse and replace with fuse of identical rating. Replace insulation and side cover.



Eastman®

Over a Century of Cutting Expertise



Traverse Belt Replacement and Falcon Cutter Installation

Remove five (4) screws holding pulley cover and pull cover off to expose pulley. Remove four (4) screws holding idler cover and pull off cover to expose idler pulley. Remove old belt by loosening clamps "A" on cutting machine baseplate and pull belt out thorough end of track. Loosen idler support "F" and swing out of way by removing one (1) screw. DO NOT disconnect wires.

Remove cutter at this time if desired. Install disc and bearing "G" in standard of cutter using grease to hold in place. Insert standard in track with knife pointing toward rear idler end of track. Feed new traverse belt thorough track from rear with teeth facing up. DO NOT twist belt. Pull belt around drive pulley "D" and under idler pulley "E". Fasten belt at clamp "A" on front of cutter. Reposition idler and fasten in closest position. Feed timing belt around pulley "B" and under pulley "C". Pull tight and cut to proper length and fasten under clamp "A" at rear of cutter. Loosen idler support "F", apply tension and retighten to track.

Lubrication

Knife gear should be removed and filled with special Eastman libriko grease every three months (excessive grease will cause overheating). Felt wicking "L" and "M" should be oiled monthly.

Pneumatic Motor

(Recommended for heavy weight material)

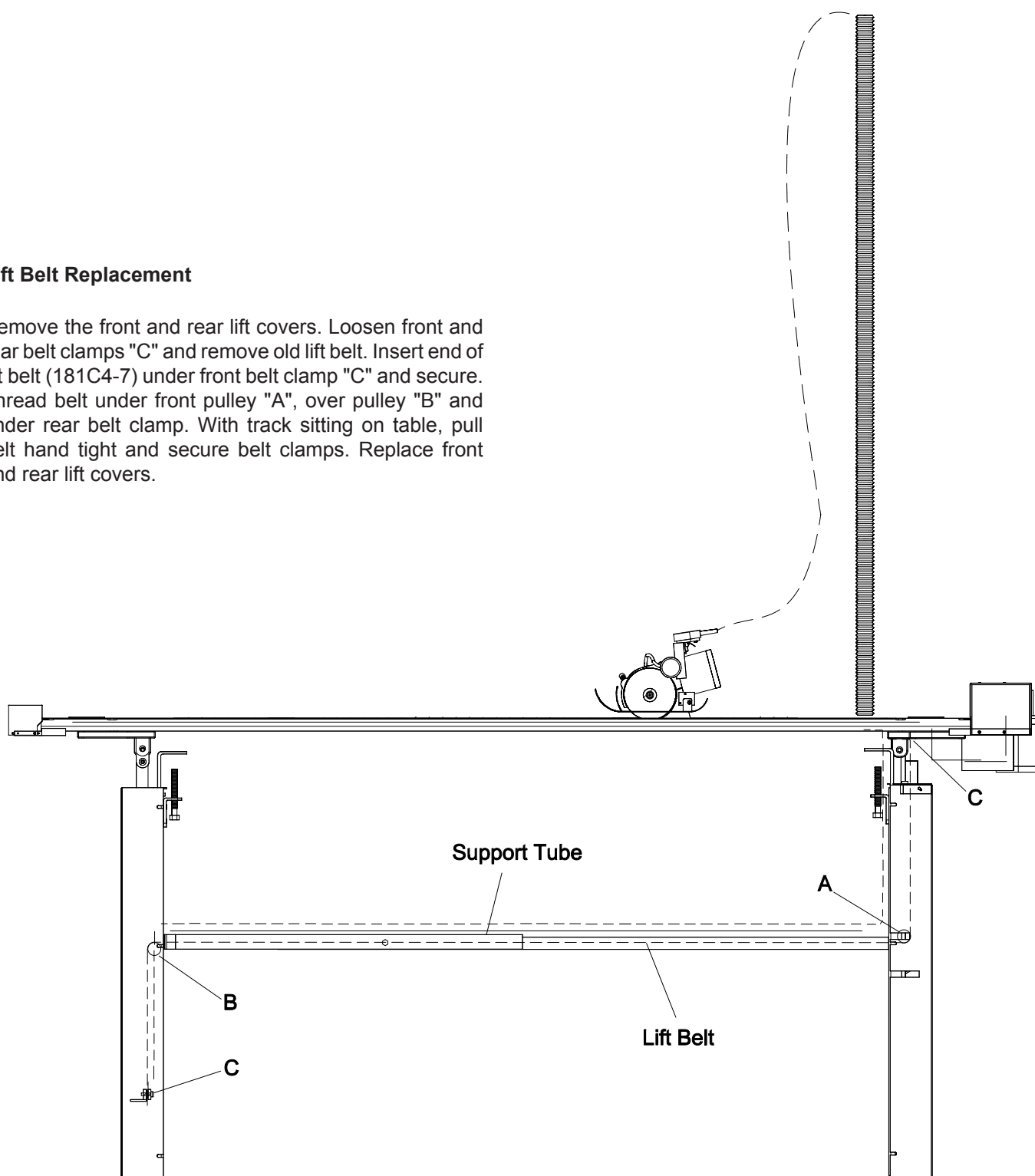
For best performance, an air pressure of 90 psi is recommended. An air line oiler and filter delivering two to three drops per minute of SAE 5 weight spindle oil is recommended.

* This air line filter and lubricator is mounted inline with the air inlet hose. Check your air line for presence of any foreign particles before installing machine.

*Not sold with machine.

Lift Belt Replacement

Remove the front and rear lift covers. Loosen front and rear belt clamps "C" and remove old lift belt. Insert end of lift belt (181C4-7) under front belt clamp "C" and secure. Thread belt under front pulley "A", over pulley "B" and under rear belt clamp. With track sitting on table, pull belt hand tight and secure belt clamps. Replace front and rear lift covers.



Eastman®

Over a Century of Cutting Expertise

AFT II - Familiarization

Your Eastman **Auto Track Falcon II** has been carefully designed to provide many hours of trouble free operation. The comprehensive exploded part illustrations have been carefully prepared to enable you to easily order replacement parts, as required. Replacement components for this machine can be ordered thorough your nearest Eastman representative, or directly from the Eastman factory.

Index

EXPLODED PARTS ILLUSTRATIONS

The exploded part illustrations and part lists in this section have been divided into major assemblies as follows:

Pictorial Index, Options.....	Page 10-11
Digital Control Box Assembly	Page 12-13
Falcon Cutter Assembly.....	Page 14-15
Track Assembly	Page 18-19
Drive Motor Assembly	Page 20-21
Front Lift Assembly	Page 22-23
Rear Lift Assembly.....	Page 24-25
Non-Lift Clamp Assembly	Page 26-27
Mast Assembly	Page 28-33
Electrical Diagrams.....	Page 35-36

IMPORTANT: Always specify machine model and serial number when ordering parts for faster more efficient service.

ITEM	PART NO.	DESCRIPTION	QTY.
1	307C18-4	Screw, Button Hd 1/4-20 x 1	4
2	12C15-97	Washer, Flat 1/4	4
3	12C1-19	Washer, Lock 1/4	4
4	4C2-58	Nut, Hex 1/4-20	4
5	53C11-191	Rear Cover	1
6	300C15-2	Screw, Round Hd 10-32 x 1/4	12
7	826C1-18	Support Tube 1-1/4" Square	1
8	826C1-17-MS	Support Tube 1" Square	1
9	335-39-16	Bolt, Skt Hd 3/8-24 x 1 1/2	1
10	206-39	Nut, Jam 3/8-24	1
11	783C1-32	Cable Assy, Lift - 4' Length	1
	783C1-32E	Cable Assy, Lift - 10' Length	*
	783C1-32E-8	Cable Assy, Lift - 8' Length	*
	783C1-33	Cable Assy, No Lift	*
12	306C80-201	Screw, Self - Tapping	8
13	53C11-189	Front Cover	1
14	203C1-4	Rubber Channel	2
15	53C11-190	Top Cover, Front	1
16	300C15-2	Screw, Rd Head 10-32 x 1/4	12

* - Optional

MS - Machine Size

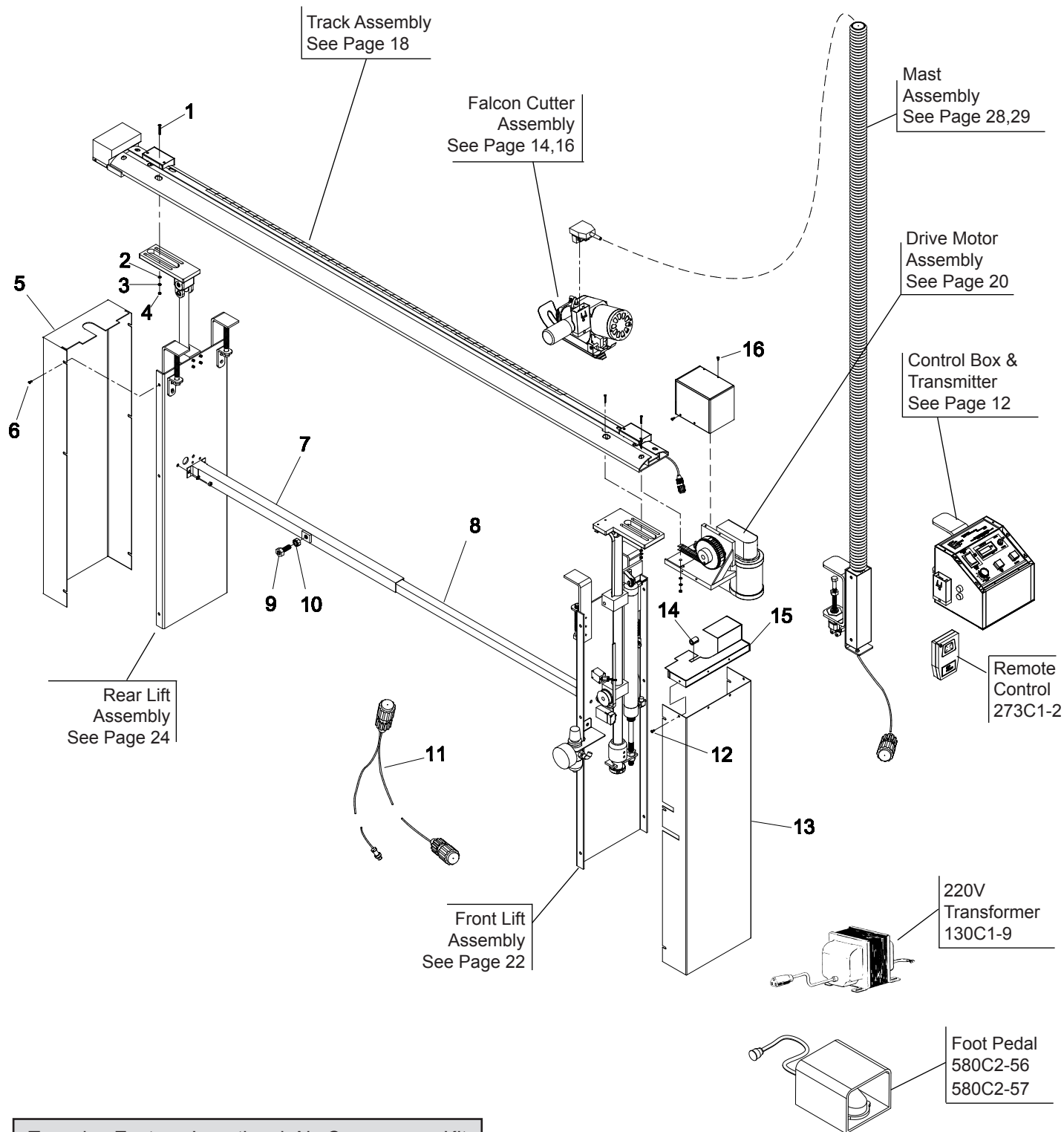
Auto Track Falcon II Optional Components

PART NO.	DESCRIPTION
273C1-2	Remote Control
130C1-9	220 Volt Transformer
580C2-56	25' Footpedal Start Assy
580C2-57	50' Footpedal Start Assy
820C1-88	Voltage Stabilizer
820C1 80	Air Compressor

Not
Shown

NOTE:

Please specify model and serial number of machine when ordering parts.
Item numbers are for reference only.
Please specify PART NUMBERS when ordering replacement parts.



Eastman®

Over a Century of Cutting Expertise

Control Box

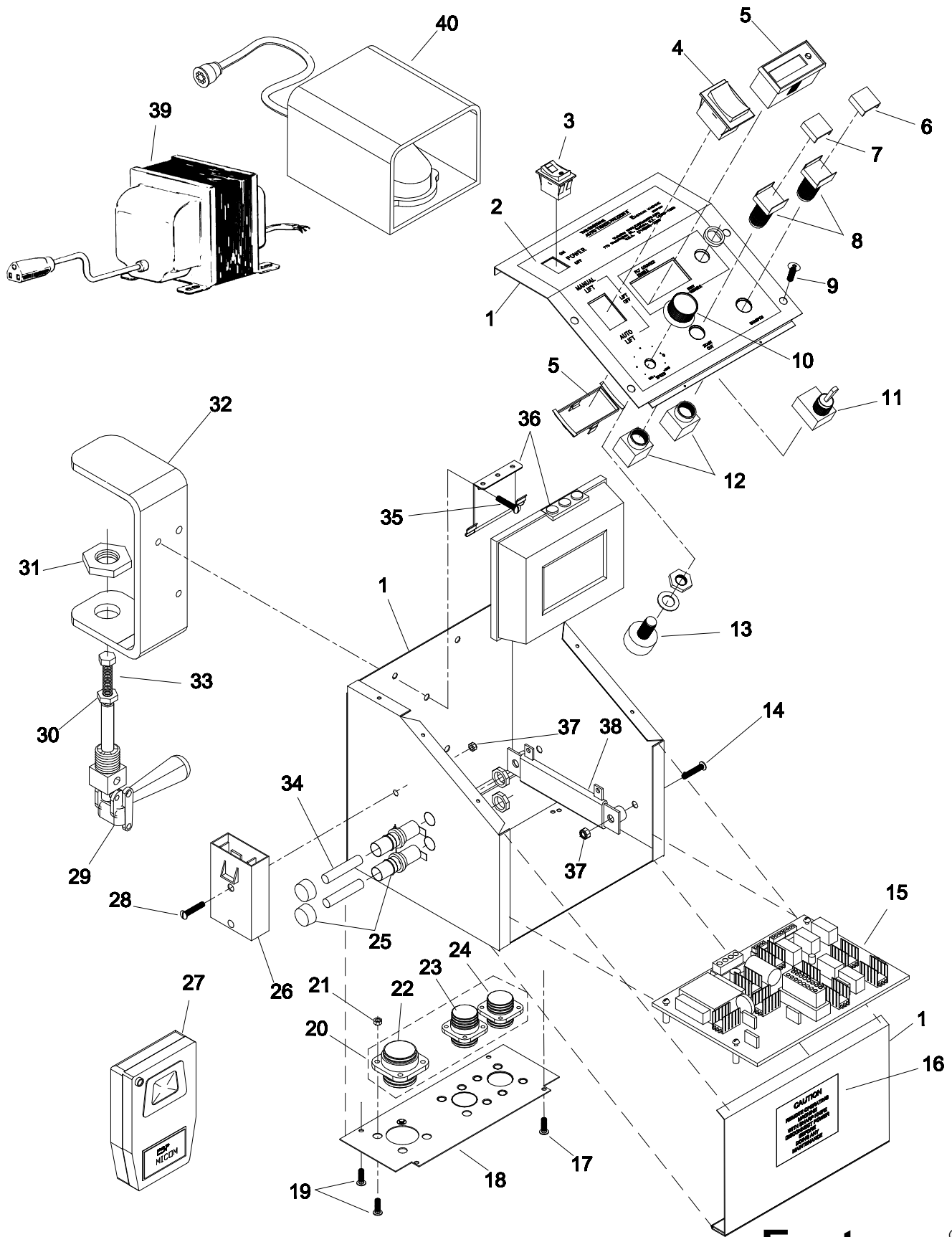
707C2-15

ITEM	PART NO.	DESCRIPTION	QTY.
1	182C14-12	Control Box, (Shell only) ATF	1
2	236C1-163	Decal, Auto Track Falcon II	1
3	11-4188	Switch, Power 110v	1
4	580C1-217	Switch, Lift	1
5	194C1-6	Counter	1
6	11-4194	Lens, White	1
7	11-4195	Lens, Green	1
8	11-4190	Actuator, Switch	2
9	313-86-4	Screw, Rd Hd 6-32 x 5/16	12
10	9079-008	Knob, Potentiometer	1
11	11-4185	Switch, enable / disable	1
12	11-4192	Contact Block	2
13	11-1801	Potentiometer, 50k	1
14	300C15-7	Screw, Rd Hd 10-32 x 5/8	2
15	660C4-19	PC Board Assembly	1
16	236C1-110	Lable, Caution	1
17	300C10-2	Screw, Rd Hd 6-32 x 1/4	4
18	276C2-40	Plate, Connectors,Control Box	1
19	300C10-4	Screw, Rd Hd 6-32 x 3/8	16
20	660C3-209	Harness Assembly	1
21	203-86	Nut, Hex 6-32	18
22	11-4738	Connector, 14 pin Sq Flange	1

ITEM	PART NO.	DESCRIPTION	QTY.
23	11-4737	Connector, 4 pin/F Sq Flange	1
24	11-4734	Connector, 8 pin Sq Flange	1
25	11-1312	Fuse Holder	1
26	508C1-102	Bkk Term. Assy 110 V	1
27	273C1-2	Remote Control (optional)	1
28	302C15-8	Screw,10-32 x 1 1/8 Flat Head	2
29	9088-006	Clamp Push/Pull 3/4 Dia	1
30	203-36	Nut Hex 5/16-18	1
31	217-52	Nut, Lock 3/4-16	1
32	BC-30436	Clamp Support Bracket	1
33	335-36-36	Scr. Skt Hd Cap 5/16-18x2.25	1
34	11-1316	Fuse, MDQ-2	2
35	333-34-6	Screw, Round Head 1/4-20 x .375	2
36	830C1-89	Receiver, assembly	1
37	203-102	Hex Nut, 10-32	4
38	11-541	Resistor,10 ohm/55w	1
39	130C1-9	Transformer, 220v only (optional)	1
40	580C2-56	Footpedal Start Asy. 25' (optional)	1
	580C2-57	Footpedal Start Asy. 50' (optional)	1

NOTE:

Please specify model and serial number of machine when ordering parts.
Item numbers are for reference only.
Please specify PART NUMBERS when ordering replacement parts.



Eastman®

Over a Century of Cutting Expertise

Eastman®

Falcon Cutter

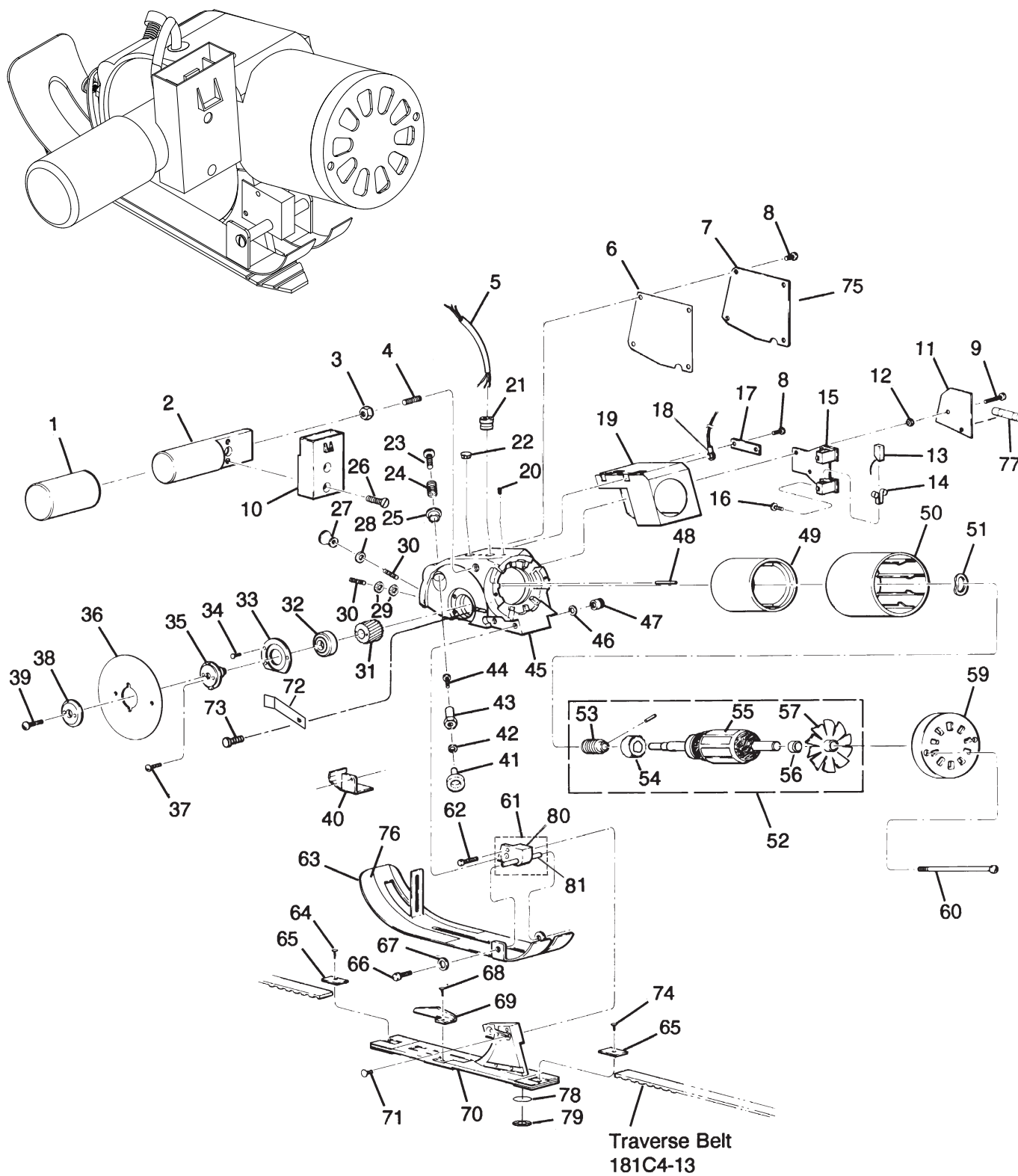
519C1-1477

ITEM	PART NO.	DESCRIPTION	QTY.
1	53C11-151	Cover For Counterweight	1
2	136C1-27	Counterweight	1
3	4C2-141	Hex Jam Nut 5/16-18	1
4	15C13-65	Stud for Counterweight	1
5	145C2-8	Cord, Special, #18-3 Wire 10"	1
6	8C15-4	Cover, Insulation	1
7	53C2-113	Side Cover	1
8	305C8-1	Screw, Binding Head 4-40 x 1/4	7
9	300C8-2	Screw, Round Head 4-40 x 1/2	2
10	508C1-102	Terminal Block	1
11	830C1-6	Circuit Board	1
12	4C1-198	Nut, Hex 4-40	2
13	708C1-16	Motor Brush	2
14	34C10-172	Brush Spring	2
15	830C1-7	Brush Board Assembly	1
16	20C13-103	U-Lock Screw	2
17	50C7-27	Cord Clamp	1
18	199C1-19	Wire Lug	1
19	8C13-81	Cavity Insulation	1
20	309C15-2	Setscrew, #10-32 x 1/4	3
21	21C14-6	Bushing, Strain Relief	1
22	54C4-44	Plug	1
23	20C12-160	Sharpener Screw	1
24	34C10-158	Sharpener Spring	1
25	21C6-4	Sharpener Bushing	1
26	302C15-8	Screw, Flat Head 10-32 x 1 1/8	2
27	20C5-21	Clamp Screw	1
28	12C15-95	Washer, Flat #6	2
29	4C2-82	Nut, Hex 6-32	2
30	20C13-56	Setscrew, 6-32 x 3/4	2
31	87C7-40	Knife Gear, Worm - Phenolic	1
32	90C6-53	Ball Bearing, Knife Flange	1
33	79C12-286	Bearing Retainer Plate	1
34	302C8-1	Screw, Flat Head 4-40 x 3/8	3
35	83C4-26	Knife Flange	1
36	80C1-141	4" Knife, Carbon	1
37	301C5-1	Screw, Fillister Head 3-48 x 3/4	2
38	53C11-107	Knife Flange Cover	1
39	300C15-3	Screw, Round Head 10-32 x 3/8	1

NOTE:

Please specify model and serial number of machine when ordering parts.
Item numbers are for reference only.
Please specify PART NUMBERS when ordering replacement parts.

ITEM	PART NO.	DESCRIPTION	QTY.
40	53C2-131	Cover, Switch Hole	1
41	541C1-17	Emery Wheel	1
42	12C15-57	Spring Washer	1
43	21C5-5	Sharpener Bushing, Hex	1
44	301C10-9	Screw, Fillister 6-32 x 3/16	1
45	528C4-11	Housing With Cover Assembly	1
46	12C1-49	Lock Washer	2
47	4C1-179	Nut, 10-32 Slotted	2
48	17C15-133	Roll Pin	2
49	829C1-3	Magnet Ring	1
50	61C2	Motor Shell	1
51	12C15-106	Spring Washer	1
52	542C1-109	Armature Assembly	1
53	87C7-45	Worm, 4 Lead	1
54	90C6-48	Ball Bearing, Front	1
55	190C1-5	Armature, 110V	1
56	90C6-50	Ball Bearing, Rear	1
57	10C1-47	Motor Fan	1
58	Not Used	-	-
59	90C1-165	Bearing Housing	1
60	20C3-31	Tie Rod Screw	2
61	833C6-3	Bracket Ass'y, Pressure Foot	1
62	308C10-2	Screw, Socket Head 6-32 x 1/2	2
63	68C2-17	Pressure Foot	1
64	307C10-5	Screw, Button Head 6-32 x 3/16	1
65	79C12-319	Plate Belt Clamp	2
66	300C12-2	Screw, Round Head 8-32 x 1/4	2
67	12C1-21	Washer, Internal Tooth Locking	2
68	305C8-4	Screw, Binding Head 4-40 x 1/8	1
69	726C1-28	Shear Plate With Blank	1
70	505C2-103	Base Plate Assembly	1
71	302C15-19	Screw, Socket Head 10-32 x 1	1
72	79C12-317	Lint Deflector	1
73	305C8-4	Screw, Binding Head 4-40 x 1/8	1
74	308C10-7	Screw, Socket Head 6-32 x 3/16	1
75	236C1-110	Label, Caution	1
76	211C1-12	Tape, Warning Orange	1
77	262C1-16	Fuse, 110V	1
78	115C1-15	Wear Disc	4
79	90C4-81	Bearing	4
80	62C2-2	Pressure Foot Bracket	1
81	55C4-105	Handle Lever Spacer	1



Eastman®

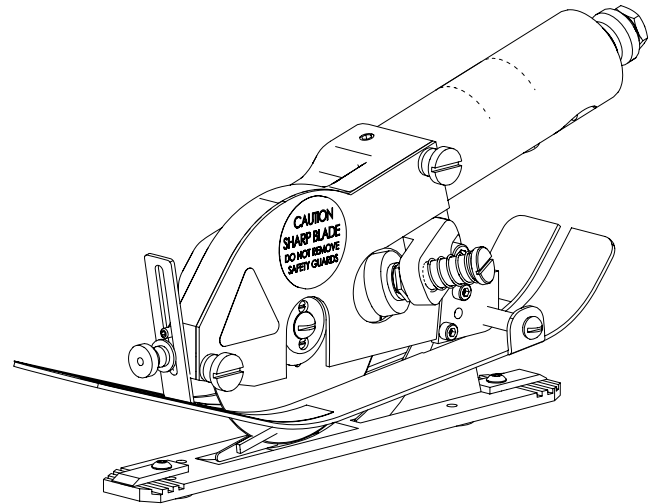
Over a Century of Cutting Expertise

Falcon Cutter, Pneumatic

519C1-1514

CUTTING KNIVES OPTIONS

Part no.	Description
80C1-84 1	3 1/4" Round Knife, Plain
80C1-84 2	3 1/4" Round Knife, High Speed
80C1-84 9	3 1/4" Round Knife, Teflon
80C1-145 2	3 1/4" Hex Knife, Plain
80C1-145 5	3 1/4" Hex Knife, Grooved
80C1-145 9	3 1/4" Hex Knife, Teflon



ITEM	PART NO.	DESCRIPTION	QTY.
1	88C1-213	3-1/4" Std Falcon IV	1
2	25C4-199	Side Knife Guard, ATF-II	1
3	62C2-2	Bracket Pressure Ft	1
4	35C5-67	Brkt Sharp, ATF-II	1
5	541C1-17	Wheel Emery Assm	1
6	517C1-842-3	Motor, Atf-lip, 20000 Rpm, Op	1
7	21C5-5	Bushing Shrp Trac II	1
8	20C12-160	Scr Shrp Btn Trac II	1
9	79C12-286	Plt Retaining Fal IV	1
10	726C1-43	Shear Plt Assy, ATF-II	1
11	20C7-1	Screw, Thumb	2
12	410-060	Washer, Flt. #6	1
13	20C5-21	Screw Clamp	1
14	344-34-4	Screw, Skt. Set 1/4-20 X 1/4	3
15	402-010	Washer, Lock #10	2
16	335-86-8	Screw, Skt. Hd. #6-32 X 1/2	2
17	335-102-8	Screw, Skt. Hd. #10-32 X 1/2	1
18	305C8-4	Screw, Binding Hd. #4-40 X 1/8	1
19	90C6-53	Bearing Ball	1
20	53C11-107	Cover Knife Flange	1
21	18C6-35	Ring Snap Chick	1
22	68C2-17	Shoe Press Foot	1
23	55C4-98	Spacer Brg Rettrac II	1
24	83C4-26	Flange Knf Robin	1

ITEM	PART NO.	DESCRIPTION	QTY.
25	653C1-1	Worm W Shaft&Brg Chk	1
26	87C7-37	Gear Fibre Fal III	1
27	301C5-1	Screw, Fil. Hd. #3-48 X 3/4	2
28	300C15-3	Screw, Rd. Hd. #10-32 X 3/8	1
29	822C1-1	Coupling Falcon	1
30	12C15-57	Washer, Spring	1
31	34C10-158	Spring Shrp Trac II	1
32	55C4-105	Spacer Hndl Lvr Cd3I	1
33	300C12-2	Screw, Rd. Hd. #8-32 X 1/4	2
34	402-080	Washer, Lock #8	2
35	505C2-112	Base Plate Assy, ATF-II	1
36	115C1-15	Wear Disc, Bearing Skate	4
37	90C4-81	Bearing Needle .59X.19X.078Th	4
38	4C1-179	Nut Bearing Screw	2
39	79C1-119	Falcon Decal Air	1
40	79C2-61	PLT Caution	1
41	211C1-12	Tape, Warning Orange	1ft
42	236C1-177	Warning Label, 627/629/631/63	1
43	20C13-56	Screw, Skt. Set #6-32 X 3/4	1
44	309C10-3	Screw, Skt. Set #6-32 X 1/2	1
45	302C8-1	Screw, Flt. Hd. #4-40 X 3/8	3
46	191C1-26	Pad Knife Wipe Chk P	1
47	332-102-16	Screw, Skt. Flt. Hd. #10-32 X 1	2
48	301C10-9	Screw, Fil. Hd. #6-32 X 3/16	1
49	301C10-1	Screw, Fil. Hd. #6-32 X 1/4	2
50	79C12-319	Plate Belt Clamp	2
51	260C2-9	Bushing, 1/4 NPT X 1/8 NPT	1
52	511-3-3	Roll Pin	1
53	817C1-1	Muffler Buzzaird	1
54	817C1-2	Air Hose Buzzaird	1
55	100-11-6	Male Quick Disconnect 1/4" NPT	1
56		See Chart	

NOTE:

Please specify model and serial number of machine when ordering parts.
Item numbers are for reference only.
Please specify PART NUMBERS when ordering replacement parts.



17

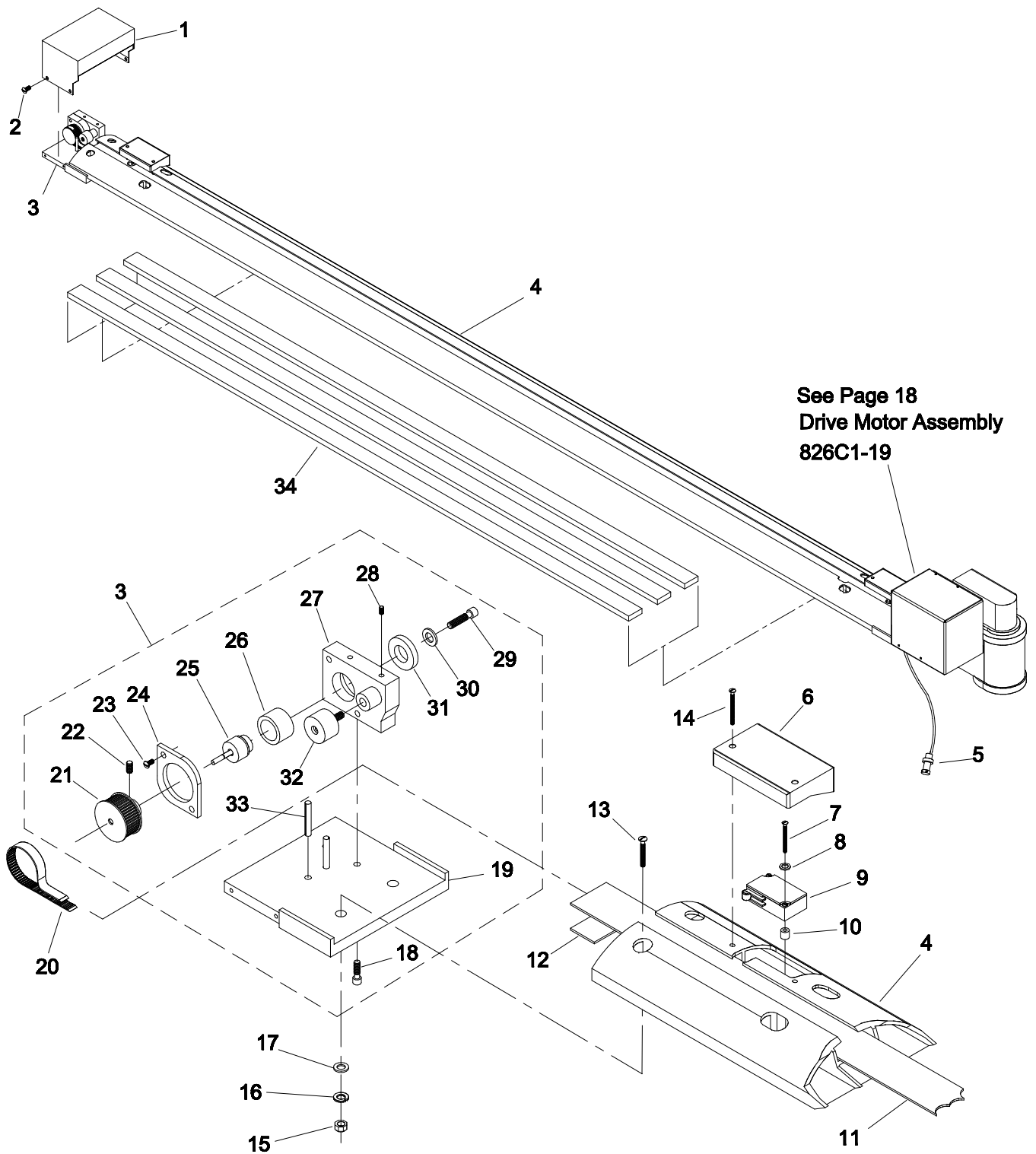
Track Assembly

823C1-58-MS

ITEM	PART NO.	DESCRIPTION	QTY.
1	53C11-188	Idler Cover	1
2	305C10-1	Screw, Binding Head 6-32 x 1/4	8
3	833C3-3	Idler Block Assembly	1
4	193C1-26-MS	Track	1
5	660C3-210	Track Wiring Harness Ass'y	1
6	53C11-186	Limit Switch Cover	2
7	313-81-16	Screw, Round Head 4-40 x 1	4
8	410-040	Washer, Flat #4	4
9	580C1-161	Microswitch	2
10	11-1964	Spacer	4
11	113C3-16	Wear Strip	1
12	211C1-18	Grip tape x 1	2
13	307C18-4	Screw, Button Head 1/4-20 x 1	4
14	300C10-8	Screw, Binding Head 6-32 x 3/4	4
15	4C2-58	Nut, Hex 1/4-20	4
16	12C1-19	Washer, Lock 1/4	4
17	12C15-97	Washer, Flat 1/4	4
18	308C15-1	Screw, Socket Head Cap 10-32x5/8	2
19	119C4-81	Idler Bracket Support	1
20	181C4-13	Traverse Belt	*
21	152C1-43	Timing Belt Pulley	1
22	309C18-5	Set Screw, 1/4-20 x 3/8	2
23	300C12-6	Screw, Round Head 8-32 x 1/2	2
24	79C12-314	Retainer Plate	1
25	11C12-126	Idler Shaft	1
26	90C6-53	Bearing	1
27	62C16-342	Bracket Idler	1
28	309C15-2	Set Screw, 10-32 x 1/4	1
29	308C15-2	Screw, Socket Hd Cap 10-32 x 1/2	1
30	12C10-2	Washer, Flat, Special #10	1
31	12C3-14	Shaft Retainer	1
32	9028-001	Cam Follower, Lifting Block	1
33	511-6-20	Roll Pin .187 dia x 1.125 lg	2
34	211C1-2-MS	Foam Tape	3

MS - Machine Size

* - Sold per Foot



See Page 18
Drive Motor Assembly
826C1-19

$(MS) \times 2 + 16 = \text{Belt Length}$

12

NOTE: See Page 8 For Traverse Belt
Threading Diagram.

Eastman®

Over a Century of Cutting Expertise

Drive Motor

826C1-19

ITEM	PART NO.	DESCRIPTION	QTY.
1	53C11-187	Cover, Driver ATF II	1
2	300C15-2	Screw, Round Hd Slotted 10-32 x 1/4	4
3	152C1-47	Pulley, Timing Belt	1
4	309C15-7	Setscrew, 8-32 x 3/4	2
5	9028-001	Cam Follower, Lifting Block	1
6	511-6-20	Roll Pin .187 Dia x 1-1/4	2
7	308C12-4	Screw, Socket Hd 8-32 x 3/4	4
8	12C1-21	Washer, Lock #8	4
9	62C16-341	Mounting Bracket	1
10	86C7-50	Cap, Motor Brush	2
11	36C1-16	Motor Brush	2
12	517C1-1277	Gear Motor, ATF II	1
13	236C1-110	Label, Auto Falcon	1
14	62C16-340	Bracket, Motor, Box Mtg	1
15	315-86-6	Screw, Round Hd Slotted 6-32 x 3/8	4
16	660C3-211	Harness Assembly, ATF II	1
17	182C14-13	Box, Motor Electrical ATF II	1
18	4C2-82	Nut, Hex 6-32	4
19	402-060	Washer, Lock #6	4
20	333-102-4	Screw, Round Hd Socket 10-32 x 1/4	2
21	335-86-6	Screw, Socket Hd. 6-32 x 3/8	2
22	402-010	Washer, Lock #10	1
23	11-988-13	Terminal Ring #10	1
24	11-1797-1	Pins, Male	3
25	11-1797	Connector, Square Flange	1
26	11-4706	Pins, Male	4
27	215C1-21	Connector, Round	1
28	344-102-4	Setscrew, 10-32 x 1/4	1

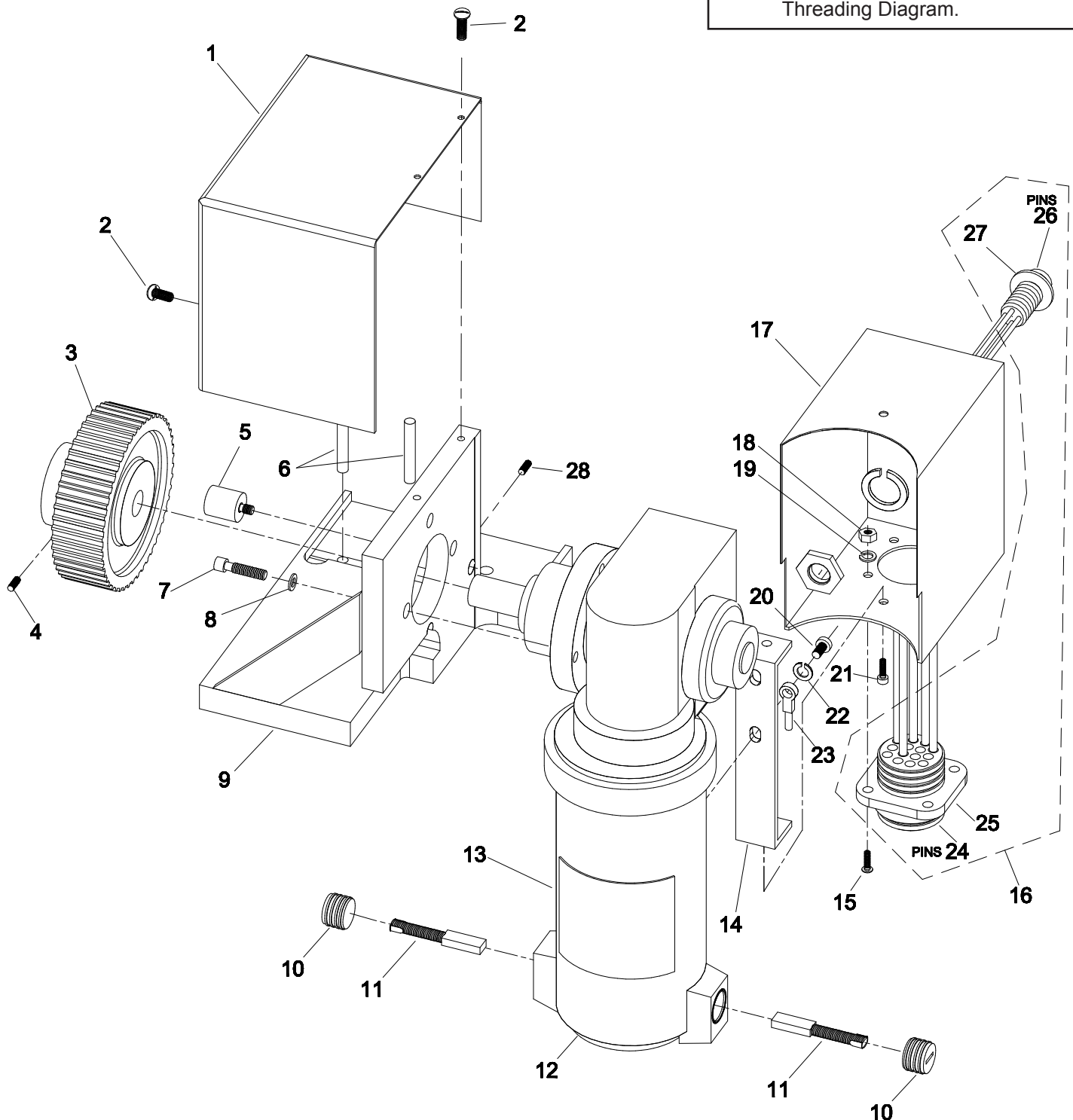
MS - Machine Size

* - Sold per Foot

NOTE:

Please specify model and serial number of machine when ordering parts.
Item numbers are for reference only.
Please specify PART NUMBERS when ordering replacement parts.

NOTE: See Page 8 For Traverse Belt Threading Diagram.



CAUTION

To fasten motor bracket to motor, use two (2) flat hd screws (item # 20). Improper length screws may damage the motor.

Eastman®

Over a Century of Cutting Expertise

Front Lift Assembly

840C1-10

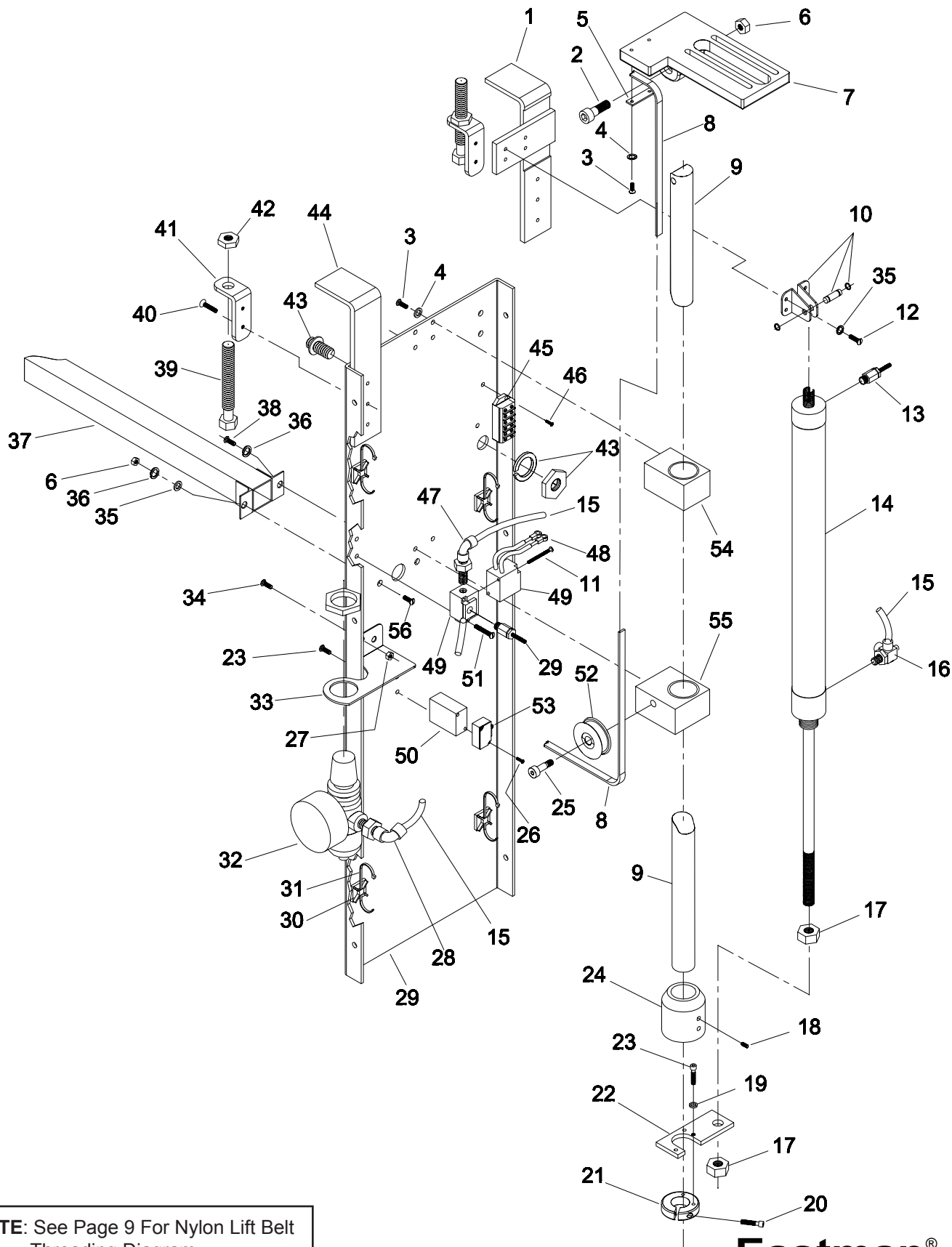
ITEM	PART NO.	DESCRIPTION	QTY.
1	833C6-6	Cylinder Hanger Bracket	1
2	311C14-4	Screw, Shldr Skt 5/16 x 1-1/4	1
3	308C15-2	Screw, Socket Head Cap	
		10-32 x 1/2	6
4	12C15-14	Washer, Flat #10	8
5	50C11-40	Belt Clamp	1
6	4C2-58	Nut, Hex 1/4-20	3
7	833C2-5	Front Lift Bracket	1
8	181C4-7-MS	Nylon Lift Belt	1
9	70C4-57	Guide Tube	1
10	275C4-1	Pivot Bracket Assy.	1
11	300C8-11	Screw, Round Hd 4-40 x 1-1/4	2
12	308C18-9	Screw, Skt Hd Cap 1/4-20 x 1/2	5
13	251C3-2	Speed Control Muffler	2
14	275C1-1	Pneumatic Cylinder	1
15	C20-1	Tubing 1/4 O.D.	AR
16	251C3-4	Speed Control Valve	1
17	206-41	Nut, Jam 7/16-20	2
18	309C14-5	Screw, Set 10-24 x 3/8	2
19	12C1-21	Washer, Lock #8	2
20	308C20-1	Screw, Skt Hd Cap 1/4-28x5/8	1
21	5C5-25	Clamping Collar	1
22	62C16-339	Collar Bracket, Front	1
23	308C12-2	Screw, Skt Hd Cap 8-32 x 1/2	4
24	64C1-19	Cam	1
25	355-38-8	Screw, Shoulder Skt 3/8 x 1/2	1
26	300C8-6	Screw, Round Hd 4-40 x 3/4	2
27	203-102	Nut, 10-32	2

MS - Table Width

ITEM	PART NO.	DESCRIPTION	QTY.
28	260C4-2	Elbow, 1/4 NPT-1/4	1
29	79C12-432	Front Main Plate	1
30	25C1-2	Cable Tie Mount 3/4" sq	4
31	25C1	Cable Tie, 4"	4
32	253C2-3	Regulator & Gauge	1
33	62C16-316	Mounting Bracket	1
34	308C15-3	Screw, Skt Hd Cap 10-32 x 3/8	2
35	12C15-108	Washer, Flat 1/4	2
36	12C1-19	Washer, Lock 1/4	6
37	826C1-17-MS	Support Tube	1
38	308C18-9	Screw, Skt Hd Cap 1/4-20 x 1/2	5
39	310C28-1	Screw, Hex Hd 1/2-13 x 4	2
40	302C18-3	Screw, Flat Hd 1/4-20 x 3/4	4
41	50C11-34	Clamp Base	2
42	206-43	Nut, Lock 1/2-13	2
43	660C3-212	Header, Harness Assy	1
44	62C16-308	Hanger Bracket	1
45	47C5-1	Terminal Strip	1
46	301C10-4	Screw, Fillister Head 6-32x1/2	2
47	260C4-3	Elbow, 1/8 NPT-1/4	1
48	199C1-39	Lug, Wire	2
49	112C2-2	Valve w/ Solenoid	1
50	46C3-54	Microswitch Block	1
51	300C10-10	Screw, Round Head 6-32 x 1	2
52	152C1-48	Pulley	1
53	11-1169	Microswitch	1
54	658C1-6	Bearing Block Assy, Front	1
55	658C1-8	Bearing Block Assy, Rear	1
56	307C18-4	Screw, Button Hd. 1/4-20 x 1	2

NOTE:

Please specify model and serial number of machine when ordering parts.
Item numbers are for reference only.
Please specify PART NUMBERS when ordering replacement parts.



NOTE: See Page 9 For Nylon Lift Belt Threading Diagram.

Eastman®

Over a Century of Cutting Expertise

Rear Lift Assembly

840C1-11

ITEM	PART NO.	DESCRIPTION	QTY.
1	833C2-6	Rear Lift Bracket	1
2	311C14-4	Screw, Shoulder Socket 5/16 x 1-1/4	2
3	211-34	Elastic Stop Nut, Hex 1/4-20	3
4	77C1-71	Connecting Link	2
5	70C4-62	Guide Tube	1
6	658C1-6	Bearing Block Assy, Front	1
7*	181C4-7-MS	Nylon Lift Belt	1
8	658C1-8	Bearing Block Assy, Rear	1
9	355-38-8	Screw, Shoulder Socket 3/8 x 1/2	1
10	152C1-48	Pulley	1
11	308C18-3	Screw, Skt Hd Cap 1/4-20 x 3/4	2
12	308C12-2	Screw, Socket Head Cap 8-32 x 1/2	2
13	12C1-21	Washer, Lock #8	2
14	12C15-78	Washer, Flat #8	2
15	308C15-3	Screw, Socket Head Cap 10-32 x 3/8	2
16	12C1-49	Washer, Lock #10	8

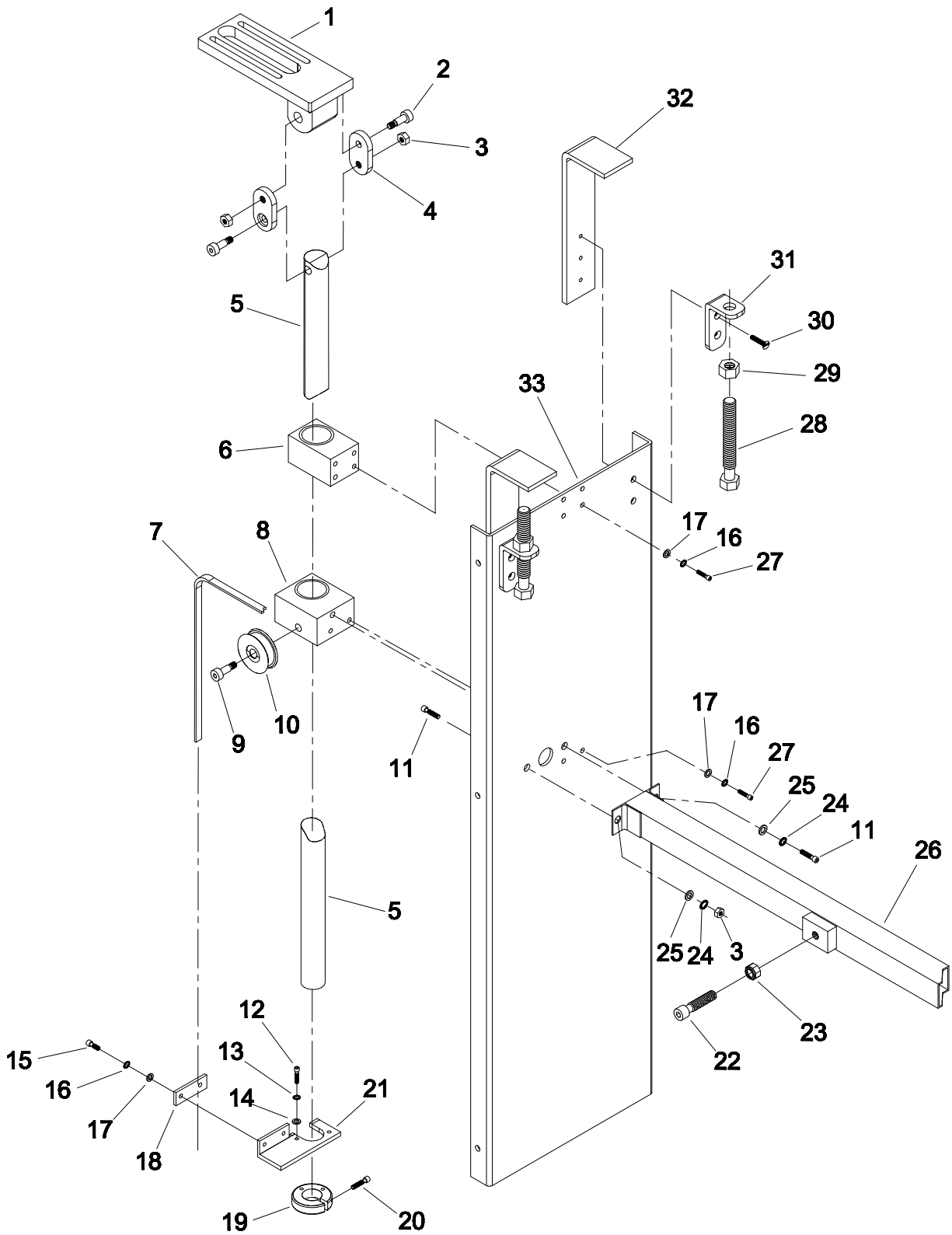
ITEM	PART NO.	DESCRIPTION	QTY.
17	12C15-14	Washer, Flat #10	8
18	50C11-40	Clamp, Belt	1
19	5C5-25	Clamping Collar	1
20	308C20-1	Screw, Socket Head Cap 1/4-28 x 5/8	1
21	62C16-313	Collar Bracket	1
22*	335-39-16	Screw, Skt Hd Cap 3/8-24 x 1.00	1
23*	206-39	Nut, Jam 3/8-24	1
24	12C1-19	Washer, Lock 1/4	2
25	12C15-108	Washer, Flat 1/4	2
26*	826C1-18	Support Tube	1
27	308C15-2	Screw, Socket Head Cap 10-32 x 1/2	6
28	310C28-1	Clamp Screw, 1/2-13	2
29	206-43	Nut, Jam 1/2-13	2
30	302C18-2	Screw, Flat Head 1/4-20 x 1/2	4
31	50C11-34	Clamp Base	2
32	62C16-308	Hanging Bracket	2
33	79C12-433	Back Frame	1

MS - Table Width

* - Not included

NOTE:

Please specify model and serial number of machine when ordering parts.
Item numbers are for reference only.
Please specify PART NUMBERS when ordering replacement parts.



NOTE: See Page 9 For Nylon Lift Belt Threading Diagram.

Eastman®

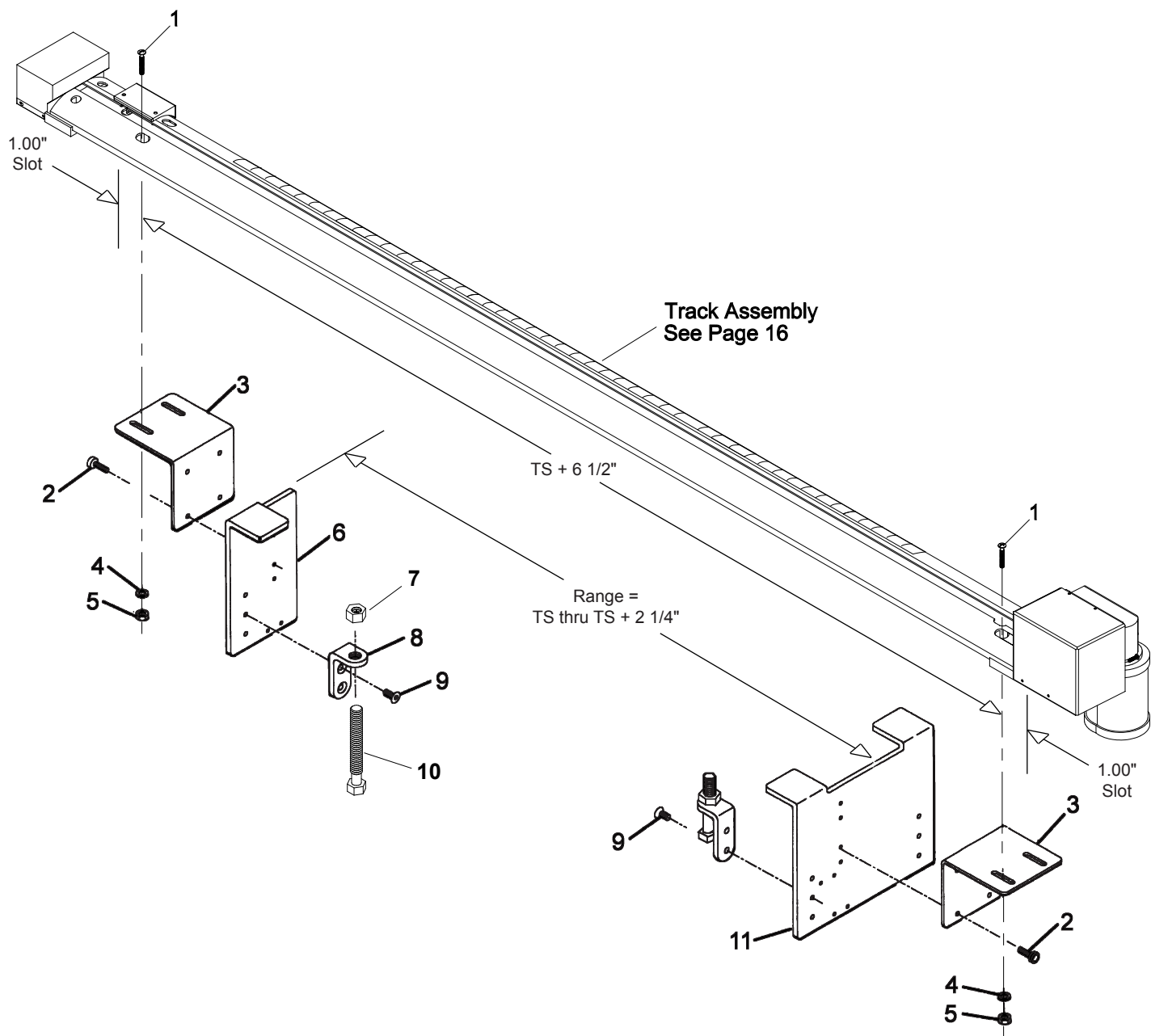
Over a Century of Cutting Expertise

Non-Lift Clamp Assembly

833C2-10

ITEM	PART NO.	DESCRIPTION	QTY.
1	307C18-4	Screw, Button Hd 1/4-20 x 1	4
2	300C15-3	Screw, Rd Hd Cap 10-32 x 3/84	
3	119C4-70	Support Brkt	2
4	12C15-97	Washer, Flat 1/4	4
5	4C2-58	Nut, Hex 1/4-20	4
6	79C12-321	Lift Support Plate, Rear	1
7	206-43	Nut, Jam 1/2-13	3
8	50C11-34	Clamp Base	3
9	302C18-2	Screw, Flat Hd 1/4-20 x 1/2	6
10	310C28-1	Screw, Hex Hd 1/2-13 x 4	3
11	79C12-331	Lift Support Plate, Front	1

MS - Machine Size



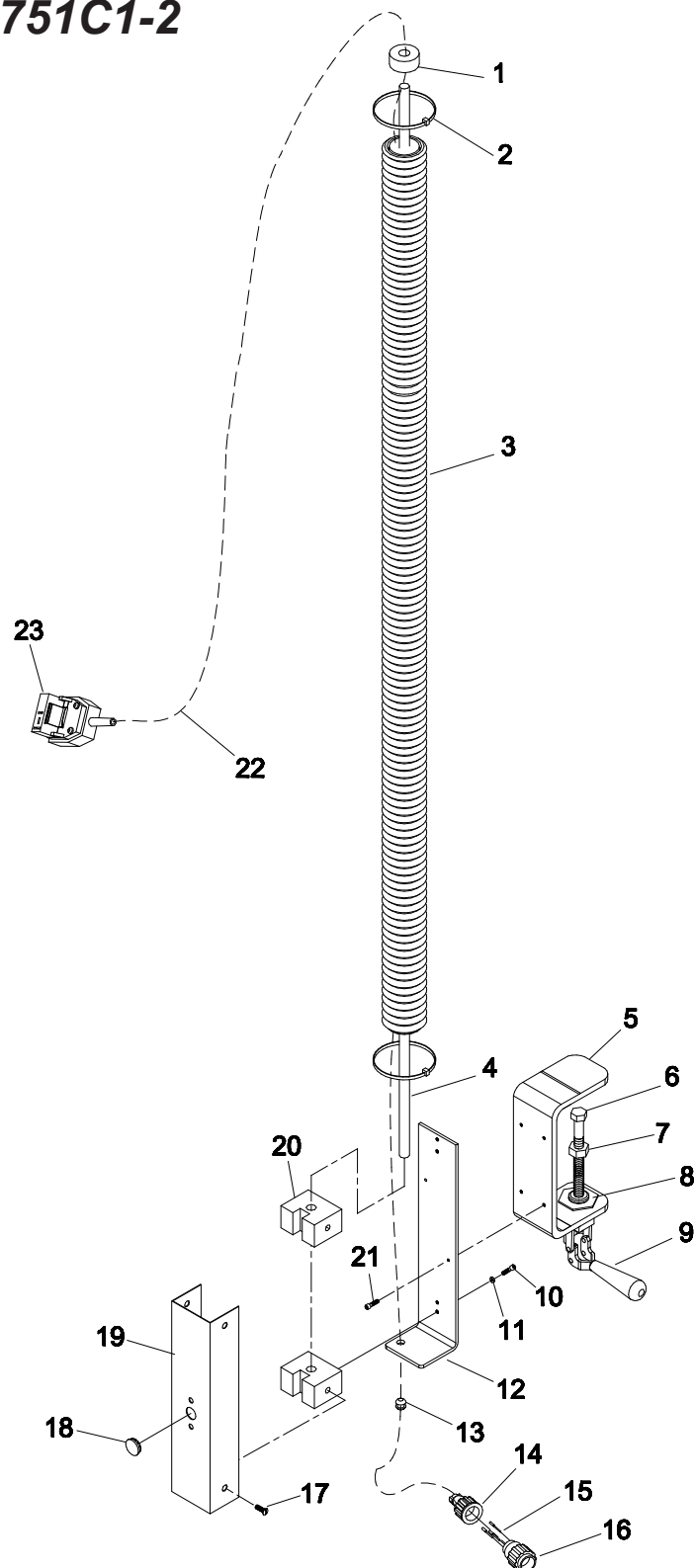
Note: TS - Table Size

Eastman®

Over a Century of Cutting Expertise

Mast Assembly

For 90" Machine and Smaller
751C1-2



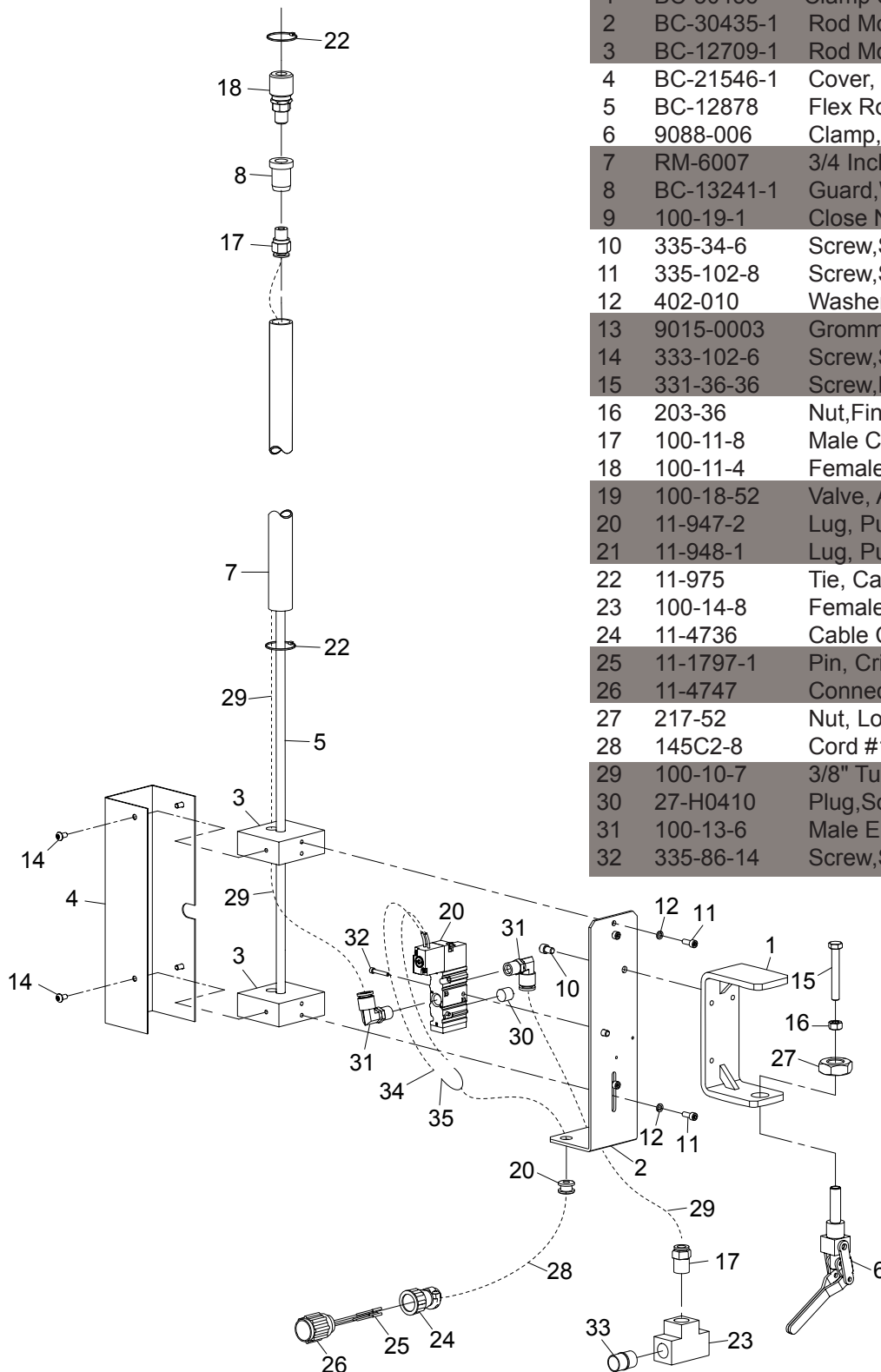
ITEM	PART NO.	DESCRIPTION	QTY.
1	BC-13241	Strain Relief	1
2	11-975	Tie, Cable 7-1/2	2
3	RM-6007	Flex Conduit, 3/4 PVC	1
4	BC-12878	Flex Rod, Fiberglass	2
5	BC-30436	Clamp, Support Bracket	1
6	331-36-36	Screw, Cap Hd Hex 5/16-18 x 2.25	1
7	203-36	Nut, Fin. Hex 5/16-18	1
8	217-52	Nut, Lock 3/4-16	1
9	9088-006	Clamp, Push/Pull 3/4 Dia	1
10	335-102-8	Screw, Skt.Hd Cap 10-32x1/2	4
11	402-010	Washer, Lock #10	4
12	BC-30435	Rod Mtg Plate	1
13	9015-0003	Grommet, Rubber	1
14	11-4736	Cable Clamp	1
15	11-1797-1	Pin, Crimp, Male	3
16	11-4747	Connector, 4P, Circular Plug	1
17	333-102-6	Screw, Hex.Skt.Hd Btn 10-32 x 3/8	4
18	54C4-44	Hole Plug	1
19	BC-21546	Cover, Mast	1
20	BC-12709	Rod Mtg Block	2
21	335-34-6	Screw, Skt.Hd Cap 1/4-20 x 3/8	2
22	832	Wire, 18 Ga Wht, Blk, Gr	A/R
23	523C1-102	Attachment Plug 110 V	1

A/R - As Required

Mast Assembly, Pneumatic

For 90" Machine and Smaller

751C1-12



ITEM	PART NO.	DESCRIPTION	QTY.
1	BC-30436	Clamp Support Bracket	1
2	BC-30435-1	Rod Mounting Plate	1
3	BC-12709-1	Rod Mounting Block	2
4	BC-21546-1	Cover, Mast	1
5	BC-12878	Flex Rod, Fiberglass	1
6	9088-006	Clamp, Push/Pull 3/4 Dia.	1
7	RM-6007	3/4 Inch Flexible Conduit PVC	1
8	BC-13241-1	Guard,Wire,ATF-II Mast	1
9	100-19-1	Close Nipple 1/4" NPT	1
10	335-34-6	Screw,Skt.Hd. 1/4-20 X 3/8	2
11	335-102-8	Screw,Skt.Hd.#10-32 X 1/2	4
12	402-010	Washer, Lock #10	4
13	9015-0003	Grommet, Rubber	1
14	333-102-6	Screw,Skt.Btn.Hd.#10-32 X 3/8	4
15	331-36-36	Screw,Hex Hd. 5/16-18 X 2&1/4	1
16	203-36	Nut,Fin.Hex 5/16-18	1
17	100-11-8	Male Conn 3/8" Tube 1-4" NPT	2
18	100-11-4	Female Quick Disconnect 1/4" NPT	1
19	100-18-52	Valve, Air Solenoid,1/4 NPT	1
20	11-947-2	Lug, Push-On, .250, Blue Female	2
21	11-948-1	Lug, Push-On, .250, Red Male	2
22	11-975	Tie, Cable 7 1/2	2
23	100-14-8	Female Tee, 1/4" NPT	1
24	11-4736	Cable Clamp	1
25	11-1797-1	Pin, Crimp, Male	3
26	11-4747	Connector, 4P, Circular Plug	1
27	217-52	Nut, Lock 3/4-16	1
28	145C2-8	Cord #18-3 Wire 8453	3ft
29	100-10-7	3/8" Tubing, Ployurethane	8.5ft
30	27-H0410	Plug,Socket Head,1/4" NPT	1
31	100-13-6	Male Elbow Swivel 3/8 Tube 1/4	2
32	335-86-14	Screw,Skt.Hd.#6-32 X 7/8	2

Eastman®

Over a Century of Cutting Expertise

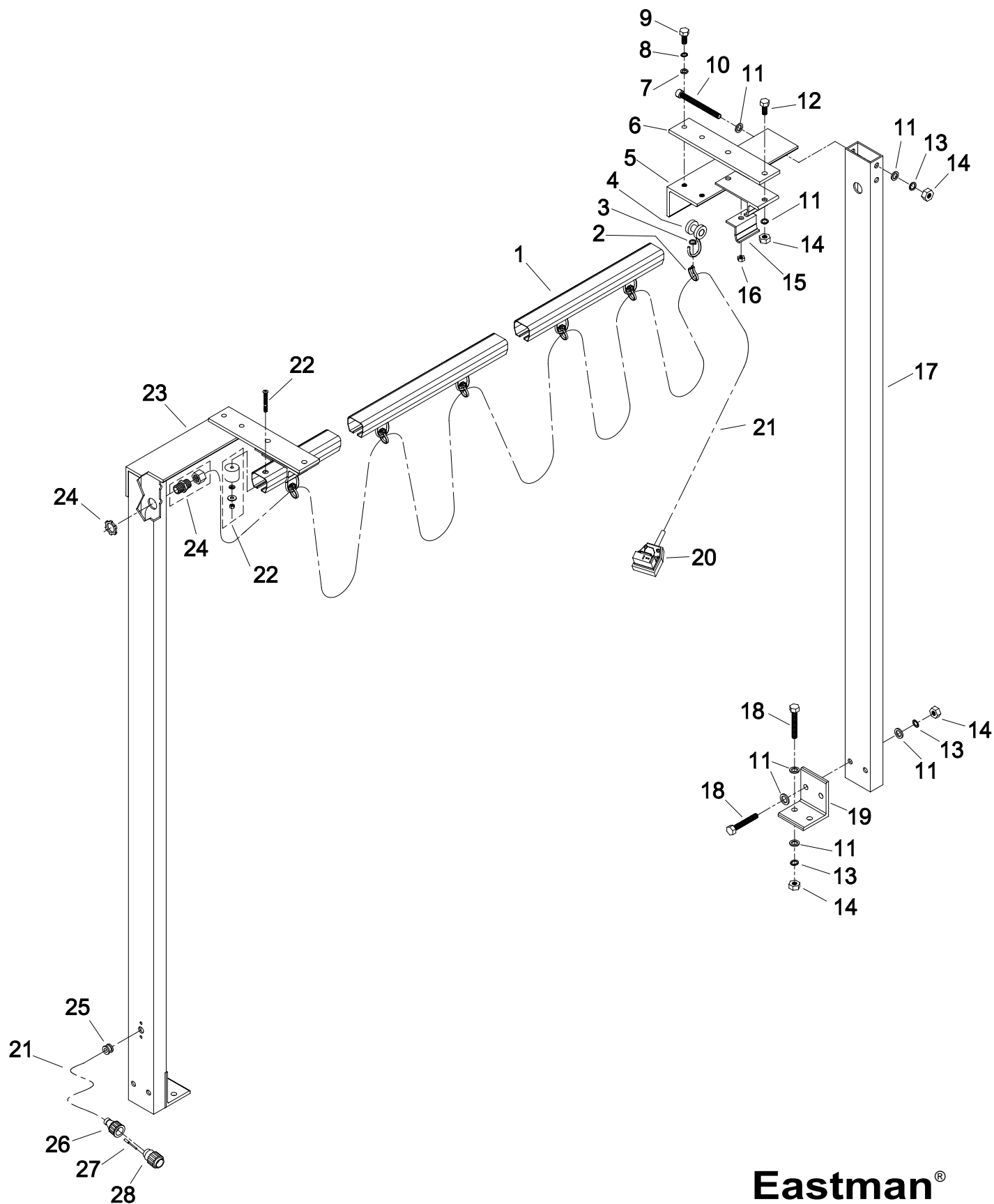
Festoon Mast Assembly

BC-03283-1-MS

ITEM	PART NO.	DESCRIPTION	QTY.
1	67-26038	Fastoon Roller Track	1
2	67-26055	Fastoon Webbing Strap	6
3	11-975	Cable Tie	6
4	67-26043	Fastoon Trolley	6
5	BC-30608-1	Bracket, Right Fastoon	1
6	BC-21810	Mounting Plate	2
7	410-36	Washer, Flat, 5/16	4
8	402-36	Washer, Lock, 5/16	4
9	331-36-12	Screw, Hex, 5/16-18 x 3/4	4
10	331-38-56	Scre, Sckt. Hd. Cap 3/8-16 x 3-1/2	4
11	410-38	Washer, Flat, 3/8	32
12	331-38-16	Screw, Hex, 5/16-18 x 1	4
13	402-38	Washer, Lock, 3/8	16
14	205-38	Nut, 3/8-16	16
15	67-26040	Fastoon Cieling Bracket	2
16	205-34	Nut, 1/4-20	1
17	BC-30607	Upright Bracket Fastoon	2
18	331-38-32	Screw, Hex 3/8-16 x 2	8
19	BC-21811	Mounting Bracket	2
20	11-4741	Attachment Plug, 110V	1
21	832	Wire, 18GA/3 Wht,Blk,Gr x 19'	A/R
22	67-26042	Fastoon End Stop	2
23	BC-30608-2	Bracket, Left Fastoon	1
24	131-004	Connector, 1/2", Straight	1
25	9015-0003	Grommet	1
26	11-4736	Cable Clamp	1
27	11-1797-1	Pin, Connector	3
28	11-4747	Connector, 4P, Circular	1

-MS Machine Size

A/R - As Required



Eastman®

Over a Century of Cutting Expertise

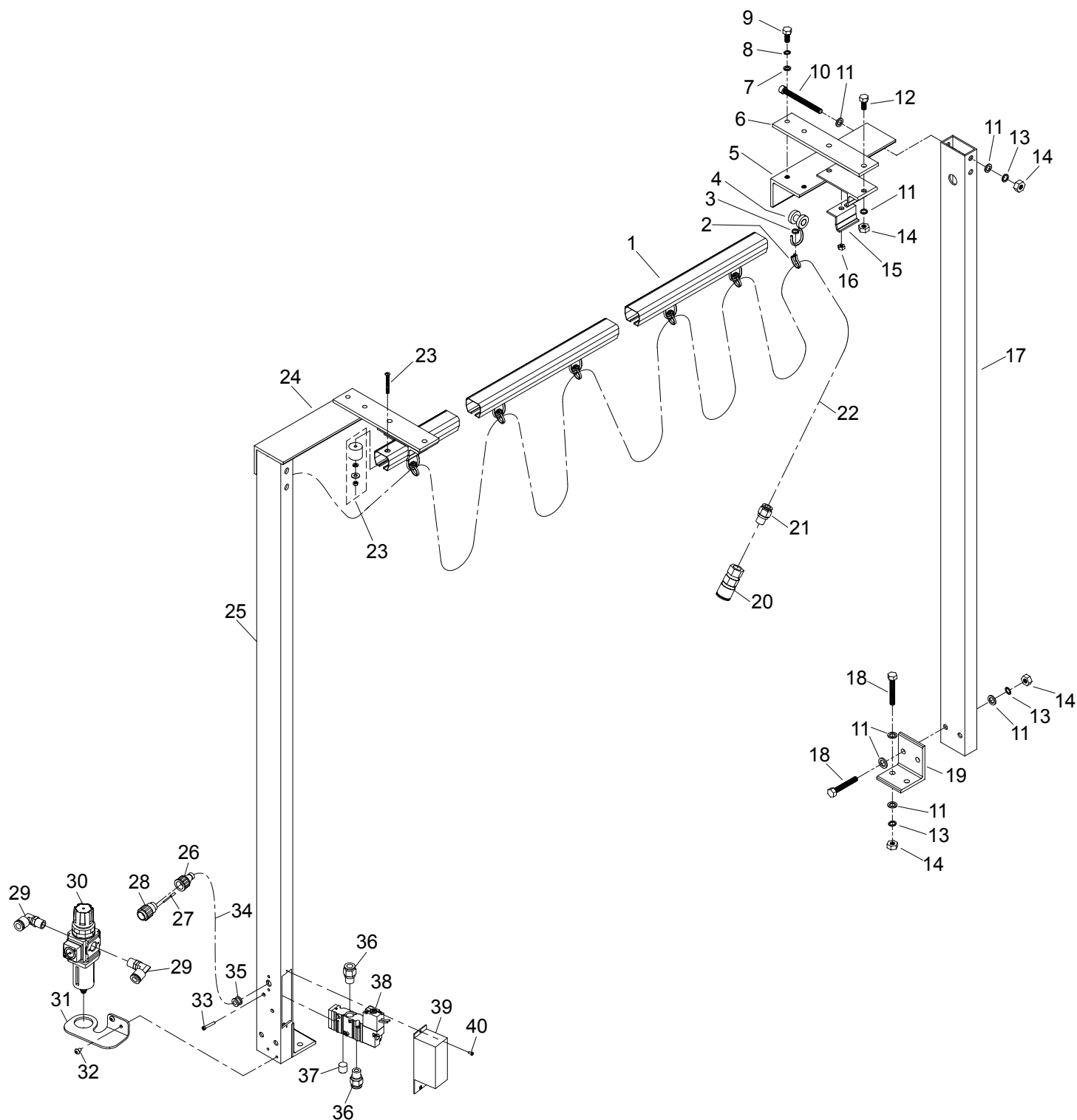
Festoon Mast Assembly 110V Pneumatic

BC-03283-5-MS

ITEM	PART NO.	DESCRIPTION	QTY.
1	67-26038	Fastoon Roller Track	1
2	67-26055	Fastoon Webbing Strap	6
3	11-975	Cable Tie	6
4	67-26043	Fastoon Trolley	6
5	BC-30608-1	Bracket, Right Fastoon	1
6	BC-21810	Mounting Plate	2
7	410-36	Washer, Flat, 5/16	4
8	402-36	Washer, Lock, 5/16	4
9	331-36-12	Screw, Hex, 5/16-18 x 3/4	4
10	335-38-56	Scre, Sckt. Hd. Cap 3/8-16 x 3-1/2	4
11	410-38	Washer, Flat, 3/8	32
12	331-38-16	Screw, Hex, 5/16-18 x 1	4
13	402-38	Washer, Lock, 3/8	16
14	205-38	Nut, 3/8-16	16
15	67-26040	Fastoon Cieling Bracket	2
16	205-34	Nut, 1/4-20	1
17	BC-30607	Upright Tube, Festoon Bj Mast 1	
18	331-38-32	Screw, Hex 3/8-16 X 2	8
19	BC-21811	Mounting Bracket	2
20	100-11-7	Female Quik Disconnect 1/4" Fpt	2
21	100-11-8	Male Conn 3/8" Tube 1/4" Npt	3
22	100-10-7	3/8" Tubing, Polyurethane	14Ft
23	67-26042	Fastoon End Stop	2
24	BC-30608-2	Bracket, Left Fastoon	1
25	BC-30607-1	Upright Tube, Fastoon Pneumatic	1
26	11-4736	Cable Clamp	1
27	11-1797-1	Pin, Connector	3
28	11-4747	Connector, 4P, Circular	1
29	100-13-6	Male Elbow Swivel 3/8" Tube 1/4"	2
30	253C2-3	Filter, Reg. W/ Gauge	1
31	62C16-316	Mounting Bracket	1
32	333-102-4	Screw,Skt.Btn.Hd.#10-32 X 1/4	2
33	335-86-14	Screw,Skt.Hd.#6-32 X 7/8	2
34	832	Wire, 18Ga/3 Wht,Blk,Gr X 19'	A/R
35	9015-0003	Grommet	1
36	27-H0410	Plu, Socket Head, 1/4" Npt	1
37	100-18-52	Valve, Air Solenoid, 1/4" Npt	1
38	BC-21986	Valve Cover, Festoon, Pneumatic	1
39	333-81-4	Screw,Skt.Btn.Hd.#4-40 X 1/4	2

-MS Machine Size

A/R - As Required



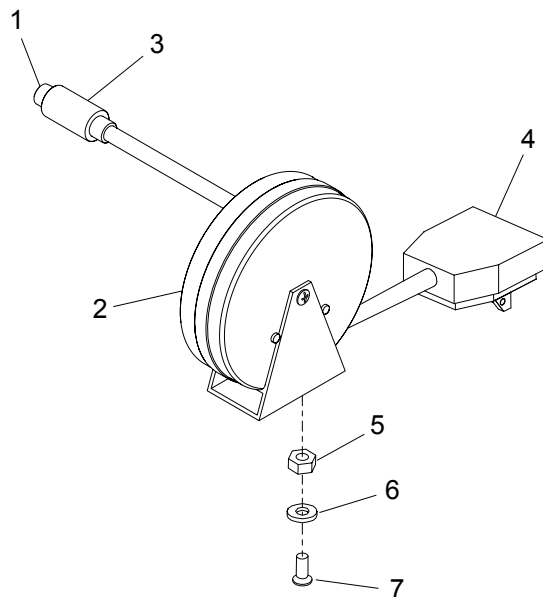
Eastman®

Over a Century of Cutting Expertise

Cord Reel Assembly, 110V

(Optional Alternative for Mast Assembly)

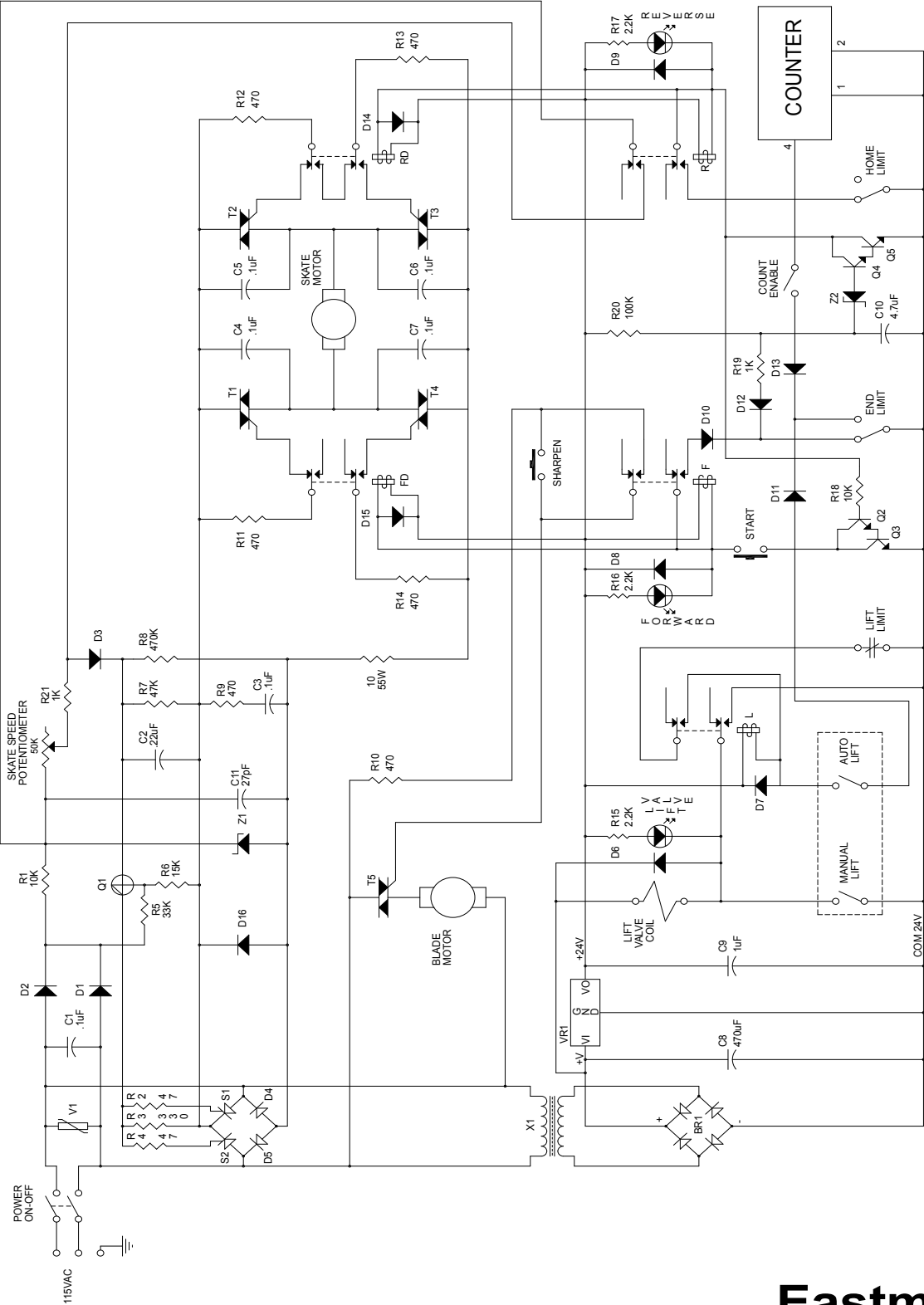
751C1-11



ITEM	PART NO.	DESCRIPTION	QTY.
1	11-4747	Connector, 4pin - Circular	1
2	148C1-1	Reel Cord, Housing & Cable	1
3	11-4736	Cable Clamp, 4pin Plug	1
4	523C1-102	Attachment Plug, 110V	1
5	217-36	Nut, Elastic - Hex 5/16-18	1
6	410-36	Washer, Flat 5/16	2
7	333-36-8	Scr. Button Hd. 5/16-18 x 1	1

Electrical Schematic

Blueprint No. 668C2-4

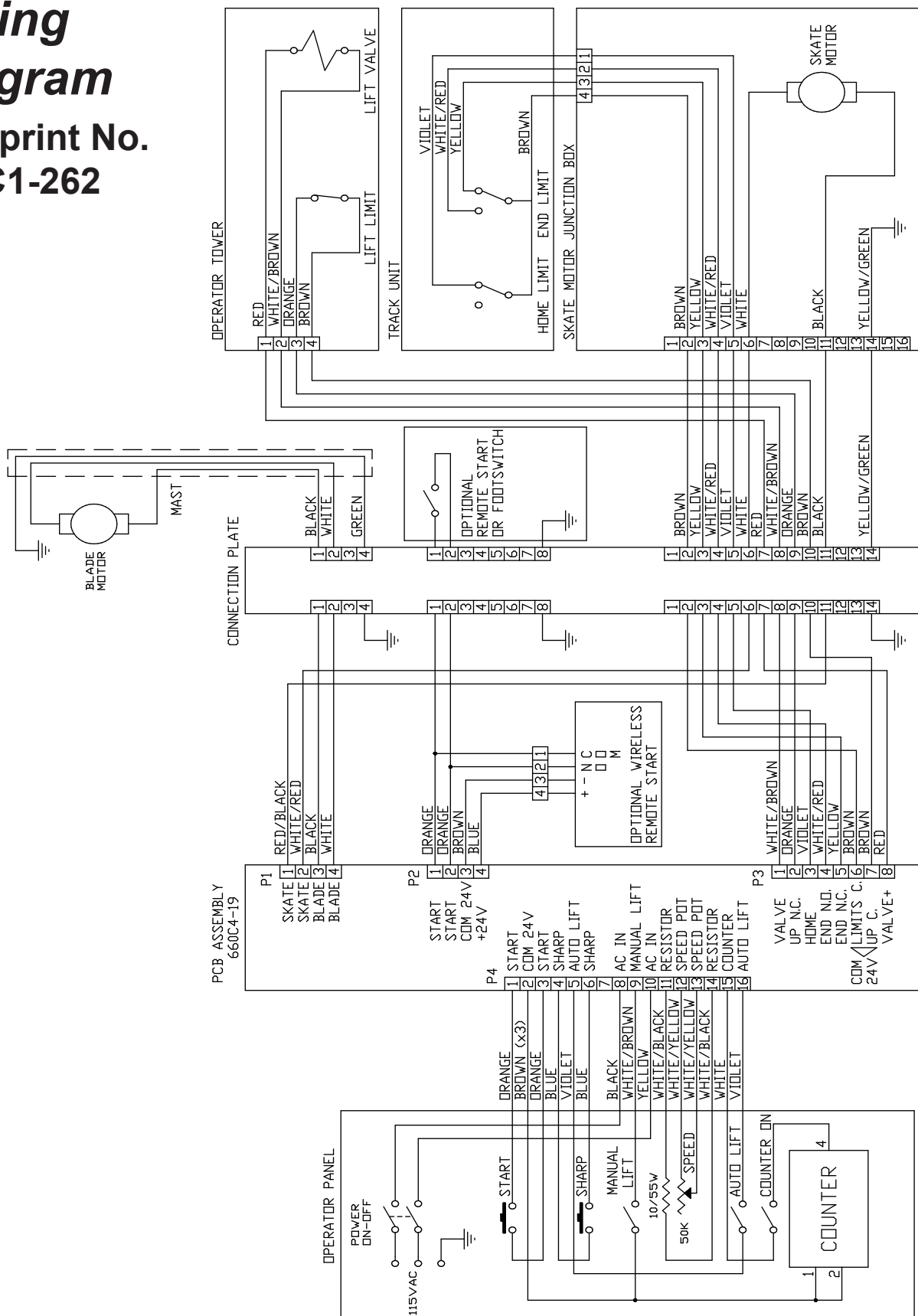


Eastman®

Over a Century of Cutting Expertise

Wiring Diagram

Blueprint No. 668C1-262



Notes

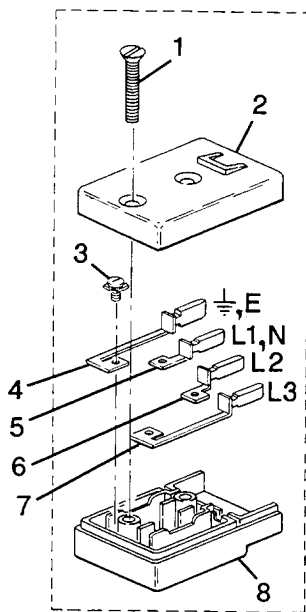
Eastman®

Over a Century of Cutting Expertise

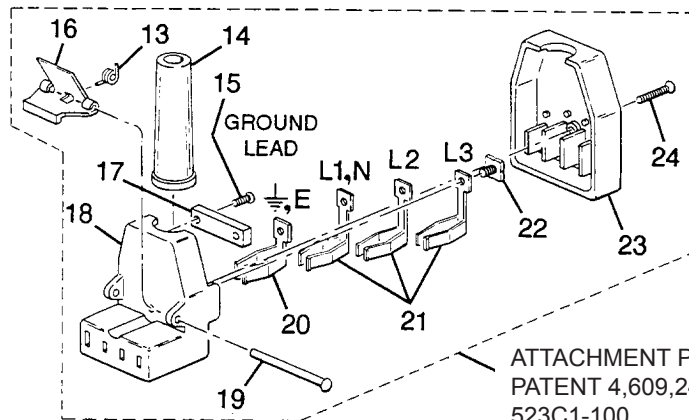
[illegible]

Over a Century of Cutting Expertise

Form C-1581



TERMINAL BLOCK
PATENT 4,609,244
508C1-100
SHOWN

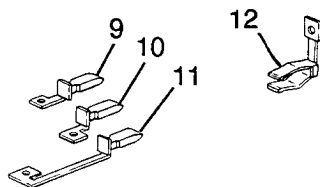


ATTACHMENT PLUG
PATENT 4,609,244
523C1-100
SHOWN



WARNING
Wiring Instructions
Eastman
Attachment Plugs

Electrical connections to this device should be made by a qualified electrician who is familiar with applicable codes and regulations. To ensure operators safety, a ground lead must be connected to terminal "E" on the attachment plug. Disconnect this equipment from electrical power before proceeding with any disassembly for adjustment, inspection or repair.



ITEM PART NO. DESCRIPTION

1	302C15-8	Screw, 10-32 x 1 1/8 Flat Hd.
2	-----	Terminal Block Top
3	20C13-103	U-Lock Screw
4	667C1-22	Terminal Contact w/Pin E
5	667C1-23	Terminal Contact w/pin L1, N
6	667C1-24	Terminal Contact w/Pin L2
7	667C1-25	Terminal Contact w/Pin L3
8	51C1-61	Terminal Block Bottom
9	667C1-26	Terminal Contact w/Pin L1, N
10	667C1-27	Terminal Contact w/Pin L2
11	667C1-28	Terminal Contact w/Pin L3
12	47C3-21	Terminal Sleeve (current)
13	34C10-170	Spring
14	1C13-27	Cord Sleeve
15	300C8-2	Screw, 4-40 x 1/2 Round Hd.
16	98C4-37	Thumb Clip
17	50C7-27	Cord Clamp
18	-----	Attachment Plug Body
19	91C4-22	Rivet
20	47C3-19	Terminal Sleeve
21	47C3-20	Terminal Sleeve (current)
22	20C13-103	U-Lock Screw
23	-----	Attachment Plug Cover
24	302C8-8	Screw, 4-40 x 7/8 Flat Hd.
25	-----	Terminal Block Complete
26	-----	Attachment Plug Complete

EASTMAN 10A 380V 3~	EASTMAN 10A 220V 3~	EASTMAN 10A 220V ~	EASTMAN 15A 120V ~	EASTMAN 25A 42V ~
2	2	2	2	2
51C1-63	51C1-64	51C1-65	51C1-66	51C1-67
4	4	3	3	3
1	1	1	1	1
1	1	1	--	--
1	1	--	1	--
--	1	--	--	1
1	1	1	1	1
--	--	--	1	1
--	--	1	--	--
1	--	--	--	--
1	--	1	1	1
1	1	1	1	1
1	1	1	1	1
2	2	--	--	2
1	1	1	1	1
1	1	1	1	1
1	1	1	1	1
82C1-45	82C1-46	82C1-47	82C1-48	82C1-49
1	1	1	1	1
1	1	1	1	1
1	1	1	1	1
1	1	1	1	1
4	4	3	3	3
53C3-19	53C3-20	53C3-21	53C3-22	53C3-23
1	1	1	1	1
508C1-99	508C1-100	508C1-101	508C1-102	508C1-103
523C1-99	523C1-100	523C1-101	523C1-102	523C1-103