

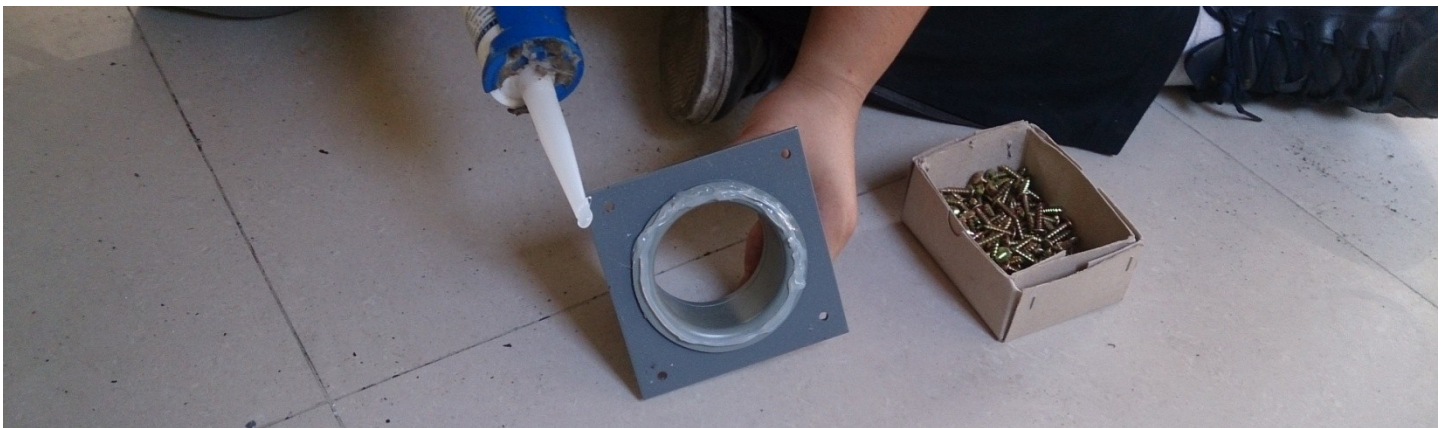
## Blowing machine installation

(Please follow the instruction as pictures indicated below)

Arrange the PVC pipe in order (Both head and tail PVC pipes are L-shaped joints)



Insert the bell mouth into the square metal plate and sealed it with silicon



Aim the air-floating holes and tighten the screws



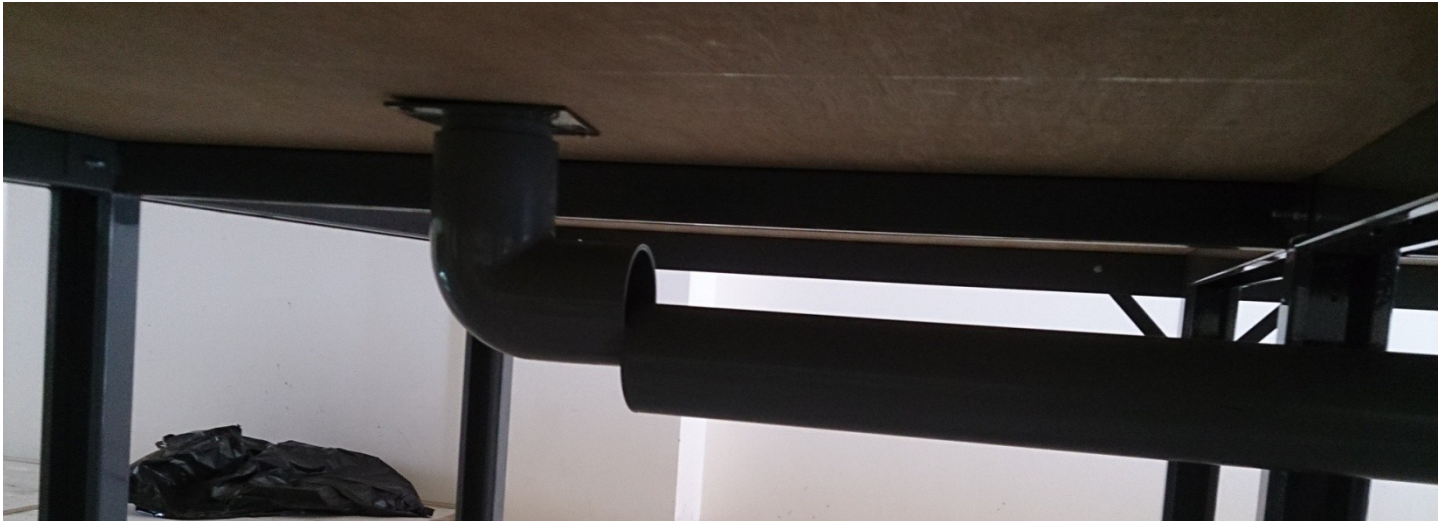


Smear glue around one head of L-shaped joint only and connect it to the bell mount

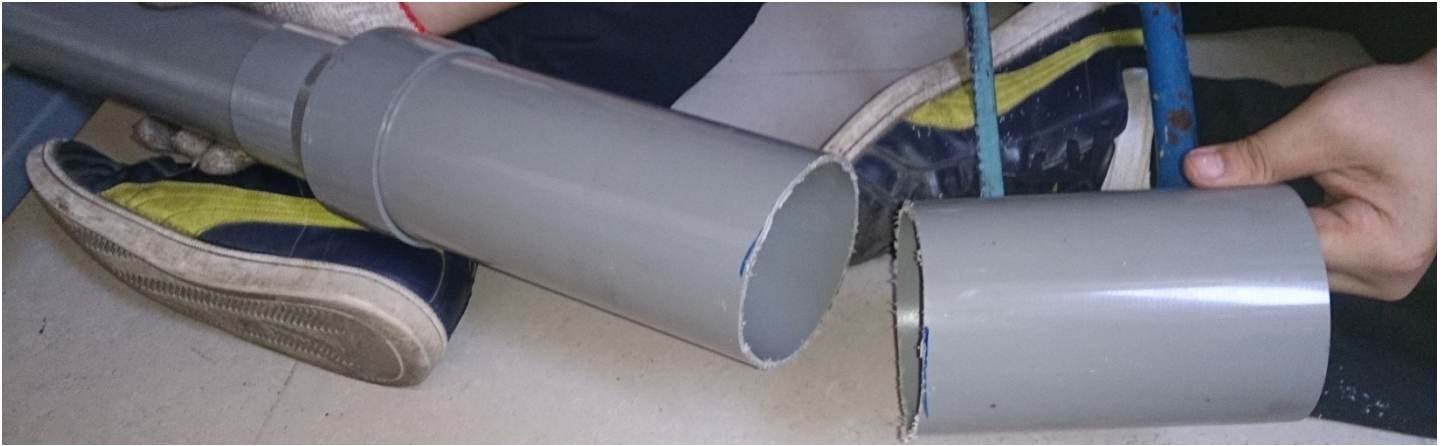




Cut the PVC pipe to the needed length





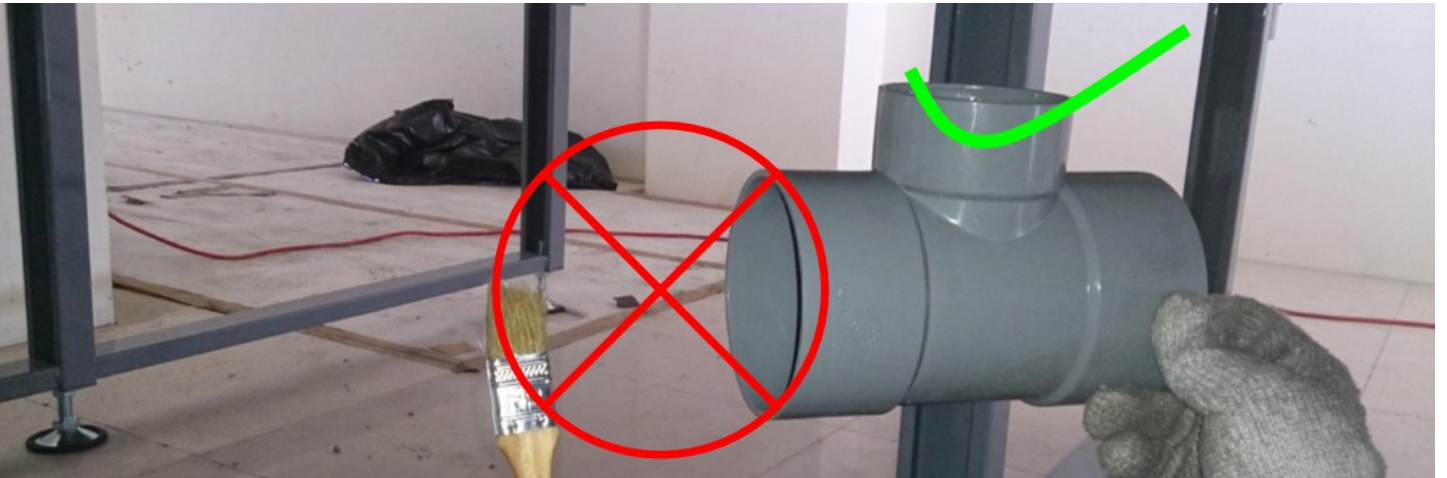


No glue needed for the lower head of L-shaped joint as connecting to the PVC pipe.

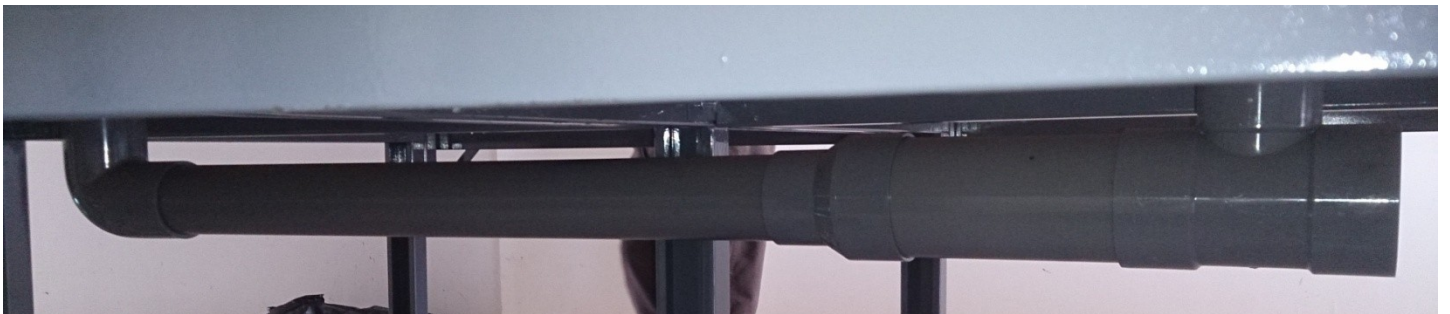


Smear glue on the top area of T-shaped joint only.

Do not smear glue on both sides of T-shaped joint now.



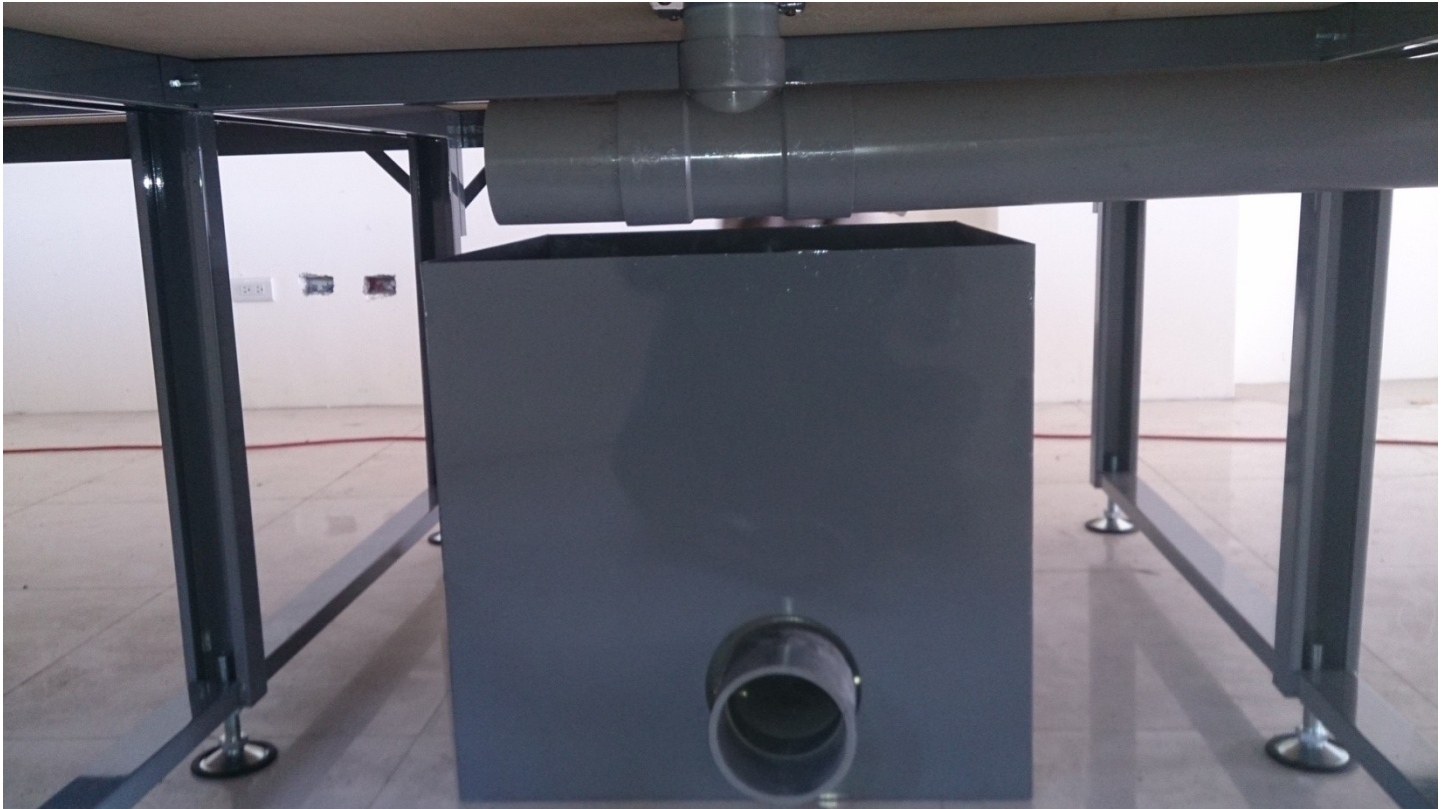
Connect all the PVC pipes



Smear glue around the head of T-shaped joint and connect with a short PVC pipe







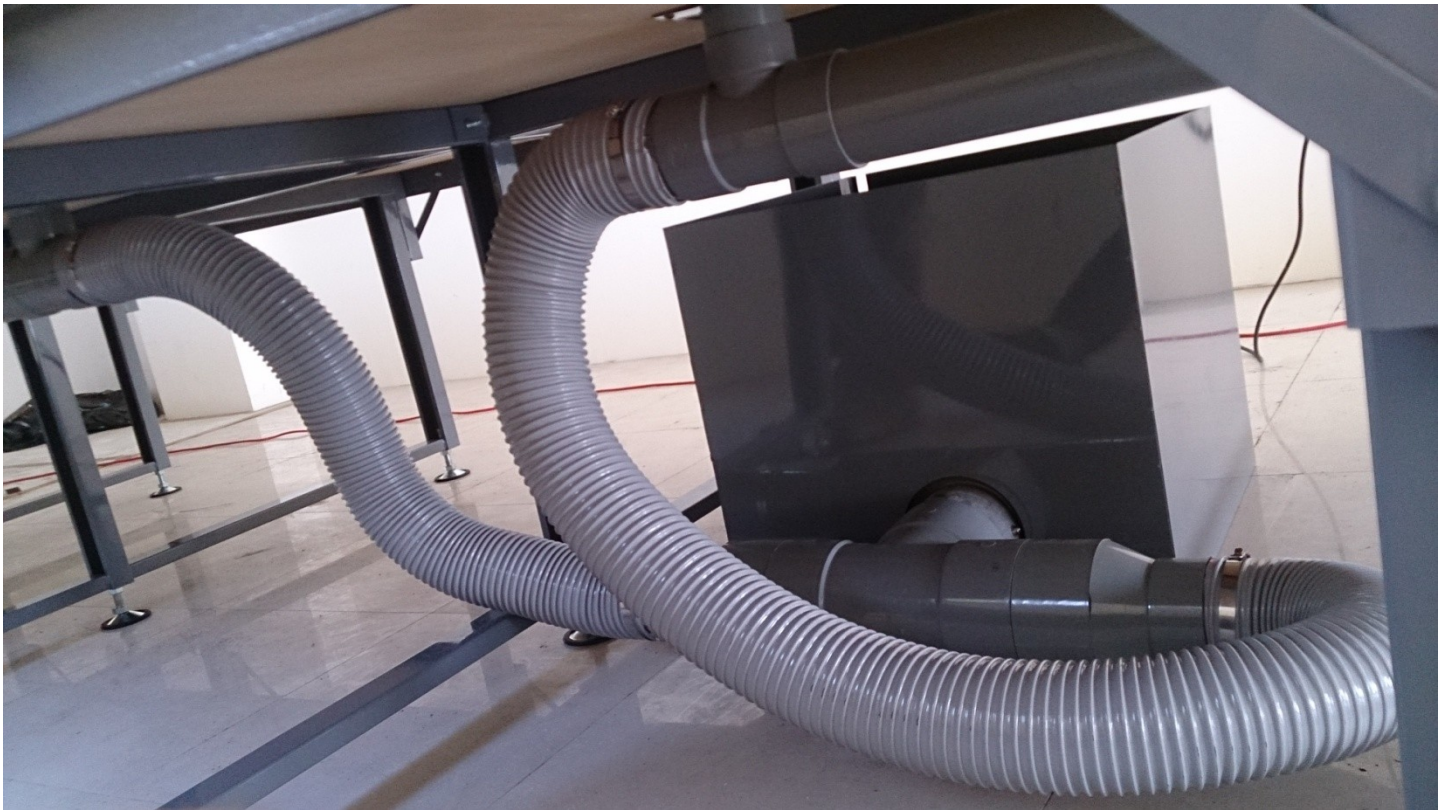
Smear glue around the head of big T-shaped joint and connect it to the blowing machine.







Connect flexible pipes to joints and lock up with metal ties





Lock up the switchboard and connect the blowing machine wire to the switch

(Please check the voltage of three-phase electric power first)

